

COMPOSED BUT AGGRESSIVE



LARGE EXCAVATOR RANGE

SY870H

Product Specifications

OPERATING WEIGHT

78.6 T

ENGINE POWER

377 kW

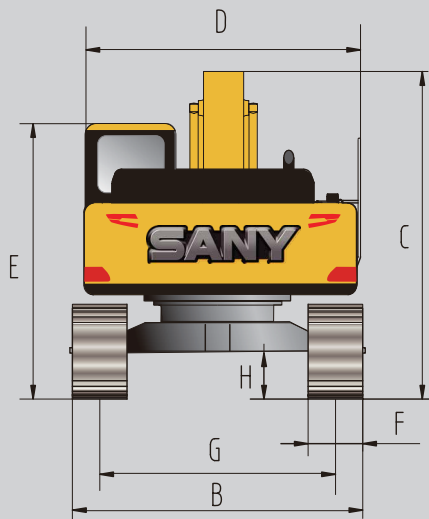
BUCKET CAPACITY

5.0-6.5m³

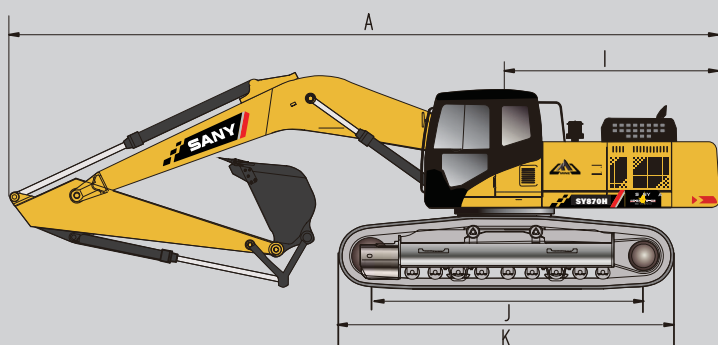
ENGINE

Isuzu GH-6WG1X

OVERALL DIMENSIONS



ITEM	mm
A Transport Length	13002
B Transport Width	4320
C Transport Height	4742
D Upper Width	3460
E Overall Height (cab top)	3795
F Width of Standard Track Shoe	650
G Track Gauge	3380/2780
H Min. Ground Clearance	880
I Tail Swing Radius	4220
J Length to centers of rollers	4770
K Track Length	5946



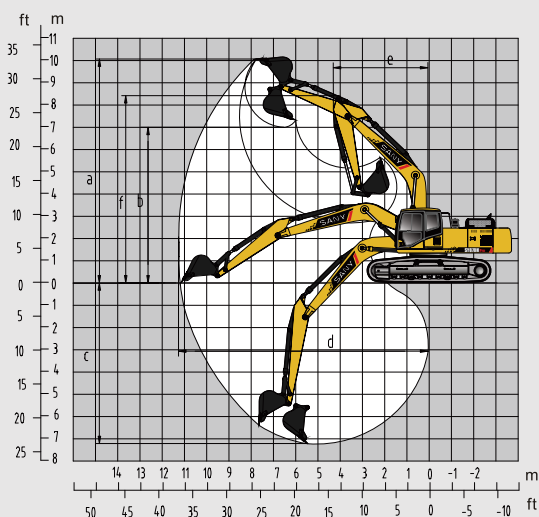
WORKING RANGE

ITEM	mm
A Maximum Digging Height	11910
B Maximum Dumping Height	7047
C Maximum Digging Depth	7247
E Maximum Digging Reach	11703
F Minimum Swing Radius	5586
G Height at Minimum Swing Radius	9802

MACHINE PARAMETERS

Operating Weight	78600 kg
Engine Type	Isuzu GH-6WG1X
Engine Rated Power	377 kW
Engine Max Torque	2138/1500 Nm
Engine Displacement	15.681 L
Swing Speed	7.7 rpm
Travel Speed (high/low)	4.5/2.9 km/h
Fuel Tank Capacity	940 L
Engine Oil Capacity	42-57 L
Bucket Digging Ability (booster)	432 kN
Ground Pressure	114 kPa

OPERATING RANGE



Material and specifications are subject to change without notice.
Feature machines in photos may include additional equipment.



1300 BROOKS (276 657)

@ service@brooksequipment.com.au

www.brooksequipment.com.au

BROOKS
EQUIPMENT

STANDARD EQUIPMENT

Standard configuration

Engine	Cab	Lower running body	Alarm system
Isolated mounted engine ●	Ultra-silence frame cab ●	Walking parking brake ●	Controller trouble ●
Dynamic optimizing mode control ●	Reinforced light-color glass window ●	Walking motor guard ●	Abnormal pump pressure ●
Radiator (with full protective screen) ●	Silicone oil rubber damper ●	H-type track guide mechanism ●	Pilot pressure of various movements abnormal ●
24V/5.0kW starter motor ●	Openable top/front wall upper window and left side window ●	The track tensioning mechanism ●	Abnormal power supply voltage ●
90AAC motors ●	Rear window emergency exit ●	Driving wheels connected by bolts ●	Abnormal hydraulic oil temperature ●
Oil-bath type air filter ●	Wiper (with washer) ●	Carrier roller and track roller ●	Engine oil pressure insufficient and engine coolant temperature too high ●
Desert-type air filter ●	Multi-direction adjustable air-suspended seat ●	Reinforced chain track with pin shaft seal ●	Throttle rotary knob failure ●
Engine oil filter ●	Radio (with digital clock) ●	650mm double-rib crawler plate ●	Insufficient fuel oil quantity ●
Three-stage fuel oil filter ●	Footrest, floor cover ●	Reinforced side pedal ●	
Engine oil cooler ●	Loudspeaker, rearview mirror ●	Bottom cover plate ●	
Auxiliary radiator water tank ●	Seatbelt and fire extinguisher ●		
Fan deflector ●	Cup holder, compartment light ●		
Automatic idling system ●	Ashtray, escape hammer ●		
	Storage compartment, storage pocket ●		
	Pilot control cut-off lever ●		
	Fully automatic air conditioning ●		
	Emergency stop switch ●		
	Falling object protect structure and front protective screen ●		

● indicates standard ○ indicates optional

Hydraulic system	Front working equipment	Upper rotary platform
Control valve with main overflow valve ●	Flange pin ●	Fuel level sensor ●
Spare oil port of control valve ●	Welded connecting rod ●	Hydraulic oil level gauge ●
Oil suction filter ●	Automatic concentrated lubrication system ○	Toolbox ●
Oil drain filter ●	All bucket pins are provided with dust-proof seal rings ●	Slewing parking brake ●
Return filter ●	Enhanced all-welded box-type swing arm ●	Rearview mirror (right) ●
Leading filter ●	Enhanced all-welded box-type bucket rod ●	Rearview camera ●
Blanking pipe of hydraulic damper ●	Anti-collision guard plate ●	Cab warning lamp ●
Independent oil radiator ●		
Crushing hammer pipeline ○		

Monitoring system instruments	Safety	Others
Global positioning system (GPS) ●	Emergency stop switch ●	High-capacity storage battery ●
7" colored display screen ●	Signal/alarm horn ●	Lockable top cover ●
EEVIA system ●	Mirrors ●	Lockable fuel oil filler cap ●
Hour meter, fuel tank oil level gauge ●	Rear window emergency exit ●	Anti-slip pedal, armrest and sidewalk ●
Engine coolant temperature gauge ●	Negative pole switch of storage battery ●	Marks for walking direction on the walking frame ●
Engine oil pressure gauge ●		Manual grease gun ●
		Motor-driven diesel pump ○

● indicates standard ○ indicates optional



1300 BROOKS (276 657)
 @ service@brooksequipment.com.au
 www.brooksequipment.com.au

BROOKS
 EQUIPMENT