

# BROOKS

## ACCESS

Phone: 1300 276 657

Email: [sales@brooksaccess.com.au](mailto:sales@brooksaccess.com.au)

[www.brooksaccess.com.au](http://www.brooksaccess.com.au)



*“Better Being With Brooks”*

Proud member of  
**EWPA**  
www.ewpa.com.au

Proud member of  
**TSHA**  
www.tsha.com.au

**CICA**  
The Crane Industry Council of Australia

# BROOKS ACCESS

- 1300 BROOKS (276 657)
- sales@brooksaccess.com.au
- brooksaccess.com.au

Member of  
**EWPA**

Member of  
**TSHA**

Member of  
**CICA**  
The Crane Industry Council of Australia

## PERTH

Brooks Hire & Brooks Access Head Office  
30 Coulson Way  
Canning Vale WA 6155

Brooks Equipment Head Office  
39 - 43 Murray Road North  
Welshpool WA 6106

Brooks Site Services Head Office  
25 Glassford Road  
Kewdale WA 6105

**SYDNEY**  
3 Glossop Street  
St Marys NSW 2760

**ORANGE**  
20 Cameron Place  
ORANGE NSW 2800

**MELBOURNE**  
610 Geelong Road  
Brooklyn VIC 3012

**BRISBANE**  
2355 Ipswich Road  
Oxley QLD 4075

**ADELAIDE**  
525 South Road  
Regency Park SA 5010

**PORT AUGUSTA**  
70 Victoria Parade  
Port Augusta SA 5700

**DARWIN**  
402 Stuart Highway  
Winnellie NT 0820

**ALBANY**  
140 Chester Pass Road  
Lange WA 6330

**BUNBURY**  
3 Richter Road  
Davenport WA 6230

**GERALDTON**  
67-73 Flores Road  
Webborton WA 6530

**KALGOORLIE**  
2-4 Williams Street  
West Kalgoorlie WA 6430

**PORT HEDLAND**  
1 Manganese Street  
Wedgefield WA 6721

**NEWMAN**  
2 Bangkerbang Close  
Newman WA 6753

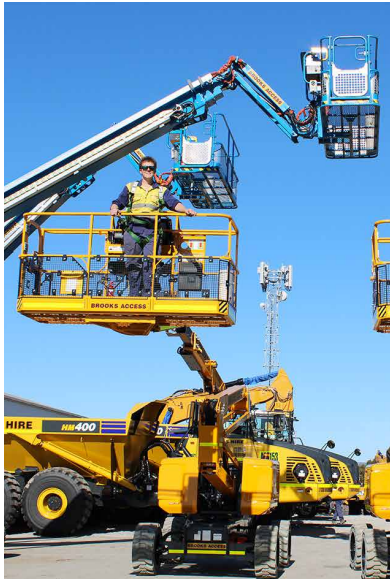
**KARRATHA**  
1 Coolawanyah Road  
Karratha WA 6714

**TOOWOOMBA**  
8575 Warrego Highway  
Withcott QLD 4352

**DALBY**  
172 Drayton Street  
Dalby QLD 4405

**GLADSTONE**  
1 Gladstone Benaraby Road  
Gladstone Central QLD 4680

**MACKAY**  
27 Barnes Creek Road  
Cremorne QLD 4740



## WHO ARE BROOKS ACCESS?

**Brooks Access specialise in the hire and sale of access equipment.**

Brooks Access is a part of Brooks Group Australia; an Australian family owned and operated business since 1979. With over 45 years experience in construction machinery, we've built a solid reputation of reliability and integrity.

## WHAT CAN WE DO FOR YOU?

### ■ QUALITY ASSURANCE

- ISO & Australian Standards in Quality Management, Health & Safety, and Environmental Management.

### ■ NEW EQUIPMENT

- We have the capacity to purchase brand new equipment as our clients require it.
- Growing range of equipment such as Articulated Boom Lifts, Scissor Lifts, Telescopic Boom Lifts, and Telescopic Handlers.

### ■ HIRE AND SALES

- Short term and long term hire available.
- Brand new equipment sales.
- Quality brands such as JLG, Genie, Haulotte, Manitou, Dieci, JCB, Melro, Kalmar, Hyster & Franna.

### ■ SERVICE & PARTS

- Team of specialist Parts Interpreters with a huge range of spare parts kept in store.
- Technical support and extended after sale maintenance service.

### ■ TRANSPORT & DELIVERY

- 22 Branches Australia wide. Delivery can be facilitated to any jobsite in Australia.



# ARTICULATED BOOM LIFTS

**BROOKS**  
ACCESS

1300 BROOKS (276 657)  
sales@brooksaccess.com.au  
brooksaccess.com.au

## 34ft Articulated Boom Lift - Rough Terrain

GENIE Z-34/22 IC

FOR HIRE

FOR SALE



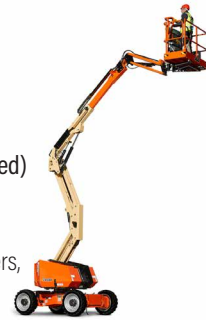
Max Working Height 40 ft 10 in | 12.62 m  
Max Horizontal Reach 22 ft 3 in | 6.78 m  
Platform Capacity 500 lbs | 227 kg (unrestricted)  
**Key Features**  
4WD and up to 45% gradeability for superior terrainability  
1.22 m (4 ft) articulating jib with a 139° vertical rotation  
Zero tailswing and nose swing in all positions.

## 34ft Articulated Boom Lift - Diesel

JLG 340AJ

FOR HIRE

Max Working Height 40 ft 10 in | 12.62 m  
Max Horizontal Reach 19 ft | 6.07 m  
Platform Capacity 500 lb | 227 kg (unrestricted)  
**Key Features**  
Environmentally-friendly Tier 4 diesel engine  
Ideal for general contractors, steel erectors, painters, stadium construction and more.



## 38ft Articulated Boom Lift - Electric

Snorkel A38E

FOR HIRE

Max Working Height 44 ft 29 in | 13.5 m  
Max Horizontal Reach 20 ft | 6.1 m  
Platform Capacity 474 lb | 215 kg (unrestricted)  
**Key Features**  
A lightweight, durable and reliable electric articulated boom lift. Designed for internal and external use, featuring compact dimensions for maximum maneuverability & versatility.



## 45ft Articulated Boom Lift - Diesel

JLG 450AJ

FOR HIRE

Max Working Height 51 ft 6 in | 15.72 m  
Max Horizontal Reach 25 ft | 7.62 m  
Platform Capacity 550 lb | 250 kg (unrestricted)  
**Key Features**  
Accessibility – up and over access  
Move over uneven surfaces with Automatic Traction Control  
More durability and serviceability.



## 45ft Articulated Boom Lift - Rough Terrain

GENIE Z-45 XC

FOR HIRE

FOR SALE

Max Working Height 51 ft 6 in | 15.87 m  
Max Horizontal Reach 24 ft 9 in | 7.55 m  
Platform Capacity 660 lb | 300 kg (unrestricted)  
**Key Features**  
Full-time active oscillating axle helps maintain traction on rough terrain. 4WD and 45% gradeability for superior terrainability. Dual lifting capacity: unrestricted platform capacity.



## 45ft Articulated Boom Lift - Diesel

Haulotte HA16RTJ PRO

FOR HIRE

Max Working Height 52 ft 49 in | 16.0 m  
Max Horizontal Reach 27 ft 23 in | 8.3 m  
Platform Capacity 507 lb | 230 kg (unrestricted)  
**Key Features**  
Haulotte ActivLighting System for safe loading  
Modular large basket 2.44 m x 0.91 m quick & easy to repair  
Haulotte Stop Emission System.



## 46ft Articulated Boom Lift - Diesel

Snorkel A46JRT

FOR HIRE

FOR SALE

Max Working Height 53 ft 4 in | 16.3 m  
Max Horizontal Reach 24 ft 1 in | 7.35 m  
Platform Capacity 500 lb | 227 kg (unrestricted)  
**Key Features**  
Provides exceptional maneuverability with an articulated jib as standard for extended reach. Features a tight turning radius and zero tailswing.



## 60ft Articulated Boom Lift - Rough Terrain

JLG 600AJ

FOR HIRE

FOR SALE

Max Working Height 60 ft 6 in | 18.46 m  
Max Horizontal Reach 39 ft 7 in | 12.10 m  
Platform Capacity 507 lb | 230 kg (unrestricted)  
**Key Features**  
Optional articulating jib gets you into hard-to-reach places. Unmatched maneuverability for confined work area. Best reach envelope in its class.



## 60ft Articulated Boom Lift - HI-CAPACITY

JLG 600AJ-HC3

FOR HIRE

Max Working Height 60 ft | 18.29 m  
Max Horizontal Reach 40 ft 7 in | 12.37 m  
Platform Capacity 1000 lb | 453.59 kg (unrestricted)  
**Key Features**  
3 Capacity Zones - Each rated for 3 occupants + tools/materials  
A zero calibration automatic load sensing system.  
An upgraded light panel is more visible in the sun.



## 62ft Articulated Boom Lift - Rough Terrain

GENIE Z-62/40

FOR HIRE

FOR SALE

Max Working Height 67 ft 11 in | 20.87 m  
Max Horizontal Reach 40 ft 9 in | 12.42 m  
Platform Capacity 500 lb | 227 kg (unrestricted)  
**Key Features**  
Full-time active oscillating axle helps maintain traction on rough terrain. 4WD and 45% gradeability for superior terrainability. Dual lifting capacity: unrestricted platform capacity.



# ARTICULATED BOOM LIFTS

**BROOKS**  
ACCESS

1300 BROOKS (276 657)  
sales@brooksaccess.com.au  
brooksaccess.com.au

## 80ft Articulated Boom Lift - Rough Terrain

GENIE Z-80/60

FOR HIRE

FOR SALE

Max Working Height 84 ft | 25.77 m  
Max Horizontal Reach 60 ft | 18.29 m  
Platform Capacity 500 lb | 227 kg (unrestricted)

### Key Features

Genie® Fast Mast™ system lowers the platform to the ground without having to lower the secondary boom.  
Full-time positive traction and full-time 4WD.



## 80ft Articulated Boom Lift - Diesel

JLG 800AJ

FOR HIRE

FOR SALE

Max Working Height 86 ft 5 in | 26.38 m  
Max Horizontal Outreach 51 ft 10 in | 15.8 m  
Platform Capacity 507 lb | 230 kg (unrestricted)

### Key Features

Driving speed - 4WD: 4.83 km/h. Turning Radius Outside: 3.53 m  
Workstation in the Sky® accessories. Reduced emissions.  
Best reach envelope in the industry.



## 80ft Articulated Boom Lift - Diesel

HAULOTTE HA26 RTJ PRO

FOR HIRE

Max Working Height 84 ft | 25.77 m  
Max Horizontal Outreach 57 ft 4 in | 17.5 m  
Platform Capacity 551 lb | 250 kg (2 person)

### Key Features

Solid Rough Terrain tyres.  
Large modular basket with dual capacity  
Option for 350kg lift capacity.



## 80ft Articulated Boom Lift - HI-CAPACITY

JLG 800AJ HC3

FOR HIRE

Max Working Height 86 ft 5 in | 26.38 m  
Max Horizontal Outreach 51 ft 10 in | 15.9 m  
Platform Capacity 661 lb | 300 kg (unrestricted)

### Key Features

Driving speed - 4WD: 4.83 km/h.  
Extra platform capacity up to 454 kg (restricted)  
Engine Type - Dual Fuel, 360 Degrees Swing



## 80ft Articulated Boom Lift - Diesel

XCMG XGA26K

FOR HIRE

FOR SALE

Max Working Height 87 ft 3 in | 26.6 m  
Max Horizontal Reach 63 ft 9 in | 19.5 m  
Platform Capacity 564 lb | 256 kg (ltd)

### Key Features

160° of platform rotation, four-wheel braking, an axle balancing system and axle balance pressure detection system.



## 125ft Articulated Boom Lift - Diesel

JLG 1250AJP

FOR HIRE

Max Working Height 132 ft 4 in | 38.30 m  
Max Horizontal Reach 63 ft 2 in | 19.25 m  
Platform Capacity 507 lb | 230 kg (unrestricted)

### Key Features

Strong 100,000-psi steel and a dual 230kg / 450kg capacity.  
JibPLUS Boom 2.44m, Jib Articulates Vertically & Horizontally,  
Oscillating AxleStrong.



## 135ft Articulated Boom Lift - Rough Terrain

HAULOTTE HA41 RTJ Pro

FOR HIRE

Max Working Height 136 ft | 41.5 m  
Max Horizontal Reach 65 ft 9 in | 20.1 m  
Platform Capacity 500 lb | 230 kg

### Key Features

Ideal for outdoor construction and industrial applications.  
Differential wheel lock increasing rough terrain capacity.  
Four-wheel steer and coordinated steer options.



## 135ft Articulated Boom Lift - Rough Terrain

GENIE ZX-135/70

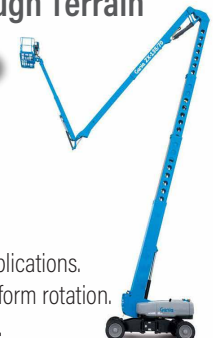
FOR HIRE

FOR SALE

Max Working Height 141 ft | 43.15 m  
Max Horizontal Reach 69 ft 9 in | 21.26 m  
Platform Capacity 600 lb | 272 kg

### Key Features

Ideal for outdoor construction and industrial applications.  
360° continuous rotation turntable and 160° platform rotation.  
Four-wheel steer and coordinated steer options.



# HYBRID BOOM LIFTS

**BROOKS**  
ACCESS

1300 BROOKS (276 657)  
sales@brooksaccess.com.au  
brooksaccess.com.au

## 45ft Articulated Boom Lift - Hybrid

Genie Z-45FE

FOR HIRE

FOR SALE



Max Working Height 52 ft 23 in | 15.92 m  
Max Horizontal Reach 22 ft 76 in | 6.94 m  
Platform Capacity 661 lbs | 300 kg (unrestricted)

### Key Features

Environment-friendly solution for increased efficiency and low cost of operation. In 'all-electric' mode it offers a full work day of emissions-free run time on a single battery charge.

## 45ft Articulated Boom Lift - Hybrid

XCMG XGA16K

FOR HIRE

FOR SALE



Max Working Height 54 ft 5 in | 16.6 m  
Max Horizontal Reach 28 ft 9 in | 8.82 m  
Platform Capacity 771 lb | 350 kg (limited)

### Key Features

Hybrid boom lift, featuring an electrical system with distributed PLC control technology and adaptive control of proportional valves.

## 60ft Articulated Boom Lift - Hybrid

Genie Z-60FE

FOR HIRE

FOR SALE



Max Working Height 66 ft 14 in | 20.16 m  
Max Horizontal Reach 36 ft 58 in | 11.15 m  
Platform Capacity 500 lb | 227 kg (unrestricted)

### Key Features

The ideal, environment-friendly solution for increased efficiency & low cost of operation. In 'all-electric' mode it offers a full work day of emissions-free run time on a single battery charge.

## 60ft Articulated Boom Lift - Hybrid

XCMG XGA20K

FOR HIRE

FOR SALE



Max Working Height 67 ft 6 in | 20.6 m  
Max Horizontal Reach 39 ft 6 in | 12.08 m  
Platform Capacity 771 lb | 350 kg (limited)

### Key Features

"Σ" type linkage folding hybrid boom that's compact, easy to operate, safe, reliable, and accurate, meeting the needs of multiple industries.

# TELESCOPIC BOOM LIFTS

**BROOKS**  
ACCESS

1300 BROOKS (276 657)  
sales@brooksaccess.com.au  
brooksaccess.com.au

## 45ft Telescopic Boom Lift - Extra Capacity

GENIE S-45 XC

FOR HIRE

FOR SALE

Max Working Height 51 ft | 15.7 m  
Max Horizontal Reach 36 ft 2 in | 11 m  
Platform Capacity 660 lb | 300 kg Unrestricted

### Key Features

Up to 454 Kg capacity with restricted envelope.  
Load sense technology for accurate load weighing and zero-load field calibration.



## 65ft Telescopic Boom Lift - Extra Capacity

GENIE S-65 XC

FOR HIRE

FOR SALE

Max Working Height 71 ft | 21.8 m  
Max Horizontal Reach 54 ft 2 in | 16.5 m  
Platform Capacity 660 lb | 300 kg Unrestricted

### Key Features

Robust jib design to handle loads up to 454 kg capacity with restricted envelope. Load sense technology.  
Chassis tilt sensor technology.



## 72ft Telescopic Boom Lift - Combined Boom

XCMG XGS22K

FOR HIRE

FOR SALE

Max Working Height 72.2 ft | 22 m  
Max Horizontal Reach 56 ft 4 in | 17.2 m  
Platform Capacity 1014 lb | 460 kg Limited

### Key Features

Combined boom, consisting of a double-linked tower boom and three sections of telescopic boom, with a fly boom structure.



## 85ft Telescopic Boom Lift - Extra Capacity

GENIE S-85 XC

FOR HIRE

FOR SALE

Max Working Height 91 ft | 28 m  
Max Horizontal Reach 74 ft 6 in | 23 m  
Platform Capacity 660 lb | 300 kg Unrestricted

### Key Features

Up to 3 people can work onboard with room tools & materials.  
Up to 454 kg capacity with restricted envelope.  
Zero-load field calibration. Chassis tilt sensor technology.



## 135ft Telescopic Boom Lift - Extra Capacity

GENIE SX-135 XC

FOR HIRE

FOR SALE

Max Working Height 141 ft | 43 m  
Max Horizontal Reach 90 ft | 27.43 m  
Platform Capacity 660 lb | 300 kg Unrestricted

### Key Features

Industry-leading 90 ft (27.43 m) of maximum outreach.  
Increased range of motion with 125° of jib articulation.  
Up to 454 Kg capacity with restricted envelope.



# SCISSOR LIFTS

**BROOKS**  
ACCESS

1300 BROOKS (276 657)  
sales@brooksassess.com.au  
brooksassess.com.au

## 14ft Scissor Lift - Electric

GENIE GS-1432

FOR HIRE

FOR SALE

Max Platform Height 20 ft 1 in | 6.30 m  
Machine Width 32 in | 81 cm  
Platform Capacity 500 lb | 227 kg

### Key Features

Features an efficient, all-electric AC drive system that offers unmatched productivity for getting around indoor & outdoor jobsites in a compact & lightweight package.



## 19ft Scissor Lift - Electric

JLG R1932

FOR HIRE

FOR SALE

Max Platform Height 25 ft 1 in | 7.8 m  
Machine Width 2.7 ft | 0.81 m  
Platform Capacity 507 lb | 230 kg

### Key Features

Active pothole protection with increased ground clearance. Fewer parts and an improved battery charger. All-steel platform & component doors, thicker rubber tires.



## 19ft Scissor Lift - Electric

GENIE GS-1932

FOR HIRE

FOR SALE

Max Working Height 25 ft 7 | 7.79 m  
Machine Width 2 ft 8 in | 0.81 m  
Platform Capacity 500 lb | 227 kg

### Key Features

Front-wheel drive and zero inside turning radius  
Large platform workspace with 0.91 m (36 in) roll-out platform extension.



## 19ft Scissor Lift - Electric

SNORKEL 3219E

FOR HIRE

FOR SALE

Max Working Height 25 ft 5.6 in | 7.79 m  
Machine Width 2 ft 6.6 in | 0.81 m  
Platform Capacity 551 lb | 250 kg

### Key Features

Roll-out deck extension with dual locks. a standard doorway, this scissor lift suits indoor & outdoor applications. Deep cycle batteries maximize working hours.



## 19ft Scissor Lift - Electric

XCMG XG0807ACW

FOR HIRE

FOR SALE

Max Working Height 25 ft 6 in | 7.8 m  
Machine Width 2 ft 7 in | 0.81 m  
Platform Capacity 507 lb | 230 kg

### Key Features

Electric scissor lift featuring a zero inner turning radius design, allowing access in narrow spaces.



## 26ft Scissor Lift - Electric

GENIE GS-2632

FOR HIRE

FOR SALE

Max Working Height 32 ft 1 in | 9.8 m  
Machine Width 2 ft 8 in | 0.81 m  
Platform Capacity 500 lb | 227 kg

### Key Features

Easy to maneuver in tight spaces. Large platform workspace - 90cm roll-out platform extension. User-friendly dual-zone controls for indoor and outdoor use.



## 26ft Scissor Lift - Electric

JLG ES2632

FOR HIRE

FOR SALE

Max Working Height 31 ft 6 in | 9.6 m  
Machine Width 2 ft 8 in | 0.81 m  
Platform Capacity 507 lb | 230 kg  
**Key Features**  
Industry-exclusive outdoor rating for use up to 21 ft.  
Active pothole protection / increased ground clearance.  
Fit Through Standard Doorways gives you more access.



## 26ft Scissor Lift - Electric

XCMG XG1012AC

FOR HIRE

FOR SALE

Max Working Height 32 ft 8 in | 10 m  
Machine Width 3 ft 8 in | 1.17 m  
Platform Capacity 992 lb | 450 kg

### Key Features

Electric scissor lift adopting an energy-efficient electric drive system with zero emissions and low noise.



## 32ft Scissor Lift - Electric

JLG R3246

FOR HIRE

FOR SALE

Max Working Height 38 ft 9 in | 11.8 m  
Machine Width 3 ft 10 in | 1.17 m  
Platform Capacity 705 lb | 320 kg

### Key Features

Lightweight with simplified lift system.  
Pothole protection for increased ground clearance.  
Complies with Aust Standard AS/NZS 1418.10.



## 46ft Scissor Lift - Electric

GENIE GS-4655E

FOR HIRE

FOR SALE

Max Working Height 51 ft 9 in | 15.95 m  
Machine Width 4 ft 7 in | 1.41 m  
Platform Capacity 770 lb | 350 kg

### Key Features

Powerful AC electric drive motors for unmatched driving performance and industry-leading runtime per battery charge. Quiet, zero-emission electric operation.



## 22ft Scissor Lift - Rough Terrain

SNORKEL S2255RT

FOR HIRE

FOR SALE

Max Working Height 27 ft 88 in | 8.5 m  
Machine Width 4 ft 75 in | 1.45 m  
Platform Capacity 926 lb | 420 kg

### Key Features

Equipped with long-lasting lithium batteries. Suitable for indoor and outdoor use without sacrificing power. Features ultra-narrow width and low weight.



## 26ft Scissor Lift - Rough Terrain

GENIE GS-2669 RT

FOR HIRE

FOR SALE

Max Working Height 32 ft | 9.7 m  
Machine Width 5 ft 9 in | 1.75 m  
Platform Capacity 1,500 lb | 680 kg

### Key Features

Tough construction-oriented four-wheel drive machine. Up to 45% grade-ability for demanding outdoor sites. Foam-filled, rough-terrain tyres.



## 33ft Scissor Lift - Rough Terrain

GENIE GS-3369 RT

FOR HIRE

FOR SALE

Max Working Height 39 ft | 11.75 m  
Machine Width 5 ft 9 in | 1.75 m  
Platform Capacity 1,000 lb | 454 kg

### Key Features

Four-wheel drive and positive traction control. Drive and function at full height. 40% grade-ability. Equipped with foam-filled, rough-terrain tyres.



## 33ft Scissor Lift - Rough Terrain

SNORKEL 3370 RT

FOR HIRE

FOR SALE

Max Working Height 39 ft | 11.75 m  
Machine Width 5 ft 9 in | 1.76 m  
Platform Capacity 1,000 lb | 454 kg

### Key Features

A compact diesel scissor lift with an excellent performance. Standard features include auto level outriggers for stability and a roll-out deck extension for accessibility.



## 33ft Scissor Lift - Rough Terrain

JLG 3396RT

FOR HIRE

Max Working Height 33 ft | 10.06 m  
Machine Width 5 ft 9 in | 1.76 m  
Platform Capacity 1,000 lb | 454 kg

### Key Features

Engine powered rough terrain models offer drive capability at full height. Features an LCD platform control box with LiftSense technology and USB charging.



## 40ft Scissor Lift - Rough Terrain

JLG RT4069

FOR HIRE

Max Working Height 46 ft | 14.12 m  
Machine Width 5 ft 9 in | 1.75 m  
Platform Capacity 800lb | 363 kg

### Key Features

Four-wheel drive and positive traction control. Up to 40% grade-ability when driving on slopes. Foam-filled, rough-terrain tyres.



## 40ft Scissor Lift - Rough Terrain

GENIE GS-4069 RT

FOR HIRE

FOR SALE

Max Working Height 46 ft | 14.12 m  
Machine Width 5 ft 9 in | 1.75 m  
Platform Capacity 800lb | 363 kg

### Key Features

Four-wheel drive and positive traction control. Up to 40% grade-ability when driving on slopes. Foam-filled, rough-terrain tyres.



## 43ft Scissor Lift - Rough Terrain

GENIE GS-4390 RT

FOR HIRE

FOR SALE

Max Working Height 49 ft | 14.75 m  
Machine Width 7 ft 8 in | 2.36 m  
Platform Capacity 1,500 lb | 680 kg

### Key Features

Built to tackle the most rigorous job site conditions. Up to 50% grade-ability when driving on slopes. Foam-filled, rough-terrain tyres.



## 53ft Scissor Lift - Rough Terrain

GENIE GS-5390 RT

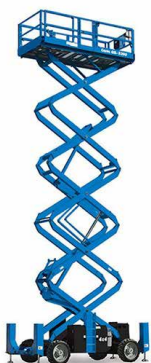
FOR HIRE

FOR SALE

Max Working Height 59 ft | 17.95 m  
Machine Width 7 ft 8 in | 2.36 m  
Platform Capacity 1,500 lb | 680 kg

### Key Features

4 Wheel drive with positive traction control. Proportional lift and drive. Up to 50% grade-ability. Foam-filled, rough-terrain tyres.



# TRAILER-MOUNTED BOOMS

**BROOKS**  
ACCESS

1300 BROOKS (276 657)  
sales@brooksaccess.com.au  
brooksaccess.com.au

## 34ft Trailer-Mounted Boom Lift

GENIE TZ-34/20

FOR HIRE

FOR SALE

Max Working Height 40 ft | 12.36 m  
Max Horizontal Reach 18 ft 4 in | 5.59 m  
Platform Capacity 500 lb | 227 kg Unrestricted

### Key Features

Rugged and heavy-duty, yet lightweight  
359° non-continuous turntable  
rotation for versatile positioning.



## 42ft Trailer-Mounted Boom Lift

Snorkel MHP 13/35

FOR HIRE

FOR SALE

Max Working Height 41 ft 3 in | 12.61 m  
Max Horizontal Reach 18 ft 37 in | 5.6 m  
Platform Capacity 500 lb | 227 kg Unrestricted

### Key Features

Features automatic self-levelling stabilisers, platform  
foot switch, rotating basket mount, Heavy duty  
jockey wheel, heavy duty tow coupling.



## 42ft Trailer-Mounted Boom Lift

Snorkel MHP 13AT

FOR HIRE

FOR SALE

Max Working Height 42 ft 32 in | 12.9 m  
Max Horizontal Reach 21 ft | 6.4 m  
Platform Capacity 474 lb | 215 kg Unrestricted

### Key Features

Features automatic self-levelling stabilisers, platform  
foot switch, rotating basket mount, Heavy duty  
jockey wheel, heavy duty tow coupling.



## 50ft Trailer-Mounted Boom Lift

GENIE TZ-50

FOR HIRE

FOR SALE

Max Working Height 55 ft 6 in | 17.09 m  
Max Horizontal Reach 29 ft 2 in | 8.89 m  
Platform Capacity 440 lb | 200 kg Unrestricted

### Key Features

Easy to transport. Can be towed behind vehicles  
with a 50 mm ball coupler. 200 kg capacity  
across the range of motion.



# TELESCOPIC HANDLERS

**BROOKS**  
ACCESS

1300 BROOKS (276 657)  
sales@brooksaccess.com.au  
brooksaccess.com.au

## 2.5-tonne Telehandler

JCB 525-60

FOR HIRE

Maximum Lift Capacity 5511 lb | 2500 kg  
Maximum Lifting Height 19 ft 6 in | 6 m  
Maximum Engine Power 55 kW

### Key Features

Excellent visibility and manoeuvrability, versatile performance, potent power and innovation-driven efficiency are all part of the package. 4WD comes as standard with two-speed hydrostatic transmission.



## 3.1-tonne Telehandler

JCB 531-70

FOR HIRE

Maximum Lift Capacity 6834 lb | 3100 kg  
Maximum Lifting Height 23 ft | 7 m  
Maximum Engine Power 81 kW

### Key Features

The latest JCB 531-70 Construction Loadall uses a combination of individual hydraulic wheel motors and four-wheel steer for superb manoeuvrability.



## 3.2-tonne Telehandler

MANITOU MT-X 732

FOR HIRE

Maximum Lift Capacity 7054 lb | 3200 kg  
Maximum Lifting Height 23 ft | 6.9 m  
Maximum Engine Power 70 kW

### Key Features

The all-terrain Manitou MT-X 732 is a fully mine and agriculture spec'd machine providing versatility and efficiency in all sectors.



## 3.2-tonne Telehandler

JCB 532-60 AG

FOR HIRE

Maximum Lift Capacity 7054 lb | 3200 kg  
Maximum Lifting Height 20 ft 4 in | 6.22 m  
Maximum Engine Power 97 kW

### Key Features

12% increase in size to give best-in-class cab volume, 50% reduction in cab noise to give a best-in-class 69dBA, 14% increase in upward visibility through new seamless one-piece curved glazing.



## 3.2-tonne Telehandler

JCB 532-70 AG

FOR HIRE

Maximum Lift Capacity 7054 lb | 3200 kg  
Maximum Lifting Height 22 ft 9 in | 7 m  
Maximum Engine Power 112 kW

### Key Features

12% increase in size to give best-in-class cab volume, 50% reduction in cab noise to give a best-in-class 69dBA, 14% increase in upward visibility through new seamless one-piece curved glazing.



## 3.5-tonne Telehandler

MERLO 35.7-115

FOR HIRE

FOR SALE

Maximum Lift Capacity 7716 lb | 3500 kg  
Maximum Lifting Height 21 ft 6.5 in | 6.6 m  
Maximum Engine Power 90 kW

### Key Features

Lowest in-class weight minimises consumption while delivering max lifting capacity. Improved acceleration and higher maximum speed.



## 4-tonne Telehandler

MANITOU MT-X 1440

FOR HIRE

Maximum Lift Capacity 8818 lb | 4000 kg  
Maximum Lifting Height 44 ft | 13.5 m  
Maximum Engine Power 74.5 kW

### Key Features

Designed for sites requiring increased lift height. You can safely remove loads thanks to the broad outriggers which give you excellent lateral and front stability.



## 4-tonne Telehandler

MANITOU MT-X 1840

FOR HIRE

Maximum Lift Capacity 8818 lb | 4000 kg  
Maximum Lifting Height 58 ft | 17.6 m  
Maximum Engine Power 75.3 kW

### Key Features

Designed for sites requiring increased lift height. You can safely remove loads thanks to the outriggers and frame levelling system.



## 4.1-tonne Telehandler

JCB 541-70

FOR HIRE

Maximum Lift Capacity 9039 lb | 4100 kg  
Maximum Lifting Height 23 ft | 7 m  
Maximum Engine Power 81 kW

### Key Features

4WD as standard, helping you maintain plenty of traction. Its parallel lift capability means the 541-70 Loadall offers excellent load retention.



## 4.2-tonne Telehandler

MERLO TF42.7-100

FOR HIRE

FOR SALE

Maximum Lift Capacity 8818 lb | 4200 kg  
Maximum Lifting Height 24 ft | 7.2 m  
Maximum Engine Power 74 kW

### Key Features

Equipped with a Kubota cylinder, 100hp Engine, that helps deliver better acceleration and higher maximum speed of 40km/h.



# TELESCOPIC HANDLERS

**BROOKS**  
ACCESS

☎ 1300 BROOKS (276 657)  
✉ sales@brooksaccess.com.au  
🌐 brooksaccess.com.au

## 6-tonne Telehandler

**MERLO P60.10EE**

**FOR HIRE**

Maximum Lift Capacity 13227 lb | 6000 kg  
Maximum Lifting Height 31 ft | 9.55 m  
Maximum Engine Power 74 kW

### Key Features

Designed to work in the most demanding conditions where performance in terms of lifting capacity and engine power make all the difference.



## 7-tonne Telehandler

**Dieci Samson 70.10**

**FOR HIRE**

Maximum Lift Capacity 15432 lb | 7000 kg  
Maximum Lifting Height 31 ft 2 in | 9.5 m  
Maximum Engine Power 93 kW

### Key Features

Anti-tipping device with peorative movement block  
Soundproof closed cab, ROPS-FOPS approved, with heater.  
Self-locking front axle differential (limited slip 45%).



## 7.2-tonne Telehandler

**MERLO P72.10**

**FOR HIRE**

**FOR SALE**

Maximum Lift Capacity 15873 lb | 7200 kg  
Maximum Lifting Height 30 ft 18 in | 9.2 m  
Maximum Engine Power 74 kW

### Key Features

Equipped with active cab suspension, which ensures effective damping under all load, driving and speed conditions. Versatility in agricultural, construction, waste management.



# FORKLIFTS

**BROOKS**  
ACCESS

1300 BROOKS (276 657)  
sales@brooksaccess.com.au  
brooksaccess.com.au

## 2.5-tonne Forklift

**HYSTER H2.5XT** **FOR HIRE**

Maximum Lift Capacity 5511 lb | 2500 kg  
Maximum Lifting Height 20 ft 83 in | 6.35 m  
Load Centre 1 ft 64 in | 0.5 m

### Key Features

Ergonomic operator controls, low cost of operation, easy maintenance & advanced safety features.



## 2.5-tonne Forklift

**XCMG FD25T-JBN** **FOR HIRE** **FOR SALE**

Maximum Lift Capacity 5511 lb | 2,500 kg  
Maximum Lifting Height 13 ft 35 in | 4.07 m  
Load Centre 1 ft 64 in | 0.5 m

### Key Features

XCMG's FD25T features ergonomic operator controls, low cost of operation, and easy maintenance.



## 3-tonne Forklift

**HYSTER H3.0XT LPG** **FOR HIRE**

Maximum Lift Capacity 6614 lb | 3000 kg  
Maximum Lifting Height 20 ft 67 in | 6.30 m  
Load Centre 1 ft 64 in | 0.5 m

### Key Features

Ergonomic operator controls, low cost of operation, easy maintenance & advanced safety features.



## 3.5-tonne Forklift

**LIFTSMART LS-RT35 4 RT** **FOR HIRE**

Maximum Lift Capacity 11023 lb | 3500 kg  
Maximum Lifting Height 13 ft 45 in | 4.1 m  
Load Centre 1 ft 9 in | 0.6 m

### Key Features

4WD forklifts are equipped with Cummins engines offering powerful performance and reliability whilst being easy to maintain.



## 3.5-tonne Forklift

**XCMG FD35T JEN** **FOR HIRE** **FOR SALE**

Maximum Lift Capacity 7716 lb | 3,500 kg  
Maximum Lifting Height 9 ft 84 in | 3 m  
Load Centre 1 ft 64 in | 0.5 m

### Key Features

XCMG's FD35T features ergonomic operator controls, low cost of operation, and easy maintenance.



## 4.5-tonne Forklift

**JCB 945-4 RT** **FOR HIRE**

Maximum Lift Capacity 9920 lb | 4,500 kg  
Maximum Lifting Height 14 ft 76 in | 4.5 m  
Load Centre 1 ft 9 in | 0.6 m

### Key Features

Rough terrain forklift with Synchro Shuttle transmission and side shift function for fast and smooth directional changes.



## 5-tonne Forklift

**HYSTER H5.0FT** **FOR HIRE**

Maximum Lift Capacity 11023 lb | 5000 kg  
Maximum Lifting Height 13 ft 45 in | 4.1 m  
Load Centre 1 ft 9 in | 0.6 m

### Key Features

These forklift trucks give outstanding power and reliability for the toughest, most arduous and challenging applications.



## 5-tonne Forklift

**MANITOU M-X 50-4** **FOR HIRE**

Maximum Lift Capacity 11023 lb | 5000 kg  
Maximum Lifting Height 13 ft 45 in | 4.1 m  
Load Centre 1 ft 9 in | 0.6 m

### Key Features

Designed for activities on difficult terrain or with obstacles. The high driving position offers a 360° panoramic vision for enhanced safety of the operator.



## 5-tonne Forklift

**ENFORCER FLDAXF50-08C1XS** **FOR HIRE**

Maximum Lift Capacity 11023 lb | 5000 kg  
Maximum Lifting Height 13 ft 45 in | 4.1 m  
Load Centre 1 ft 9 in | 0.6 m

### Key Features

Designed for tough and rugged applications. Premium hydraulics ensure functional excellence, while intuitive controls provide smooth and seamless handling.



## 5-tonne Forklift

**LIFTSMART LS-RT50 4 RT** **FOR HIRE**

Maximum Lift Capacity 11023 lb | 5000 kg  
Maximum Lifting Height 19 ft 68 in | 6 m  
Load Centre 1 ft 9 in | 0.6 m

### Key Features

4WD forklifts are equipped with Cummins engines offering powerful performance and reliability whilst being easy to maintain.



# FORKLIFTS

**BROOKS**  
ACCESS

☎ 1300 BROOKS (276 657)  
✉ sales@brooksaccess.com.au  
🌐 brooksaccess.com.au

## 9-tonne Forklift

**CROWN CD90S-D**

FOR HIRE

Maximum Lift Capacity 19842 lb | 9000 kg  
Maximum Lifting Height 13 ft 45 in | 4.1 m  
Load Centre 3 ft 9 in | 1.2 m

### Key Features

Features great operator comfort and comes with an Operator Sensing System to provide high operator and forklift safety.



## 16-tonne Forklift

**HYSTER H16.00XM**

FOR HIRE

Maximum Lift Capacity 35274 lb | 16000 kg  
Maximum Lifting Height 16 ft | 4.5 m  
Load Centre 3 ft 9 in | 1.2 m

### Key Features

Equipped with heavy duty Vista masts with a wide range of carriages available to suit the toughest applications including non-sideshift, sideshift and individual or simultaneous fork-positioning.



## 16-tonne Forklift

**KALMAR DCG160-12**

FOR HIRE

Maximum Lift Capacity 35274 lb | 16000 kg  
Maximum Lifting Height 16 ft | 4.5 m  
Load Centre 3 ft 9 in | 1.2 m

### Key Features

Complete heavy duty overhead guard  
Electronically controlled and monitored  
4 cylinder turbo diesel engine 129 kW @ 2300 rpm



## 22-tonne Crane

FOR HIRE

**TEREX Franna AT22** (22 tonne at 1.4m radius)

Max tip height	55 ft 77 in   17 m	Articulation	40° R / 40° L
Maximum boom length	58 ft 72 in   17.9 m	Engine Type	Mercedes OM 906
Machinery hook	10,000 kg	Transmission	Allison 6 speed

### Key Features

Boasting maximum safety features and superior capabilities than that of other pick and carry cranes in the field. Wide stance boom lift cylinders enhance operator's vision. Easy access to all key maintenance points. Modern cabin design ensures maximum comfort for the operator.



## 25-tonne Crane

FOR HIRE

**TEREX Franna MAC25-4**

Max tip height	62 ft 33 in   19 m	Articulation	40° R / 40° L
Maximum boom length	60 ft 36 in   18.4 m	Engine Type	Mercedes OM 906
Machinery hook	15,000 kg	Transmission	Allison 6 speed

### Key Features

The MAC 25 offers maximum safety, excellent roadability, intuitive operation and unmatched versatility. Features automatic counterweight detection, operator settable maximum working height, maximum working radius, maximum front axle weight, rigging limits and percentage of rated capacity



# ELEVATED WORK PLATFORMS FOR SALE



*Authorised Dealers for*



*in Western Australia, Northern Territory, South Australia & North Queensland.*

 **1300 BROOKS** (1300 276 657)

 [sales@brooksequipment.com.au](mailto:sales@brooksequipment.com.au)

 [www.brooksequipment.com.au](http://www.brooksequipment.com.au)



*“Better Being With Brooks”*



## New Equipment List

### XCMG SCISSOR LIFTS



#### 7.8 m Scissor Lift - Electric

##### XCMG XG0807ACW

Max Working Height 7.8 m  
Machine Width 0.81 m  
Platform Capacity 230 kg  
Platform Dimensions 1.67 m x 0.74 m

##### Key Features

The unique "zero inner turning radius" design allows for flexible use in narrow spaces.



#### 10 m Scissor Lift - Electric

##### XCMG XG1012AC

Max Working Height 7.8 m  
Machine Width 1.17 m  
Platform Capacity 450 kg  
Platform Dimensions 2.27 m x 1.12 m

##### Key Features

It adopts an energy-efficient electric drive system with zero emissions and low noise.



#### 10 m Scissor Lift - Electric

##### XCMG XG1008AC

Max Working Height 10 m  
Machine Width 0.81 m  
Platform Capacity 230 kg  
Platform Dimensions 2.27 m x 0.81 m

##### Key Features

It adopts an energy-efficient electric drive system with zero emissions and low noise.



#### 12 m Scissor Lift - Rough Terrain

##### XCMG XG1218RT

Max Working Height 12 m  
Machine Width 1.76 m  
Platform Capacity 455 kg  
Platform Dimensions 2.88 m x 1.52 m

##### Key Features

Engine Kubota, 18.2 kW/ 3000 rpm  
Tipping alarms, 200 mm ground clearance.



#### 15 m Scissor Lift - Rough Terrain

##### XCMG XG1523RT

Max Working Height 15 m  
Machine Width 2.29 m  
Platform Capacity 680 kg  
Platform Dimensions 3.980 m x 1.83 m

##### Key Features

Kubota Euro stage V emission, 115L hydraulic oil tank  
115L diesel fuel tank. 4-wheel multi-disc brakes.



#### 18.1 m Scissor Lift - Rough Terrain

##### XCMG XG1823RT

Max Working Height 18.1 m  
Machine Width 2.86 m  
Platform Capacity 680 kg  
Platform Dimensions 3.980 m x 1.83 m

##### Key Features

Kubota Euro stage V emission, 115L hydraulic oil tank  
115L diesel fuel tank. 12V DC emergency power.





## New Equipment List

### XCMG BOOM LIFTS



#### 12.5 m Articulated Boom Lift

##### XCMG XGA12K

Working Height	12.5 m
Max Horizontal Reach	6 m
Platform Capacity	230 kg
Platform size	1.4m x 0.7m x 1.15m

##### Key Features

Platform automatic levelling system, fully proportional multi function controls, enable switch.



#### 16.6 m Articulated Boom Lift - Hybrid

##### XCMG XGA16K

Working Height	16.63 m
Max Horizontal Reach	8.82 m
Platform Capacity	256/350 kg (Limited)
Platform size	1.83m x 0.76m x 1.15m

##### Key Features

Electrical system with distributed PLC control technology & adaptive control of proportional valves.



#### 20.6 Articulated Boom Lift - Hybrid

##### XCMG XGA20K

Working Height	20.63 m
Max Horizontal Reach	12.08 m
Platform Capacity	256/350 kg (Limited)
Platform size	1.83m x 0.76m x 1.15m

##### Key Features

Four-wheel drive, climbing capacity 45%, equipped with axle balance. Ground adaptability is stronger.



#### 26.6 m Articulated Boom Lift - Diesel

##### XCMG XGA26K

Working Height	26.6 m
Working Radius	19.5 m
Platform Capacity	150/256 kg (Limited)
Platform size	2.4m x 0.9m

##### Key Features

160° Platform rotation, Axle balance system, Axle balance pressure detection system 4-wheel braking system



#### 22 m Telescopic Boom Lift - Diesel

##### XCMG XGS22K

Working Height	22 m
Working Radius	17.2 m
Platform Capacity	300/460 kg (Limited)
Platform size	2.44m x 0.9m x 1.15m

##### Key Features

The combined boom consists of a double-linked tower boom + 3 sections of telescopic boom + 1 section of small flying boom structure.



#### 40.2 m Telescopic Boom Lift - Diesel

##### XCMG XGS40K

Working Height	40.2 m
Max. Working Range	24.9 m
Platform Capacity	300/460 kg (Limited)
Platform size	2.4m x 0.9m x 1.15m

##### Key Features

Rotation angle of turntable 360 degrees continuous. Min. Turning Radius (outside) 6.8 m (Axle retracted).



#### 58.6 m Telescopic Boom Lift - Diesel

##### XCMG XGS58K

Working Height	58.6 m
Max. Working Range	24.4 m
Platform Capacity	230/450 kg (Limited)
Platform size	2.4m x 0.9m x 1.15m

##### Key Features

Rotation angle of turntable 360 degrees continuous. Min. Turning Radius (outside) 7.6 m (Axle retracted).





## New Equipment List

### XCMG FORKLIFTS



#### 2.5-tonne Forklift

##### XCMG FD25T

Maximum Lift Capacity 2267 kg  
 Maximum Lifting Height 2.99 m  
 Load Centre 0.5 m  
 Forks width | length 0.12 m | 1.07 m

##### Key Features

Ergonomic operator controls, low cost of operation, easy maintenance.



#### 3.5-tonne Forklift

##### XCMG FD35T

Maximum Lift Capacity 3500 kg  
 Maximum Lifting Height 7 m  
 Load Centre 0.5 m  
 Forks width | length 0.12 m | 1.07 m

##### Key Features

Ergonomic operator controls, low cost of operation, easy maintenance.



#### 5-tonne Forklift

##### XCMG FD50T

Maximum Lift Capacity 5000 kg  
 Maximum Lifting Height 7 m  
 Load Centre 0.5 m  
 Forks width | length 0.15 m | 1.22 m

##### Key Features

Ergonomic operator controls, low cost of operation, easy maintenance.



#### 7-tonne Forklift

##### XCMG FD70T

Maximum Lift Capacity 7000 kg  
 Maximum Lifting Height 4.43 m  
 Load Centre 0.5 m  
 Forks width | length 0.15 m | 1.22 m

##### Key Features

Ergonomic operator controls, low cost of operation, easy maintenance.



#### 2-tonne Forklift

##### XCMG FGL25T - Dual Fuel Container

Maximum Lift Capacity 1800 kg  
 Maximum Lifting Height 3 m  
 Forks width | length 0.15 m | 1.22 m

##### Key Features

2.5-tonne Dual Fuel Container Mast Fork Lift. Automatic (Hydraulic) transmission, Solid tyres, Suspension seat.



#### 5-tonne Forklift

##### XCMG FGL50T - Dual Fuel Container

Maximum Lift Capacity 5000 kg  
 Maximum Lifting Height 6 m  
 Load Centre 0.5 m  
 Forks width | length 0.15 m | 1.07 m

##### Key Features

5-tonne Dual Fuel Container Mast Fork Lift. Automatic (Hydraulic) transmission.



#### 2.5-tonne Forklift

##### XCMG XCB25 - Lithium

Maximum Lift Capacity 2500 kg  
 Maximum Lifting Height 3 m  
 Load Centre 0.5 m

##### Key Features

Lithium battery/lead acid,  
 Operating Weight 1000 kg.



#### 3.5-tonne Forklift

##### XCMG XCB35 - Lithium

Maximum Lift Capacity 3500 kg  
 Maximum Lifting Height 3 m  
 Load Centre 0.5 m

##### Key Features

Lithium battery/lead acid,  
 Operating Weight 1000 kg.





## New Equipment List

### XCMG FORKLIFTS



#### 16-tonne Forklift

##### XCMG XCF1612E- Electric

Maximum Lift Capacity 16000 kg  
 Maximum Lifting Height 4 m  
 Load Centre 1.2 m  
 Forks width | length 0.2 m | 2.44 m

##### Key Features

CATL lithium iron phosphate battery.  
 Maximum power 235kW. Rear axle full hydraulic steering.



#### 16-tonne Forklift

##### XCMG XCF1606K - Counter-balanced Forklift

Maximum Lift Capacity 16000 kg  
 Maximum Lifting Height 3 m  
 Load Centre 1.2 m  
 Forks width | length 0.2 m | 1.37 m

##### Key Features

It can handle steel coils, bulk materials, concrete, logs, 20' containers and more.



#### 16-tonne Forklift

##### XCMG XCF1612KII

Maximum Lift Capacity 16000 kg  
 Maximum Lifting Height 4 m  
 Load Centre 1.2 m  
 Forks width | length 0.3 m | 2.44 m

##### Key Features

Engine QSB6.7, Rear axle full hydraulic steering.  
 Energy-efficient, ergonomic design.



#### 32-tonne Forklift

##### XCMG XCF3212K

Maximum Lift Capacity 32000 kg  
 Maximum Lifting Height 4 m  
 Load Centre 1.2 m  
 Forks width | length 0.3 m | 2.44 m

##### Key Features

Engine QSL8.9, Rear axle full hydraulic steering.  
 Energy-efficient, ergonomic design.



#### 45-tonne Reach Stacker

##### XCMG XCS4531K

Maximum Lift Capacity 45000 kg  
 Maximum Lifting Height 15.37 m  
 Side Shift 0.8 m

##### Key Features

XCMG spreader is suitable for handling 20' and 40' standard containers. LMT, anti-tilting protection device for rear axle.



#### 10-tonne Empty Container Handler

##### XCMG XCH1008K

Maximum Lift Capacity 10000 kg  
 Maximum Height 21.78 m  
 Side Shift 0.6 m

##### Key Features

Dynamic load protection technology makes the travelling speed be limited according to machine load.



#### 45-tonne Reach Stacker

##### XCMG XCS4531E3 - Electric

Maximum Lift Capacity 45000 kg  
 Maximum Lifting Height 15.37 m  
 Side Shift 0.8 m

##### Key Features

Ergonomic cab, powerful electric engine which guarantees high lifting speed of 420 / 250 mm /sec.  
 Power battery pack voltage 656V / capacity 595 km/h



# CONTACT OUR BROOKS ACCESS TEAM



**Jacinta O'Brien**  
Account Manager

☎ 0448 129 304  
@ jpickering@brooksaccess.com.au



**Luke Johnston**  
Service Manager

☎ 0457 657 535  
@ ljohnston@brooksaccess.com.au



**Katie Usher**  
Senior Hire Coordinator

☎ 0497 266 702  
@ kusher@brooksaccess.com.au



**Kaitlyn Moore**  
Hire Coordinator

☎ 8 6258 9830  
@ kmoore@brooksaccess.com.au



**India Hayes**  
Service Coordinator

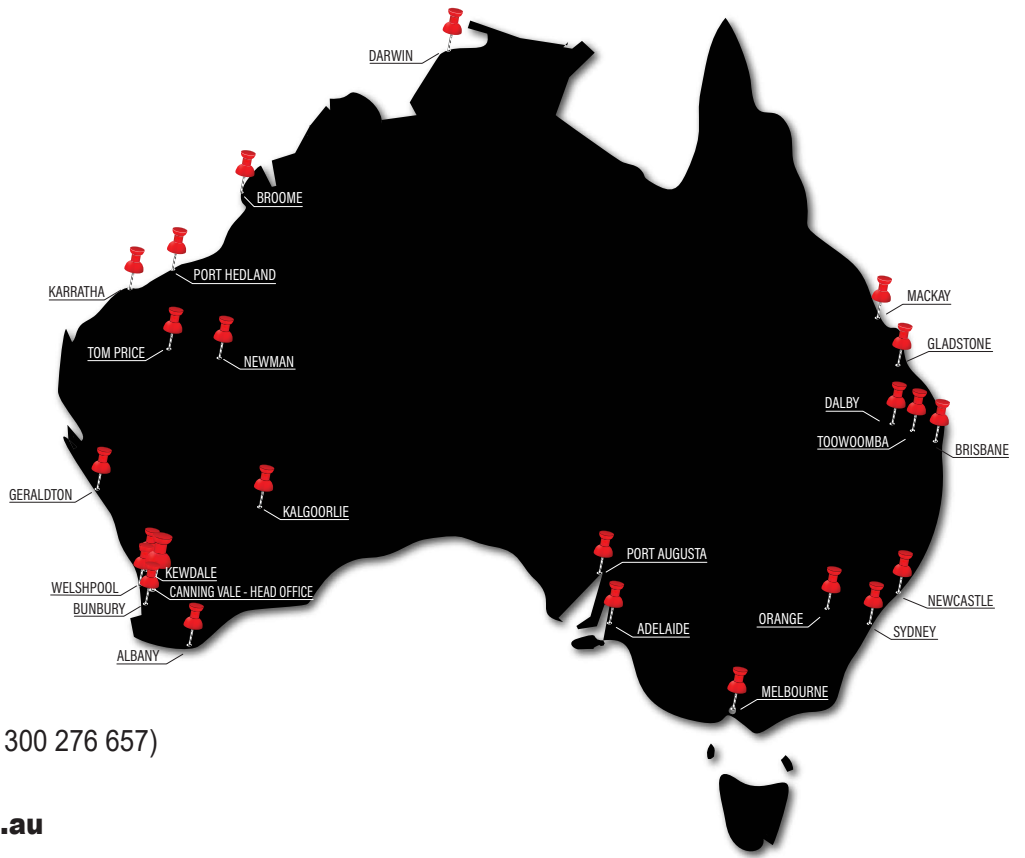
☎ 8 6258 9830  
@ ihayes@brooksaccess.com.au



**Blake Hedley**  
Leading Hand



**Arnel Calvadores**  
Field Service  
Mechanic



☎ **1300 BROOKS** (1300 276 657)  
@ sales@brooksaccess.com.au  
www.brooksaccess.com.au

**BROOKS**  
ACCESS

We are available to take your call 24 hours a day, 7 days a week.  
*“Better Being With Brooks”*