

CHAMPION IN ITS CLASS

RELIABLE
COST EFFECTIVE
PRODUCTIVE



COMPACT EXCAVATORS

SY135C

Product Specifications

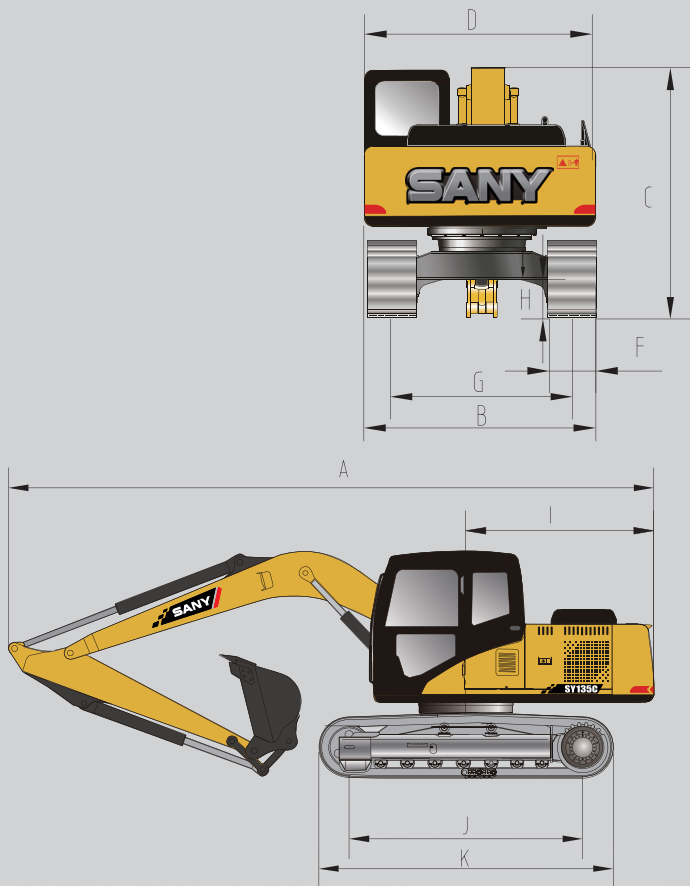
OPERATING WEIGHT
13,800 kg

GROSS POWER
73 kW / 2000 rpm

BUCKET CAPACITY
0.6m³

ENGINE
Isuzu AJ-4JJ1XT3

OVERALL DIMENSIONS



| ITEM | mm |
|------------------------------|------|
| A Transport Length | 7700 |
| B Transport Width | 2490 |
| C Transport Height | 2815 |
| D Upper Structure Width | 2490 |
| E Blade Height | 458 |
| F Standard Track Shoe Width | 600 |
| G Track Gauge | 1990 |
| H Min Ground Clearance | 425 |
| I Tail Swing Radius | 2205 |
| J Center distance of tumbler | 2930 |
| K Track Length | 3665 |
| Boom Length | 4600 |
| Arm Length | 2500 |

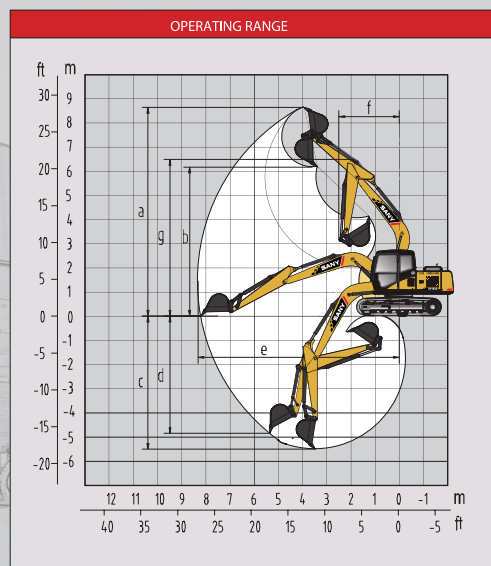
| UNDERCARRIAGE | |
|---------------------------|-----|
| Track shoe width (mm) | 600 |
| Track roller (per side) | 7 |
| Carrier roller (per side) | 2 |

WORKING RANGE

| ITEM | mm |
|-------------------------------|------|
| A Max. Digging Height | 8645 |
| B Max. Dumping Height | 6173 |
| C Max. Digging Depth | 5500 |
| D Max. Vertical Digging depth | 4850 |
| E Max. Digging Reach | 8290 |
| F Min. Swing Radius | 2500 |
| G Height at Min. Swing Radius | 6500 |

MACHINE PARAMETERS

| | |
|--------------------------|-------------------|
| Operating Weight | 13800 kg |
| Engine Type | Isuzu AJ-4JJ1 XT3 |
| Engine Max Power (Gross) | 73 kW @2000rpm |
| Engine Max Torque | 378 Nm @1600rpm |
| Engine Displacement | 3 Litre |
| Swing Speed | 12 rpm |
| Travel Speed | 5.5 /3.5 km/h |
| Tractive Effort | 110 kN |
| Bucket Digging Force | 92 kN |
| Fuel Tank Capacity | 240 Litre |
| Hydraulic Tank Capacity | 150 Litre |
| Cooling System Capacity | 22 Litre |
| Engine Oil Capacity | 13.2 Litre |
| Ground Pressure | 41.7 kPa |



Material and specifications are subject to change without notice.
Feature machines in photos may include additional equipment.



1300 BROOKS (276 657)

@ service@brooksequipment.com.au

www.brooksequipment.com.au

BROOKS
EQUIPMENT