

PRECISE & POWERFUL



MADE FOR AUSTRALIAN CONDITIONS



VIBRATORY ROLLERS

XS83
XS83PD

Product Specifications

OPERATING WEIGHT
8 t (Smooth) 8.73 t (Padfoot)

RATED POWER
74/99 kW/HP

VIBRATION FREQUENCY
30/35 Hz

ENGINE
Cummins QSF3.8

Built for tough Aussie conditions.



PRODUCT HIGHLIGHTS

- Powered by a Cummins QSF3.8 Tier 3 turbocharged engine and advanced Sauer hydraulic system, the XS83 delivers strong, fuel-efficient performance with excellent traction and gradeability across demanding compaction applications.
- Dual-frequency vibration and a robust drum design provide consistent, high-quality compaction results. Automatic traction control and a durable drive axle maximise stability and performance in varying ground conditions.
- A spacious ROPS/FOPS-certified cabin features ergonomic controls, air suspension seating, climate control and excellent all-round visibility for comfortable and safe operation throughout the working day.
- Designed for reliability, the XS83 includes simplified service access, durable components and practical monitoring systems to support efficient maintenance and long-term performance on site.

MACHINE WALKAROUND

ENGINE

Cummins QF3.8 Euro III
Throttle selector switch
Engine start and shut off key switch
Engine emergency stop inside of cab
Isolator (start motor) yellow
Pre-air-cleaner (cyclone style)
Engine oil pan coupler
Expansion tank
Fuel pre-filter with water separator
Radiator, oil cooler and intercooler, water cooler
Electro-hydraulic proportion anti-slip traction control
High pressure oil filter
Turbo timing functions
Work modes: rabbit gear, turtle gear

POWER TRAIN & HYDRAULICS

Dana axle with no spin differential
Sauer hydraulic system
Jump start receptacle
Emergency steering
Emergency brake release system

BRAKES

Emergency brake, park brake, service brake

ELECTRIC SYSTEM

Rear view camera
2 beacons
Reversing buzzer

12V cigarette lighter hole
E- stop (outside cabin)
Isolator (battery) (red)
UHF radio*
24V power port (inside cabin)
Electronically controlled joystick (with vibration button)
Radio
Wiper and washer fluid refill bottle

WORKING DEVICE

Smooth drum*
Padfoot drum*
Non-impact exciter
Vibrating frequency 30/35Hz
Flexible mud scraper
Auto-lube system*

CABIN

ISO seat bolt (2-point)
Air suspension seat
Heating and A/C
Factory standard coloured window glass
ROPS and FOPS cert. and nameplate
Electric horn
Escape hammer
Front window washer
Windows on left side can be opened
Right door can be opened
Wide view wiper
2 stereo speakers
Rubber shock absorber
Rearview mirror

FRAME

Extinguisher*
Extinguisher racket (cabin)*
Reflective tape*
Hydraulic oil level indicator
Lockable fuel refilling cap
Skid-resistant plates and handrails
Frame undercover

MONITORING SYSTEM

Warning and alarm system: overheating, engine warning, engine oil pressure, alternator, minimum fuel level, hydraulic filter clogging, air filter clogging, work mode
Gauge Display: water temperature, hour, fuel level, clock
Other displays: work mode, rear view mirrors, camera

LIGHTS

LED lights for camera (rear view camera), brake light, reversing light, position lights, turning lights, 4 working LED lights

OTHER

Emergency stop (outside)
Auto fire suppression system*
Manuals: maintenance, operation

*Optional inclusion

TECHNICALLY ADVANCED

The XCMG XS83 vibratory road roller is a new generation of technology and maximised performance. The XS83 roller is uniquely powerful, rugged, energy efficient, safe and consistent – as well as being simple to maintain. Equipped with a Tier 3 emission Cummins engine, premium hydraulic system and XCMG wet type drive axle, the entire roller offers significant advantages relating to reliability, efficiency, comfort and control.

The XS83 vibratory drum roller is available as either Smooth Drum or Padfoot Drum variants, offering you options to best suit your requirements.

POWERFUL ENGINE

Cummins QSF3.8 water-cooled turbocharged engine with high power reserve, low fuel consumption and low noise emission.

ADVANCED HYDRAULIC DRIVE

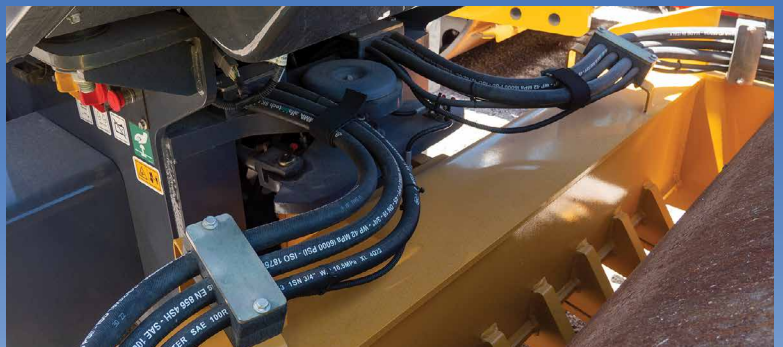
Proportional ASC closed loop hydraulic drive system composed of variable displacement pump and constant motor – ensures better drive performance and gradeability.

AUTOMATIC TRACTION CONTROL

Medium wet type axle with anti-slip differential provides automatic torque allocation and max traction to suit the road condition.

DUAL-FREQUENCY COMPACTION

Variable displacement piston pump and constant displacement hydraulic motor result in dual vibrating frequency and amplitude for excellent compaction.



"A really friendly group of people with a huge range of equipment."

Alan Hall - Brooks Equipment Customer

DESIGNED FOR THE OPERATOR

DURABLE DRUM CONSTRUCTION

Inner-cylinder drum chamber is simple and robust for excellent performance, long lifetime and high reliability.

OPERATOR-FOCUSED COMFORT

Ergonomic cabin with air conditioning, CANBUS joystick controls, control box integrated colour display, suspension seat and much more, for easy operation in maximum comfort.

ENHANCED ALL-ROUND VISIBILITY

Intelligently designed windows and a high operator seat position ensure the work area around the drum is clearly visible during operation.

EASY MAINTENANCE ACCESS

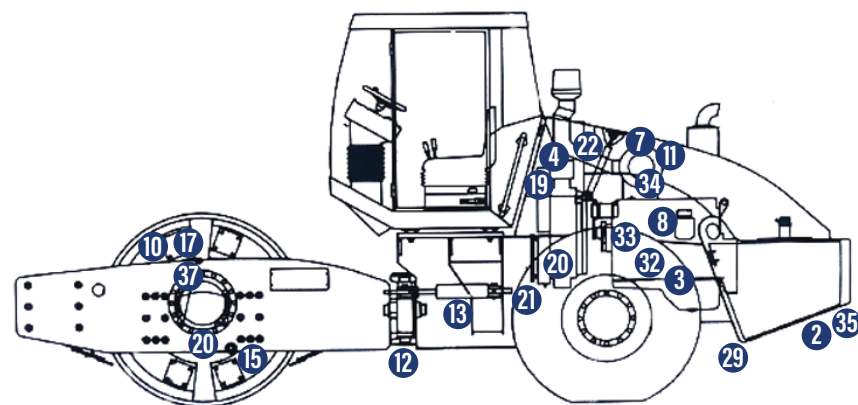
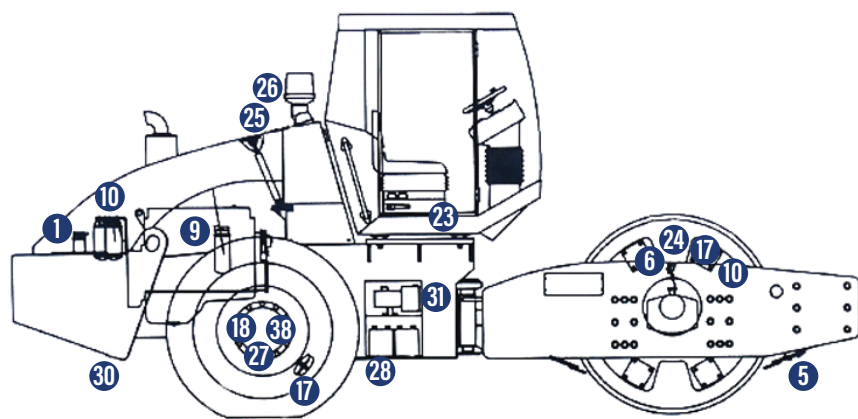
Engine hood tilts forward expansively and easily (push button) for better access to the maintenance parts.



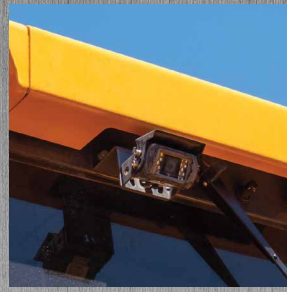
- | | |
|------------------------------|----------------------------|
| 1 Adjustable steering column | 19 Emergency stop |
| 2 Rearview mirror | 20 Hydr piloted joystick |
| 3 Fan | 21 Rabbit/turtle mode |
| 4 Fuse switches | 22 Operator controls |
| 5 Wiper function controls | 23 Key start/stop |
| 6 Sunshade | 24 12V/ 120W power port |
| 7 Radio controls | 25 Wiper washer fill point |
| 8 LED light | 26 A/C controls |
| 9 Openable window | 27 Rearview monitor |
| 10 Coat hook | |
| 11 Speaker | |
| 12 Emergency hammer | |
| 13 Adjustable arm support | |
| 14 Seat belt | |
| 15 Adjustable seat | |
| 16 All-around air vents | |
| 17 Colour LCD monitor | |
| 18 Drum controls | |



- 1 Fuel tank oil level
- 2 Hydraulic oil tank oil level
- 3 Engine oil
- 4 Water tank level
- 5 Scraper clearance
- 6 Vent plug
- 7 Air filter dust reservoir
- 8 Diesel oil filter
- 9 Engine oil filter
- 10 Hydraulic oil filter
- 11 Air filter
- 12 Hinged mechanism
- 13 Steering cylinder
- 14 Tyre pressure
- 15 Vibration wheel oil level
- 16 Reducer oil lever
- 17 Damping block
- 18 Drive axle oil level
- 19 Water tank radiator
- 20 Hydraulic oil radiator
- 21 AC condenser
- 22 Inlet pipe
- 23 AC system
- 24 Frame bearing lubrication
- 25 Support cylinder lubrication
- 26 Hood hinge lubrication
- 27 Drive axle lubrication
- 28 Battery
- 29 Hydraulic oil tank
- 30 Diesel oil tank
- 31 Hydraulic oil of pump station
- 32 Engine valve clearance
- 33 Engine belt
- 34 Air filter element
- 35 Hydraulic oil inside of oil tank
- 36 Lubrication oil inside of wheel
- 37 Reducer lubrication oil
- 38 Axle braking friction disc clearance



EASY SERVICE ACCESS



XS83/ XS83PD

Vibratory Roller

DIMENSIONS & SPECIFICATIONS



Scan to view the XS83 product brochure



Scan to view the XS83PD product brochure

MAIN SPECIFICATIONS

ENGINE

Type	Cummins QSF3.8
Rated Power	Electronic control water-cooled 74 kW / 2200 rpm

HYDRAULIC SYSTEM

Charge Pressure of Drive System	2.4 MPa
Relief Pressure of Drive System	38 MPa
Relief Pressure of Vibration System	30 MPa
Relief Pressure of Steering System	14 MPa

TYRES

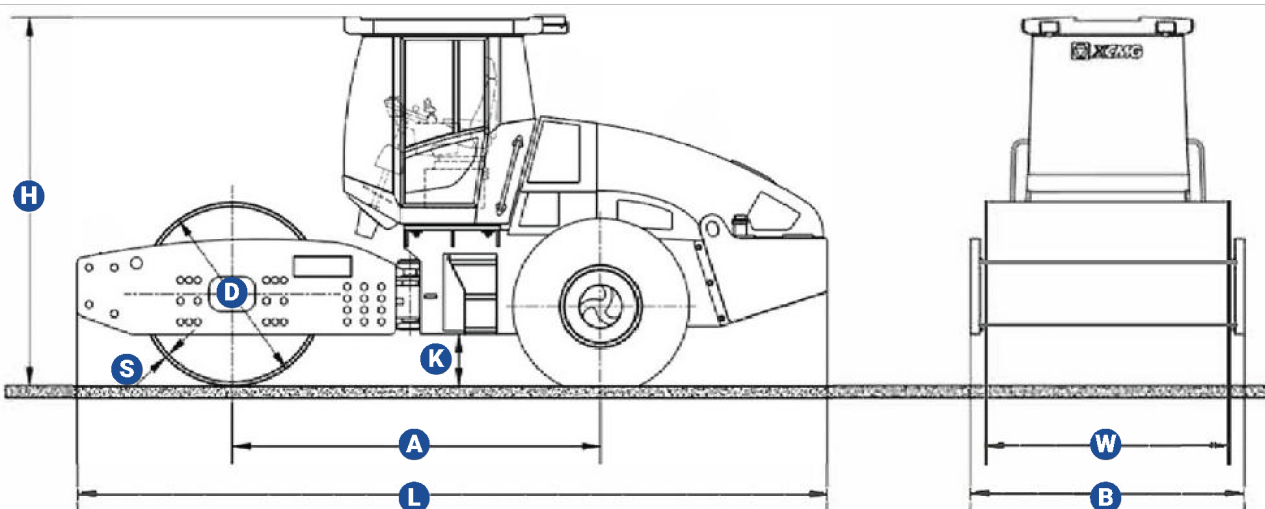
Spec.	405/70-24-16PR EMR1
Ply Rating	16
Air Pressure	380-400 KPa

WEIGHT PARAMETERS

Operating Weight	
Smooth Drum	8000 kg
Padfoot Drum	8730 kg
Front Axle Weight	
Smooth Drum	3800 kg
Padfoot Drum	4530 kg
Rear Axle Weight	
Smooth Drum	4200 kg
Padfoot Drum	4200 kg
Static Linear Load	
Smooth Drum	221.7 kg/cm
Padfoot Drum	-

DIMENSIONS & WORKING SCOPE

Operating speed	0-5; 0-11 km
Theoretical gradeability	50%
Min. turning radius	4000/5860 mm
Ground clearance	
Smooth Drum	270 mm
Padfoot Drum	330 mm
Wheel base	2680 mm
Steering angle	+ - 33
Oscillating angle	+ - 10
Braking distance	3.9m
Vibration frequency	30/35 Hz
Nominal amplitude	
Smooth Drum	18/0.9 mm
Padfoot Drum	1.5/0.75 mm
Exciting force (High/ low frequency)	125/85 kN
Drum diameter	1220 mm
Drum width	1680 mm
A Wheelbase	2680 mm
B Overall Width	1860 mm
D Wheel Diameter	1220 mm
H Overall Height (Top of Cab)	
Smooth Drum	3040 mm
Padfoot Drum	3120 mm
K Min. Ground Clearance	
Smooth Drum	270 mm
Padfoot Drum	330 mm
L Overall Length	5355 mm
S	20 mm
W Drum Width	1680 mm



SERVICE LIKE NO OTHER



With a dedicated Field Service team of qualified HD Mechanics, and access to OEM parts, you're connected to the best after sales support for your machine's full lifetime.

QUALITY



Quality tested machines, developed and built for Australian conditions.

GUARANTEE



All of our XCMG models come with first class warranty cover.

ANY TIME



Our team of experts are available 24 hours a day, 7 days a week.



PARTS ON YOUR DOORSTEP

Access to parts and support is made easy through XCMG's Australian Technical and Service Centre.

SUPPORT FROM BRANCHES AUSTRALIA WIDE



With Brooks Equipment branches Australia-wide, you have complete coverage for support and servicing, wherever you are in the country.

BROOKS

EQUIPMENT

Discover more about your XCMG machine



1300 BROOKS (276 657)
@ sales@brooksequipment.com.au
www.brooksequipment.com.au