



**BROOKS**  
OBR MAIA

# CAPABILITY STATEMENT



EVERY INDUSTRY, WE'VE GOT YOU COVERED!

HIRE | SITE SERVICES | ACCESS | CRANES | TRANSPORT | EQUIPMENT SALES | FINANCE | AIRWAYS

## Acknowledgement of Country

Brooks OBR MAIA respectfully acknowledges the Traditional Owners of the land on which we work, and pay respect to their Elders, past, present and emerging.



BROOKS OBR MAIA



1300 BROOKS (276 657)



[info@brooksobrmaia.com.au](mailto:info@brooksobrmaia.com.au)



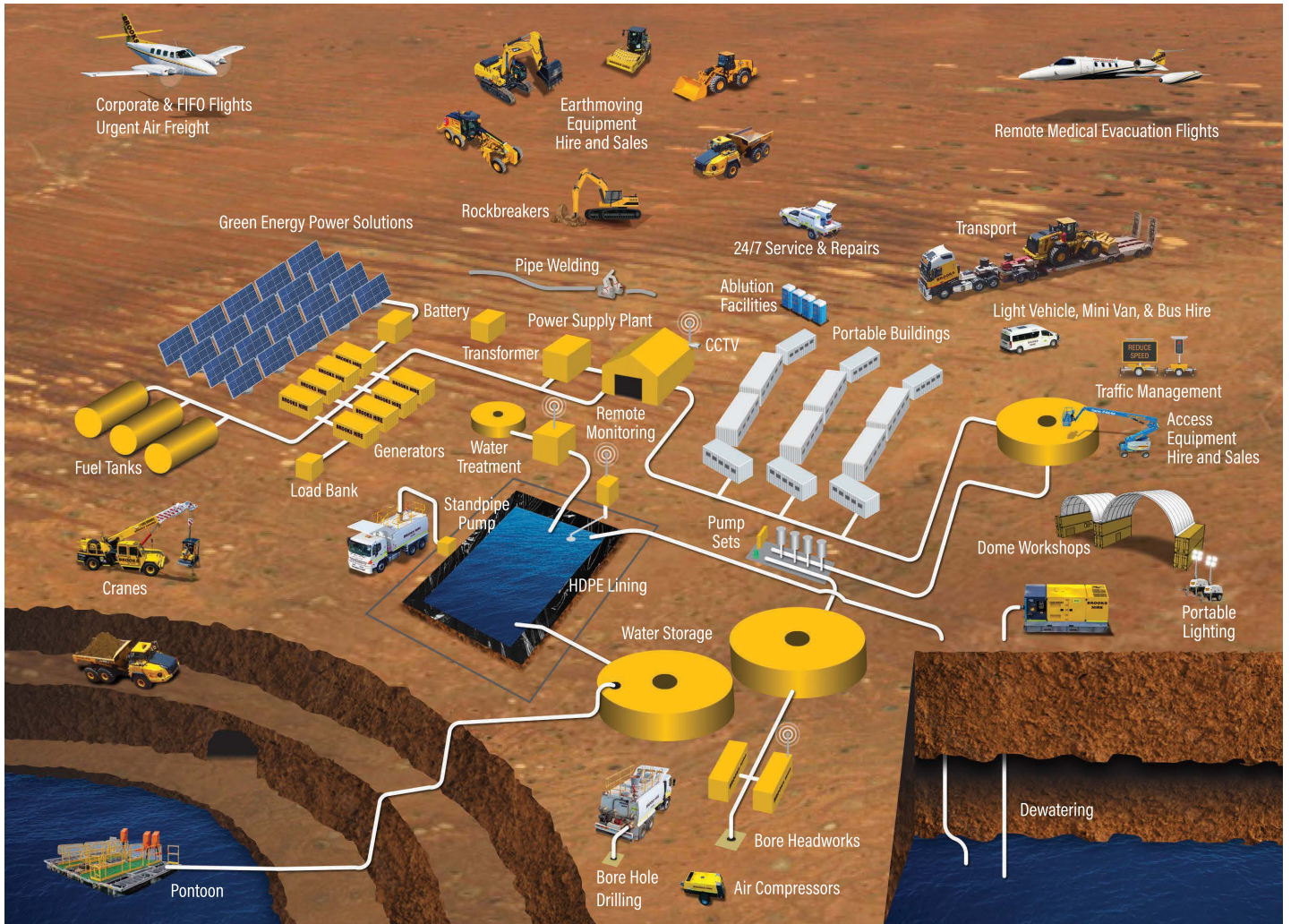
[brookshire.com.au/brooks-obr-maia](http://brookshire.com.au/brooks-obr-maia)



## CAPABILITY STATEMENT

Offers a fully rounded site service solution.

**HIRE - SITE SERVICES - ACCESS EQUIPMENT - EQUIPMENT SALES - TRANSPORT - CRANES - AIRWAYS - FINANCE**



### HIRE

Mining & construction equipment hire.

### SITE SERVICES

Site design, supply & installation.

### ACCESS & CRANES

Hire & sale of access equipment.

### EQUIPMENT SALES

Mining & construction equipment sales

### TRANSPORT

Transport of heavy machinery & earthmoving equipment.

### AIRWAYS

Corporate charters, FIFO flights, & medEvac flights



## CAPABILITY STATEMENT

**Olive Branch Resources (OBR)** is a 100% Aboriginal owned Mining Service Contractor and a subsidiary of Olive Branch Enterprise (a 100% Aboriginal family owned and operated business, founded by Timothy Champion Snr. in 2019).

### BROOKS FORMED A JOINT VENTURE WITH OLIVE BRANCH RESOURCES

In 2023, Brooks embarked on a joint venture (JV) with 100% Aboriginal owned mining service contractor, Olive Branch Resources (OBR). Registered as BROOKS OBR MAIA, the purpose of this joint venture is to give back to the Aboriginal community, and focus on the three success pathways for the traditional owners on country, to create a legacy for the next generation.

Three pathways to success: AWARENESS - EMPLOYMENT - BUSINESS OPPORTUNITIES

#### ■ AWARENESS

At Brooks, we recognise the importance of Australia's Aboriginal and Torres Strait Islander heritage and pay respect and understanding of their culture, history, and lifestyle. Brooks is committed to incorporating Aboriginal culture, people, and businesses into all aspects of our company.

In 2022, Brooks commissioned the services of talented Indigenous artist, Sister Danielle Champion to design an artwork for our new Volvo prime mover. The piece is called "The Seven Sisters", and has a special Indigenous story behind it.

In 2023, Danielle Champion and the Champion family conducted cultural awareness training with the Brooks team. To greater understand Aboriginal seasons, Danielle and the Brooks team combined their talents to produce 'Seasons'. The artwork reflects the six Aboriginal seasons, Birak (December/January), Bunuru (February/March), Djeran (April/May), Makaru (June/July), Djilba (August/September), and Kamarang (October/November).



#### ■ EMPLOYMENT

By identifying and creating sustainable employment opportunities we can ensure that we build the capabilities of Brooks, and Aboriginal and Torres Strait Islander people.

In this partnership, we envision and foresee:

- Rise in Aboriginal engagement through the Joint Venture
- Aboriginal apprentices in all Brooks locations
- Increase in Aboriginal employment in all Brooks locations

#### ■ BUSINESS OPPORTUNITIES

Aboriginal communities will see success and growth in employment pathways and educational pathways (apprenticeships and internships); that will be available to them.

Aboriginal communities will also benefit by being a supplier to not only BROOKS OBR MAIA, but also the Brooks group of companies directly, which will enhance their skills to be self-sufficient in their life and community.



Sister Danielle Champion (OBE COO) - left  
and Lenore Brooks (Brooks CBO)

# CAPABILITY STATEMENT

## SUPPORTING OUR COMMUNITY



### Binar Futures

In April 2023, Brooks recognised an opportunity to offer ongoing support to the Aboriginal community by creating a charity machine in our fleet. We used Danielle Champion's artwork to decorate a telehandler, and asked Danielle to choose an Aboriginal charity that was close to her heart. Danielle chose Binar Futures. Binar Futures is an Aboriginal youth support program that brings young people into contact with their culture. A percentage of all profits earned by the telehandler goes directly to Binar Futures.

### Malakai Champion

Malakai Champion is an up and coming AFL star. At the age of just 17 years old, Malakai was selected as a 'Future Stars' player. As one of the top 46 players in Australia, Malakai was given the opportunity to represent Western Australia at the 2023 AFL Futures match ahead of the 2023 Grand Final. Players were nominated by state talent programs, national selectors, and AFL clubs.

Brooks is a proud sponsor of Malakai, helping him achieve his AFL career goals.

### Western Heat Indigenous Netball Team

Western Heat Indigenous State Netball Team is a community lead initiative that was started by Katrina and Winston Abraham in 2018. Western Heat is an all Aboriginal, travelling netball squad that participates in Indigenous interstate netball carnivals. In January 2023, Brooks proudly sponsored the supply of all team bibs for the Western Heat girls.

### National Aboriginal and Torres Strait Islander Golf Championships

The National Aboriginal and Torres Strait Islander Championships is a 72-hole stroke event open to Aboriginal and/or Torres Strait Islander people. Brooks sponsored the 2023 event, covering various expenses, including venue rental, equipment, player transportation, accommodation, and awards ceremony arrangements.



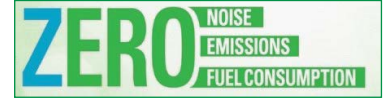
### Indigenous Emerging Business Forum 2023

The Indigenous Emerging Business Forum (IEBF) is a not-for-profit organisation that focuses on encouraging and assisting employment and business development opportunities for First Nations peoples. At the 2023 event, Brooks Hire was proud to be a VIP level table sponsor, enabling a table of 10 Aboriginal community members to attend.



## CAPABILITY STATEMENT

### GREEN ENERGY SOLUTIONS



Brooks OBR MAIA are industry leaders when it comes to taking a proactive approach to reduce our carbon footprint. Through our investment in Hybrid, Electric and Solar Powered equipment we are helping our clients to significantly lower their carbon footprint while achieving long-term cost savings.

We are committed to continue our investment in green energy solutions, and explore future technologies that will benefit our environment.

We can supply hybrid, electric and solar powered equipment in the following categories:



HYBRID GENERATORS



SOLAR LIGHT TOWERS



SOLAR HYDRATION STATIONS



SOLAR CCTV TOWERS



SOLAR SKIDS



BATTERY PACKS



ELECTRIC & HYBRID ARTICULATED BOOM LIFTS  
38ft - 60ft



ELECTRIC & HYBRID SCISSOR LIFTS  
19ft - 45ft



ELECTRIC EXCAVATOR  
1.9 tonne



HYBRID EXCAVATORS  
21 tonne



ELECTRIC (EV) LOADERS  
6 tonne



ELECTRIC FORKLIFTS  
2.5 - 16 tonne





## CAPABILITY STATEMENT

### EARTH MOVING EQUIPMENT HIRE

Our late model, low hour machines including excavators, loaders, dump trucks, rollers, graders, skid steers, dozers, and more are available for short term, long term and permanent hire.

### RESOURCES AND CAPABILITIES

Our Hire Division can supply earthmoving equipment in the following categories:



**EXCAVATORS**  
1.5t - 672t (mine spec)



**LOADERS & TOOL CARRIERS**  
1.5m<sup>3</sup> - 13m<sup>3</sup> & 2.2m<sup>3</sup> - 5.2m<sup>3</sup>



**GRADERS**  
12ft - 74ft (mine spec)



**BACKHOES**  
5.5m Dig Depth



**ARTIC. DUMP TRUCKS**  
30t to 40t (mine spec)



**SITE DUMPERS**  
9 Tonnes



**HAUL TRUCKS AC DRIVE**  
120t to 300t (mine spec)



**DOZERS**  
18t - 70t



**FUEL & WATER TRUCKS**  
14kL - 35kL



**TIPPER TRUCKS**  
11m<sup>3</sup> - 14m<sup>3</sup>



**SIDE TIPPERS**  
21m<sup>3</sup> - 24m<sup>3</sup>



**SERVICE TRUCKS**  
6kL - 11kL,  
air compressor



**3-PIN STATIC ROLLERS**  
11t - 14t



**PADFOOT ROLLERS**  
12t - 26t



**SMOOTH DRUM ROLLERS**  
7t - 26t



**MULTI TYRE ROLLERS**  
18t - 26t



**DOUBLE DRUM ROLLERS**  
2.5t - 2.7t



**SKID STEERS**  
Tracked & Wheeled



**ATTACHMENTS**  
Augers, batter & general  
purpose buckets, rock breakers,  
jibs, forks & more.

### CAPABILITY TO DELIVER

- Short term and long term hire available.
- Quality brands such as XCMG, Komatsu, Caterpillar, Volvo, Isuzu, Hino, JCB, Genie, JLG, Haulotte, Atlas Copco, Franna and more.
- We have capability to purchase brand new equipment as our clients require it.
- Team of specialist parts interpreters with a huge range of spare parts kept in store.
- We offer a large fleet of service vehicles, including the team of qualified technicians who are always on standby 24/7.

If you require a piece of equipment and Brooks OBR MAIA doesn't have it in stock, we have the capability to purchase it for you brand new.



## CAPABILITY STATEMENT

### HISTORY OF ENGAGEMENT

Our Hire Division has a long history of engagement with some of Australia's largest mining and construction companies. In addition, we are also regularly engaged by local government bodies.

#### ■ YANDI



**Client:** UON  
**Duration:** 2018 - ongoing  
**Contract Sum:** \$1.2 million - \$2.5 million +  
**Equipment:** Supply of multiple plant and equipment.  
**Outcome:** Project still in operation. Client Satisfied with equipment.

#### ■ KOODAIDERI MINE



**Client:** NRW  
**Duration:** 2013 - ongoing  
**Contract Sum:** \$2 million - \$3 million +  
**Equipment:** Supply of multiple plant and equipment.  
**Outcome:** Project still in operation. Client Satisfied with equipment.

#### ■ NAMMULDI MINE



**Client:** Rio Tinto  
**Duration:** 2019 - on going  
**Contract Sum:** \$2 million - \$3 million +  
**Equipment:** Excavators, Rollers, Loaders, Articulated Dump Trucks.  
**Outcome:** Project still in operation. Client Satisfied with equipment.

#### ■ SURAT & BOWEN BASIN GAS WORKS



**Client:** MPC Kinetic  
**Duration:** 6 Years +  
**Contract Sum:** \$1 million +  
**Equipment:** Supply of multiple plant and equipment.  
**Outcome:** Project still in operation. Client Satisfied with equipment.

#### ■ ROY HILL



**Client:** Adenco  
**Duration:** 2020 - ongoing  
**Contract Sum:** \$1 million - \$2 million  
**Equipment:** Excavators, Rollers, Loaders, Artic Dump Trucks, Water Trucks  
**Outcome:** Project still in operation. Client Satisfied with equipment.

#### ■ CITY OF CANNING WORKS



**Client:** City of Canning  
**Duration:** 5 Years +  
**Contract Sum:** \$500,000 - \$1 million  
**Equipment:** Supply of multiple plant and equipment.  
**Outcome:** Ongoing works. Client Satisfied with equipment.

#### ■ FMG ROY HILL & MESA J MINE SITES



**Client:** MACA  
**Duration:** 2022 - ongoing  
**Contract Sum:** \$1 million +  
**Equipment:** Excavators, Rollers, Loaders, Artic Dump Trucks, Water Trucks  
**Outcome:** Project still in operation. Client Satisfied with equipment.

#### ■ BOODARIE & GUDAI DARRI



**Client:** Austral  
**Duration:** 2018 - ongoing  
**Contract Sum:** \$1.5 million - 2.5 million  
**Equipment:** Excavators, Rollers, Loaders, Artic Dump Trucks, Water Trucks  
**Outcome:** Project still in operation. Client Satisfied with equipment.

#### ■ BUNBURY OUTER RING ROAD



**Client:** South West Gateway Alliance  
**Duration:** 2022 - Ongoing  
**Contract Sum:** \$2 million - \$3 million  
**Equipment:** Supply of multiple plant and equipment.  
**Outcome:** Project still in operation. Client Satisfied with equipment.



## CAPABILITY STATEMENT

### SITE SERVICES DIVISION

Our Site Services Division specialises in all aspects of site services from power, and water management, to on site buildings, and light vehicle hire. The differentiating factor of our Site Services division is that not only we supply the equipment, we now have the capability to design the whole system, install, and maintain it.

### RESOURCES AND CAPABILITIES

Site Services can supply equipment in the following categories:



**GENERATORS**  
Diesel & Hybrid  
5kVA - 1700kVA



**PUMPS**  
Dewatering, High Head,  
Vacuum Prime, Submersible



**PUMP ACCESSORIES**  
Standpipes, Hoses,  
Water Storage Tanks



**LIGHT TOWERS**  
Solar & Diesel



**SITE VEHICLES**  
4x4 Utes, Mini Vans,  
Buses



**TRAFFIC SIGNS  
& MESSAGE BOARDS**



**COMPRESSORS**  
75cfm - 2150cfm



**PORTABLE BUILDINGS**  
Dome Shelters, Site Offices,  
Crib Rooms, Sea Containers, Toilets,  
Accommodation Units



**DUST SUPPRESSION  
FANS**



**TRENCH ROLLERS**  
1340kg - 1675kg



**PLATE COMPACTORS**  
150kg - 800kg



**SERVICE TRAILERS**  
Fuel trailer, Plant  
trailer, Tandem trailer,  
Cage trailer, Pressure  
washer trailer, Fire  
fighter trailer



**SOLAR CCTV  
TOWERS**



**STEEL BARRIERS**  
Road safety



**MOBILE HYDRATION  
STATIONS & AC UNITS**



**SOLAR SKID**



**BATTERY PACK**

### CAPABILITY TO DELIVER

- Mine site dewatering, including FIFO dewatering and trade qualified technicians and specialists for equipment shutdowns.
- Construction water and dust suppression specialists
- Design, consultation, on site installation, commissioning & product training
- HDPE pipe supply & installation
- Pump rebuild & component workshop
- Workshop test tank facilities
- 24 / 7 help line, remote monitoring & management
- Water sampling & laboratory testing
- Wet hire of Hiab crane truck
- Competitive pricing with discount structure across all equipment categories
- A team of trade qualified technicians, and hire coordinators who are always on standby for around the clock service.

If you require a piece of equipment and Brooks OBR MAIA doesn't have it in stock, we have the capability to purchase it for you brand new.





## CAPABILITY STATEMENT

### HISTORY OF ENGAGEMENT

Our Site Services Division has been engaged in a number of mining and construction projects Australia wide.

#### THORNIE COCKBURN LINK



**Client:** Metronet – NEWest Alliance  
**Duration:** 5 years, since 2020  
**Requirement:** Construction water supply and management  
**Equipment:** 30kL bulk water storage tanks, standpipes, diesel remote start pumps, fully-automated electric transfer pumps. Automated solar powered valves, certified flow meters, automated pressure switches, supply & installation of HDPE pipe.  
**Service:** Installation, commissioning, mechanical & electrical maintenance, 24/7 break down support.

#### PERTH METRO



**Client:** Marlee Resources YRE project  
**Duration:** 3 years, as needed.  
**Requirement:** On site training, construction water supply, engaging Indigenous community.  
**Equipment:** Stainless steel bore pump, Control headworks and Soft starter controller, Site spec service ute.  
**Service:** Training of Indigenous personal around pumps systems, Construction water supply and site safety.

#### GOSNELL'S QUARRY



**Client:** Holcim Australia  
**Duration:** Seasonal, since 2021  
**Requirement:** Construction water supply and open pit pumping  
**Equipment:** Rapid response diesel trailer pumps complete with hose kits, Diesel Booster pump with a duty of 80 liters a second at 50m TDH, 100m Discharge hosing.  
**Service:** Site delivery, installation, maintenance and training.

#### DARWIN



**Client:** RAAF Base  
**Duration:** 6 months ongoing  
**Requirement:** Power generation  
**Equipment:** 10kVA Generators, 100kVA Generators, Lighting towers, Remote fuel cells and hoses  
**Service:** Customise Generators to suit RAAF specifications.

#### HYDROMINING



**Client:** DTMT  
**Duration:** Ongoing  
**Requirement:** Equipment ready for hire 24/7  
**Equipment:** Generators, Pumps, Compressors, Lighting towers, Customized specialist equipment.  
**Service:** 24/7 loadouts / Deliveries and support.

#### PILBARA MINE SITES



**Client:** Roy Hill  
**Duration:** 2 years  
**Requirement:** Site dewatering  
**Equipment:** High head pumps supply and installation.  
**Service:** Site delivery, design, installation and maintenance.



## CAPABILITY STATEMENT

**ACCESS DIVISION** Our Access Division specialises in the hire and sales of access equipment, cranes and elevated work platforms. Our access equipment and elevated work platforms are available for hire or sale Australia wide.

## RESOURCES AND CAPABILITIES



Our Access Division can supply equipment in the following categories:

### ARTICULATED BOOM LIFTS

34ft Diesel  
38ft Electric  
45ft Diesel | 45ft Hybrid  
46ft Diesel  
60ft Diesel | 60ft Hybrid  
60ft Extra Capacity Diesel  
62ft Diesel  
80ft Diesel  
80ft Extra Capacity Diesel  
125ft & 135ft Diesel



### SCISSOR LIFTS

14ft Electric  
19ft Electric  
22ft Diesel  
26ft Electric  
26ft Diesel  
32ft Electric  
33ft Diesel  
40ft & 43ft Diesel  
46ft Electric  
43ft & 53ft Diesel



### TELESCOPIC BOOM LIFTS

45ft Rough Terrain  
65ft Rough Terrain  
85ft Rough Terrain  
135ft Rough Terrain  
All featuring Extra Capacity



### TELESCOPIC HANDLERS

JCB 531-70 | JCB 541-70  
Manitou MT-X 732  
Manitou MLT-X 841  
Manitou MT-X 1440 | MT-X 1840  
Merlo TF42.7-100  
Merlo P60.10EE  
Merlo P72.10  
Merlo 35.7-115  
Dieci Samson 70-10  
XCMG XTF4207K



### FORKLIFTS

2.5 t - 3.5 t Hybrid | Electric  
5 t Diesel | Hybrid  
16 t Diesel | Electric  
7 t,  
9 t  
10 t  
32 t  
45 t Reach Stacker  
10 t Empty container handler



### COMPACT CRAWLER BOOMS

22 Tonne  
25 Tonne



### TRAILER MOUNTED BOOM LIFTS

34ft  
42ft  
50ft



### VERTICAL MAST LIFTS

12ft  
15ft  
20ft  
25ft  
30ft  
38ft



If you require a piece of equipment and Brooks OBR MAIA doesn't have it in stock, we have the capability to purchase it for you brand new.

## CAPABILITY TO DELIVER

- We have the capacity to purchase brand new equipment as our clients require it.
- Growing range of equipment such as Articulated Boom Lifts, Scissor Lifts, Telescopic Boom Lifts, and Telescopic Handlers.
- Short term and long term hire as well as brand new equipment sales.
- Quality brands such as XCMG, JLG, Genie, Haulotte, Manitou, Dieci, JCB, Melro, Kalmar, Hyster & Franna.
- Team of specialist Parts Interpreters with a range of spare parts kept in store.
- 24 / 7 help line, remote monitoring & management
- A team of trade qualified technicians, and hire coordinators who are always on standby for around the clock service.



## CAPABILITY STATEMENT

### HISTORY OF ENGAGEMENT

Our Access Division has been engaged in a number of mining and construction projects Australia wide.

#### COBURN MINERAL SANDS



**Client:** Sandline Resources  
**Duration:** 2 years  
**Project Value:** \$338 million

**Equipment:** 2 x Genie ZX-135/70 articulated boom lifts, 1 x Genie Z-80/60 articulated boom lift & 2 x Genie GS-1932 XH scissor lift

**Service:** Site delivery, routine maintenance and 24/7 tech support.

#### SALTWATER REVERSE OSMOSIS PROJECT



**Client:** Roy Hill  
**Duration:** Ongoing, since 2021  
**Project Value:** \$87 million  
**Requirement:** Preferred equipment supplier  
**Equipment:** Telehandlers, articulated boom lifts, telescopic boom lifts and forklifts, over 30 machines have been supplied to the site so far.

**Service:** Site delivery, routine maintenance and 24/7 tech support.

#### PERTH SHUTDOWN



**Client:** Suez  
**Duration:** Ongoing

**Requirement:** Preferred equipment supplier  
**Equipment:** 34ft, 45ft, & 60ft articulated boom lifts & 1932 scissor lifts

**Service:** Site delivery, routine maintenance and 24/7 tech support

Our Access division has sold a number of brand-new elevated work platforms to its clients Australia wide.

#### PERTH, WA



4 x Genie GS-1432m scissor lifts

#### DARWIN, NT



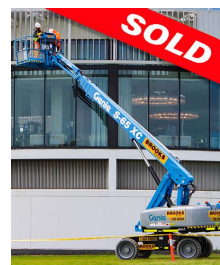
2 x Genie GS-2632 scissor lifts

#### COOGEE, WA



1 x Snorkel PushPro scissor lifts

#### NEWMAN & COOGEE, WA



6 x Genie GS-1932 XH scissor lifts  
 1 x Genie S-65 XC knuckle boom Lift

#### PILBARA, WA



1 x Genie Z-62/40 knuckle boom lift

#### DARWIN, NT



1 x Genie Z-30/20N RJ knuckle boom lift

*"The team at Brooks OBR MAIA set the benchmark when it comes to purchasing access equipment. They presented us options from many suppliers (some of which we hadn't considered) in a very short space of time to come up with a solution that best suited our needs and our budget. They are so friendly and willing to help with the technical support to back up the products they sell. We trust the team at Brooks and will confidently continue to buy from them."*



## CAPABILITY STATEMENT

### EQUIPMENT SALES DIVISION

Our Equipment Sales Division specialises in the sale of plant to the Construction and Mining Industries. We have new construction equipment for sale in the following categories; excavators, plate compactors, trench rollers, tampers, light towers, generators, air compressors and rock breakers.

Authorised Dealers for:



### RESOURCES AND CAPABILITIES

Equipment Sales can supply **Earthmoving, Mining and Construction Equipment** in the following categories:



**XCMG EXCAVATORS**  
1.75 t - 120 t



**XCMG LOADERS**  
11 t - 30.5 t



**XCMG ROLLERS**  
2.7 t - 26 t



**XCMG GRADERS**  
7.5 t - 74 t



**XCMG ARTIC. DUMP TRUCKS**  
30 t - 39 t



**XCMG SCISSOR LIFTS**



**XCMG BOOM LIFTS**



**XCMG TELEHANDLERS**



**XCMG FORKLIFTS**



**XCMG SKID STEERS**



**XCMG DOZERS**  
UP TO 30 t



**XCMG MINING & QUARRY EXCAVATORS**  
121 t - 627 t



**XCMG HAUL TRUCKS**  
39 t - 300 t



**LIGHT TOWERS**  
CPLT V15,  
GENMAC BELLATRIX



**AIR COMPRESSORS**  
T75-7, T110-7, T130-7, T175-7,  
T190-7, T190-12



**DEWATERING PUMPS**  
6NNT 6", 6612T 6"



**GENERATORS**  
5kVA - 1700kVA



**ROCK BREAKERS**  
0.5-2 t - 45 t



**TRENCH / DOUBLE DRUM ROLLERS**  
765 kg - 1675 kg



**TAMPERS**  
62 kg - 99 kg



**PLATE COMPACTORS**  
53 kg - 800 kg



**CONCRETE PLACEMENT**  
CT 36, CT 48, CRT 36,  
CRT 48PS, CRT 60X



**DEMOLITION ROBOTS**



## CAPABILITY STATEMENT

### TRANSPORT DIVISION

Our Transport Division has the freight and logistics capabilities to convey your equipment safely and efficiently to any job site in Australia, no matter how remote.

### RESOURCES AND CAPABILITIES

Our fleet of late model prime movers and low loaders are able to carry loads up to 85 tonnes in Western states and up to 67 tonnes in the Eastern states.

PRIME MOVERS



LOW LOADERS



DOLLY TRAILERS



TILT TRAYS



### CAPABILITY TO DELIVER

- Over 40 years of experience in mining and construction equipment transport.
- We have the freight and logistics capabilities to convey your equipment safely and efficiently to any job site in Australia.
- Our fleet of late model prime movers and low loaders are able to carry loads up to 85 tonnes.
- We also offer tipper trucks, side tippers, freight trucks, tilt trays, trailers and dolly trailers for hire.
- Our team of experienced transport coordinators and drivers will work with you to offer transport solutions for any heavy haulage job.



## CAPABILITY STATEMENT

### AIRWAYS DIVISION

Our Airways Division is specialising in private charter flights to individuals, and fly in fly out (FIFO) flights to the mining, oil and gas, and resources industries. Our Medevac division is an Australian based provider of medical repatriation flights which include a complete bed-to-bed service.

### RESOURCES AND CAPABILITIES



INTERNATIONAL ASSISTANCE GROUP



Our Airways Division operates a fleet of 7 dedicated B200 King Air turboprop and 6 Learjet 35A jet aircrafts in support of private & commercial



**B200 KING AIR**  
7 King Air aircrafts in the fleet

Aircrew - 1 or 2 Pilots  
 Number of Passengers - up to 11  
 Range up to - 1,480 nm (2,740 km)  
 Max. Altitude - 25,000 ft  
 Cabin - Pressurised & Air-conditioned  
 Baggage Capacity - Medium  
 Cruising Speed - 250 knots (480 km/hr)  
 Engine Type - Twin Turbo Prop



**LEARJET 35A**  
6 Aircrafts in the fleet

Aircrew - 2 Pilots  
 Number of Passengers - 6  
 Range up to - 4,500 km  
 Max. Altitude - 41,000 ft  
 Cabin - Pressurised & Air-conditioned  
 Baggage Capacity - Medium  
 Cruising Speed - 451 knots (840 km/hr)  
 Engine Type - Twin Jet

#### PRIVATE AIR CHARTERS



Save time - no check in, no luggage queues  
 Versatile - your schedule, your location, your time  
 First Class Facilities - fully-equipped departure lounge and private parking  
 Safe and Clean

#### MINING INDUSTRY FLIGHTS



FIFO & Executive flights - from Perth to any location in Australia.  
 Versatile - one off or regular contracts available  
 First Class Facilities - private departure lounge  
 Remote Airstrip Capability - locations inaccessible to commercial airlines

#### MEDICAL AIR AMBULANCE



Emergency Med-Evac - anywhere in the world.  
 Full ICU Capabilities - CASA approved aircraft, trained doctors, registered flight nurses on call.  
 Scheduled Patient Transfers - for less urgent cases.  
 Accredited Service Provider - 24/7 aeromedical standby contracts for remote companies in the mining, oil and gas industries.

#### AIR FREIGHT CHARTERS



Urgent Freight Transfers - national & International  
 Dangerous Goods - Qualified to safely transfer dangerous goods.  
 Industry Specific - oil, gas and resources sectors.  
 Remote Airstrip Capability - locations inaccessible to commercial airlines

## CAPABILITY TO DELIVER

- Over 21 years of experience in private charter flights to individuals, & fly in fly out (FIFO) flights to the mining, oil & gas, & resources industries.
- We have the flight capability to charter flights anywhere in Australia as well as internationally with remote airstrip capability.
- Our dedicated Perth-based FBO is conveniently located next to the Perth Airport regional car park and features a fully-equipped private lounge.
- Our Airways Division has the diversity & flexibility to take care of all of your charter needs (FIFO, a one-off charter, cargo, or dangerous goods transport)
- We also have a dedicated medical evacuation (medEvac) division. Medical Air Ambulance has a skilled team of highly trained professional pilots & doctors on standby, offering a complete bed to bed transfer service from anywhere in the world.



## CAPABILITY STATEMENT

### OUR LOCATIONS

#### Hire & Transport

Head Office  
30 Coulson Way  
Canning Vale WA 6155

#### Equipment Sales, Access & Site Services

Head Office  
39 - 47 Murray Road N  
Welshpool WA 6106

#### Airways & Medical Air

1 Barons Way  
Jandakot WA 6164  
38 Newton Road  
Perth Airport WA 6164

#### Bunbury

3 Richter Road  
Davenport WA 6230

#### Albany

140 Chester Pass Road  
Lange WA 6330

#### Karratha

Lot 1 Coolawanyah Road  
Karratha Ind. Estate WA 6714

#### Geraldton

67-37 Flores Road  
Webborton WA 6530

#### Kalgoorlie

2-4 Williams Street  
West Kalgoorlie WA 6430

#### Broome

2 Clementson Street  
Minyirr WA 6725

#### Newman

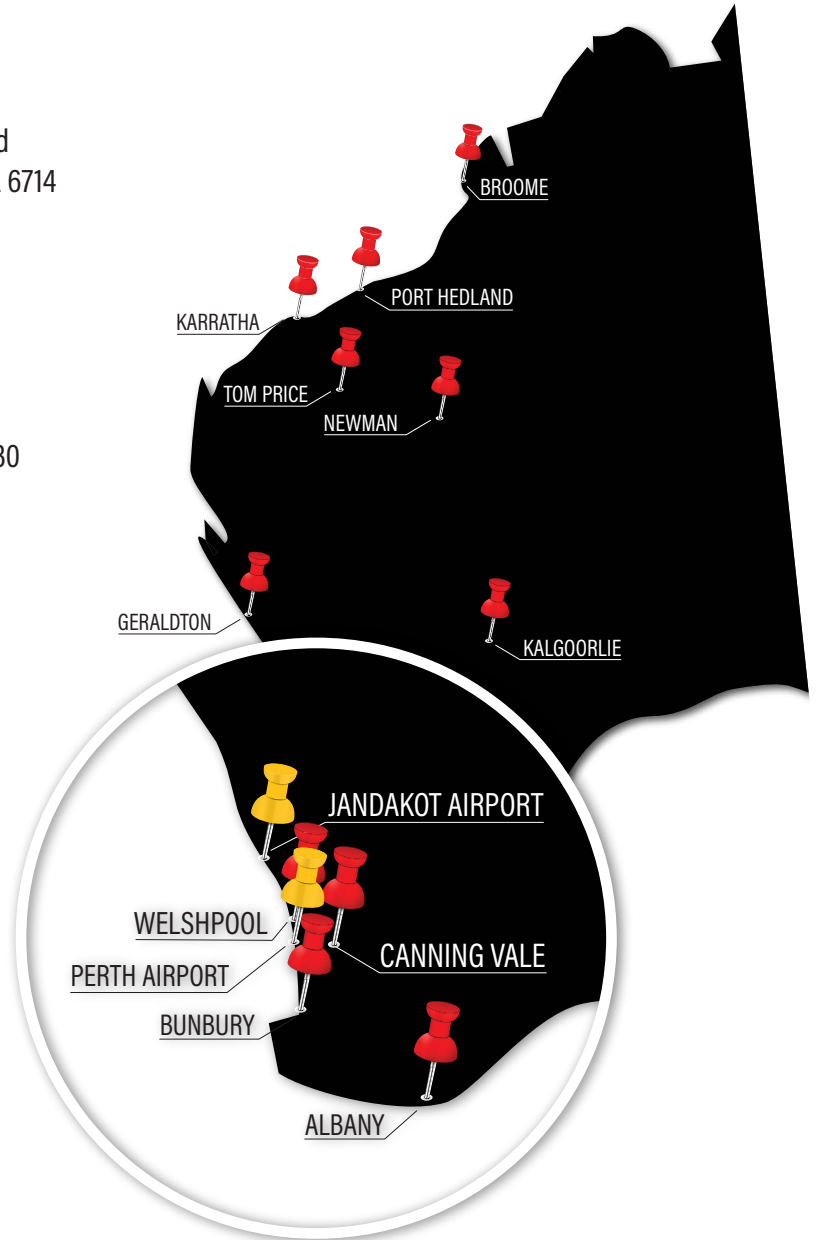
2 Bangkerbang Close  
Newman WA 6753

#### Tom Price

43 Boonderoo Road  
Tom Price WA 6751

#### Port Hedland

1 Manganese Street  
Wedgefield WA 6721



### CONTACT US

1300 BROOKS (276 657)  
info@brooksobrmaia.com.au  
brookshire.com.au/brooks-obr-maia

Lenore Brooks  
Chief Business Officer  
Brooks Group  
lbrooks@brookshire.com.au

Simon Shin  
CEO  
Olive Branch Resources  
simon.shin@obenterprise.com.au

