



BROOKS
OBR MAIA

CAPABILITY STATEMENT



EVERY INDUSTRY, WE'VE GOT YOU COVERED!

HIRE | SITE SERVICES | ACCESS | CRANES | TRANSPORT | MINING | EQUIPMENT SALES | FINANCE | AIRWAYS

Acknowledgement of Country

Brooks OBR MAIA respectfully acknowledges the Traditional Owners of the land on which we work, and pay respect to their Elders, past, present and emerging.



BROOKS OBR MAIA

 1300 BROOKS (276 657)

 info@brooksobrmaia.com.au

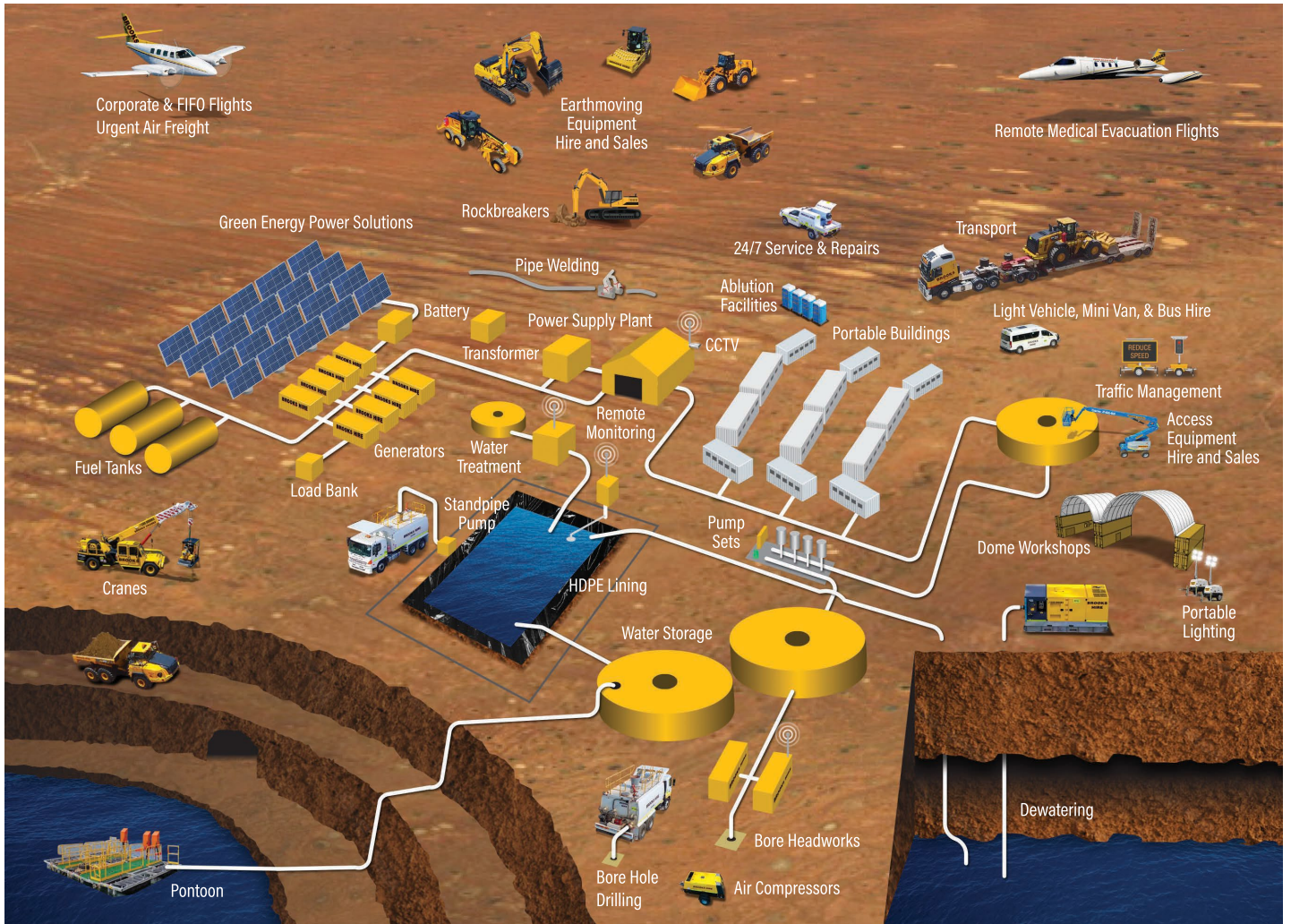
 brookshire.com.au/brooks-obr-maia



CAPABILITY STATEMENT

Offers a fully rounded site service solution.

HIRE - SITE SERVICES - ACCESS EQUIPMENT - EQUIPMENT SALES - TRANSPORT - CRANES - AIRWAYS - FINANCE



HIRE

Mining & construction equipment hire.

SITE SERVICES

Site design, supply & installation.

ACCESS & CRANES

Hire & sale of access equipment.

EQUIPMENT SALES

Mining & construction equipment sales

TRANSPORT

Transport of heavy machinery & earthmoving equipment.

AIRWAYS

Corporate charters, FIFO flights, & medEvac flights



CAPABILITY STATEMENT

Olive Branch Resources (OBR) is a 100% Aboriginal owned Mining Service Contractor and a subsidiary of Olive Branch Enterprise (a 100% Aboriginal family owned and operated business, founded by Timothy Champion Snr. in 2019).

BROOKS FORMED A JOINT VENTURE WITH OLIVE BRANCH RESOURCES

In 2023, Brooks embarked on a joint venture (JV) with 100% Aboriginal owned mining service contractor, Olive Branch Resources (OBR). Registered as BROOKS OBR MAIA, the purpose of this joint venture is to give back to the Aboriginal community, and focus on the three success pathways for the traditional owners on country, to create a legacy for the next generation.

Three pathways to success: AWARENESS - EMPLOYMENT - BUSINESS OPPORTUNITIES

■ AWARENESS

At Brooks, we recognise the importance of Australia's Aboriginal and Torres Strait Islander heritage and pay respect and understanding of their culture, history, and lifestyle. Brooks is committed to incorporating Aboriginal culture, people, and businesses into all aspects of our company.

In 2022, Brooks commissioned the services of talented Indigenous artist, Sister Danielle Champion to design an artwork for our new Volvo prime mover. The piece is called "The Seven Sisters", and has a special Indigenous story behind it.

In 2023, Danielle Champion and the Champion family conducted cultural awareness training with the Brooks team. To greater understand Aboriginal seasons, Danielle and the Brooks team combined their talents to produce 'Seasons'. The artwork reflects the six Aboriginal seasons, Birak (December/January), Bunuru (February/March), Djeran (April/May), Makaru (June/July), Djilba (August/September), and Kamarang (October/November).



■ EMPLOYMENT

By identifying and creating sustainable employment opportunities we can ensure that we build the capabilities of Brooks, and Aboriginal and Torres Strait Islander people.

In this partnership, we envision and foresee:

- Rise in Aboriginal engagement through the Joint Venture
- Aboriginal apprentices in all Brooks locations
- Increase in Aboriginal employment in all Brooks locations

■ BUSINESS OPPORTUNITIES

Aboriginal communities will see success and growth in employment pathways and educational pathways (apprenticeships and internships); that will be available to them.

Aboriginal communities will also benefit by being a supplier to not only BROOKS OBR MAIA, but also the Brooks group of companies directly, which will enhance their skills to be self-sufficient in their life and community.



Sister Danielle Champion (OBE COO) - left and Lenore Brooks (Brooks CBO)



CAPABILITY STATEMENT

SUPPORTING OUR COMMUNITY



Binar Futures

In April 2023, Brooks recognised an opportunity to offer ongoing support to the Aboriginal community by creating a charity machine in our fleet. We used Danielle Champion's artwork to decorate a telehandler, and asked Danielle to choose an Aboriginal charity that was close to her heart. Danielle chose Binar Futures. Binar Futures is an Aboriginal youth support program that brings young people into contact with their culture. A percentage of all profits earned by the telehandler goes directly to Binar Futures.

Malakai Champion

Malakai Champion is an up and coming AFL star. At the age of just 17 years old, Malakai was selected as a 'Future Stars' player. As one of the top 46 players in Australia, Malakai was given the opportunity to represent Western Australia at the 2023 AFL Futures match ahead of the 2023 Grand Final. Players were nominated by state talent programs, national selectors, and AFL clubs.

Brooks is a proud sponsor of Malakai, helping him achieve his AFL career goals.

Western Heat Indigenous Netball Team

Western Heat Indigenous State Netball Team is a community lead initiative that was started by Katrina and Winston Abraham in 2018. Western Heat is an all Aboriginal, travelling netball squad that participates in Indigenous interstate netball carnivals. In January 2023, Brooks proudly sponsored the supply of all team bibs for the Western Heat girls.

National Aboriginal and Torres Strait Islander Golf Championships

The National Aboriginal and Torres Strait Islander Championships is a 72-hole stroke event open to Aboriginal and/or Torres Strait Islander people. Brooks sponsored the 2023 event, covering various expenses, including venue rental, equipment, player transportation, accommodation, and awards ceremony arrangements.



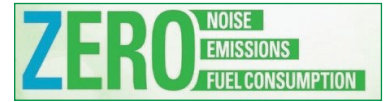
Indigenous Emerging Business Forum 2023

The Indigenous Emerging Business Forum (IEBF) is a not-for-profit organisation that focuses on encouraging and assisting employment and business development opportunities for First Nations peoples. At the 2023 event, Brooks Hire was proud to be a VIP level table sponsor, enabling a table of 10 Aboriginal community members to attend.



CAPABILITY STATEMENT

GREEN ENERGY SOLUTIONS



Brooks OBR MAIA are industry leaders when it comes to taking a proactive approach to reduce our carbon footprint. Through our investment in Hybrid, Electric and Solar Powered equipment we are helping our clients to significantly lower their carbon footprint while achieving long-term cost savings.

We are committed to continue our investment in green energy solutions, and explore future technologies that will benefit our environment.

We can supply hybrid, electric and solar powered equipment in the following categories:



HYBRID GENERATORS



SOLAR LIGHT TOWERS



SOLAR HYDRATION STATIONS



SOLAR CCTV TOWERS



SOLAR SKIDS



BATTERY PACKS



ELECTRIC & HYBRID ARTICULATED BOOM LIFTS
38ft - 60ft



ELECTRIC & HYBRID SCISSOR LIFTS
19ft - 45ft



ELECTRIC EXCAVATOR
1.9 tonne



HYBRID EXCAVATORS
21 tonne



ELECTRIC (EV) LOADERS
6 tonne



ELECTRIC FORKLIFTS
2.5 - 16 tonne





CAPABILITY STATEMENT

EARTH MOVING EQUIPMENT HIRE

Our late model, low hour machines including excavators, loaders, dump trucks, rollers, graders, skid steers, dozers, and more are available for short term, long term and permanent hire.

RESOURCES AND CAPABILITIES

Our Hire Division can supply earthmoving equipment in the following categories:



EXCAVATORS
1.5t - 672t (mine spec)



LOADERS & TOOL CARRIERS
1.5m³ - 13m³ & 2.2m³ - 5.2m³



GRADERS
12ft - 74ft (mine spec)



BACKHOES
5.5m Dig Depth



ARTIC. DUMP TRUCKS
30t to 40t (mine spec)



SITE DUMPERS
9 Tonnes



HAUL TRUCKS AC DRIVE
120t to 300t (mine spec)



DOZERS
18t - 70t



FUEL & WATER TRUCKS
14kL - 35kL



TIPPER TRUCKS
11m³ - 14m³



SIDE TIPPERS
21m³ - 24m³



SERVICE TRUCKS
6kL - 11kL,
air compressor



3-PIN STATIC ROLLERS
11t - 14t



PADFOOT ROLLERS
12t - 26t



SMOOTH DRUM ROLLERS
7t - 26t



MULTI TYRE ROLLERS
18t - 26t



DOUBLE DRUM ROLLERS
2.5t - 2.7t



SKID STEERS
Tracked & Wheeled



ATTACHMENTS
Augers, batter & general
purpose buckets, rock breakers,
jibs, forks & more.

CAPABILITY TO DELIVER

- Short term and long term hire available.
- Quality brands such as XCMG, Komatsu, Caterpillar, Volvo, Isuzu, Hino, JCB, Genie, JLG, Haulotte, Atlas Copco, Franna and more.
- We have capability to purchase brand new equipment as our clients require it.
- Team of specialist parts interpreters with a huge range of spare parts kept in store.
- We offer a large fleet of service vehicles, including the team of qualified technicians who are always on standby 24/7.

If you require a piece of equipment and Brooks OBR MAIA doesn't have it in stock, we have the capability to purchase it for you brand new.



CAPABILITY STATEMENT

HISTORY OF ENGAGEMENT

Our Hire Division has a long history of engagement with some of Australia's largest mining and construction companies. In addition, we are also regularly engaged by local government bodies.

■ YANDI



Client: UON
Duration: 2018 - ongoing
Contract Sum: \$1.2 million - \$2.5 million +
Equipment: Supply of multiple plant and equipment.
Outcome: Project still in operation. Client Satisfied with equipment.

■ KOODAIDERI MINE



Client: NRW
Duration: 2013 - ongoing
Contract Sum: \$2 million - \$3 million +
Equipment: Supply of multiple plant and equipment.
Outcome: Project still in operation. Client Satisfied with equipment.

■ NAMMULDI MINE



Client: Rio Tinto
Duration: 2019 - on going
Contract Sum: \$2 million - \$3 million +
Equipment: Excavators, Rollers, Loaders, Articulated Dump Trucks.
Outcome: Project still in operation. Client Satisfied with equipment.

■ SURAT & BOWEN BASIN GAS WORKS



Client: MPC Kinetic
Duration: 6 Years +
Contract Sum: \$1 million +
Equipment: Supply of multiple plant and equipment.
Outcome: Project still in operation. Client Satisfied with equipment.

■ ROY HILL



Client: Adenco
Duration: 2020 - ongoing
Contract Sum: \$1 million - \$2 million
Equipment: Excavators, Rollers, Loaders, Artic Dump Trucks, Water Trucks
Outcome: Project still in operation. Client Satisfied with equipment.

■ CITY OF CANNING WORKS



Client: City of Canning
Duration: 5 Years +
Contract Sum: \$500,000 - \$1 million
Equipment: Supply of multiple plant and equipment.
Outcome: Ongoing works. Client Satisfied with equipment.

■ FMG ROY HILL & MESA J MINE SITES



Client: MACA
Duration: 2022 - ongoing
Contract Sum: \$1 million +
Equipment: Excavators, Rollers, Loaders, Artic Dump Trucks, Water Trucks
Outcome: Project still in operation. Client Satisfied with equipment.

■ BOODARIE & GUDAI DARRI



Client: Austral
Duration: 2018 - ongoing
Contract Sum: \$1.5 million - 2.5 million
Equipment: Excavators, Rollers, Loaders, Artic Dump Trucks, Water Trucks
Outcome: Project still in operation. Client Satisfied with equipment.

■ BUNBURY OUTER RING ROAD



Client: South West Gateway Alliance
Duration: 2022 - Ongoing
Contract Sum: \$2 million - \$3 million
Equipment: Supply of multiple plant and equipment.
Outcome: Project still in operation. Client Satisfied with equipment.



CAPABILITY STATEMENT

SITE SERVICES DIVISION

Our Site Services Division specialises in all aspects of site services from power, and water management, to on site buildings, and light vehicle hire. The differentiating factor of our Site Services division is that not only we supply the equipment, we now have the capability to design the whole system, install, and maintain it.

RESOURCES AND CAPABILITIES

Site Services can supply equipment in the following categories:



GENERATORS
Diesel & Hybrid
5kVA - 1700kVA



PUMPS
Dewatering, High Head,
Vacuum Prime, Submersible



PUMP ACCESSORIES
Standpipes, Hoses,
Water Storage Tanks



LIGHT TOWERS
Solar & Diesel



SITE VEHICLES
4x4 Utes, Mini Vans,
Buses



**TRAFFIC SIGNS
& MESSAGE BOARDS**



COMPRESSORS
75cfm - 2150cfm



PORTABLE BUILDINGS
Dome Shelters, Site Offices,
Crib Rooms, Sea Containers, Toilets,
Accommodation Units



**DUST SUPPRESSION
FANS**



TRENCH ROLLERS
1340kg - 1675kg



PLATE COMPACTORS
150kg - 800kg



SERVICE TRAILERS
Fuel trailer, Plant
trailer, Tandem trailer,
Cage trailer, Pressure
washer trailer, Fire
fighter trailer



**SOLAR CCTV
TOWERS**



STEEL BARRIERS
Road safety



**MOBILE HYDRATION
STATIONS & AC UNITS**



SOLAR SKID



BATTERY PACK

CAPABILITY TO DELIVER

- Mine site dewatering, including FIFO dewatering and trade qualified technicians and specialists for equipment shutdowns.
- Construction water and dust suppression specialists
- Design, consultation, on site installation, commissioning & product training
- HDPE pipe supply & installation
- Pump rebuild & component workshop
- Workshop test tank facilities
- 24 / 7 help line, remote monitoring & management
- Water sampling & laboratory testing
- Wet hire of Hiab crane truck
- Competitive pricing with discount structure across all equipment categories
- A team of trade qualified technicians, and hire coordinators who are always on standby for around the clock service.

If you require a piece of equipment and Brooks OBR MAIA doesn't have it in stock, we have the capability to purchase it for you brand new.



CAPABILITY STATEMENT

HISTORY OF ENGAGEMENT

Our Site Services Division has been engaged in a number of mining and construction projects Australia wide.

THORNIE COCKBURN LINK



Client: Metronet – NEWest Alliance
Duration: 5 years, since 2020
Requirement: Construction water supply and management
Equipment: 30kL bulk water storage tanks, standpipes, diesel remote start pumps, fully-automated electric transfer pumps. Automated solar powered valves, certified flow meters, automated pressure switches, supply & installation of HDPE pipe.
Service: Installation, commissioning, mechanical & electrical maintenance, 24/7 break down support.

PERTH METRO



Client: Marlee Resources YRE project
Duration: 3 years, as needed.
Requirement: On site training, construction water supply, engaging Indigenous community.
Equipment: Stainless steel bore pump, Control headworks and Soft starter controller, Site spec service ute.
Service: Training of Indigenous personal around pumps systems, Construction water supply and site safety.

GOSNELL'S QUARRY



Client: Holcim Australia
Duration: Seasonal, since 2021
Requirement: Construction water supply and open pit pumping
Equipment: Rapid response diesel trailer pumps complete with hose kits, Diesel Booster pump with a duty of 80 liters a second at 50m TDH, 100m Discharge hosing.
Service: Site delivery, installation, maintenance and training.

DARWIN



Client: RAAF Base
Duration: 6 months ongoing
Requirement: Power generation
Equipment: 10kVA Generators, 100kVA Generators, Lighting towers, Remote fuel cells and hoses
Service: Customise Generators to suit RAAF specifications.

HYDROMINING



Client: DTMT
Duration: Ongoing
Requirement: Equipment ready for hire 24/7
Equipment: Generators, Pumps, Compressors, Lighting towers, Customized specialist equipment.
Service: 24/7 loadouts / Deliveries and support.

PILBARA MINE SITES



Client: Roy Hill
Duration: 2 years
Requirement: Site dewatering
Equipment: High head pumps supply and installation.
Service: Site delivery, design, installation and maintenance.











CAPABILITY STATEMENT

ACCESS DIVISION Our Access Division specialises in the hire and sales of access equipment, cranes and elevated work platforms. Our access equipment and elevated work platforms are available for hire or sale Australia wide.

RESOURCES AND CAPABILITIES



Our Access Division can supply equipment in the following categories:

<p>ARTICULATED BOOM LIFTS</p> <p>34ft Diesel 38ft Electric 45ft Diesel 45ft Hybrid 46ft Diesel 60ft Diesel 60ft Hybrid 60ft Extra Capacity Diesel 62ft Diesel 80ft Diesel 80ft Extra Capacity Diesel 125ft & 135ft Diesel</p> 	<p>SCISSOR LIFTS</p> <p>14ft Electric 19ft Electric 22ft Diesel 26ft Electric 26ft Diesel 32ft Electric 33ft Diesel 40ft & 43ft Diesel 46ft Electric 43ft & 53ft Diesel</p> 	<p>TELESCOPIC BOOM LIFTS</p> <p>45ft Rough Terrain 65ft Rough Terrain 85ft Rough Terrain 135ft Rough Terrain All featuring Extra Capacity</p> 	<p>TELESCOPIC HANDLERS</p> <p>JCB 531-70 JCB 541-70 Manitou MT-X 732 Manitou MLT-X 841 Manitou MT-X 1440 MT-X 1840 Merlo TF42.7-100 Merlo P60.10EE Merlo P72.10 Merlo 35.7-115 Dieci Samson 70-10 XCMG XTF4207K</p> 
<p>FORKLIFTS</p> <p>2.5 t - 3.5 t Hybrid Electric 5 t Diesel Hybrid 16 t Diesel Electric 7 t, 9 t 10 t 32 t 45 t Reach Stacker 10 t Empty container handler</p> 	<p>COMPACT CRAWLER BOOMS</p> <p>22 Tonne 25 Tonne</p> 	<p>TRAILER MOUNTED BOOM LIFTS</p> <p>34ft 42ft 50ft</p> 	<p>VERTICAL MAST LIFTS</p> <p>12ft 15ft 20ft 25ft 30ft 38ft</p> 

If you require a piece of equipment and Brooks OBR MAIA doesn't have it in stock, we have the capability to purchase it for you brand new.

CAPABILITY TO DELIVER

- We have the capacity to purchase brand new equipment as our clients require it.
- Growing range of equipment such as Articulated Boom Lifts, Scissor Lifts, Telescopic Boom Lifts, and Telescopic Handlers.
- Short term and long term hire as well as brand new equipment sales.
- Quality brands such as XCMG, JLG, Genie, Haulotte, Manitou, Dieci, JCB, Melro, Kalmar, Hyster & Franna.
- Team of specialist Parts Interpreters with a range of spare parts kept in store.
- 24 / 7 help line, remote monitoring & management
- A team of trade qualified technicians, and hire coordinators who are always on standby for around the clock service.



CAPABILITY STATEMENT

HISTORY OF ENGAGEMENT

Our Access Division has been engaged in a number of mining and construction projects Australia wide.

COBURN MINERAL SANDS



Client: Sandline Resources
Duration: 2 years
Project Value: \$338 million

Equipment: 2 x Genie ZX-135/70 articulated boom lifts, 1 x Genie Z-80/60 articulated boom lift & 2 x Genie GS-1932 XH scissor lift

Service: Site delivery, routine maintenance and 24/7 tech support.

SALTWATER REVERSE OSMOSIS PROJECT



Client: Roy Hill
Duration: Ongoing, since 2021
Project Value: \$87 million
Requirement: Preferred equipment supplier
Equipment: Telehandlers, articulated boom lifts, telescopic boom lifts and forklifts, over 30 machines have been supplied to the site so far.

Service: Site delivery, routine maintenance and 24/7 tech support.

PERTH SHUTDOWN



Client: Suez
Duration: Ongoing

Requirement: Preferred equipment supplier
Equipment: 34ft, 45ft, & 60ft articulated boom lifts & 1932 scissor lifts

Service: Site delivery, routine maintenance and 24/7 tech support

Our Access division has sold a number of brand-new elevated work platforms to its clients Australia wide.

PERTH, WA



4 x Genie GS-1432m scissor lifts

DARWIN, NT



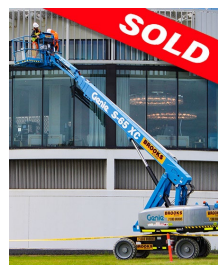
2 x Genie GS-2632 scissor lifts

COOGEE, WA



1 x Snorkel PushPro scissor lifts

NEWMAN & COOGEE, WA



6 x Genie GS-1932 XH scissor lifts
 1 x Genie S-65 XC knuckle boom Lift

PILBARA, WA



1 x Genie Z-62/40 knuckle boom lift

DARWIN, NT



1 x Genie Z-30/20N RJ knuckle boom lift

"The team at Brooks OBR MAIA set the benchmark when it comes to purchasing access equipment. They presented us options from many suppliers (some of which we hadn't considered) in a very short space of time to come up with a solution that best suited our needs and our budget. They are so friendly and willing to help with the technical support to back up the products they sell. We trust the team at Brooks and will confidently continue to buy from them."



CAPABILITY STATEMENT

EQUIPMENT SALES DIVISION

Our Equipment Sales Division specialises in the sale of plant to the Construction and Mining Industries. We have new construction equipment for sale in the following categories; excavators, plate compactors, trench rollers, tampers, light towers, generators, air compressors and rock breakers.

Authorised Dealers for:



RESOURCES AND CAPABILITIES

Equipment Sales can supply **Earthmoving, Mining and Construction Equipment** in the following categories:



XCMG EXCAVATORS
1.75 t - 120 t



XCMG LOADERS
11 t - 30.5 t



XCMG ROLLERS
2.7 t - 26 t



XCMG GRADERS
7.5 t - 74 t



XCMG ARTIC. DUMP TRUCKS
30 t - 39 t



XCMG SCISSOR LIFTS



XCMG BOOM LIFTS



XCMG TELEHANDLERS



XCMG FORKLIFTS



XCMG SKID STEERS



XCMG DOZERS
UP TO 30 t



XCMG MINING & QUARRY EXCAVATORS
121 t - 627 t



XCMG HAUL TRUCKS
39 t - 300 t



LIGHT TOWERS
CPLT V15,
GENMAC BELLATRIX



AIR COMPRESSORS
T75-7, T110-7, T130-7, T175-7,
T190-7, T190-12



DEWATERING PUMPS
6NNT 6", 66I2T 6"



GENERATORS
5kVA - 1700kVA



ROCK BREAKERS
0.5-2 t - 45 t



TRENCH / DOUBLE DRUM ROLLERS
765 kg - 1675 kg



TAMPERS
62 kg - 99 kg



PLATE COMPACTORS
53 kg - 800 kg



CONCRETE PLACEMENT
CT 36, CT 48, CRT 36,
CRT 48PS, CRT 60X



DEMOLITION ROBOTS



CAPABILITY STATEMENT

TRANSPORT DIVISION

Our Transport Division has the freight and logistics capabilities to convey your equipment safely and efficiently to any job site in Australia, no matter how remote.

RESOURCES AND CAPABILITIES

Our fleet of late model prime movers and low loaders are able to carry loads up to 85 tonnes in Western states and up to 67 tonnes in the Eastern states.

PRIME MOVERS



LOW LOADERS



DOLLY TRAILERS



TILT TRAYS



CAPABILITY TO DELIVER

- Over 40 years of experience in mining and construction equipment transport.
- We have the freight and logistics capabilities to convey your equipment safely and efficiently to any job site in Australia.
- Our fleet of late model prime movers and low loaders are able to carry loads up to 85 tonnes.
- We also offer tipper trucks, side tippers, freight trucks, tilt trays, trailers and dolly trailers for hire.
- Our team of experienced transport coordinators and drivers will work with you to offer transport solutions for any heavy haulage job.



CAPABILITY STATEMENT

AIRWAYS DIVISION

Our Airways Division is specialising in private charter flights to individuals, and fly in fly out (FIFO) flights to the mining, oil and gas, and resources industries. Our Medevac division is an Australian based provider of medical repatriation flights which include a complete bed-to-bed service.

RESOURCES AND CAPABILITIES



INTERNATIONAL ASSISTANCE GROUP



Our Airways Division operates a fleet of 7 dedicated B200 King Air turboprop and 6 Learjet 35A jet aircrafts in support of private & commercial



B200 KING AIR
7 King Air aircrafts in the fleet

Aircrew - 1 or 2 Pilots
Number of Passengers - up to 11
Range up to - 1,480 nm (2,740 km)
Max. Altitude - 25,000 ft
Cabin - Pressurised & Air-conditioned
Baggage Capacity - Medium
Cruising Speed - 250 knots (480 km/hr)
Engine Type - Twin Turbo Prop



LEARJET 35A
6 Aircrafts in the fleet

Aircrew - 2 Pilots
Number of Passengers - 6
Range up to - 4,500 km
Max. Altitude - 41,000 ft
Cabin - Pressurised & Air-conditioned
Baggage Capacity - Medium
Cruising Speed - 451 knots (840 km/hr)
Engine Type - Twin Jet

PRIVATE AIR CHARTERS



Save time - no check in, no luggage queues
Versatile - your schedule, your location, your time
First Class Facilities - fully-equipped departure lounge and private parking
Safe and Clean

MINING INDUSTRY FLIGHTS



FIFO & Executive flights - from Perth to any location in Australia.
Versatile - one off or regular contracts available
First Class Facilities - private departure lounge
Remote Airstrip Capability - locations inaccessible to commercial airlines

MEDICAL AIR AMBULANCE



Emergency Med-Evac - anywhere in the world.
Full ICU Capabilities - CASA approved aircraft, trained doctors, registered flight nurses on call.
Scheduled Patient Transfers - for less urgent cases.
Accredited Service Provider - 24/7 aeromedical standby contracts for remote companies in the mining, oil and gas industries.

AIR FREIGHT CHARTERS



Urgent Freight Transfers - national & International
Dangerous Goods - Qualified to safely transfer dangerous goods.
Industry Specific - oil, gas and resources sectors.
Remote Airstrip Capability - locations inaccessible to commercial airlines

CAPABILITY TO DELIVER

- Over 21 years of experience in private charter flights to individuals, & fly in fly out (FIFO) flights to the mining, oil & gas, & resources industries.
- We have the flight capability to charter flights anywhere in Australia as well as internationally with remote airstrip capability.
- Our dedicated Perth-based FBO is conveniently located next to the Perth Airport regional car park and features a fully-equipped private lounge.
- Our Airways Division has the diversity & flexibility to take care of all of your charter needs (FIFO, a one-off charter, cargo, or dangerous goods transport)
- We also have a dedicated medical evacuation (medEvac) division. Medical Air Ambulance has a skilled team of highly trained professional pilots & doctors on standby, offering a complete bed to bed transfer service from anywhere in the world.



CAPABILITY STATEMENT

OUR LOCATIONS

Hire, Access & Transport

Head Office
30 Coulson Way
Canning Vale WA 6155

Equipment Sales

Head Office
39 - 47 Murray Road N
Welshpool WA 6106

Site Services & Fleet

25 Glassford Road
Kewdale WA 6105

Airways & Medical Air

1 Barons Way
Jandakot WA 6164
38 Newton Road
Perth Airport WA 6164

Bunbury

3 Richter Road
Davenport WA 6230

Albany

140 Chester Pass Road
Lange WA 6330

Karratha

Lot 1 Coolawanyah Road
Karratha Ind. Estate WA 6714

Geraldton

67-37 Flores Road
Webborton WA 6530

Kalgoorlie

2-4 Williams Street
West Kalgoorlie WA 6430

Broome

2 Clementson Street
Minyirr WA 6725

Newman

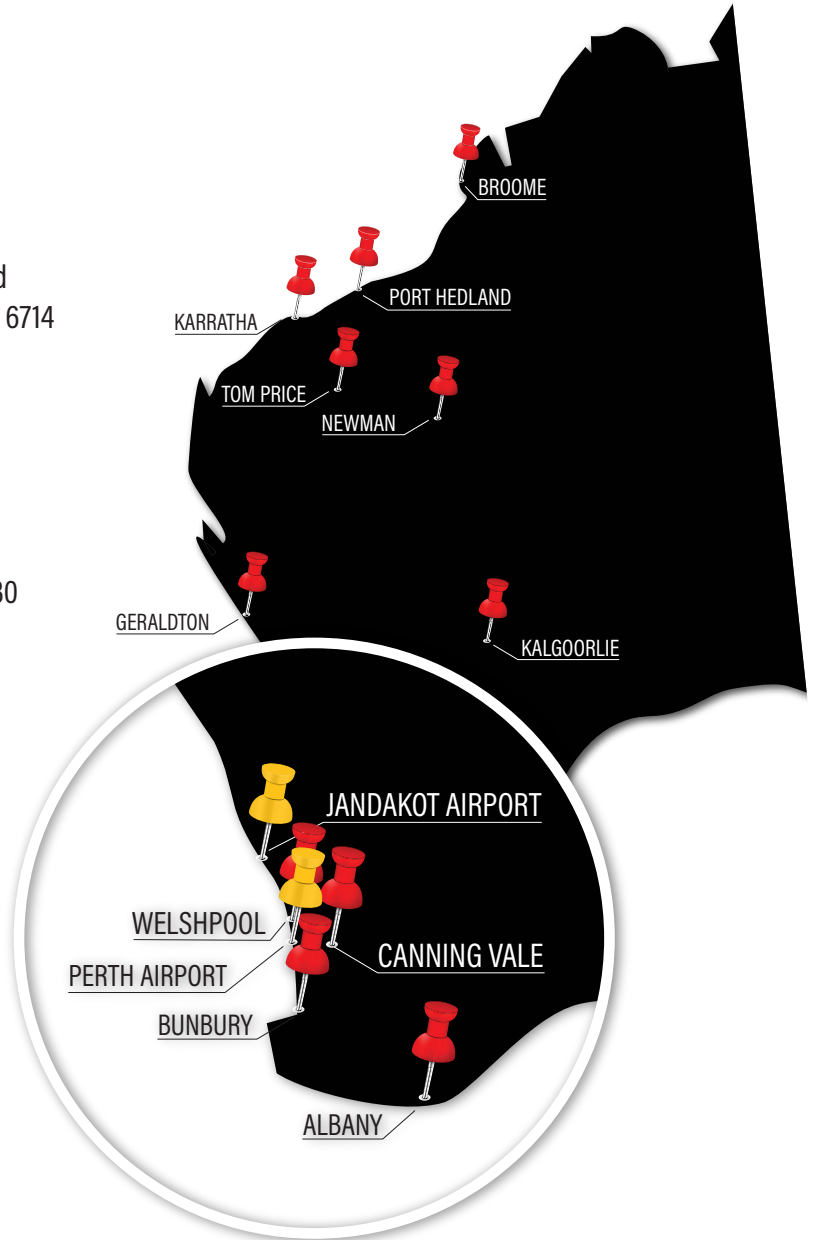
2 Bangkerbang Close
Newman WA 6753

Tom Price

43 Boonderoo Road
Tom Price WA 6751

Port Hedland

1 Manganese Street
Wedgefield WA 6721



CONTACT US

1300 BROOKS (276 657)

info@brooksobrmaia.com.au

brookshire.com.au/brooks-obr-maia

Lenore Brooks

Chief Business Officer
Brooks Group
lbrooks@brookshire.com.au

Simon Shin

CEO
Olive Branch Resources
simon.shin@obenterprise.com.au

