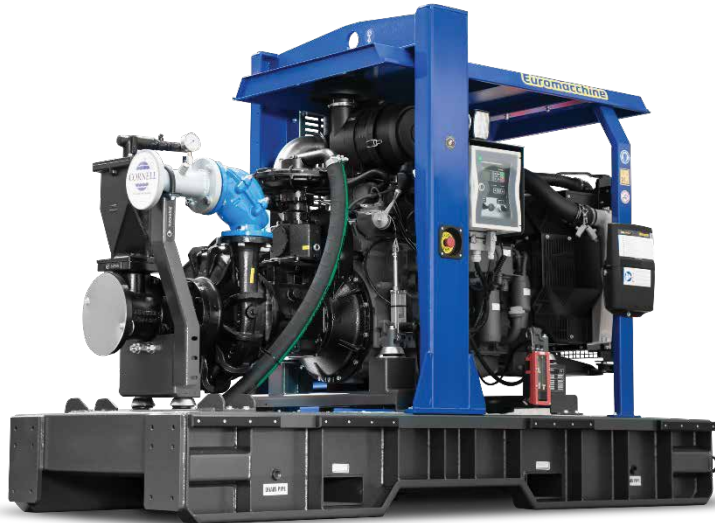


EFD.80N2X

FLOW @BEP: 40l/s - 145 m³/h

HEAD @BEP: 200m

DATASHEET SPECIFICATION



FLOW @BEP
20 l/s - 145 m³/h



HEAD @BEP
200 m



CORNELL PUMP
3419MX-RP-EM18DB



CUMMINS DIESEL ENGINE
C7.1



SOLIDS DIAMETER
0.75" – 19 mm



PRIMING SYSTEM
Redi Prime

EUROMACCHINA WATER TRANSFER APPLICATIONS

Water pumping is our natural environment. For this reason, we've been addressing always new pumping problems, delivering functional solutions which provide practical answers to any kind of pumping needs. Floods and emergencies, water transfer and slurry pumping. Our comprehensive range of high performance pump units are designed to be easy to use, prolong lifespan and reduce downtime & operational costs.

FEATURES & BENEFITS

- More than 50 countries covered by our support Team
- More than 12 languages spoken by our Team
- More than 15,000 codes available on stock
- 8 Assembly lines – Lean Manufacturing
- More than 40 years of experience
- Custom build available
- Testing Facility in internal control room

WATER TRANSFER SOLIDS HANDLING PUMPS

The 3419MX pump is designed with Cornell's renowned quality and durability. It features a 3" discharge, 4" suction, and enclosed impeller. Cornell's patented Cycloseal® design is standard, with a Type 2 single mechanical seal with Buna-N elastomers, stainless steel hardware and tungsten carbide vs. silicon carbide seal faces for abrasion resistance.

ALL HYBRID MX PUMP INCLUDES

- Impeller wear ring optionally hardened to 375-425 bhn
- Volute wear ring optionally hardened to 450-500 bhn
- 3 or 4 vane enclosed CA6NM impellers
- Heavy Duty Bearing Frame
- Double angular contact thrust bearings CA6NM Impeller is corrosion-resistant and abrasion-resistant
- Industry-leading efficiencies
- Two year Warranty



TIME SAVING

EFFICIENCY

- Less fuel consumption
- Oversized shaft & bearings
- Easily replaceable wear parts



RELIABILITY

LESS WEAR

- Less Maintenance
- Less Parts
- Less Downtime



CUSTOMIZATION

MADE ON YOUR NEEDS

- Customized solutions
- Taylor made products
- MADE IN ITALY



1300 BROOKS (276 657)
@ sales@brookshire.com.au
www.brookshire.com.au

BROOKS HIRE

"Better Being With Brooks"

EFD.80N2X

FLOW @BEP: 40l/s - 145 m³/h

HEAD @BEP: 200m

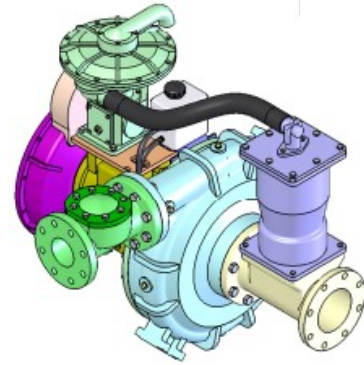
STANDARD TECHNICAL SPECIFICATION

CORNELL PUMP:

3419MX



PUMP		
Brand	CORNELL PUMP	
Model	3419MX	
Version	Engine Mounted	
Suction size	100 mm	4"
Delivery size	75 mm	3"
Solid handling	19 mm	0.75"
Impeller	498 mm	19,59"
Min Flow	36 m ³ /h	160 GPM
MAX Flow	195 m ³ /h	860 GPM
MAX Head	210 m	700 ft
MAX Speed	2.200 Rpm	
BEP Point	145 m ³ /h @ 200 m - 55%	
Shaft	2,5"	63,5 mm
Shaft Seal	Mechanical	
Pump Weight	1271 Lb	571 kg



MATERIALS	STANDARD
Volute	DUCTILE IRON
Impeller	CA6NM – CD4MCu (Opt.)
Wear ring	Cast iron
Shaft	17-4PH STAINLESS STEEL
Shaft sleeve	416 STAINLESS STEEL
Suction Cover	Cast iron
Mechanical seal	Tungsten Carbide vs. Silicon Carbide
Bearing frame	Cast iron

DIESEL ENGINE

Brand	CAT
Model	C7.1
Power	205 kW / 275 HP @2,200 Rpm
Aspiration	TURBOCHARGED
Emission	Stage IIIA
Displacement	7,01 L
Cylinders	6 in line
Cooling system	Liquid
SAE – Fly Wheel	#1 – 14"
Torque	-

FUEL SYSTEM

Tank Type	Bunded – Double wall
Tank Capacity:	500 liters
Fuel Tank Cap:	2 x Ø80 mm – 3"

CONTROL PANEL

Brand	ComAp
Model:	IPC / Inteligen 500
Control:	Pump – Engine
Remote Control:	YES – GPS Location (with Inteligen 500)

PRIMING SYSTEM	
Brand	CORNELL PUMP
Model	REDI – PRIME
Air Handling	50 m ³ /h
MAX Vacuum	8,5 m
Drive	Toothed belt – Continuous drive
Delivery	Non return valve



1300 BROOKS (276 657)
@ sales@brookshire.com.au
www.brookshire.com.au

BROOKS HIRE

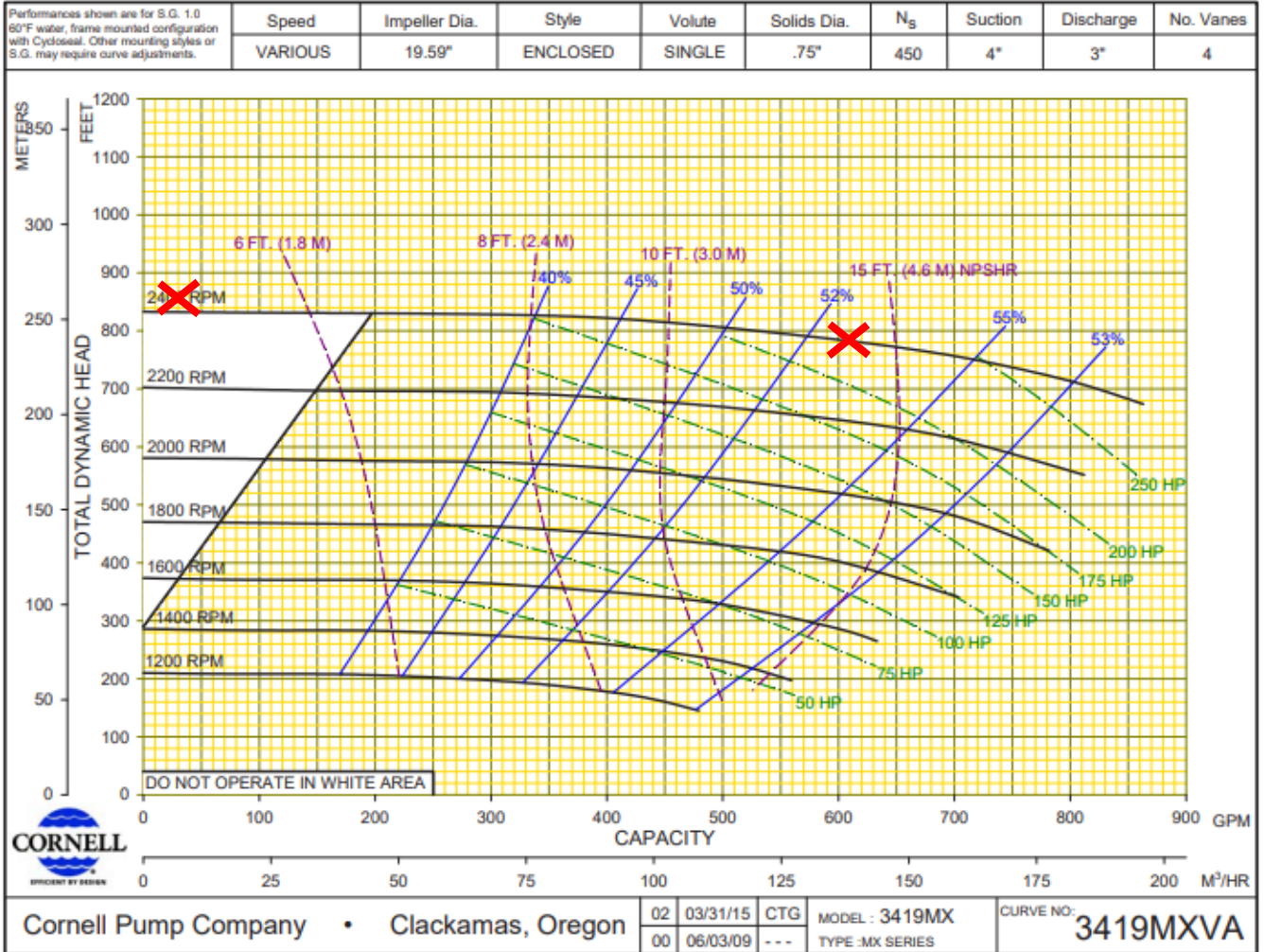
“Better Being With Brooks”

EFD.80N2X

FLOW @BEP: 40l/s - 145 m³/h

HEAD @BEP: 200m

PUMP CURVE SELECTION



STANDARD & BENEFITS

Canopy: SS SUPERSILENT – Optional
 Doors: 7 Lockable Doors on SS version
 Roof: REMOVABLE – Complete Top Access on SS version
 Basic Frame: Available
 Frame: Double Wall Tank
 Tank: Metal tank – 500 liters
 Autonomy: 24 Hours
 Exhaust system: Internal in SS Version
 Forklift Pockets: Fitted with 2 Forklift pockets
 Lifting Point: Central Balanced

Voltage: Nominal 24V
 Battery: 2x105 Ah – Premium Quality
 Electrical Isolation: Battery Isolator Switch
 Oil Indicator: Murphy MPC-10
 Filter: Fuel/Water Filter Separator
 Fuel Tank Cap: 2 x Ø80 mm – 3"
 Fuel Level: Electronic Fuel Injection
 Fuel Connectors: In/Out external Diesel tank
 Fuel Valve: 3 Ways Valve
 Documentation: User Manual



1300 BROOKS (276 657)
 @ sales@brookshire.com.au
 www.brookshire.com.au

BROOKS HIRE

“Better Being With Brooks”

EFD.80N2X

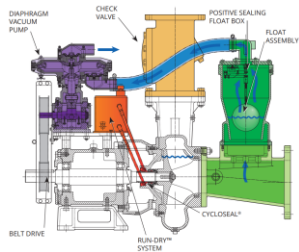
FLOW @BEP: 40l/s - 145 m³/h

HEAD @BEP: 200m

FEATURES & BENEFITS

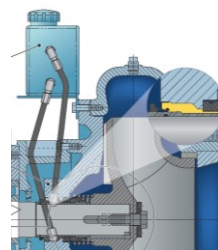
PRIMING SYSTEM REDI-PRIME:

Cornell Redi-Prime pumps are designed with oversized suctions to provide more flow, reduced friction losses, and higher suction lift. The priming system was designed with the environment in mind. By using a positive sealing float box and a diaphragm vacuum pump, there is no water carry-over to contaminate the environment.



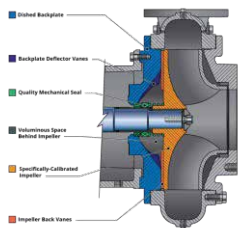
CORNELL RUN-DRY:

The Cornell Run Dry system is an inventive solution to provide continual lubrication of mechanical seals. Run-Dry provides a gland on the backside of the mechanical seal through which a lubricant can circulate providing lubrication and cooling to the hardened seal faces of the mechanical seal. The result is exceptional seal life regardless of operating conditions, from maximum flow to no flow – Run-Dry.

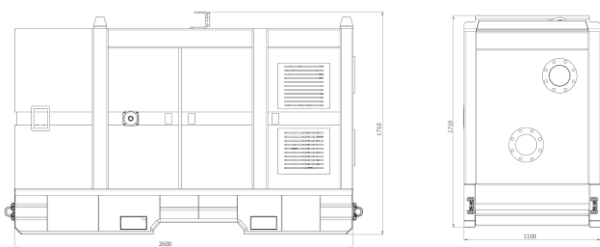


PROTECTION SYSTEM CYCLOSEAL:

Cycloseal® is patented system with a self-contained single mechanical seal. The Cycloseal pattern cast into the pump backplate in conjunction with contoured impeller back vanes and a dished backplate, creates a pressure gradient that move solids and entrained vapor away from the seal faces.



DIMENSIONS & WEIGHT



DIMENSIONS & WEIGHT

L x W x H	mm	3,500x1,500x2,500	
	inches	138.00 x 60,00 x 99,00	
Dry Weight		3,000 kg	6.600 lb



☎ 1300 BROOKS (276 657)
 @ sales@brookshire.com.au
 🌐 www.brookshire.com.au

BROOKS HIRE

“Better Being With Brooks”