

# QUEEN G100PS

50Hz@1500RPM 400/230V 3PH - BROOKS MINING SPEC

**GENMAC**  
POWER PRODUCTS

Perkins STAMFORD



Picture for illustration purposes only

## Overall performance

### G100PS

PRP Continuous power kVA	100
PRP Continuous power kW	80
LTP Stand-by power kVA	110
LTP stand-by power kW	88
Power factor cos $\phi$	0.8
Voltage VAC	400/230
Frequency Hz	50
Ampere PRP/LTP	145 / 159
Speed RPM	1500

## Dimensions and noise level

Length mm	2950
Width mm	1056
Height mm	1900
Net Weight kg	1617
Gross Weight kg	1641
Sound pressure at 7 mt dBA	-

## Data reference

Standard reference conditions temperature 25°C, altitude 1-1000m asl, relative humidity 30%, atmospheric pressure 100 kPa (1 bar), power factor 0.8 lag, balanced load - non distortional. Fuel consumption is nominal and refers to specific weight 0.850 gr/lt. Power performance data as quoted can be obtained after the initial running-in period of the engine, during which one has to follow the instructions of the engine manufacturer as stated in the use and maintenance manual of the specific engine. The tolerance shown by the engine manufacturer is +/- 5%. Sound power values refer to free field conditions: the installation site may influence the values. Dimensions, weights and other specifications contained in the technical data sheet and related attachments are nominal, subject to tolerances and refer to the model with standard equipment; any optional and additional equipment/accessories can modify weight, dimensions, performance.P.R.P. Prime Power-Continuous power at variable load: The power that a genset can supply in continuous service at a variable load for an unlimited number of hours per year while respecting the maintenance intervals established in the environmental conditions stated by the Manufacturer. according to ISO8528-1. The average power supplied over time and any applicable overload must be less than the percentages stated by the Manufacturer.L.T.P. Limited-time running power-Limited power: The maximum power that a genset can supply for a limited time respecting the maintenance intervals established in the environmental conditions stated by the Manufacturer according to ISO 8528-1.The number of hours per year is stated by the Manufacturer. Overload is not permitted.\*For reasons of transport and/or storage, liquids (oil and antifreeze) and batteries might not be included in the delivery.

## General features

Silent generator with following specifications:

### Frame:

- Heavy duty fabricated welded base plate with high quality steel UNI S235 JR
- Heavy duty, bell type, rubber anti-vibration mountings
- Dedicated area to make easier the electrical connection to the load
- Fuel tank with drain plug and retention basin
- Feet and four lifting holes on the base

### Canopy:

- Large doors for easy access for service and maintenance
- Electro-galvanized sheet DC01+ZE25/25 (EN 10152: 2009)
- High precision sheet cutting with nitrogen laser technology to avoid oxidation
- Sandblasting and cataphoresis treatment of intake / exhaust grids
- Weatherproof sealed joints
- Lockable handles in each door
- Grey RAL 7035 "orange peel" specific powder coat paint for outdoor usage
- Rain cap on exhaust outlet
- Coolant refilling specific hatch
- Fuel filler outside enclosure
- Ecological Sound foam: 100% Recyclable, 40mm thickness, fire-proof self-extinguishing class1 fire-reaction compliant washable, mechanically fixed to the frame

### Muffler:

- Supersilent, Residential type, integrated in the canopy
- With aluminum coating

### Control Panel:

- Self-standing control panel tower made with metal structure and components to grant IP65 protection, easily removable for maintenance
- Easy access to control panel through a canopy's door, equipped with lexan window
- Control panel is divided in two independent and insulated boxes separating Controls (Controller and numbered terminal board) from Power connection (circuit breaker and cable inlet)
- External dedicated area to make easier the electrical connection to the load
- Power connection between circuit breaker and alternator made with high resistance neoprene cables (H07RNF) and using cable glands for waterproof connections

All units and components are prototype tested, factory build and production tested. A specific control procedure during the several stages of production ensures long life and reliability.

# QUEEN G100PS

50Hz@1500RPM 400/230V 3PH - BROOKS MINING SPEC

**GENMAC**  
POWER PRODUCTS

## Engine general data

Engine brand	Perkins
Model	1104C-44TAG2
PRP Power kW	89.00
LTP Power kW	97.90
Fuel	Diesel
Nr. cylinders	4
Air intake	Turbocharged
Cooling	Water
Cubic capacity l.	4.40
Speed regulation	Electronic
Performance Class - steady state regulator accuracy +/- %	G3 - 0.50
Load Step G1 - KWe	-
Load Step G2 - KWe	-
Load Step G3 - KWe	-
Voltage VDC	12
Emissions	-

## Alternator general data

Alternator brand	Stamford
Model	UCI274C
Type of excitation	Self-excited
Type of regulation	AVR
Regulator precision +/- %	1.00

## Structure data

Type of structure	QUEEN
Tank capacity l.	270
Retention basin	yes
Exhaust diameter mm	120

## Control panel features

### QT2R-4510

Self-standing tower with IP65 metal box  
Circuit breaker  
Manual controller DSE4510  
- Voltmeter, Frequncymeter, Ammeter  
- Generator power (kW, kV Ar, kV A & pf) monitoring  
- Hour meter  
- Fuel level meter  
- Overload (kW & kV Ar) protection  
- Low oil pressure protection  
- High coolant temperature protection  
- Low fuel level protection  
- Battery charger alternator fault  
- Rpm protection  
Emergency stop button  
Audible alarm  
Terminal board for ATS connection  
Can Bus reading Port (if standard on the engine)  
Battery charger  
On/off switch

## Fuel consumption

Consumption 25% l./h	0.00
Consumption 50% l./h	11.80
Consumption 75% l./h	17.10
Consumption 100% l./h	22.60
Autonomy at 75% of load h.	≈ 16 h

## Engine liquids and equipment

Type of lubricant	Oil SAE 15W40
Lubrication capacity l.*	8.00
Type of coolant	Antifreeze liquid
Coolant capacity l.*	12.60
Air intake filter	Paper cartridge
Battery capacity Ah	70
Number of batteries*	1

## Fuel system and energy balance

AC pump suction head kPa	2
Combustion air flow volume LTP m3/min	6.27
Cooling air capacity LTP m3/min	165.60
Exhaust gas flow-density LTP m3/min	16.30
Exhaust gas temperature LTP °C	543.00
Brake mean effective pressure kPa	15.00
Energy to exhaust LTP kWt	78.90
Energy to coolant LTP kWt	61.60
Energy to radiation LTP kWt	7.50



Dealer

# QUEEN G100PS

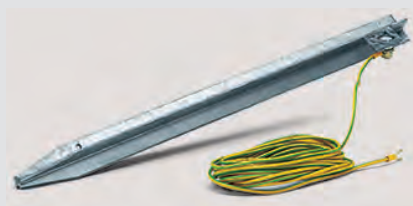
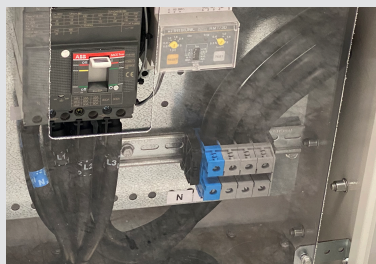
50Hz@1500RPM 400/230V 3PH - BROOKS MINING SPEC

**GENMAC**  
POWER PRODUCTS

## Standard Composition:

**Control Panel:** Frontal Socket kit: 3 x 15amp AUS/NZ, No. 2 x CEE 32A 415V 1x CEE 63A 415V  
Analogic fuel level gauge  
Self-standing internal tower panel IP65 inside canopy  
Deep sea controller DSE4510 and electronic battery charger  
Terminal board for easy direct connection  
Adjustable Earth Fault Breaker (RCD)

**Structure:** 270L integrated Bunded tank + containment up to 110% of total liquids Fuel tank cap with lock  
Central lifting hook  
Bilateral forklift pockets (to be dismantled in case you add skid base)  
Galvanized steel canopy with powder coated paint  
Exhaust manifold insulation jacket  
Lockable battery switch  
3 way valve  
Quick coupling (1/4") for external tank  
Quick coupling for oil discharge  
Ground rod  
Doors earthing





# QUEEN G100PS

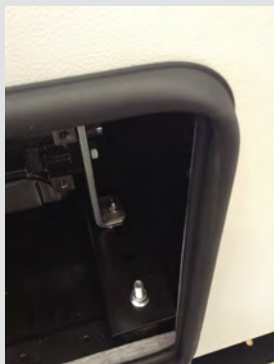
50Hz@1500RPM 400/230V 3PH - BROOKS MINING SPEC

**GENMAC**  
POWER PRODUCTS

## Structure Details:



100% recyclable, Class 1, fireproof foam, mechanically fixed - no glue.



Automotive gaskets seal doors



Bunded tank 110%



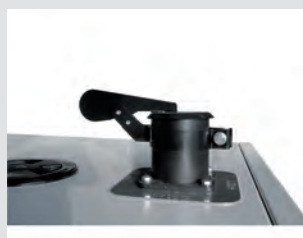
Coolant Drain tap



Modular canopy



Drain plug



Rain cap



External Emergency Stop Button

## Optional:

Electronic Governor

Cyclon Air Prefilter

Skid base

