



# Built Tough

## HIGH HEAD BR

### HEAVY DUTY

Automatic self-priming single stage end suction pump

### SOLIDS HANDLING

Large solids capacity while maintaining hydraulic efficiencies

### CORROSION RESISTANT

Stainless steel 316 (CF8M) internals as standard.



1300 BROOKS (276 657)  
@ sales@brookshire.com.au  
www.brookshire.com.au

# **BROOKS HIRE**

*“Better Being With Brooks”*

**DESIGN DETAILS**

Auto self priming, centrifugal single stage, end suction, 4 vane semi open impeller

Suction Flange	75mm / 3"
Delivery Flange	75mm / 3"
Solids Handling	77mm / 3.03"
Maximum Head	105m / 344ft
Maximum Flow	29.7L/sec / 471 USgal/min
Engine Type	Perkins 404D-22
Engine Adaptor	SAE #4
Shaft Diameter	40mm / 1.57"
Fuel Rate @ BEP 2,000rpm	6.9L/hr / 0.03 USgal/min *
Fuel Rate @ BEP 1,600rpm	3.4L/hr / 0.02 USgal/min *
Fuel Tank Capacity	80L / 21 USgal

**MATERIALS OF CONSTRUCTION**

STANDARDS	MATERIAL	AUSTRALIA		AMERICAS	
		GRADE	AS	GRADE	ASTM
Tee Piece	SG Iron	400/12	1831	65-45-12	A536
Pump Casing (Volute)	SG Iron	400/12	1831	65-45-12	A536
Front Wear Plate	Stainless	316/H6B	2074	CF8M	A351
Impeller	Stainless	316/H6B	2074	CF8M	A351
Rear Wear Plate	Stainless	316/H6B	2074	CF8M	A351
Pump Shaft	Stainless	431	2074	98b-431	A276
Bearing Bracket	SG Iron	400/12	1831	65-45-12	A536
Bearing Covers	SG Iron	400/12	1831	65-45-12	A536
Mechanical Seal	Multi spring balanced mechanical seal assembly with silicon carbide/silicon carbide mechanical seal faces in self-contained oil reservoir.				

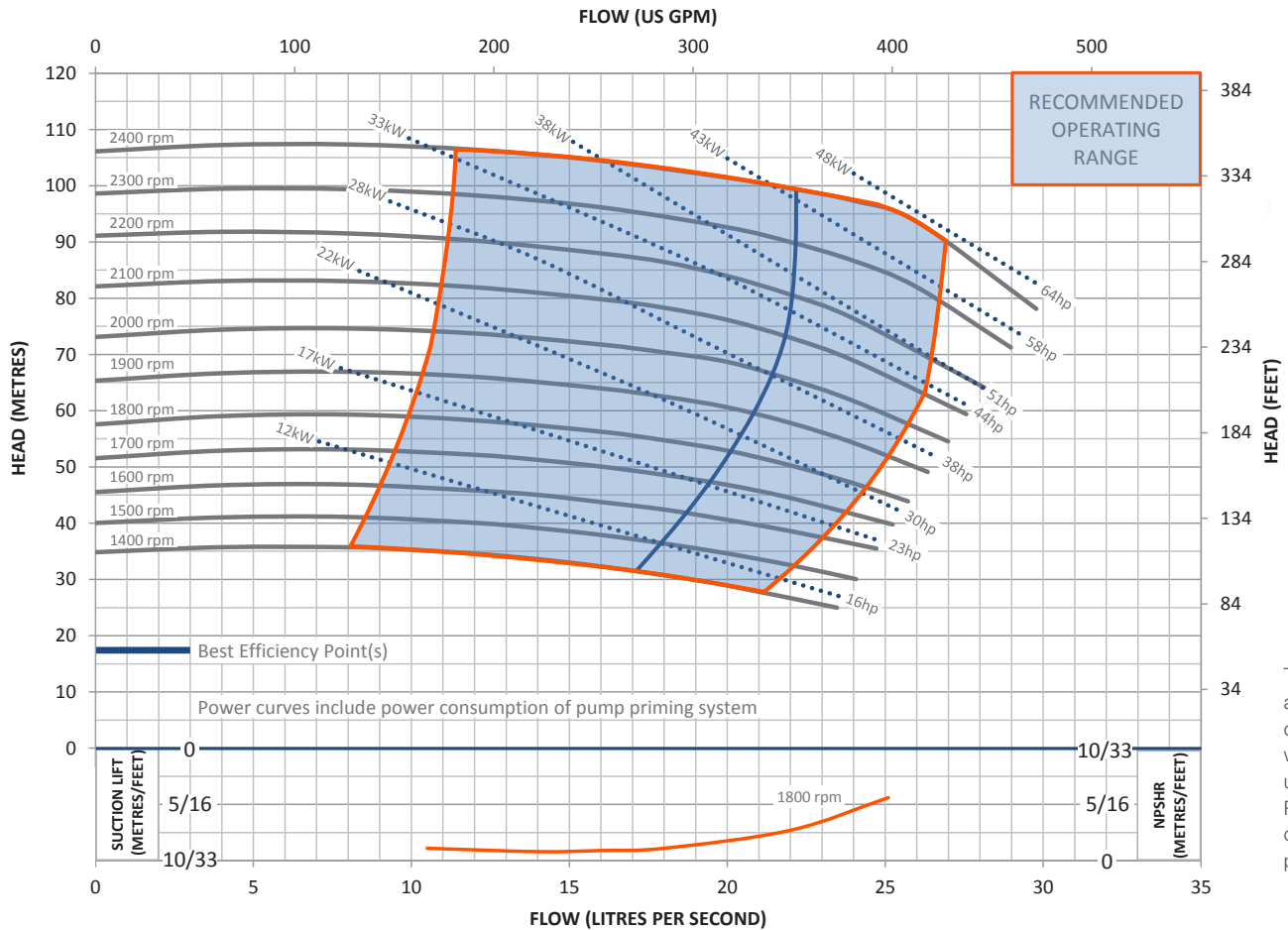
**BASIC RANGE (BR) INCLUSIONS**

- Galvanised, folded steel base, complete with fork tyne pockets and a single point lifting frame.
- Manual diesel fuel fill (lockable).
- Pump and engine control panel with emergency stop as standard.
- Heavy duty battery.

**OPTIONAL EXTRAS**

Please contact us to discuss these options:

- Additional operational, mobility and safety extras such as: suction and discharge couplings, strainers, battery isolators, sleds and trailers. These can all be selected and fitted to our Basic Range (BR) pump units.
- Our BR build configuration uses Perkins diesel engines, however, alternative engine brands are available upon request.
- Other pump materials of construction are also available upon request: full 316 stainless steel, CD4MCU, chromium steel, SAF 2205 and SAF 2507.



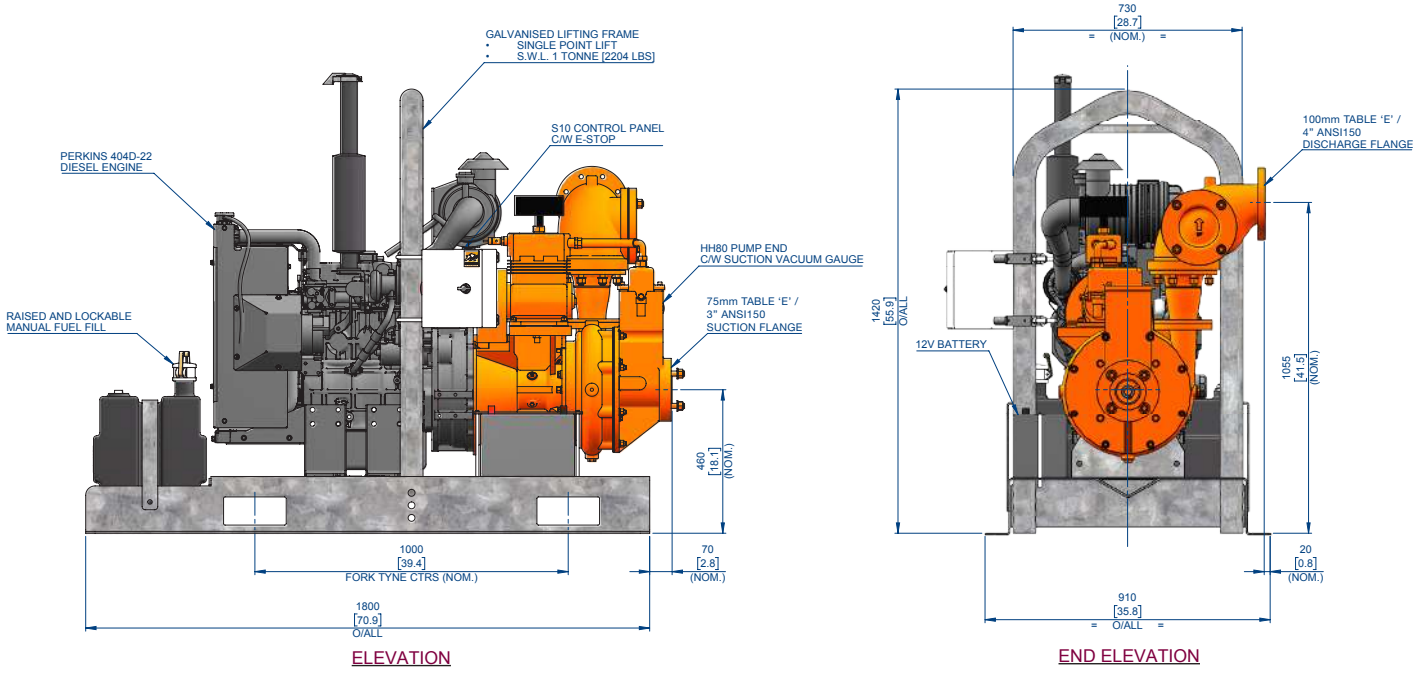
This pump and engine combination will produce up to 1,800 RPM of non-overload pump performance.



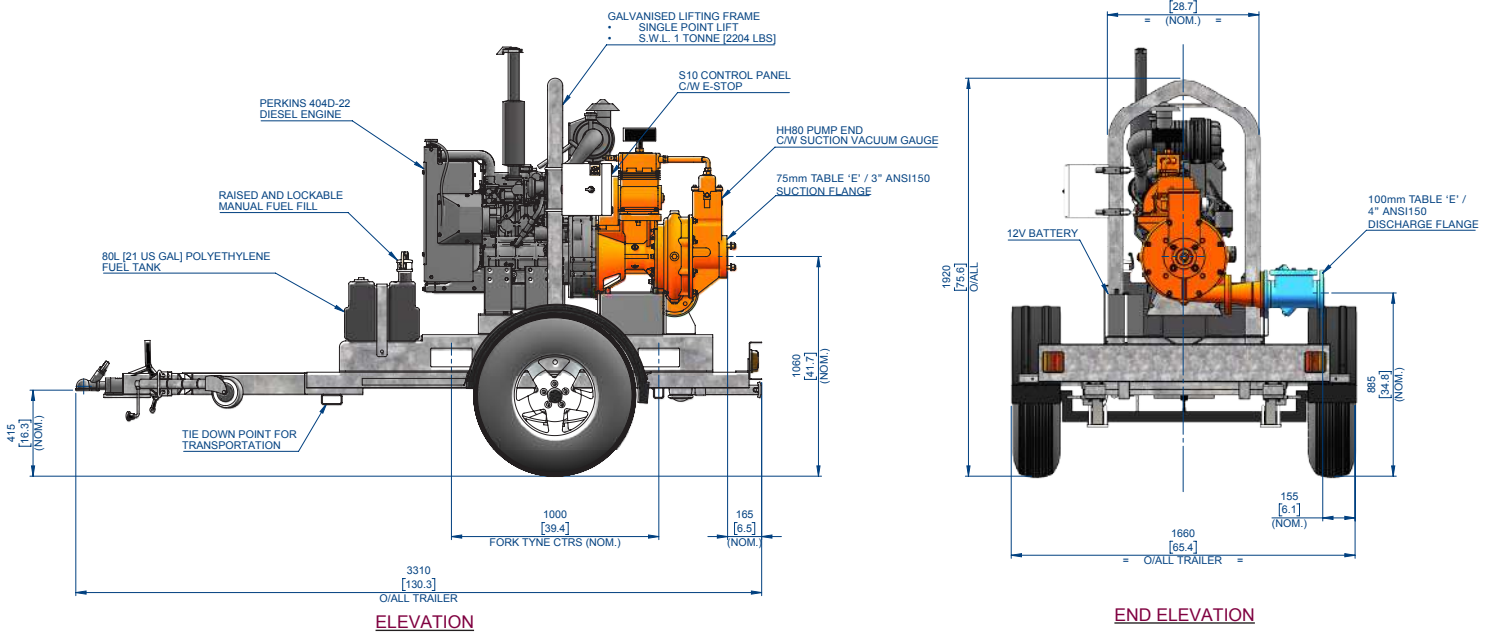
1300 BROOKS (276 657)  
 @ sales@brookshire.com.au  
 www.brookshire.com.au

**BROOKS HIRE**

*"Better Being With Brooks"*



<b>DRY:</b> 661 kg (1,455 lb)	<b>WET:</b> 735 kg (1,620 lb)
-------------------------------	-------------------------------



<b>DRY:</b> 905 kg (2,000 lb)	<b>WET:</b> 970 kg (2,000 lb)
-------------------------------	-------------------------------



1300 BROOKS (276 657)  
 @ sales@brookshire.com.au  
 www.brookshire.com.au

**BROOKS HIRE**

*"Better Being With Brooks"*