

LIMITLESS PERFORMANCE



MADE FOR AUSTRALIAN CONDITIONS



MINING EXCAVATOR

XE1350

Product Specifications

OPERATING WEIGHT

121,000 kg

RATED POWER

567 kW/1800 RPM

BUCKET CAPACITY

6m³ - 7m³

ENGINE

Cummins QSK23

Built for tough Aussie conditions.



PRODUCT HIGHLIGHTS

- Original Cummins engine ensures strong power output during high-load operation, achieving high-efficiency.
- High-quality hydraulic system and hydraulic components adopt an advanced and reliable positive flow control system, providing stronger excavation capabilities.
- Advanced exhaust dust extraction technology, automatically removes dust from the air filter, extending the service life of the filter element and reducing user costs.
- Reinforced working devices, including the boom, bucket arm, and bucket, are made of high-quality and high-strength plates. The structure is optimised and analysed, built with advanced welding technology and welding equipment to ensure absolute strength.

MACHINE WALKAROUND

ENGINE

Engine emergency stop (1 inside of cab, 2 outside)
 Fuel filling pump
 High flow quick fill-fuel
 Isolator (start motor) yellow
 Pre-air-cleaner (cyclone style)
 Dust-proof net
 Engine oil drain coupler
 Expansion tank
 Fuel cooler
 Fuel pre-filter with water separator
 Radiator, oil cooler and intercooler
 Engine turbo-timing function

HYDRAULIC SYSTEM

One way breaker hammer pipe
 Boom and arm anti-drop valve
 Auto power lift (power boost)
 Drain filter (return hydraulic filter)
 Pilot filter
 Suction filter
 Working mode selection for attachments
 Remote jump starter

ELECTRIC SYSTEM

360° camera
 Light alarm beacon lamp
 Travel alarm
 Isolator (battery) (red)
 UHF radio (local option)
 24V power source (main machine)

WORKING DEVICE

Heavy duty rock bucket 6m³
 Rock bucket 7m³
 Hydraulic auto-grease system

CABIN

ISO seat bolt (two point)
 Air suspension seat
 Heater and A/C
 Sunroof and front curtain
 Quality reflective tinted glass (except windscreen)
 Reinforced, tinted green glass windows
 FOPs Certification and Nameplate
 Cabin top guard
 Cabin front guard (half/full)
 Electric horn
 Escape hammer
 Front window washer (2 points)
 Glove compartment
 Hands-free calling device (Bluetooth)
 Pilot shut-off lever/ safety lever
 Windows on left side can be opened
 Wide view wiper
 2 speakers
 6 fluid-filled elastic mounts
 Cabin pressuriser with filter

UNDERCARRIAGE

Bolt-on sprocket
 Full track guard
 Track (700mm double rib)
 Track undercover
 Travel direction mark on track frame
 Travel motor covers
 Travel parking brake
 Upper and lower rollers (double-flange lower rollers)
 4 tie down hooks

MONITORING SYSTEM

Alarms: overheat, engine warning, engine oil pressure, alternator, minimum fuel level, hydraulic filter restriction, air filter restriction, work mode
 Display of meters: water temperature, hour, fuel rate, clock
 Other displays: work mode, auto-idle, rear view monitor

UPPER STRUCTURES

Hand rail on top of upper frame (non-full protection type)
 Extinguisher
 Extinguisher racket (only cabin)
 Reflective tape
 Hydraulic oil level gauge/ sight glass
 Lockable fuel refilling cap / tank sight glass
 Platform handrail
 Sidewalk (cab side)
 Skid-resistant plates and handrails
 Swing parking brake
 Undercover
 Fire suppression (local option)



INNOVATION THAT'S OPERATION THAT'S BOUNDLESS



COMPREHENSIVELY OPTIMISED SYSTEMS

Hydraulic, engine, electrical and structural systems are fully optimised to enhance overall reliability and performance.

HIGH-STRENGTH INTEGRATED STRUCTURE

Integrated cast steel components and robotic welding ensure consistent weld quality and long-term structural stability.

REDUCED STRUCTURAL STRESS

Proprietary stress-relief technology lowers average structural stress by 12-15%, and by up to 32% on the bucket arm, extending service life.

REINFORCED UNDERCARRIAGE

150-tonne-class rollers, sprockets, idlers and tracks with enlarged axle diameters deliver a 30% improvement in bearing capacity.

HIGH-CLEARANCE X-TYPE CHASSIS

X-type chassis with standard H-frame and full track protection provides high strength, stability and excellent terrain passability.

HEAVY-DUTY SLEWING PLATFORM

Large double-box slewing mainframe increases load capacity by 30% for demanding applications.

HIGH-PERFORMANCE MINING ENGINE

Powerful mining engine offers strong output, low fuel consumption and a 500-hour planned maintenance interval.*

ADAPTIVE OPERATING MODES

Smart Mode automatically balances engine and hydraulic output achieving the best balance of productivity and fuel efficiency, while selectable Power Modes maximise productivity when required.

HEAVY-DUTY ROCK BUCKET

Standard 8m³ rock bucket delivers 5% higher digging force and 10% greater output for demanding excavation work.

LONG-LIFE BUCKET DESIGN

Optimised bucket profile with GPa-grade high-strength wear plates ensures extended service life in mining applications.

INTEGRATED HAULING COMPATIBILITY

Optimised to work seamlessly with XCMG 90-100 tonne mining trucks, significantly improving loading efficiency.

WIDE APPLICATION CAPABILITY

Multiple operating modes, bucket options and attachments enable use across a broad range of working conditions.

* When maintained in accordance with XCMG operating guidelines.

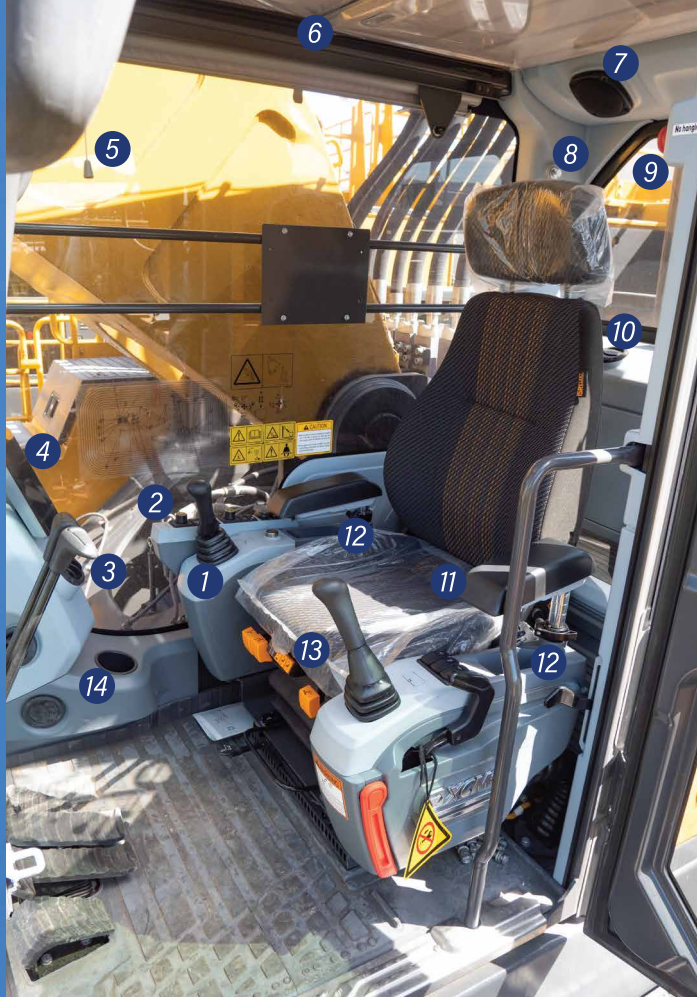


DESIGNED FOR THE OPERATOR

The premium cab features a modern layout with durable, soft-touch materials, an ergonomic suspension seat for reduced fatigue, and optional full-height panoramic glazing for excellent visibility.

An enhanced wiper system improves glass coverage by 80% for clearer views in poor conditions, while improved cab sealing reduces wind and engine noise. Automatic climate control maintains comfort year-round, and a clear, intuitive instrument display ensures all key operating information is visible at a glance.

- 1 Hydr. piloted joystick
- 2 Operator controls
- 3 Travel levers and pedals
- 4 Colour LCD monitor
- 5 Shade curtain
- 6 Roof skylight
- 7 Speakers
- 8 Coat hook
- 9 Emergency stop
- 10 All-around air vents
- 11 Adjustable arm support
- 12 Storage compartment
- 13 Adjustable seat
- 14 Cup holder
- 15 Start/ stop switch
- 16 DC12V/ 10A
- 17 Wiper washer fluid refill
- 18 Escape hammer



"A really friendly group of people with a huge range of equipment."

Alan Hall
Brooks Equipment Customer



ADVANCED SAFETY & CONVENIENT MAINTENANCE

DESIGNED TO PERFORM & BUILT TO LAST

360° SAFETY MONITORING

Optional 360-degree panoramic camera and operator safety management systems enhance site awareness.

HIGH-INTENSITY WORK LIGHTING

Multi-point matrix headlamp design expands illumination range for safer night-time operation.

SPACIOUS MAINTENANCE ACCESS

20% more service space with wide side walkways and central access fitted with safety doors.

LOW MAINTENANCE COSTS

Improved oil filler access and centralised filter replacement simplify routine servicing.

AUTOMATIC LUBRICATION SYSTEM

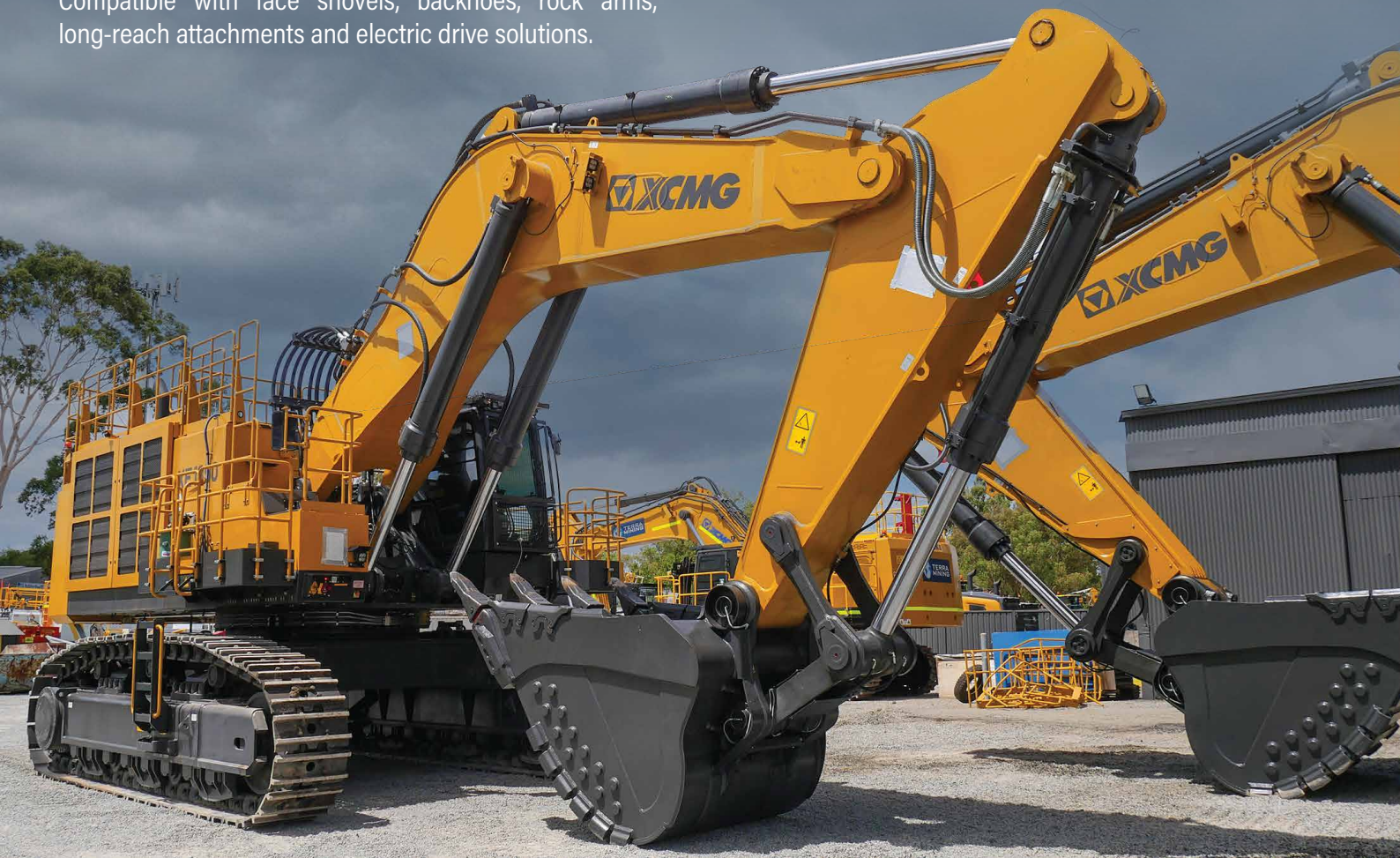
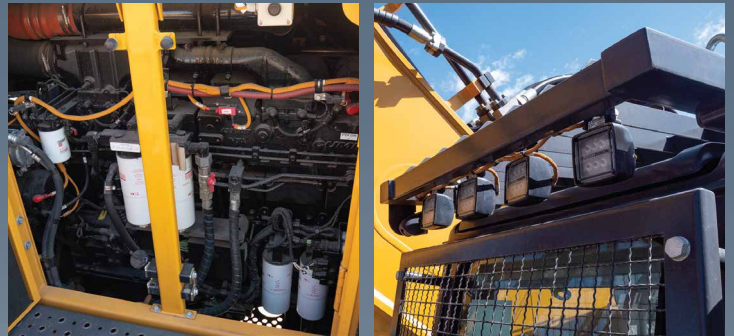
Standard single-line automatic lubrication system holds up to 27 kg of grease, reducing downtime.

EFFICIENT AIR FILTRATION

High-efficiency cyclone air filter protects the engine and lowers filter maintenance requirements.

VERSATILE ATTACHMENT OPTIONS

Compatible with face shovels, backhoes, rock arms, long-reach attachments and electric drive solutions.





XE1350

MINING EXCAVATOR

DIMENSIONS & SPECIFICATIONS



Scan to view the XE1350 product brochure

MAIN SPECIFICATIONS

ENGINE

Model	Cummins QSK23
Direct Injection	Yes
Four Strokes	Yes
Water Cooling	Yes
Turbo-charging	Yes
Air to Air Intercooler	Yes
No. of Cylinders	6
Output Power	567/1800 kW/rpm
Torque/Speed	3468/1350 Nm
Displacement	23.15 L

MAIN PERFORMANCE

Travel Speed (H/L)	3.5/2.4 km/h
Rotating Speed	5.2 r/min
Gradeability	35°
Ground Pressure	152 kPa
Bucket Digging Force	630 kN
Arm Crowd Force	520 kN
Maximum Traction	746 kN

HYDRAULIC SYSTEM

Rated Flow of Main Pump	3x531 L/min
Pressure of Prime Valve	34.3 MPa
Pressure of Travel System	34.3 MPa
Pressure of Swing System	28 MPa
Pressure of Pilot System	4.1 MPa

OIL CAPACITY

Fuel Tank Capacity	1460 L
Hydraulic Tank Capacity	640 L
Engine Oil Capacity	75 L

DIMENSIONS

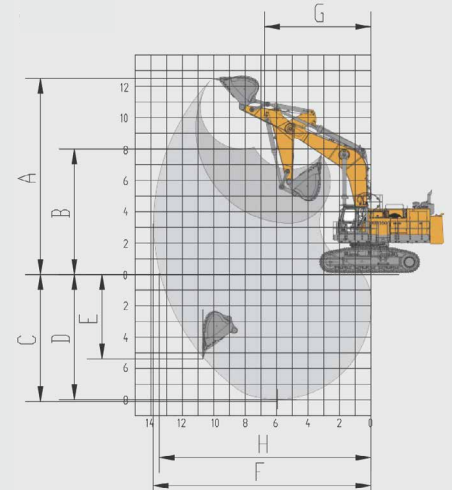
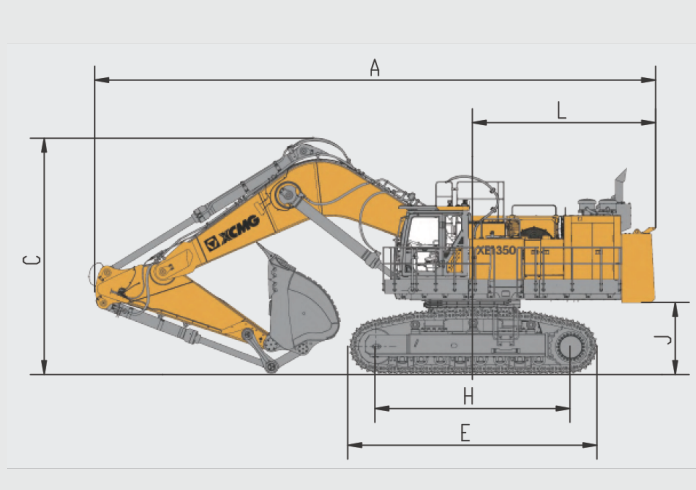
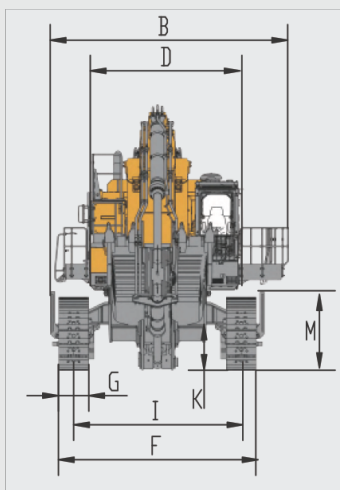
A Overall Length	14770 mm
B Overall Width	5540 mm
C Overall Height	6190 mm
D Width of Platform	3490 mm
E Length of Crawler	6500 mm
F Overall Width of Chassis	4980 mm
G Width of Crawler	700 mm
H Track Length on Ground	5090 mm
I Crawler Gauge	3900 mm
J Clearance Under Counterweight	1870 mm
K Min. Ground Clearance	1070 mm
L Min. Tail Swing Radius	4920 mm
M Height of Crawler	1710 mm
Operating Weight	121000 kg

WORKING SCOPE

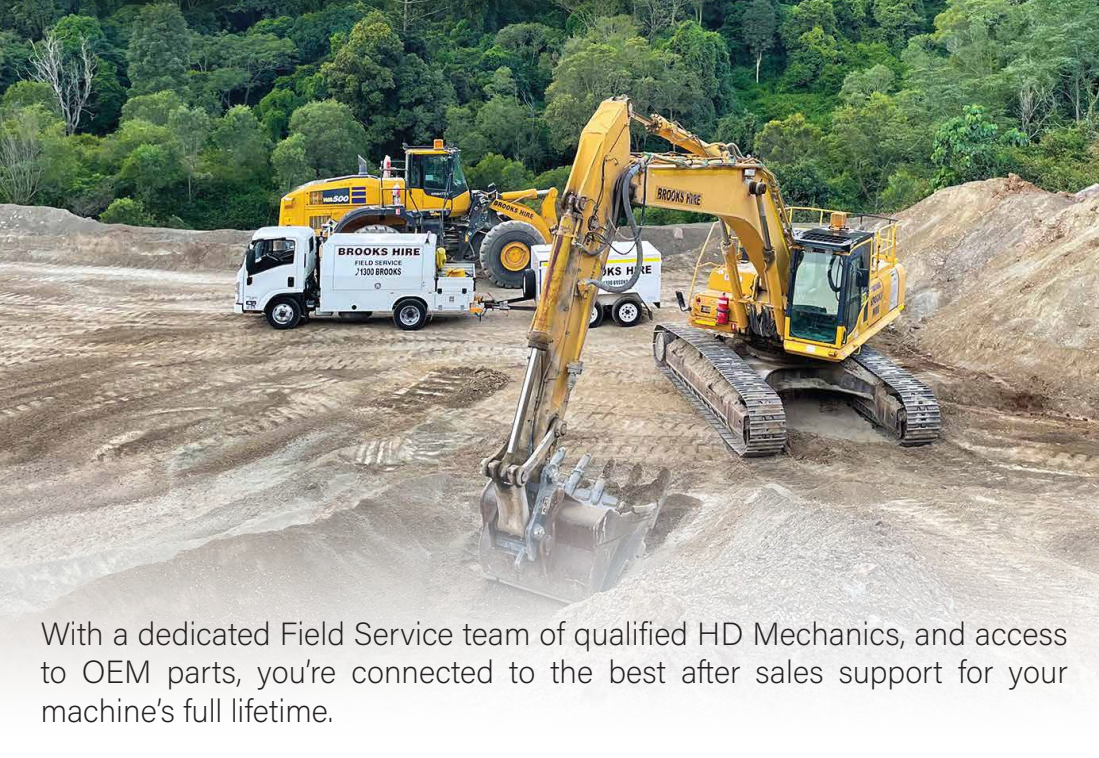
A Max. Digging Height	12580 mm
B Max. Dumping Height	8080 mm
C Max. Digging Depth	8200 mm
D 8-Inch Horizontalplane Digging Depth	8010 mm
E Max. Vertical Wall Digging Depth	5400 mm
F Max. Digging Reach	13940 mm
G Min. Swing Radius	6780 mm
H Max. Ground Digging Reach	13470 mm

STANDARD

Length of Boom	7600 mm
Length of Arm	3400 mm
Bucket Capacity	6m ³ - 7m ³



SERVICE LIKE NO OTHER



With a dedicated Field Service team of qualified HD Mechanics, and access to OEM parts, you're connected to the best after sales support for your machine's full lifetime.

QUALITY



Quality tested machines, developed and built for Australian conditions.

GUARANTEE



All of our XCMG models come with first class warranty cover.

ANY TIME



Our team of experts are available 24 hours a day, 7 days a week.



PARTS ON YOUR DOORSTEP

Access to parts and support is made easy through XCMG's Australian Technical and Service Centre.

SUPPORT FROM BRANCHES AUSTRALIA WIDE



With Brooks Equipment branches Australia-wide, you have complete coverage for support and servicing, wherever you are in the country.

BROOKS

EQUIPMENT

Discover more about your XCMG machine



1300 BROOKS (276 657)

@ sales@brooksequipment.com.au

www.brooksequipment.com.au