

*DESIGNED & BUILT*  
**FOR YOUR SUCCESS**  
*ON THE MINE SITE*



**MADE FOR AUSTRALIAN CONDITIONS**



**HYDRAULIC EXCAVATOR**  
**XE7000**

Product Specifications

OPERATING WEIGHT  
672,000 kg

RATED POWER  
2 x 1193 kW / 1800 rpm

BUCKET CAPACITY  
34m<sup>3</sup>

ENGINE  
Cummins QSK50-C1600





## **Built for tough mining conditions.**

## **PRODUCT FEATURES**

### **HIGHLY EFFICIENT & DEPENDABLE CONTROL SYSTEM**

The control system which is based on double power units, satisfies the synchro coupling requirement of the dual power system; achieving optimum usage of excavator power, guaranteeing coordination of single and combined movements, and fulfilling the optimum exertion of engine and main pump power specific to a different operating mode. The intelligent monitoring system and fault self-analysis system can monitor the operating state of the excavator in real time.

### **ADVANCED ENERGY CONSERVING TECHNOLOGY**

The external valve flow regenerative system, collects the energy produced by the boom lowering movement and bucket rod retraction, applying the collected energy to other executing elements. The closed type slewing system is used to collect slewing brake energy.

### **RELIABLE SAFETY TECHNOLOGIES**

Multiple cameras capture images of the surroundings, displayed as a 360° panoramic image. The dual-axis level pitch sensor can monitor the machine's angle relative to the horizontal level in real time; helping to ensure safe operation.

### **HIGHLY RELIABLE & DURABLE**

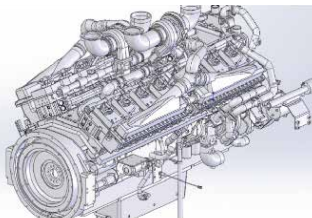
Major structural parts are designed in box-shapes and made of high strength materials. Designed with finite element optimisation, the machine achieves high fatigue resistance.

### **QUICK & CONVENIENT MAINTENANCE**

The electric lubrication system's pivoting points are centralised, with the centralised injection system able to refill all types of oils and greases, like hydraulic oil, slewing gear oil and transfer case oil.

### **HIGHLY COMFORTABLE WORKING ENVIRONMENT**

The cab is equipped with a pure electric, large power air conditioning system. The multi-point supporting shock absorber can ease shocks and reduce noises. The cab has a reasonable arrangement of switches and handles, a compact front passenger seat layout, storage box, and A/C return air window layers. The large front window glass offers a wide field of view.





# EXCELLENCE UNDER PRESSURE

## ■ HIGH PERFORMANCE ENGINE

The turbocharged Cummins engine, utilises an advanced modular common rail fuel system, providing ultra-high injection pressure and plenty of power.

The quantum system monitors each working state of the engine, prolonging the service life, and reducing the cost of use.

The low temperature after cooling, guarantees the air intake temperature and service life of the engine cylinder body.

## ■ EFFICIENT FUEL & HYDRAULIC SYSTEM

The multi-stage fuel filter system allows the filter to reach up to 99% efficiency; effectively filtering impurities and moisture in the fuel to prolong the engine life.

Arranged in a parallel configuration, fuel inlet resistance is reduced, meeting oil inlet requirements.

The transparent water cup and level alarm, ensure manageable drainage.

The hydraulic system utilises a high pressure filter to reduce the oil pollution in the system; improving the service life of the hydraulic elements.

## ■ HEAVY DUTY WORKING DEVICE

Designed to tackle the harshest mining conditions, key parts of the excavator are made from high-strength, wear-resistant cast steel and steel plates. Pin parts are made from closed floating pins, equipped with an automatic lubrication system.

The bucket is constructed from world-renowned alloy casting, with a wear-resistant bucket teeth system. Offering strong penetration, good wear resistance, and convenient replacement.

The heavy-duty combined chassis is designed specifically for mining, with key bearing parts made of high-strength steel to ensure the reliability of the chassis.

The heavy-duty undercarriage is especially designed for mining environments. The track shoe is designed with a casting structure, and a double arc rolling surface to improve its compressive ability and wear resistance.

## ■ ADAPTABLE TO HARSH ENVIRONMENTS

The mining heavy-gray air filter, can effectively prevent dust entering during operation in dusty environments.

Optional liquid heater for easy starting of the engine in ultra-low temperatures.

*"A really friendly group of people with a huge range of equipment."*

**Alan Hall - Brooks Equipment Customer**





# MORE INTELLIGENT OPERATION & MANAGEMENT

## CONVENIENT SERVICEABILITY

- Key systems are configured with devices to monitor the equipment and working conditions in real time, able to detect faults in person, and remotely.
- The machine's fully automatic single-line centralised lubrication system, accurately controls the amount of grease required, and the lubrication interval for each lubrication point.
- The fast fill system achieves centralised maintenance of the whole machine from the ground; improving maintenance efficiency and reducing labour intensity.

## RELIABLE SAFETY

- Large screen display and multi-point video monitor, can eliminate blind areas for safer operation.
- Utilising the Muster II fire suppression system, the power compartment and pump room are fully equipped to ensure the safety of equipment use in the event of a fire.

## DESIGNED FOR THE OPERATOR

- Integrated GPS system, allows for remote monitoring, control, and diagnosis. Machine location, working parameters on site, and alarm information can be monitored.
- Spacious cab with full field of view, double seats, and FOPS. The fully automatic, high power AC and heating system ensures a comfortable operating environment. Shock absorption with multipoint support, effectively reduces vibration and noise, minimising fatigue of the operator.

## EFFICIENT RETURN

- The independent closed-type rotating system, guarantees the unloading height based on operating conditions; withdrawing the rotating brake energy for greater energy conservation.
- Hydraulic elements and the electronic control positive flow system, prolong the service life of the whole machine, and improve working efficiency.
- The advanced out-of-valve regeneration and confluence system allow the generation and confluence flow to be much greater, reducing energy consumption and improving its utilisation in operation.
- The advanced temperature control cooling system, can automatically control air volume according to the oil temperature; saving energy and reducing noise. Use of corrugated tube cooling, improve the cooling efficiency.
- The hydraulic chassis tension system, greatly reduces the impact on the road surface of the mine during travel, not only improving operation comfort, but prolonging the service life of the whole machine's structural parts.
- The intelligent control system achieves accurate power matching between the power system and hydraulic system, for more efficient work and reduced energy consumption.



# XE7000

## Hydraulic Excavator

### DIMENSIONS & SPECIFICATIONS

**BROOKS**  
EQUIPMENT



Scan to view the XE7000  
product brochure

#### MAIN SPECIFICATIONS

##### ENGINE

Model	Cummins QSK50-C1600
Direct Injection	Yes
Four Strokes	Yes
Water Cooling	Yes
Turbo-charging	Yes
LTA	Yes
No. of Cylinders	16
Output Power	2 x 1193 kW @ 1800 rpm
Torque/Speed	2 x 6835/1500 Nm
Displacement	2 x 50.3 L

##### MAIN PERFORMANCE

Travel Speed (H/L)	1.5 km/h
Rotating Speed	3.5 r/min
Gradeability	17°
Ground Pressure	276 kPa
Bucket Digging Force	2270 kN
Arm Crowd Force	1830 kN
Max. Traction Force	2315 kN

##### HYDRAULIC SYSTEM

Main Pump	8 Plunger Pumps
Rated Flow of Main Pump	8 x 760 L/min
Pressure of Prime Valve	32 MPa
Pressure of Travel System	27 MPa
Pressure of Swing System	35 MPa
Pressure of Pilot System	5.5 MPa

##### OIL CAPACITY

Fuel Tank Capacity	13000 L
Hydraulic Tank Capacity	6000 L
Engine Oil Capacity	2 x 161 L

##### DIMENSIONS

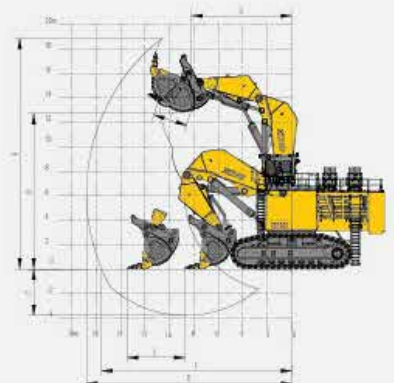
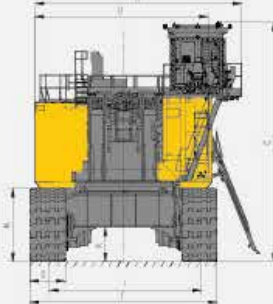
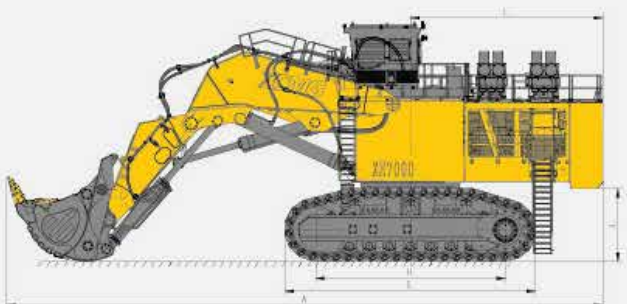
A Overall Length	23500 mm
B Overall Width	9090 mm
C Overall Height	9440 mm
D Width of Platform	7000 mm
E Length of Crawler	10000 mm
F Overall Width of Chassis	7400 mm
G Width of Crawler	1400 mm
H Track Length on Ground	7500 mm
I Crawler Gauge	6000 mm
J Clearance Under Counterweight	2885 mm
K Min. Ground Clearance	1360 mm
L Min. Tail Swing Radius	7930 mm
M Height of Crawler	2900 mm
Operating Weight	672000 kg

##### WORKING SCOPE

A Max. Digging Height	18700 mm
B Max. Dumping Height	12900 mm
C Max. Digging Depth	3800 mm
D 8-Inch Horizontal Digging Depth	/ mm
E Max. Vertical Wall Digging Depth	/ mm
F Max. Digging Reach	16700 mm
G Min. Swing Radius	9250 mm

##### STANDARD

Length of Boom	8000 mm
Length of Arm	5000 mm
Bucket Capacity	34 m <sup>3</sup>





# SERVICE LIKE NO OTHER



With a dedicated Field Service team of qualified HD Mechanics, and access to OEM parts, you're connected to the best after sales support for your machine's full lifetime.

## QUALITY



Quality tested machines, developed and built for Australian conditions.

## GUARANTEE



All of our XCMG models come with first class warranty cover.

## ANY TIME



Our team of experts are available 24 hours a day, 7 days a week.



## PARTS ON YOUR DOORSTEP

Access to parts and support is made easy through XCMG's Australian Technical and Service Centre.

## SUPPORT FROM BRANCHES AUSTRALIA WIDE



With Brooks Equipment branches Australia-wide, you have complete coverage for support and servicing, wherever you are in the country.

**BROOKS**  
EQUIPMENT

Discover more about your XCMG machine



📞 1300 BROOKS (276 657)  
@ sales@brooksequipment.com.au  
🌐 www.brooksequipment.com.au