

TECHNICALLY ADVANCED

HIGH PERFORMANCE | LOW EMISSIONS



MADE FOR THE AUSTRALIAN MINE SITE



MINING EXCAVATORS

XE800D

Product Specifications

OPERATING WEIGHT

78,000 kg

OUTPUT POWER

403 kW/2100 RPM

BUCKET CAPACITY

3.8m³ - 5.6m³

ENGINE

Perkins 2506D

Designed for the Aussie mine site



BETTER WAYS TO WORK

- The Perkins 2506D engine provides strong power, low noise, low emissions, high reliability, and long maintenance cycles, to meet the needs of various construction conditions.
- The high quality hydraulic system and hydraulic components, create an advanced and reliable positive flow control system, providing stronger excavation capabilities.
- The spacious cabin, with a great field of view, suspension seat, high-power A/C and heating, and intelligent control system, optimises the overall operating experience.
- Maintenance is made easy with fuel filters, oil filters, pilot filters, water tanks, and electrical components directly maintainable on the walking table.

MACHINE WALKAROUND

ENGINE

Engine: Tier III 2506D- E15TA
Oil-water separator with water level sensor
Radial seal air filter
Cooling components of 50° high temp. environment
Radiator dust screen
Fuel leveller
Oil and water quick discharge device
Independent cooling module with reverse blow function
Fuel breather valve
Air differential pressure indicator
Automatic idle speed

HYDRAULIC SYSTEM

Boom/arm flow regeneration
Reverse rotary damping valve
Automatic rotary parking brake
Travel straight hydraulic circuits
Boom priority valve
Rotary logic valve
Hydraulic oil ISO VG 46
Rotary anti-sway valve
Spare valve disc
Instrument pressure monitor
Electric self-lubrication system
Arm concentration

WORKING DEVICE

Rock bucket 5.2m³
Arm 2.57m
Boom 7m
11.3t counterweight

CABIN

Pressurised cab
Completely adjustable air suspension seat
Adjustable arm rest
Safety belt (51mm width)
Openable front windscreen glass
Double layer laminated windshield
Slideable upper window of door
Double-way air-out conditioner with automatic and pressurised defroster
LCD display with alarm, filter/fluid change, and working hours data
Two stereo speakers
Beverage holder
Coat and hat hook
Washable floor mat
A/C system
High/low speed shift gears
Shade curtain
Top skylight
Multiple range wiper
Heating and cooling storage box
Wireless radio
Data link socket

ELECTRIC SYSTEM

Battery 4 x 950 CCA
Alternator 95 A
Start motor 9kW
Travel alarm
Lighter 24V
Camera
USB interface 5V
XEICS intelligent control system

LAMP

Boom working light (left and right)
Storage box working light
Light inside cab
Front working light at top of cab
Rear working light at top of cab

CHASSIS AND PROTECTIVE GUARD

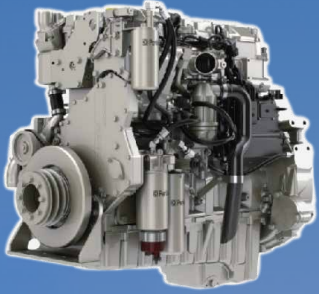
Underframe bail
Close plate at bottom of chassis
Close plate of travel motor
Double rib track plate 650mm
Extended chassis

SAFETY & SECURITY

Door lock on cab and chambers
Alarm horn
Spacer plate between engine and oil chamber
Emergency stop of engine
Emergency exit of rear window
Shutdown switch of battery
Holding valve of boom and arm
Overheat alarm
Safety rail and pedal
Rotating arm light
Anti-skid plate / anti-slip tip
Hydraulic safety lock lever
Emergency escape hammer
Rearview mirrors
Rearview monitor camera
FOPS structure

THE BEST OF BOTH

GREENER OPERATION & EFFICIENT RETURN



PERKINS 2506D-E15TA engine, with a rated power of 403kW, maximum torque of 2466Nm, and tier III emission standards. Its strong power, low noise, low emissions, high reliability, and long maintenance cycle, meets the needs of various construction conditions.

A MORE EFFICIENT RETURN is achieved through the excellent and reliable electronic control system, able to maximise the use of engine power.



THE XE800D FEATURES

- FFTC pre-injection technology
- Output power on demand
- Matching degree of engine and hydraulic system over 95 percent
- Improved engine stall speed by 30 percent
- Engine stall recovery time reduced by 25 percent, ensuring fast and efficient operation of the machine and reduction in energy consumption.
- Three working modes: H (heavy load), S (standard load), and L (light load), to meet various operating requirements. Defaulting to L mode at power on, the throttle knob is used to change between working modes and speeds of the engine.
- The output power of the main pump has three modes and gears, controllable via the throttle knob.



EQUIPMENT YOU CAN RELY ON

HYDRAULIC SYSTEM

The hydraulic system's reliability is improved by the components and positive flow control system; the main valve has independent controllable regeneration, confluence, and priority functions, which improves the controllability of the whole machine.

The machine uses a completely independent heat dissipation control system; automatically controlling the fan speed according to the oil, water, and intercooling temperatures, to save energy and reduce noise. A dual-pump and dual-circuit cooling system achieves independent control, while the fan has a reverse function, for easy cleaning of the radiator.

Full protection rail clamps on the chassis, and a chain rail retaining structure on the drive wheel side, effectively protects against stones entering the crawler chain rail, causing wear. Double reinforced track pads provide strong grip and better steering performance.

FILTRATION SYSTEM

The XE800D is equipped with a three-stage filtration system: two-stage rough filtration and one-stage fine filtration (two fine filters are connected in parallel). This effectively filters impurities in the oil to ensure long-term, high-load, continuous and reliable operation of the engine under harsh conditions.

The maintenance-free swirl tube air pre-filter, and two-stage radial sealed air filter - with a filtration efficiency of 99.99 percent - allow the machine to operate efficiently in harsh mining conditions.

REINFORCED DESIGN

The carefully designed and reinforced front-end working device has undergone fatigue strength tests, meeting the needs of heavy-duty mining. Penetration and wear resistant as standard, there are a variety of bucket teeth for different construction conditions.

Key parts of the boom and stick are designed with forgings, providing great bearing capacity and high reliability.

The I-beam turntable structure is made of welded steel plates, to withstand positive and negative bending moments, and ensure the strength of the upper machine. Left and right skirts are designed with D-shaped structural steel, effectively preventing deformation.

The electrical system is designed with aviation-grade protection, and the Gallop plug-in connector has excellent protection and conductivity.

The entire machine's wiring harness is fixed with a reliable dipping clamp, preventing wear.

The LED work lights are low energy consumption, with high-brightness and a life span of 60,000 hours.

The controller is made of sturdy and durable aluminium casing, with advanced heat dissipation performance, and stable data storage.

FUEL INJECTION

The 2506D-E15TA engine uses a mechanical and electronic single injector fuel system. Electronic control of the injector is realised through ECM, and the cylinders do not interfere with each other.

Full electronic control can accurately operate the fuel injection amount and time, reduce fuel consumption, and improve engine efficiency.

"A really friendly group of people with a huge range of equipment."

Alan Hall - Brooks Equipment Customer



DESIGNED FOR THE OPERATOR

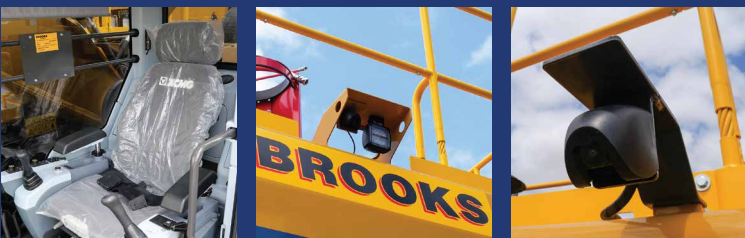
STRUCTURALLY STRONG

- The reinforced positive pressure cab, improves sealing performance by 70 percent.
- FOPs cab comes as standard, with an optional front window protection net for additional safety.
- Thickened, specially shaped steel is used in the design of the cab frame, and high-performance silicone shock absorbers are implemented, to eliminate the interference of the machine's vibration to the operator.



OPERATOR COMFORT

- The streamlined design and luxurious interior make for a comfortable working environment.
- The cabin has ample legroom and plenty of storage space, and is ergonomically designed with an intelligent layout of operating buttons at your fingertips.
- The walking pedal is smooth and even, and the angle of the foot pedal is positioned for comfort.
- A large operating field of view is achieved through the panoramic front and side windows, for vision in all directions.
- High-power cooling and heating ensures fast temperature control.
- The rear camera and rear light ensure safety when turning and reversing during night operations.



SAFETY

INTELLIGENT CONTROL

- The intelligent control system effectively matches the hydraulic system and the power system; adjusting the working state to improve efficiency and save energy.
- The diagnostic expert system provides digital diagnosis support for maintenance technicians.
- The complete IoT platform, enables remote monitoring and diagnosis, real-time reading of operating conditions, and vehicle dynamics.
- Multiple power self-matching modes, enables adaption to different machines and working conditions.
- The onboard OBD system, records the machine's running information in real time, to quickly analyse any faults.
- The behaviour monitoring system and remote control system facilitate safer construction.
- Meeting the needs of customers in high altitudes, the XE800D can automatically calculate the altitude through user-friendly GPS positioning, and engine working condition detection. The hydraulic pump's power is adjustable according to the altitude and intake pressure data.

SERVICEABILITY

■ MAINTENANCE AT YOUR FINGERTIPS

Fuel filters, oil filters, pilot filters, water tanks, and electrical components can be directly maintained on the walking table, which is easy to operate and consequently saves on servicing costs. Optional fuel, hydraulic oil, and gear oil centralised filling systems are available for quick detection, filling, or oil replacement.

■ CENTRALISED LUBRICATION (Optional)

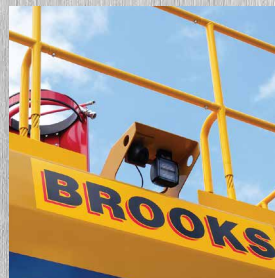
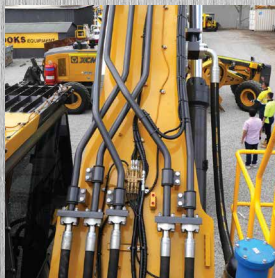
Single-line, full-automatic, centralised lubrication system, allows for regular and quantitative grease filling.

■ MONITORING MADE EASY

The built-in expert diagnosis system includes engine controller, main controller, electronic monitor, GPS, and fault diagnosis. Data and information communication is achieved through the CAN bus system; offering real-time monitoring, remote monitoring, fault diagnosis, and parameter and function adjustment.

OPTIMISED DESIGN

PROVIDING COMFORT WITH EXCELLENT RETURN



XE800D

MINING EXCAVATOR

DIMENSIONS & SPECIFICATIONS

BROOKS
EQUIPMENT



Scan to view the XE800D
product brochure

MAIN SPECIFICATIONS

ENGINE

Model	Perkins 2506D
Direct Injection	Yes
Four Strokes	Yes
Water Cooling	Yes
Turbo-Charging	Yes
Air to Air Intercooler	Yes
No. of Cylinders	6
Output Power	403/2100 kW/rpm
Torque/Speed	2466/1400 Nm
Displacement	15.2 L

MAIN PERFORMANCE

Travel Speed (H/L)	4.1/2.8 km/h
Rotating Speed	7 r/min
Gradeability	35°
Ground Pressure	113 kPa
Bucket Digging Force	390 kN
Arm Crowd Force	332 kN
Maximum Traction	575 kN

HYDRAULIC SYSTEM

Rated Flow of Main Pump	2 x 450 L/min
Pressure of Prime Valve	35 MPa
Pressure of Travel System	35 MPa
Pressure of Swing System	32 MPa
Pressure of Pilot System	3.9 MPa

OIL CAPACITY

Fuel Tank Capacity	925 L
Hydraulic Tank Capacity	500 L
Engine Oil Capacity	67 L

DIMENSIONS

A Overall Length	12600 mm
B Overall Width	4420 mm
C Overall Height	4690 mm
D Width of Platform	3470 mm
E Length of Crawler	5955 mm
F Overall Width of Chassis	4360 mm
G Width of Crawler	650 mm
H Track Length on Ground	4700 mm
I Crawler Gauge	2750/3410 mm
J Clearance Under Counterweight	1610 mm
K Min. Ground Clearance	850 mm
L Min. Tail Swing Radius	4015 mm
M Height of Crawler	1420 mm
Operating Weight	78000 kg

WORKING SCOPE

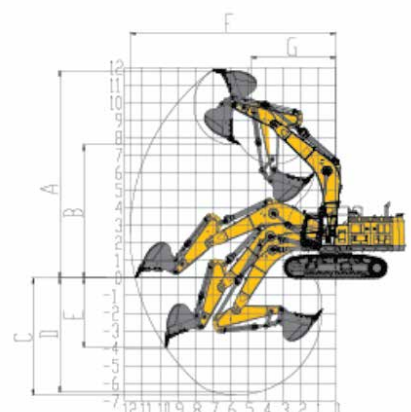
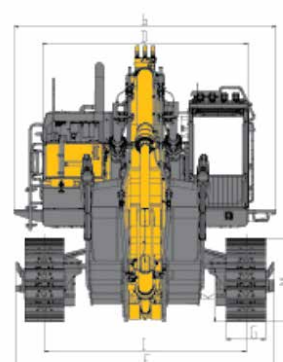
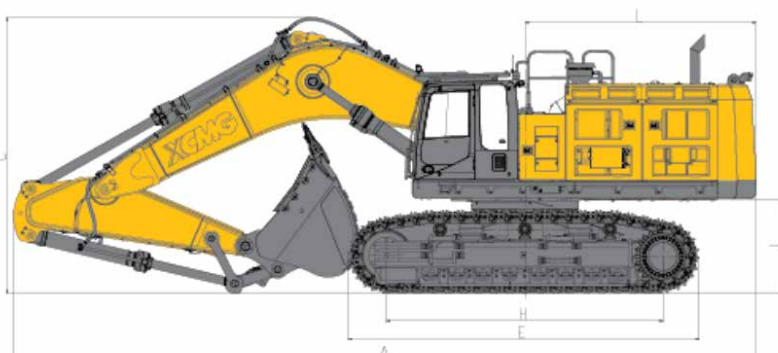
A Max. Digging Height	11830 mm
B Max. Dumping Height	7600 mm
C Max. Digging Depth	6660 mm
D 8-Inch Horizontal Plane Digging Depth	6500 mm
E Max. Vertical Wall Digging Depth	3950 mm
F Max. Digging Reach	11690 mm
G Min. Swing Radius	4810 mm

STANDARD

Length of Boom	7000 mm
Length of Arm	2570 mm
Bucket Capacity	5.2m ³

OPTIONAL

Length of Arm	3000 mm
Bucket Capacity: Rock Strength	3.8m ³ / 4m ³ / 4.6m ³ / 5m ³ / 5.6m ³



SERVICE LIKE NO OTHER



With a dedicated Field Service team of qualified HD Mechanics, and access to OEM parts, you're connected to the best after sales support for your machine's full lifetime.

QUALITY



Quality tested machines, developed and built for Australian conditions.

GUARANTEE



All of our XCMG models come with first class warranty cover.

ANY TIME



Our team of experts are available 24 hours a day, 7 days a week.

PARTS ON YOUR DOORSTEP

Access to parts and support is made easy through XCMG's Australian Technical and Service Centre.

SUPPORT FROM BRANCHES AUSTRALIA WIDE



With Brooks Equipment branches Australia-wide, you have complete coverage for support and servicing, wherever you are in the country.

BROOKS

EQUIPMENT

Discover more about your XCMG machine



📞 1300 BROOKS (276 657)
@ sales@brooksequipment.com.au
🌐 www.brooksequipment.com.au