

PERFORMANCE & POWER

**BUILT FOR
TOUGH JOBS**

**DESIGNED FOR
TIGHT SPACES**

MADE FOR AUSTRALIAN CONDITIONS



ARTICULATED BOOM LIFT **XGA20K**

Product Specifications

OPERATING WEIGHT

9,900 kg

RATED POWER

36 kW / 2600 rpm

WORKING HEIGHT

20.63 m

ENGINE

Kubota V2403BM

Built for tough Aussie conditions.



PRODUCT HIGHLIGHTS

- High-performance boom: 20m Σ -shaped linkage-folding boom offers compact layout, excellent obstacle-crossing ability, and precise, efficient operation.
- Versatile load capacity: Dual high-load design (256kg/350kg) supports various working conditions across industries like construction, petrochemical, and leasing.
- Superior maneuverability: 360° continuous slewing and compact dimensions (2.4m height, 8.54m length, 2.3m width) enable easy navigation and container transport.
- Exceptional terrain handling: Four-wheel drive and axle balance system deliver 45% gradeability and strong ground adaptability.
- User-friendly and safe: Simple controls, high safety standards, and reliable performance make it suitable for both industrial and warehouse applications.

MACHINE WALKAROUND

ENGINE

Pre-air-cleaner (cyclone style)
Dust-proof Net on cover panel
Engine oil drain coupler
Expansion tank
Fuel cooler
Fuel pre-filter with water separator
Radiator, oil cooler and intercooler

HYDRAULIC SYSTEM

Drain filter (Return hydraulic filter)
Pilot filter
Suction filter
Main control valve connection assembly
Power unit assembly
Joint fitting of oil filter
Luffing cylinder
Steering cylinder
Hydraulic oil tank
Telescopic cylinder
Oscillating cylinder
Emergency pump
Cylinder balance valve
Curved arm cylinder
Level cylinder
Travel retarder

ELECTRIC SYSTEM

Boarding control assembly

Heat-resistant and antistatic rubber
Power switch
Acoustic device
Relay
Controller
Limit switch
Detector switch
Angle detection device
Double channel pressure sensors
Walking handle
Dual shaft handling handle
Foot switch
Turntable horizontal sensor
Weighing sensor

WORKING DEVICE

Primary work platform
Anti-extrusion device
Toolbox
Articulated arm
Telescopic arm
Lower slide
Pin
Self-lubricating bearing

UNDERCARRIAGE

Car-body structure
Cover plate
Wheel hub suite

Solid tie assembly
Steering knuckle
4 tie down points

MONITORING SYSTEM

Warning and alarm system:

- Overheating
- Engine warning
- Engine oil pressure
- Alternator
- Minimum fuel level

Remote information processing system to view location, usage, and fault records*

Display:

- Water temperature
- Hour
- Fuel level
- Clock
- Work mode
- Working parameter

OTHER

Working alarm
Platform power*
Compressed air hose*
Maintenance and Operating Manuals
Operator protection alarm*
Generator options for 240V power to platform*

DESIGNED TO PERFORM, BUILT TO LAST

HEAVY-DUTY LOAD CAPACITY

256kg and 350kg dual load zones with a large load design to meet the needs of different working conditions.

360° CONTINUOUS ROTATION

Full 360° continuous turntable rotation allows for more convenient and efficient operation in tight or complex job sites.

COMPACT AND TRANSPORTABLE

The whole machine measures 2.4m in height, 8.52m in length, and 2.3m in width—compact dimensions that make container transport and on-site manoeuvrability easy.

SUPERIOR OFF-ROAD CAPABILITY

Four-wheel drive system with 45% climbing capacity. Standard-equipped axle balancing improves ground adaptability across uneven terrain.

GRAVITY BOOM DESCENT TECHNOLOGY

Adopts gravity-based boom descent, offering smoother operation and improved energy efficiency.



SMOOTH SPEED CONTROL

Infinitely adjustable speed control enhances precision, operator comfort, and safety during operation.

WATER-WADING UNDERCARRIAGE

A non-powered, electrically independent undercarriage design boosts the vehicle's water-wading capabilities.

DURABLE IRON HOARDINGS

Robust iron hoardings provide a high-reliability structural design for long-term durability.

EMERGENCY POWER SYSTEM

Equipped with an independent emergency power source, ensuring safe and easy recovery in emergency situations.



"A really friendly group of people with a huge range of equipment."

Alan Hall - Brooks Equipment Customer

TRUE VERSATILITY

- XGA20K AT A GLANCE -



XGA20K

Articulated Boom Lift

DIMENSIONS & SPECIFICATIONS



Scan to view the XGA20K product brochure

MAIN SPECIFICATIONS

POWER SOURCE

Engine Type	Kubota V2403BM-DI-CTO4e (Stage III)
Engine Power Rating	36 kW / 2600 rpm
Batteries	12 V DC proportional

WEIGHT

Total Machine Weight	9,900 kg
----------------------	----------

TYRES

Standard Tyres	36X14-20 - 355/55D625
----------------	-----------------------

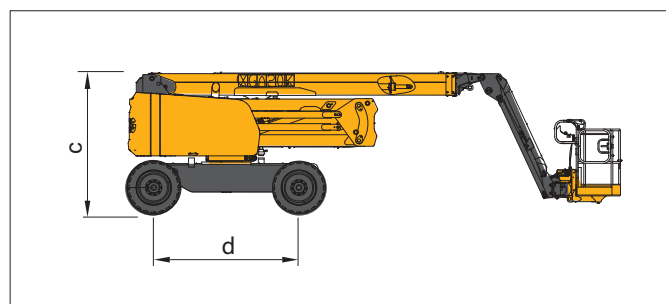
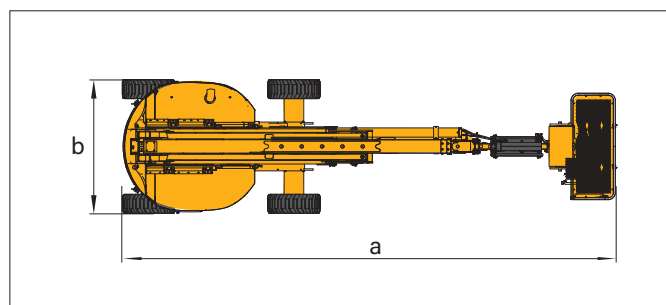
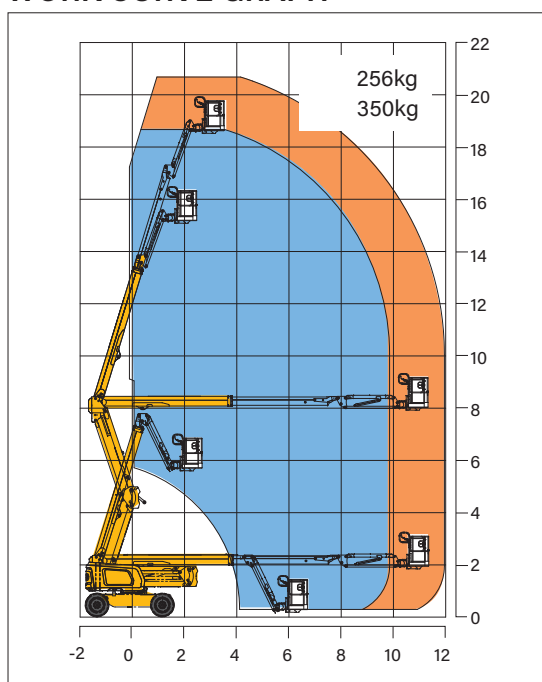
DIMENSIONS

Overall Length	
a Stowed, in Operation	8.52 m
Transport, Short Arm Folded Down	6.26 m
b Overall Width	2.3 m
Overall Height	
Stowed, in Operation	2.4 m
Transport, Short Arm Folded Down	3 m
Platform Size	1.83 x 0.76 x 1.15 m
d Wheelbase	2.5 m
Min. Ground Clearance	330 mm

WORKING SCOPE

Max. Working Height	20.63 m
Max. Platform Height	18.63 m
Max. Working Range	12.08 m
Load Capacity	256 / 350 (Limited) kg
1st Boom Luffing Range	0° to +72°
2nd Boom Luffing Range	0° to +73°
Fly Jib Luffing Range	-65° to +70°
Turntable Rotation Angle	360°
Platform Rotation Angle	160°
Tail Swing	540 mm
Max. Travel Speed	
Contracted	5.5 km/h
Extended	0.6 km/h
Min. Turning Radius	
Inside	2.3 m
Outside	5 m
Max. Gradeability	
Counterweight Up	30% / 17°
Counterweight Down	45% / 24°

WORK CURVE GRAPH



SERVICE LIKE NO OTHER



With a dedicated Field Service team of qualified HD Mechanics, and access to OEM parts, you're connected to the best after sales support for your machine's full lifetime.

QUALITY



Quality tested machines, developed and built for Australian conditions.

GUARANTEE



All of our XCMG models come with first class warranty cover.

ANY TIME



Our team of experts are available 24 hours a day, 7 days a week.



PARTS ON YOUR DOORSTEP

Access to parts and support is made easy through XCMG's Australian Technical and Service Centre.

SUPPORT FROM BRANCHES AUSTRALIA WIDE



With Brooks Equipment branches Australia-wide, you have complete coverage for support and servicing, wherever you are in the country.

BROOKS
EQUIPMENT

Discover more about your XCMG machine



📞 1300 BROOKS (276 657)
@ sales@brooksequipment.com.au
🌐 www.brooksequipment.com.au