



# POWER MEETS PRECISION

MADE FOR AUSTRALIAN CONDITIONS



## TELESCOPIC BOOM LIFT **XGS22K**

Product Specifications

OPERATING WEIGHT

**12,460 kg**

RATED POWER

**36 kW / 2600 rpm**

WORKING HEIGHT

**22 m**

ENGINE

**Kubota V2403BM**

## Built for tough Aussie conditions.



## PRODUCT HIGHLIGHTS

- The XCMG Australia XGS22K Boom Lift is engineered for dynamic material handling in warehouse and industrial settings.
- An innovative straight-arm, self-propelled mobile lifting work platform with excellent performance, efficiency, powerful drive and easy operation.
- With robust strength and advanced features, it ensures precise and efficient elevation.
- With a maximum load capacity of 460kg, the XGS22K is the industry leader in working height and range, meeting the needs of large loads and working surfaces.

## MACHINE WALKAROUND

### ENGINE

Pre-air-cleaner cyclone style  
Dust-proof nrt on cover panel  
Engine oil drain coupler  
Expansion tank  
Fuel cooler  
Fuel pre-filter with water separator  
Radiator, oil cooler and intercooler

### HYRDAULIC SYSTEM

Drain filter (return hydraulic filter)  
Pilot filter  
Suction filter  
Main control valve connection assembly  
Power unit assembly  
Joint fitting of oil filter  
Luffing cylinder  
Steering cylinder  
Hydraulic oil tank  
Telescopic cylinder  
Oscillating cylinder  
Emergency pump  
Cylinder balance valve  
Curved arm cylinder  
Level cylinder  
Travel retarder

### ELECTRIC SYSTEM

Boarding control assembly  
Heat-resistant and antistatic rubber  
Power switch  
Acoustic device

Relay  
Controller  
Limit switch  
Detector switch  
Angle detection device  
Double channel pressure sensors  
Walking handle  
Dual shaft handling handle  
Foot switch  
Turntable horizontal sensor  
Weighing sensor

### WORKING DEVICE

Primary work platform  
Anti-extrusion device  
Toolbox  
Articulated arm\*  
Telescopic arm  
Lower slide  
Pin  
Self-lubricating bearing  
Half height mesh platform\*  
Platform anti-squeezer assist rail\*  
Mechanical anti-extrusion device\*  
Tool tray\*  
Aircraft protection device\*  
Air hose connection to platform\*  
AC power cable connection to platform\*  
Work light assembly\*

### UNDERCARRIAGE

Car body structure

Cover plate  
Wheel hub suite  
Solid tie assembly  
Steering knuckle  
4 tie-down points  
Solid tyres\*

### MONITORING SYSTEM

Warning and alarm system  
Overheating  
Engine warning  
Engine oil pressure  
Alternator  
Minimum fuel level  
Display:  
■ Water temperature  
■ Hour  
■ Fuel level  
■ Clock  
■ Work mode  
■ Working parameter

### OTHER

Working alarm  
Platform power\*  
Compressed air hose\*  
Maintenance and Operating Manuals  
Operator protection alarm\*  
Fall protection kit\*

\*Optional inclusion



# CLASS-LEADING PERFORMANCE

DESIGNED TO PERFORM | BUILT TO LAST

*Engineered for performance, safety, and reliability, the XCMG XGS22K straight boom lift sets a new benchmark in its class. Designed to handle demanding job sites with ease, it combines innovative technology, robust construction, and user-centric features to deliver superior operational efficiency.*

## UNMATCHED LOAD CAPACITY IN ITS CLASS

With a maximum load capacity of 460kg, the XGS22K leads its metre class. It provides industry-best working height and outreach, making it ideal for carrying heavy loads and offering expansive working platforms when the job demands more.

## COMPACT STORAGE AND EASY TRANSPORT

The boom structure incorporates a double-linked tower boom, three-section telescopic boom, and a fly jib, enabling the lowest stowed height in its class for a straight-arm self-propelled lift. This compact design ensures easy transport and more convenient on-site storage.

## SUPERIOR STABILITY AND OFF-ROAD CAPABILITY

Using synchronised lift technology, the boom dynamically adjusts the machine's centre of gravity to enhance overall stability. Combined with a four-wheel drive system, off-road wide tyres, and an axle balancing system, the XGS22K is built to tackle tough terrain with confidence.

## INTELLIGENT LOAD MONITORING AND EXTENDED SERVICE LIFE

Multi-load envelope control technology provides real-time load monitoring, optimising the boom's load-handling efficiency. A self-balancing extension mechanism increases operational safety and extends the lifespan of the wire rope, making the XGS22K a long-term investment in reliability.

## ADVANCED CONTROL SYSTEM FOR SMARTER OPERATION

The electrical system utilises distributed PLC and CAN bus technology, supporting functions such as automatic levelling, platform load weighing, dynamic monitoring, and fault detection. These intelligent features help ensure smooth and safe operation on every job.

## NEAT, DURABLE HYDRAULIC LAYOUT

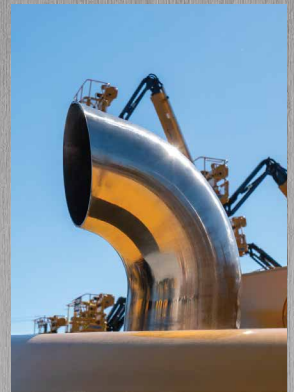
Featuring a predominantly rigid pipe hydraulic system, the XGS22K maintains a clean, organised layout that reduces the risk of hose wear and potential failure. This not only improves machine reliability but also reduces downtime.





# TRUE VERSATILITY

- XGS22K AT A GLANCE -





# XGS22K

## Telescopic Boom Lift

### DIMENSIONS & SPECIFICATIONS

**BROOKS**  
EQUIPMENT



Scan to view the XGS22K  
product brochure

#### MAIN SPECIFICATIONS

##### POWER SOURCE

Engine Type	Kubota V2403BM-DI-CTO4e (Stage III)
Engine Power Rating	36 kW @ 2600 rpm
Power Source	12V DC proportional control

##### WEIGHT

Total Machine Weight	12,460 kg
----------------------	-----------

##### TYRES

Tyre Specifications	36×14-20; 355/55D625
---------------------	----------------------

##### DIMENSIONS

Overall Length	
a	Stowed, in Operation
	Transport, Short Arm Folded Down
b	Overall Width
c	Overall Height
d	Wheelbase
Platform Size	
Min. Ground Clearance	
Max. Tail Swing (Stowed)	
Turning Radius	
	Inside
	Outside

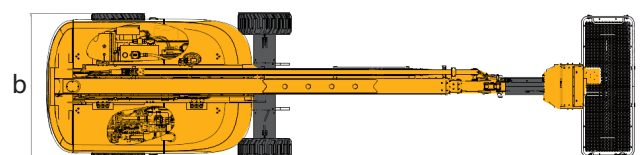
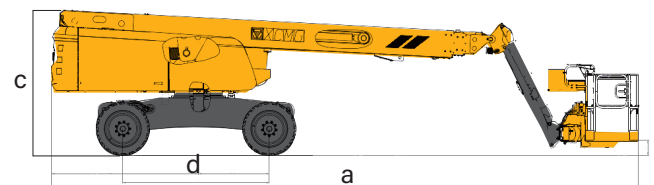
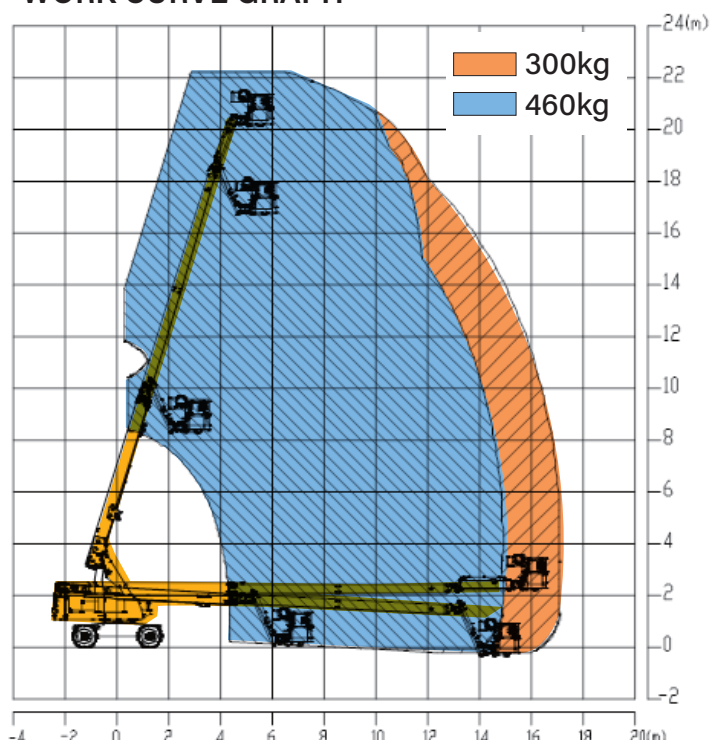
##### FLUID CAPACITIES

Fuel Tank Capacity	150 L
Hydraulic Tank Capacity	120 L

##### WORKING SCOPE

Max. Working Height	22 m
Max. Platform Height	20 m
Horizontal Reach / Working Radius	17.2 m
Load Capacity of Extended Platform	300 / 460 kg (Limited)
Boom Luffing Range	-3° to +73°
Fly Jib Luffing Range	-65° to +70°
Turntable Rotation Angle	360°
Platform Rotation Angle	160°
Max. Travel Speed	
	Stowed
	Extended
Max. Gradeability:	
	Counterweight End Up
	Counterweight End Down

#### WORK CURVE GRAPH





# SERVICE LIKE NO OTHER



With a dedicated Field Service team of qualified HD Mechanics, and access to OEM parts, you're connected to the best after sales support for your machine's full lifetime.

## QUALITY



Quality tested machines, developed and built for Australian conditions.

## GUARANTEE



All of our XCMG models come with first class warranty cover.

## ANY TIME



Our team of experts are available 24 hours a day, 7 days a week.



# PARTS ON YOUR DOORSTEP

Access to parts and support is made easy through XCMG's Australian Technical and Service Centre.

## SUPPORT FROM BRANCHES AUSTRALIA WIDE



With Brooks Equipment branches Australia-wide, you have complete coverage for support and servicing, wherever you are in the country.

# BROOKS

EQUIPMENT

Discover more about your XCMG machine



📞 1300 BROOKS (276 657)  
@ sales@brooksequipment.com.au  
🌐 www.brooksequipment.com.au