

PRACTICAL | POWERFUL | EFFECTIVE

COMPACTION



MADE FOR AUSTRALIAN CONDITIONS



VIBRATORY ROLLER

XS123/XS123PD

Product Specifications

OPERATING WEIGHT
12t (Smooth) 12.85t (Padfoot)

RATED POWER
104 kW / 2200 rpm

DRUM WIDTH
2.13 m

ENGINE
Cummins QSF3.8

Designed for Aussie conditions



PRODUCT HIGHLIGHTS

- **CUMMINS ENGINE**
Renowned Cummins QSF3.8 water-cooled turbocharged engine with high power reserve, low fuel consumption and low noise emission.
- **TORQUE & TRACTION**
Medium wet type axle with anti-slip differential, delivers auto torque allocation and max traction to suit road conditions, including gravel, mud, asphalt, dirt, aggregate and stones, plus speed control.
- **EXCELLENT GRADEABILITY**
Proportional ASC closed loop hydraulic drive system composed of a variable displacement pump, plus a constant motor.
- **EXCEPTIONAL COMPACTION**
Variable displacement piston pump and constant displacement hydraulic motor result in dual vibrating frequency and amplitude for excellent compaction.

MACHINE WALKAROUND

ENGINE

Cummins QSF3.8
Engine power: 104 kw
Fuel fill pump (lockable)
Engine emergency stop (1 inside cabin, 1 outside cabin)
Isolator (engine start motor)

TRANSMISSION

Joystick control

HYDRAULIC SYSTEM

Parking brake
Lockable hydraulic oil

ELECTRICITY

Starter isolator (battery)
Convenient 12-volt port
Radio
UHF radio with USB port
Battery isolator
Reverse alarm (voice)

CABIN

ROPS/ FOPS
Safety hammer
Air-suspension seat
Rear-view camera
Rear mirrors
Wiper
Air conditioning
Fan

LIGHTS

Beacon (1 front, 1 rear)
4 LED lights (2 front, 2 rear of cabin)

WORK DEVICE

2.13m drum
Tyres:
23.1-26-12G23TL
23.1-26-12R1TL

SAFETY & DOCUMENTARY

Manuals:
Operation & Maintenance
Spare Parts

OTHER

Fire suppression (optional)



The XS123 vibratory drum roller is available in smooth drum or padfoot drum variants, to best suit your requirements.

DIVERSE COMPACTION

EFFECTIVE | TECHNICALLY ADVANCED | PRACTICAL

XCMG's XS123 and XS123PD hydraulic drive, single drum vibratory roller, features high vibratory force to produce high compaction efficiency and compaction quality. It is used widely in compaction work on base layer, sub-base layer and rock fill.

- Full ROPS/FOPS cabin for operator safety.
- External E-stop, providing easy emergency shut-down.
- External power supply for jump starting the machine.
- Spacious cabin with expanded visibility. Reversing camera offers an exceptional view around the machine from the operator's seat.
- Double rotary warning light, 360° vision camera, and reversing alarm.

DRIVE CAPABILITY

- Electronic proportional anti-slip control, enables up to 50% climbing ability.
- Front and rear double hydraulic drive systems, provide greater traction capability.

COMPACTION QUALITY

- Three centre coincidence:
The "three centre coincidence" drum technology and the amplitude uniformity control technology, guarantees the compaction quality and improves the efficiency of dynamic and static compaction.

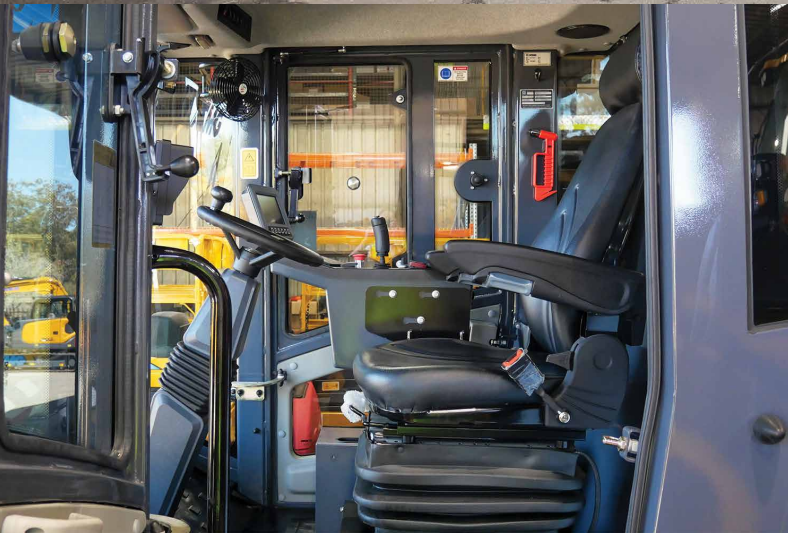
COMPACTION PERFORMANCE

- Dual frequency and dual amplitude compaction: 190/280 kN vibration force achieves maximum compaction depth, and is adaptable to different materials.



"A really friendly group of people with a huge range of equipment."

Alan Hall - Brooks Equipment Customer



MAINTENANCE MADE EASY

- Easy viewing LCD display and audio-visual alarm on dashboard, provides service and repair information.
- The external oil filter and fuel filter achieves quick and easy replenishment.
- The machine's hood is openable from ground level, providing easy access.

DESIGNED FOR THE OPERATOR

- Cabin insulation provides a quiet operating environment.
- Excellent temperature control is achieved through the powerful air conditioner.
- The wide suspension seat provides full support for the operator and reduces whole body vibrations.
- Adjustable seat and steering column are engineered for optimised ergonomics.
- Electronic joystick integrates the drum vibration button for easy control and comfort.
- Four LED working lights at the front and rear of the cab, provide excellent illumination for night operation.



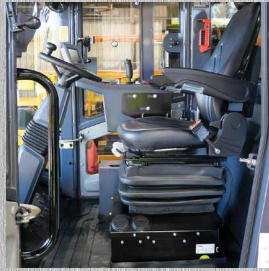
PRECISION IN DESIGN

OPERATOR COMFORT

CONVENIENT MAINTENANCE

EASY OPERATION

OUTSTANDING PERFORMANCE



XS123/XS123PD

VIBRATORY ROLLER

DIMENSIONS & SPECIFICATIONS

BROOKS
EQUIPMENT



XS123
product brochure



XS123PD
product brochure

MAIN SPECIFICATIONS

XS123/XS123PD	
ENGINE	
Model	Cummins QSF3.8
Rated Power	104 kW
Rated Speed	2200 r/min

WEIGHT PARAMETERS

Operating Weight	12000 / 12850 / 13360 kg
Front Axle Weight	6700 / 7550 / 8060 kg
Rear Axle Weight	5300 kg
Static Linear Load	308 N/cm

MANOEUVRABILITY PARAMETERS

Operating Speed:	
First Gear	0 ~ 5.5 km/h
Second Gear	0 ~ 11.2 km/h
Theoretical Gradeability	45%
Min. External Turning Radius	6800 mm
Min. Ground Clearance	401 / 443 / 443 mm
Wheel Base	3010 mm
Steering Angle	±30°
Oscillation Angle	±10°

COMPACTION PERFORMANCE

Vibration Frequency (Low/High)	30/35 Hz
Nominal Amplitude (Low/High)	0.9/1.8 0.8/1.6 0.8/1.6 mm
Exciting Force (Low/High)	190/280 kN
Drum Diameter	1523 mm
Compaction Width	2130 mm

XS123/XS123PD	
TYRES	
Spec.	23.1-26-12G23TL / 23.1-26-12R1TL
Ply Rating	12
Air Pressure	200 kPa

SERVICE REFILL CAPACITIES

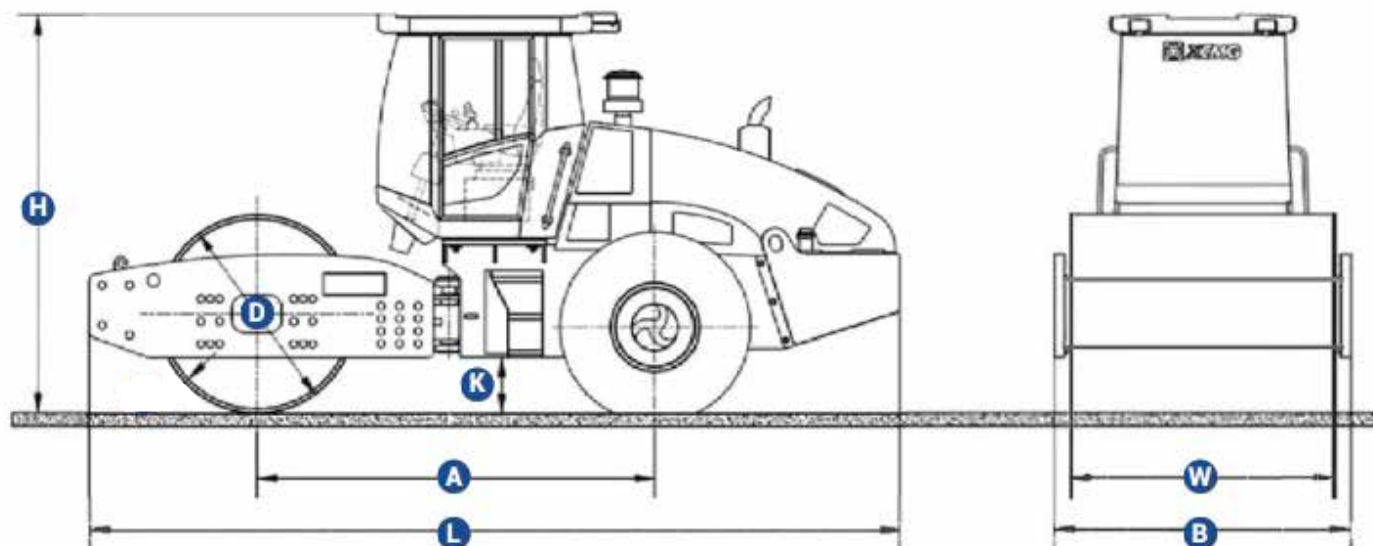
Fuel Tank	230 L
-----------	-------

XS123 DIMENSIONS

A	Overall Distance Between Drums	3010 mm
B	Overall Width	2300 mm
D	Drum Diameter	1523 mm
H	Overall Height	3150 mm
K	Min. Ground Clearance	393 mm
L	Overall Length	5940 mm
W	Drum Width	2130 mm

XS123PD DIMENSIONS

A	Overall Distance Between Drums	3010 mm
B	Overall Width	2300mm
D	Drum Diameter	1523 mm
H	Overall Height	3250 mm
K	Min. Ground Clearance	443 mm
L	Overall Length	5940 mm
W	Drum Width	2130 mm



SERVICE LIKE NO OTHER



With a dedicated Field Service team of qualified HD Mechanics, and access to OEM parts, you're connected to the best after sales support for your machine's full lifetime.

QUALITY



Quality tested machines, developed and built for Australian conditions.

GUARANTEE



All of our XCMG models come with first class warranty cover.

ANY TIME



Our team of experts are available 24 hours a day, 7 days a week.



PARTS ON YOUR DOORSTEP

Access to parts and support is made easy through XCMG's Australian Technical and Service Centre.

SUPPORT FROM BRANCHES AUSTRALIA WIDE



With Brooks Equipment branches Australia-wide, you have complete coverage for support and servicing, wherever you are in the country.

BROOKS
EQUIPMENT

Discover more about your XCMG machine



📞 1300 BROOKS (276 657)
@ sales@brooksequipment.com.au
🌐 www.brooksequipment.com.au