

XE215LC

HYDRAULIC EXCAVATOR



EXCAVATOR

XE215LC

Product Specifications

OPERATING WEIGHT
22,900 kg
RATED POWER
135kW / 2250 RPM
BUCKET CAPACITY
1.05 M ³
ENGINE
CUMMINS QSB7

Newly upgraded electric control positive hydraulic flow system with smoother, more precise movement and improved operability.

A PTO (Power Take Off) pump can provide additional hydraulic power to archive smooth operation performance.



Standard quick hitch hydraulic line, single/dual way auxiliary 1 hydraulic line, auxiliary 2 hydraulic line and drain hydraulic line for multi-purposes. Precise adjustment of pressure and flow in auxiliary lines.

Upgraded economic (N-mode), efficiency (P-mode), lifting mode, and other multi-mode control for variety of working conditions.

Optional upgraded GTX series double locking hydraulic quick hitch.



Operating weight: 22,900 kg
Rated power/speed: 135 kW/2,050 rpm
Bucket capacity: 1.05 m³



☎ 1300 BROOKS (276 657)
@ sales@brooksequipment.com.au
🌐 www.brooksequipment.com.au

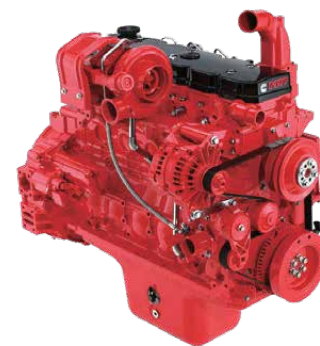
BROOKS
EQUIPMENT



Productive and Economical

Productive high power engine complies with Tier 3 emissions

Customized-curve fully electronically controlled Cummins engine increases 15 % torque. High-pressure common rail engine technology improves fuel utilization by 5 %. Stage III emission and low-speed with high-torque features provide more efficiency, energy saving ,and environmental protection.



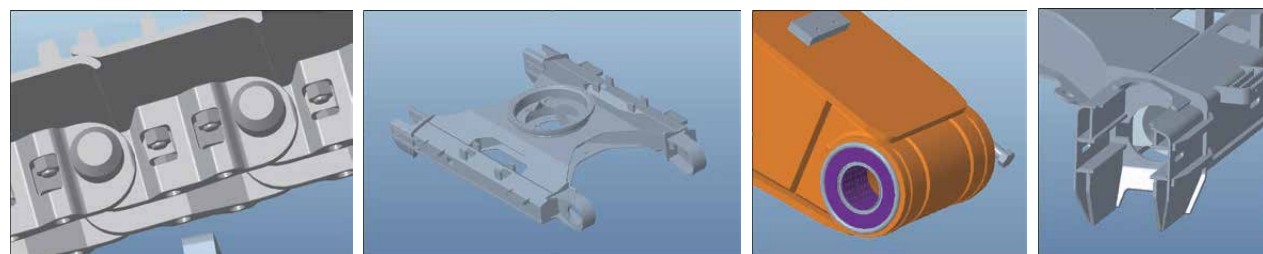
More powerful main pumps

2*130LPM large flow main pumps are newly upgraded with the powerful flow than ever. Combined with large diameter cylinders and our electric control positive hydraulic flow system, XE215LC archives optimized flow distributions and smooth operability.

Reliable

Upgraded undercarriage structure system improves load bearing performance, plus strengthened key stress-bearing parts of chain links improve the lifespan of the XE215LC.

Redesigned and reinforced boom, arm and bushes can deliver better stability and higher reliability.



More Comfortable and Safe

- 1 Operator's station
- 2 Ergonomic travel pedals
- 3 Air suspension seat
- 4 AC vents
- 5 Proportional hydraulic joystick
- 6 High quality speakers
- 7 Hammer control pedal
- 8 Engine stop switch
- 9 Color LCD monitor



1300 BROOKS (276 657)
@ sales@brooksequipment.com.au
www.brooksequipment.com.au

BROOKS
EQUIPMENT

► More energy-saving and environment-friendly

Centralized electrical box, air filter, oil filter and pilot filter are accessible for maintenance within hand reach.

Long maintenance period: Self-lubricating bearings are used at hinges of working devices, whose maintenance period can reach 500 hours. Maintenance periods of engine oil, oil filter element, and fuel filter element can be doubled to 500 hours using XCMG's proprietary technologies, so the maintenance periods are greatly prolonged.

A wide range of after-sales service system, quick-response rescue mechanism to ensure that you use at ease.

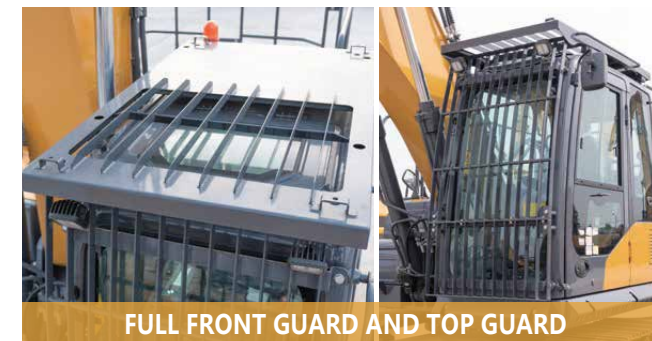


☎ 1300 BROOKS (276 657)
@ sales@brooksequipment.com.au
🌐 www.brooksequipment.com.au

BROOKS
EQUIPMENT



REFLECTIVE TAPE



FULL FRONT GUARD AND TOP GUARD



STANDARD REAR AND RIGHT SIDE CAMERAS



STANDARD LED LIGHTS



SUNROOF, SUNROOF CURTAIN AND FRONT CURTAIN



STANDARD BOOM AND ARM ANTI-DROP VALVES





AM/FM BLUETOOTH (HANDS-FREE) RADIO



POWERFUL AC



HANDRAILS AND GUARD RAILS



AUX 1 AND AUX 2 AUXILIARY PIPES



ACCESSABLE EMERGENCY STOP BUTTONS



REAR VIEW MIRROR



■ Engine

	XE215LC
Model	Cummins QSB7
Electric injection	√
Four strokes	√
Water cooling	√
Turbo-charging	√
Air to air intercooler	√
No. of cylinders	6
Rated power/speed (ISO)	135 kW/2,050 rpm
Maximum torque/speed	740 N·m/900-1,600 rpm
Displacement	6.7 L

■ Hydraulic system

	XE215LC
Main pump	Two piston pumps
Rated flow of main pump	2×240 L/min
Main safety valve pressure	34.3/37 MPa
Travel system pressure	34.3 MPa
Swing system pressure	28 MPa
Pilot system pressure	3.9 MPa

■ Oil capacity

	XE215LC
Fuel tank capacity	400 L
Hydraulic tank capacity	190 L
Engine oil capacity	23.7 L

■ Main performance

	XE215LC
Travel speed (H/L)	6.0/3.3 km/h
Swing speed	11.8 r/min
Gradeability	≤35 °
Ground pressure	47.1 kPa
Bucket digging force	165 kN
Arm digging force	120 kN
Maximum tractive force	184 kN

■ Standard

	XE215LC
Length of boom	5,680 mm
Length of arm	2,910 mm
Bucket capacity	1.05 m³ (Strengthened bucket)

■ Optional

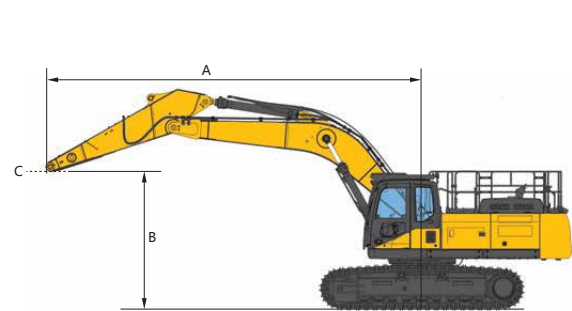
	XE215LC
Length of boom	-
Length of arm	-
Bucket capacity	1.2 m³ (Earthwork bucket) 0.9 m³ (Rock bucket)





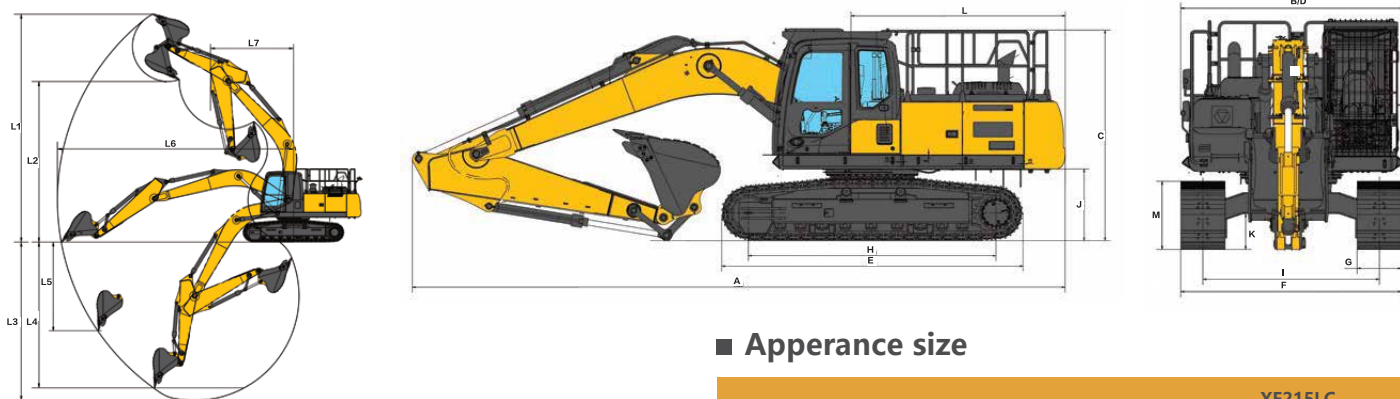
XE215LC

A	B	1.5 m		3 m		4.5 m		6 m		7.5 m		At Max.Reach	
7.5 m	kg							*5,050	4,102			*4,526	3,956
6 m	kg							*5,312	4,100			*4,120	3,078
4.5 m	kg							*5,191	3,958	3,934	2,910	3,629	2,657
3 m	kg					*6,862	5,208	*5,007	3,742	3,862	2,825	3,386	2,442
1.5 m	kg					6,553	4,847	4,852	3,562	3,785	2,736	3,294	2,351
Ground Line	kg			*9,781	7,213	6,411	4,680	4,742	3,433	3,717	2,655	3,354	2,386
-1.5 m	kg	*20,889	*15,991	*9,108	*7,292	6,370	4,631	4,698	3,381	3,720	2,659	3,585	2,562
-3 m	kg			*9,972	7,437	6,455	4,731	4,757	3,450			4,097	2,964
-4.5 m	kg			*10,155	7,650	*6,602	4,904					*5,304	3,928



: Over front
 : Over side or 360°

A- Reach from swing centerline to arm top
B- Arm top height above/below ground
C- Lift point
The mass of slings and any auxiliary, lifting devices shall be deducted from the rated load to determine the net load that may be lifted. Lift capacities are based on the machine standing on a firm, uniform supporting surface. The user shall make allowances for job conditions such as soft or uneven ground. The operator should be fully acquainted with the operator's manual and the operating safety manual furnished by the manufacturer before operating the machine.



Working scope

	XE215LC
L1 Max. digging height	9,620 mm
L2 Max. dumping height	6,780 mm
L3 Max. digging depth	6,680 mm
L4 Maximum depth cut for 2,240 mm(8 ft) level bottom	6,500 mm
L5 Maximum vertical wall digging depth	5,715mm
L6 Max. digging radius	9,940 mm
L7 Min. swing radius	3,530 mm

Appearance size

	XE215LC
A Overall length	9,625 mm
B Overall width	3,000 mm
C Overall height	3,100 mm
D Width of platform	3,000 mm
E Track length	4,450 mm
F Overall width of chassis	2,990 mm
G Track shoe width	600 mm
H Wheel base of crawler	3,650 mm
I Track gauge	2,390 mm
J Counterweight clearance	1,050 mm
K Min. ground clearance	486 mm
L Min. tail swing radius	2,890 mm
M Track height	925 mm



1300 BROOKS (276 657)
@ sales@brooksequipment.com.au
www.brooksequipment.com.au

BROOKS
EQUIPMENT



Standard and optional equipment

Engine

Engine model	Cummins QSL9
Emission stage	GB III
Automatic preheating	●
Fuel-water separator with water level instruction sensor	●
Fuel-water separator with heater(24 V)	○
Axial seal air cleaner	●
Air prefilter	●
The cooling assembly in 50 °C ambient temperature	●
Dust screen of radiator	●
Fuel marker	●
Oil-water quickly release device	●
Coolant heater (fuel type)	○
Hydraulic independent dissipate heat	●
Fuel filling pump	○
Air pressure difference instructor	●
Auto-idle	●

Hydraulic system

Breaker pipe	●
Quick coupler pipe	●
Thumb	○
Hydraulic oil ISO VG 46	●
Hydraulic oil ISO VG 32	○
Hydraulic oil ISO VG 68	○
Hydraulic joystick on the left and right	●
Gauge pressure monitor	●

Cab & Interior

Pressurized cab	●
Air suspension seat with heater	○
Control box on the left and right	●
Rain visor (It is not mounted when front upper protective net exists)	○
Front windshield divided 70/30 ratio	●
Double laminated windshield and other toughened windows	○
Sliding upper window on the door	●
Bi-directional air outlet air conditioner with defroster [automatic type][pressurization function]	●
Colour LCD with displaying warning information,filter / liquid replacement information and working hours	●
Double stereo speaker	●
Cup holder	●
Coat hook	●
Washable floor mat	●
Safety belt	●
High and low travel speed switch	●
One-key boost model	●
Sun visor	●
Top hatch	●
Multi-gear windshield wiper with intermittent feature	●
File package	●
Emergency exit on rear windows	●
Hammer for emergency escape	●

Lubrication system

Arm assembly	●
--------------	---

Undercarriage

Track guard located in left and right of track	●
2×9 bottom roller	●
2×2 upper roller	●
Tow ring on the bottom frame	●
Track with 2×49joint,600 mm (24") triple grouser shoes	●
Guard kits: bottom sealing plate of undercarriage, sealing plate of traveling motor	●

Work device

Boom 5.7 m	●
Arm 2.9 m	●
Strengthen bucket 1.05 m³	●

Electrical system

Battery 650 CCA(42accumulator)	●
70 A alternator	●
7.5 kW starter motor	●
12 V power port	●
5 V USB port	●
Emergency stop switch	●
Rightview camera	○
Rearview camera	●
DAB Bluetooth digital radio	○
Travel alarm with switch	●
Rotating beacon	●
Two front working light on the cab (LED)	●
Two working lights on the working device(LED)	●
Interior light in the cab	●

Security Configuration

Anti-hit beam	●
The lock of the cab door and cabin	●
Warning horn	●
The quick coupler button with warning	●
Isolation plate between engine and pump chamber	●
Battery disconnect switch	●
Safety handrail and pedal	●
Anti-skid plate/ anti-skid paste	●
Hydraulic safety locking lever	●
Left and right rearview mirrors	●
Counterweight rearview mirror	Counterweight camera
Anti-burst valve on the boom	●
Anti-burst valve on the arm	●
Roll over protective structure	●
Fall over protective structure	●
Upper protective net on front windshield	●
Lower protective net on front windshield	●

Counterweight

4.1 t counterweight	●
---------------------	---

● - Standard configuration ○ - Optional

Lubrication system

Arm assembly	●
--------------	---