

Specifications

Model	Z-80/60	
Measurements	US	Metric
Working height maximum*	84 ft	25.77 m
Platform height maximum	78 ft	23.77 m
Horizontal reach maximum	60 ft	18.29 m
Up and over clearance maximum	29 ft	8.83 m
Below ground reach	15 ft 10 in	4.83 m
A Platform length - 8 ft / 6 ft	3 ft / 2 ft 6 in	0.91 m / 0.76 m
B Platform width - 8 ft / 6 ft	8 ft / 6 ft	2.44 m / 1.83 m
C Height - stowed	9 ft 10 in	3.00 m
D Length - stowed	37 ft	11.27 m
E Length - transport	37 ft	11.27 m
F Width	8 ft 2 in	2.49 m
G Wheelbase	9 ft 4 in	2.85 m
H Ground clearance - center	12 in	0.30 m

Productivity

Lift capacity	500 lb	227 kg
Platform rotation	160°	
Vertical jib rotation	135°	
Turntable rotation	360° continuous	
Turntable tailswing - riser up	3 ft 10 in	1.17 m
Turntable tailswing - riser down	7 ft 4 in	2.24 m
Drive speed - stowed	3.0 mph	4.83 km/h
Drive speed - raised**	0.68 mph	1.1 km/h
Lift speed to full height	76 sec	
Gradeability - 2WD - stowed***	30%	
Gradeability - 4WD - stowed***	45%	
Tilt sensor activation	front to back: 4.5° and side to side: 4.5°	
Turning radius - 2WS inside	14 ft 6 in	4.42 m
Turning radius - 2WS outside	24 ft 6 in	7.47 m
Turning radius - 4WS inside	7 ft	2.13 m
Turning radius - 4WS outside	15 ft	4.57 m
Controls	12 V DC proportional	
Tires	18-625 NHS	

Power

Power source	74 hp (55 kW) Deutz turbo diesel, Tier 4f, 2.9 L 58 hp (43.25 kW) Perkins turbo diesel, Tier 4f, 404D-22 70 hp (52.2 kW) GM gas/LPG 3.0L	
Auxiliary power unit	12 V DC	
Hydraulic tank capacity	45 gal	170 L
Fuel tank capacity – diesel machines	35 gal	132 L
Fuel tank capacity – gas/LPG machines	30 gal	114 L

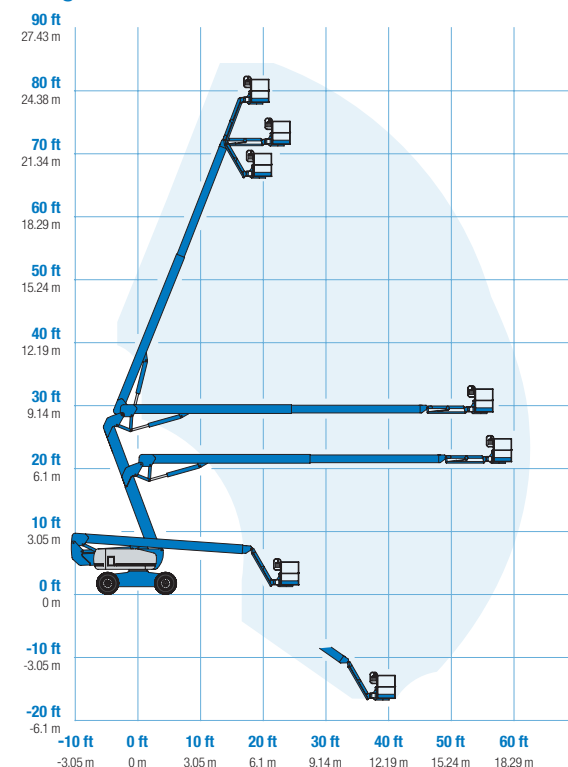
Weight****

2WS	35,925 lb	16,295 kg
4WS	37,525 lb	17,021 kg

Standards Compliance

ANSI A92.20, CSA B354.6, EN 280, AS 1418.10

Range Of Motion Z-80/60

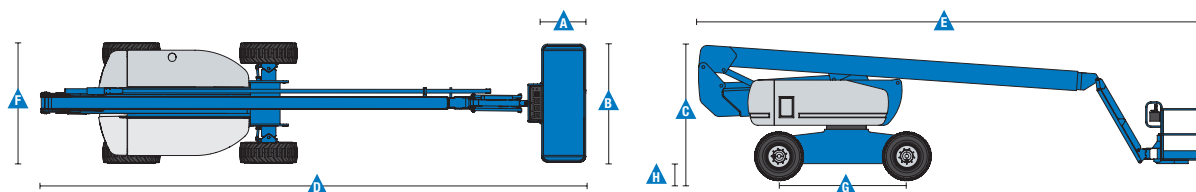


* The metric equivalent of working height adds 2 m to platform height.
U.S. adds 6 ft to platform height.

** In lift mode (platform raised), the machine is designed to operate on firm, level surfaces only.

*** Gradeability applies to driving on slopes. See operator's manual for details regarding slope ratings.

**** Weight will vary depending on options and/or country standards.



Features

Standard Features	Easily Configured To Meet Your Needs	Options & Accessories
Measurements <ul style="list-style-type: none"> 84 ft (25.77 m) working height 60 ft (18.29 m) horizontal reach 29 ft (8.83 m) up and over clearance Up to 500 lb (227 kg) lift capacity Productivity <ul style="list-style-type: none"> Self-leveling platform 160° hydraulic platform rotation Proportional joystick controls Hydraulic oil cooler Drive enable AC power cord to platform Horn Hour meter Tilt alarm Descent alarm 360° continuous turntable rotation Positive traction drive Two speed wheel motors Four steering modes: front, rear, crab and coordinated (with 4WS option only) Lift Tools™ Work Tray Entry toeboard Lift Connect™ Telematics Lift Guard™ Contact Alarm Power <ul style="list-style-type: none"> 12 V DC auxiliary power Anti-restart engine protection Auto engine fault shutdown On board full diagnostic and engine monitoring display Dual battery 	Platform Options <ul style="list-style-type: none"> Steel 8 ft (2.44 m) tri entry with side swing gate (standard) Steel 6 ft (1.83 m) dual entry with side swing gate Jib <ul style="list-style-type: none"> 6 ft (1.83 m) jib boom Engine Options <ul style="list-style-type: none"> 70 hp (52.2 kW) GM gas/LPG 74 hp (55.18 kW) Deutz turbo diesel, T4f* 58 hp (43.25 kW) Perkins turbo diesel, T4f* Drive/Steer Options <ul style="list-style-type: none"> 4WD (standard) 2WS (standard) 4WS Axle <ul style="list-style-type: none"> Active oscillation Tire Options <ul style="list-style-type: none"> Rough terrain foam-filled (standard) Rough terrain non-marking foam-filled 	Productivity Options <ul style="list-style-type: none"> Lift Guard Platform Mesh - Half Lift Guard Platform Mesh - Full Lift Guard Platform Mesh - Screen (8ft platform only) Platform top auxiliary rail Welder package Welder Ready package Air line to platform Specialty hydraulic oil (cold weather, fire resistant, or biodegradable) Hostile environment kit Deluxe hostile environment kit Aircraft protection package (6 ft platform only) Thumb rocker steer Tool tray Pipe cradles (pair) Alarm package Lockable platform control box covers Work light package Operator Protective Structure** Fall Arrest Bar Lift Tools Access Deck* Lift Tools Expo Installer* Power Options <ul style="list-style-type: none"> AC generator packages (110V/60Hz - 220V/50Hz, 3000W) Cold Weather Packages Diesel catalytic scrubber muffler LPG tank only, steel, 33.5 lb (15.19 kg) capacity Positive air shut off system (Deutz engine only)



* Also available as Tier 4i in limited regions
** Available through aftermarket parts only

BROOKS
ACCESS



☎ **1300 BROOKS** (1300 276 657)
@ sales@brooksaccess.com.au
🌐 **www.brooksaccess.com.au**