

YOUR FREE COPY

# THE Eneabba

AUTUMN 2023 ISSUE 12

**BROOKS**  
TRANSPORT

*'Better being  
with Brooks'*

# Together We Roll

**BROOKS COLLABORATES  
WITH OLIVE BRANCH ENTERPRISE**



**BROOKS**  
HIRE

**BROOKS**  
ACCESS

**BROOKS**  
AIRWAYS

**BROOKS**  
EQUIPMENT

**BROOKS**  
TRANSPORT

**BROOKS**



# The story of Eneabba



When 23 year old Doug Brooks recognised an opportunity to hire out equipment to the mining industry in WA in 1979, he knew it was something he had to pursue. Doug scrambled together every dollar he had, to purchase two disassembled compressors, with the remainder of the bill being settled by bankcard. He opened 'Brooks Hire Service' and ran the business from a shed in the remote WA town of Eneabba. All the while Doug was living in a 'humpy' at the rear of the shed. There were many that warned him of the difficulty of starting a new business in a very competitive industry, but Doug was determined and it was only a matter of time before he was turning a profit on his compressors. What started as two compressors on hire, soon turned into twelve pumps on hire, but the turning point came when Doug purchased his first piece of mobile equipment, an eight tonne JEC crane. There are many great stories that came out of that shed in Eneabba. It was the foundation of Brooks Hire and the place where all of the 'hard yards' were done. Eneabba is remembered as the birth place of Brooks Hire Service.

## ACCESS EQUIPMENT FOR SALE



FINANCE AVAILABLE

☎ 1300 BROOKS (276 657)  
✉ sales@brooksaccess.com.au  
🌐 brooksaccess.com.au

**BROOKS**  
ACCESS

Disclaimer: The repayment estimates are provided by Quokka Finance Pty Ltd. They are for illustrative purposes and do not constitute a quote, loan application, or offer of a Chattel Mortgage, Hire Purchase or Lease Loan. The estimates are based on a Chattel Mortgage where the asset is predominately for business purposes and the amounts and rate quoted at the date of enquiry, are subject to change and paid monthly. The estimates do not consider your personal needs and financial circumstances and excludes any fees and charges payable. Actual repayments amounts may vary depending on the interest rate offered and determined by the customer profile at time of application. While every effort has been made to ensure the material contained on this page is factually correct, this figure should not be relied upon.



## From the MD...

It's been a busy start to 2023, and I feel it's important to begin my column by thanking all of Brooks' hard working staff members for keeping this well oiled machine rolling.

In February, we celebrated our Apprentices and Trainees, of which, we have 38 around Australia. I started my own working life as an apprentice, and it's been an important part of Brooks' culture to build Australia's workpool by giving young people the chance to grow a career. Of course, this couldn't happen without our experienced trades people who dedicate their time to pass on their valuable knowledge and experience to the next generation.

In March, we celebrated International Women's Day. The industry that we work in has, in the past, been a very male dominated one. We are proud to support our female workers, giving them opportunities for promotion and growth. We can proudly say that 40% of our senior managers are women.

Across the board, all Brooks divisions have been achieving great things. Brooks Airways has been consistently running FIFO and charter flights for the mining, oil, and gas industries. The Site Services department has been exploring and promoting green energy solutions with great success. Brooks Access' sales department is booming (excuse the pun), and Brooks Equipment has also achieved record breaking sales results, making Sany the Top 3 selling crawler excavator in WA, and being named Genmac's Top Ten Distributor worldwide!

So, you might be wondering, with all of this growth, what's next? Rest assured, we're only just getting started. We are working on some new and exciting plans for the future. Keep your ear to the ground, and your eyes on the Eneabba.

Stuart Brooks  
Managing Director

# THE Eneabba

AUTUMN 2023

# contents



**03 Together We Roll**  
Brooks collaborates with Olive Branch Enterprise



**05 For the Long Haul**  
Rentco looks to the future



**07 Streets of Gold**  
Gencon Civil grades the Goldfields



**09 A Strong Tonic**  
Constructing a culture of innovation



**11 Way Out West**  
Komic works the Wheatbelt region



**13 Plant Assessor On The Job**  
Machinery safety and uptime technology



**15 More Power to You**  
Generating energy efficiency for the whole site



**17 Sold on Success**  
Access sales boom higher



**19 Brooks Makes International Top 10**  
Genmac distributor awards

## BROOKS

**CONTACT DETAILS**  
Brooks Hire Service Head Office

30 Coulson Way  
Canning Vale WA 6155

Phone: 1300 276 657

Email: sales@brookshire.com.au

www.brookshire.com.au

The Eneabba is a Brooks Hire Service Pty Ltd publication. All photographs and written articles remain the property of Brooks Hire Service Pty Ltd. No reproduction in whole or in part of this publication is allowed without the permission of the Managing Director.

If you would like to make a submission, please email [marketing@brookshire.com.au](mailto:marketing@brookshire.com.au)

Digital Distribution 10,902  
Printed Copies 5,000



**20 FIFO Flights Take Off**  
Brooks Airways services the mines



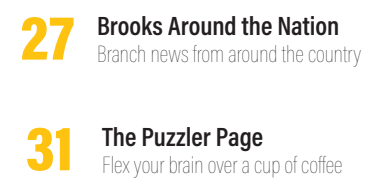
**21 Creating Civil Diversity**  
Oaks Civil empowers Aboriginal people



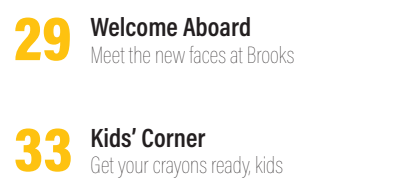
**23 New Machines**  
Take a look at what's been rolling in



**25 Events & Exhibitions**  
Out and about with Brooks



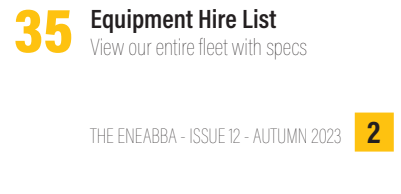
**27 Brooks Around the Nation**  
Branch news from around the country



**29 Welcome Aboard**  
Meet the new faces at Brooks



**31 The Puzzler Page**  
Flex your brain over a cup of coffee



**33 Kids' Corner**  
Get your crayons ready, kids



**35 Equipment Hire List**  
View our entire fleet with specs



# Together We Roll

## Brooks collaborates with Olive Branch Enterprise

Recently, Brooks commissioned the services of talented Indigenous artist, Sister Danielle Champion from Olive Branch Enterprise, to design an artwork for our new Volvo prime mover. This marks the beginning of a relationship between the two entities.

### What is Olive Branch Enterprise (OBE)?

Olive Branch Enterprise (OBE) is a 100% Aboriginal owned business, founded in Kalgoorlie WA, by the family reigning under Timothy Champion Senior.

The Directors of OBE are James Champion (Chairman), Noelene Walley (Secretary/Director), Bruce Champion (Director), Fiona Champion (Director), and Felicity Champion (Public Officer/Director). Management is held by Simon Shin (Chief Executive Officer), Danielle Champion (Chief Operations Officer), and Jonathan Quay (Chief Strategy Officer).

Though private and independent, the elders/directors are members of the Marlinyu Ghoorlie Claim Group which come and represent a large part of the Goldfields region/country. Some elders and directors come from other country regions which our family represent through marriages and original birth places.

### How was it started and what services do you offer?

Olive Branch Enterprise was registered July 2019 with the ambition to eradicate and decrease criminal activity; drugs, sexual and alcohol abuse; unemployment rates; homelessness; incarceration rates, and eradicate suicide. We do this by improving, increasing, and bringing light to educational pathways, career/employment pathways and entrepreneurial pathways for all members of the community and OBE.



Simon Shin (OBE CEO), Sister Danielle Champion (OBE COO), and Lenore Brooks (Brooks CBO)

We are an Aboriginal Mining Service Provider/Contractor providing full comprehensive solutions for mining organisations.

The services that OBE offer mining companies, are:

- Engineering to planning
- Mine Closure Programs (mineralisation/land characterisation and environmental engineering)
- Civil Operations / Constructions (earthworks / operations / engineering fields / road development and maintenance)
- Product Supply (Workwear and PPE / Plant Machinery / Fleet Machinery)
- Venue Management (camp construction / catering / laundry / housekeeping / general maintenance)
- Aboriginal Labourhire (white and blue collar)
- Rehabilitation (seeds / civil earthworks / engineering – caring for country)
- Haulage plus plant machine and fleet hire lease

We partner with key industry experts (corporations/organisations) in the field of interest - such as Brooks Hire - and commercialise opportunities on country in favour of contracts that are available with (mainly) mining companies.



### At the centre of OBE is the Champion Family – can you tell us about your family involvement?

The Champion family have lived and reigned from the Goldfields Country for hundreds of years, walking country, and caring for country. Olive Branch Enterprise has endorsements and engagements with 14 other Western Australian regions for success, so that all Aboriginal Elders, community members, and generations to come, can share the fruits of our values, goals, and direction.

### OBE Chief Operations Officer, Sister Danielle Champion is also a talented artist. How does Sister Danielle insert her art into the services that OBE provides?

Sister Danielle Champion has built a great reputation with her artwork within the Goldfields and Metropolitan region. With this reputation, it has been a constant request that her works be combined with some of the services we provide – especially the fleet or plant machinery department. She is very specific, cautious, and dedicated to delivering the best artwork representation through stories and designs.

Brooks asked Sister Danielle to design a piece that would compliment our existing branding, and we were ecstatic with the artwork that she produced. The piece is called 'The Seven Sisters', and has a special Indigenous story behind it.

The Seven Sisters are the seven daughters which are named, Emu Red Tailed Black Cockatoo, Parrot, Pink and Grey Galah, Wedge Tailed Eagle, Honeyeater, and Bluebird.



They travelled on a journey to find their father but they cannot seem to find him after many years of walking, shouting and searching. Exhausted, the seven sisters end up in the desert with no water or proper food to help them on their journey so therefore they die. Later during the year, their father finds them instead, laying in the desert, and in sorrow he buries his daughters in a very long ritual, vowing to never leave their daughters side, ever again. The fathers heart.

Sister Danielle Champion was also responsible for designing a very prominent piece for Northern Star Resources last year.



### How did CEO Simon Shin, come to be involved with OBE?

Simon Shin started Olive Branch Enterprise with the Elders/Directors and Timothy Champion Senior in 2019. Being, as most would say, adopted into the family, he has learnt and journeyed with Timothy Champion Senior and James Champion (Chairman of Olive Branch Enterprise) to truly feel, see, and be one with the Aboriginal Country. With a passion to eradicate suicide, his skills, experience, and drive for success was what was needed for the Champion Family in the Goldfields region. In such a cut-throat industry, through his faith in Christ, and 'never give-up' attitude, Simon has pushed and achieved great results with partners, clients and other Aboriginal Elders in Western Australia, building a reputation that challenges all commercial businesses, nationally and internationally to challenge the status quo, giving Olive Branch Enterprise an equitable chance.

### What goals does OBE have for the future?

Olive Branch Enterprise aims to succeed in the following over the next five years:

- Own and operate 7 mines (majority owned)
- Win 7 mining service contracts
- Grow up to 55 employment opportunities within the Aboriginal family/community
- Provide 45 scholarships to educational pathways for the Aboriginal family
- Grow our OBE team to 50 employees
- Help fund and/or start 20 SME businesses for Aboriginal family members
- Win Telstra Business Awards and other Business Awards

Brooks is proud to support Olive Branch Enterprise. We have immensely enjoyed our involvement with the organisation, and wish them a strong and prosperous future.





# For the Long Haul

Bob and John Shier, Owners and Founders of Rentco

Photo credit: Business News and Photographer David Henry.

## Rentco Looks to the Future

Founded in Western Australia in 1994 by brothers Bob and John Shier, Rentco Transport Equipment Rentals has quickly expanded their trusted brand throughout Australia. Since the beginning, Rentco has adopted a "can-do" business ethos and a willingness to adopt new and innovative transportation equipment which has now positioned the Australian family-owned business as the leading supplier of heavy vehicle transportation rental equipment throughout Australia.

Rentco's vision drove rapid and continuous expansion throughout the early years, setting up new depots in Darwin, Townsville, Brisbane, Sydney, Melbourne, and Adelaide. Now employing more than 100 highly trained staff throughout the network, some 30% of our staff have completed more than 10 years' service which underlines the quality business conditions and management in place.

To overcome a significant shortage of experienced and qualified tradespeople, Rentco embarked on an apprenticeship program of both school leavers and mature apprentices to fill this void: the initiative has been an overwhelming success.

Lance Jones and Jarrod Dennis both completed apprenticeships with Rentco and now hold positions as Branch Managers in Darwin and Sydney respectively whilst, Kirk Shier our Perth Workshop Manager, also completed his apprenticeship with Rentco. Today, most Rentco branches have apprentices across many disciplines including Fabrication, Mechanical, Auto Electrical and Spray Painting.

Whilst retaining our apprentices after graduation is key to our success, some of our new tradespeople do choose to pursue other opportunities or follow the lucrative offerings of FIFO employment, but overall, Rentco prides itself on high retention of employees post-graduation.

Regardless of being retained, Rentco continues to play its part in the development of highly skilled tradespeople that are required across Australia. Rentco prides itself on being an employer of choice, offering its people a career path through apprenticeships, and internal training and development.

Rentco has long been known for providing Australia's largest fleet of heavy-duty rental trucks and trailers, but it is now much more than just prime movers and semi-trailing equipment. To meet the varying commitments of its customers, Rentco has been actively keeping pace with the ever-changing needs of transport companies across the nation, one of these directions is the Terminal Tractor (Tug Truck).

Whether it's safety, efficiency, or a combination of both, Australian freight companies, distribution centres, and warehouses heavily rely on the latest, up to date equipment and processes to keep ahead in what have been some very challenging years. A Terminal Tractor provides its user a comfortable, airconditioned space with excellent vision and well positioned controls to allow the efficient movement of loaded or unloaded trailers around the yard or from dock to dock. These vehicles can be restricted to any speed and come with a full range of functionality that you would expect to find in a mainstream prime mover.

Rentco has a variety of models to suit varying needs, single and bogie drive units up to 90T, road usage permits, with an opportunity to add some customised extras such as air ride seats, heated mirrors and radio communications to ensure the operator has the best possible equipment to carry out his role safely.

The unique design allows the operator to stay within the vehicle and move to the trailer without having to step down on the ground. The hydraulic turn table allows the operator to lift the trailer up instead of winding the legs, giving you a very fast hook up and detachment process without leaving the truck. The net result is less time, less injuries, and less damage.

The Terminal Tractor options are vast: Rentco has most makes and models in the fleet and a highly trained team of Australia's best technicians, managed entirely by Rentco staff on the ground in each state. A real advantage is our 24/7 dedicated service support by Rentco employees that keep our equipment operational with absolute minimum down-time. The Terminal Tractors can operate on roads, ports, distribution centres and yards or just about anywhere a prime mover and semi-trailer has access.

As with most businesses in Australia today, Rentco is actively looking for ways to reduce its carbon footprint and offer its customers carbon reduction advantages as well. Rentco is in the advanced stages of negotiating a large order of electric tugs to add to the rental fleet, offering its customers the carbon reduction advantages that come from decreasing greenhouse gas emissions: a topic that continues to gather momentum and one we are proud to be part of for both Rentco and its clients. This is a brand-new direction for Rentco and for transport in Australia and something that our team are very excited to deliver with the first units due in July this year. With stock on hand in every state, this new direction for Rentco has been received with great positivity and works side-by-side with our huge range of prime movers, semi-trailers, and rigid fleet.

Find out more at [www.rentco.com.au](http://www.rentco.com.au)

Rentco is in the advanced stages of negotiating a large order of electric tugs to add to the rental fleet.





# Streets of Gold

## Gencon Civil Grades the Goldfields

This quarter, we caught up with Jim London from Gencon Civil. Gencon Civil has been a long-term client of Brooks Hire, and has become a very well respected name in the Goldfields region of Western Australia.

### Tell us a little bit about Gencon Civil – When were you established, and what do you do?

Jim London started Gencon Civil in October 2011, as a Sole Trader. The first piece of equipment was a 140H Grader. To meet the clients' needs, an Iveco prime mover and drop-deck float were then purchased. In 2013 Gencon upgraded from its Sole Trader status, hiring staff to fill Mobile Plant Operator positions. Over the following years, Gencon Civil has increased its fleet of plant to meet requirements.



Through hard work, exceptional service, and Jim's extensive expertise Gencon Civil has grown into a dependable and sought-after company, offering a range of road construction and earthwork services to meet the diverse needs of our clients. Gencon Civil's experienced team has the expertise to handle all aspects of road construction, from site preparation and grading as well as the installation of signs, linemarking, and other road safety features.

### Our values:

- G**uaranteed Quality
- E**xpertise & Experience
- N**o-Compromise on Safety
- C**ustomer-Centred
- O**ptimal Solutions
- N**urturing Relationships are at the core of everything we do.

### Gencon Civil is located in the Goldfields region of Western Australia. Tell us about the region, and the type of customers that you service.

Gencon Civil's home base is in Kambalda West (55km South from Kalgoorlie). Kambalda is located on the edge of Lake Lefroy, an expansive 512km Salt Lake and within the Great Western Woodlands, ensuring there are plenty of adventures to be had.

Gencon Civil's client list, includes:

- Local Government – Shire of Coolgardie, City of Kalgoorlie Boulder, Shire of Menzies, Shire of Leonora, Shire of Dundas
- Mining & Resources – Gold Fields Australia (St Ives Gold), Evolution Mining, St Barbara, Mincor, Northern Star Resources, Norton Gold Fields, Mining Plus, and many more
- Other Business – McNally Resources, Highway Construction, WBHO, DM Roads, etc.
- Main Roads Western Australia



### What has been your most challenging project to date and why?

Two projects stand out.

Yarri Road was a 5-month project completed in early 2018. Unfortunately, not long into the project, the Kalgoorlie region received a one-in-100-years rain event. In one afternoon, temporary side roads were completely washed away, a lake within our work area went from completely dry, to full, with amazing marine life popping up and distracting the work crew.

Due to the delays caused from the intense weather, Gencon Civil was required to rapidly increase our crew and hire in extra plant, so other works booked could commence on time, and the Yarri Road works could be completed.

The second project, throwing repeated challenges to Gencon Civil's Management team was completed in the Mid-West Gascoyne mid-2021. Working on the Main Roads Western Australia (MRWA) Network, our crew were travelling the whole of the Mid-West Gascoyne. As these works followed the destructive Cyclone Seroja rampage, accommodation was very hard to come by. The crew would be separated over any available accommodation, often having to travel over 150km each way, daily. At one stage, swags and sleeping bags were purchased, and plans made for some members of the crew to sleep in the prime movers.

### What project are you most proud of and why?

Kambalda Airport Upgrade comes to mind as this project has benefited the local community and businesses in allowing larger aircraft to use the facility, making it easier for FIFO workers to commute between Kambalda and Perth.

The project involved tripling the size of the unsealed taxiway and apron to allow two larger Q400 aircraft to park on the apron. Previous to the upgrade, the airport could only facilitate one aircraft at any one time. The upgrade to the taxiway also involved applying a bitumen surface and linemarking. As part of the requirements for the larger aircraft, the turning nodes were also required to be upgraded to a sealed surface.



We look forward to being involved in stage 2 of the works which will be to upgrade the runway to a sealed surface which then allow jet aircraft to use the airport.

### What are your plans for the future?

Gencon Civil's plan is to continue to provide the highest quality road construction and earthwork services in the Goldfields region. Our aim is to continue to grow the business utilising as much local labour and resources as possible, while navigating complex projects and overcoming challenges, with a focus on delivering results and exceeding our clients' expectations. Gencon Civil is dedicated to these values and will continue to work tirelessly to ensure our clients receive the services they need, to succeed.

Gencon Civil would like to take this opportunity to thank Brooks Hire for their continued support over the last 12 years. The Brooks Hire Kalgoorlie Branch has provided a diverse range of mobile plant and heavy equipment to ensure Gencon Civil can complete works on time, and in budget. The Brooks Hire Service team have always been quick to respond and will ensure all plant is operational in a timely manner. In the last year, it has greatly assisted our team utilising Brooks' light vehicle hire, and Brooks Transport. Gencon Civil looks forward to continuing working alongside each other, into the future.

For more information on Gencon Civil, visit [www.genconcivil.au](http://www.genconcivil.au)







# A Strong Tonic

## Constructing a Culture of Innovation

The Pilbara is one of the most remote, mineral rich regions in Australia. Located in Newman, some 15 kilometres north of the Tropic of Capricorn, we caught up with Andrew Dobson, Manager of Tonic Group.

### Who are Tonic Group and what services do you offer?

Tonic Group commenced operations in April 2020 to service the mining industry of Western Australia. The initial concept was to provide a service which offered a more personal approach to how we interact with our clients. As a new start-up, the biggest challenge has been the initial engagement to new clients which, ideally, had to be different. Tonic Group's core value is innovation.

This was overcome by the combined 80 years of construction experience and a new way of thinking for the Directors. The business was a partnership and the beginning of new opportunities. The initial focus was taking a simple project concept to a client and prove through innovative thinking, superior construction techniques, and quality output, that Tonic Group could execute the project to a level of expectation that you would normally expect from a much larger scale budget.

From this, the company has grown exponentially, providing modern solutions for both basic and complex projects. Tonic Group provides labour solutions, plant and equipment supply and technical proposals, which continue our model of innovation – How to be different!

### Tonic Group was founded in 2020, the same year that WHO declared a global pandemic. How did this affect the establishment of your business?

The global pandemic had an impact on many facets of not only the mining industry, but society in general, and Tonic Group were not immune. The mining industry placed many controls on how construction contractors were required to operate, and our team of professionals worked together to ensure we developed the required procedures to enable our works to continue. The team looked to local communities to provide labour support to negate the impact of flight costs and availability issues.

Procurement constraints driven by rise in global commodities had more of an impact as the world moved through the peaks in 2021/22 and can be seen with the cycle of builders collapsing. Tonic Group concentrated on supporting our key clients, offering the same service without over promising on targets, and this was key to our survival.

The global pandemic has impacted all Australians, but I think it is the strong Australian spirit that sets us apart from the rest. Tonic Group are part of that fighting spirit and we intend to continue our focus on supporting local communities, providing innovative solutions to our clients, and growing our team of professionals.

### What has been your most challenging project to date, and how did you overcome those challenges?

Tonic Group completed the bulk earth works and civil remediation of an airport in a remote location just outside Southern Cross. This project required the completed rectification of embankments adjacent to a 1.2km runway caused by excessive storm water damage. The difficulty faced was the continued operation of the facility and the short time frame allocated by the client to bring this asset back to an appropriate standard. Our teams were given 34 days to remove, import and lay approximately 11,000m<sup>3</sup> of fill material to rectify this damaged asset.



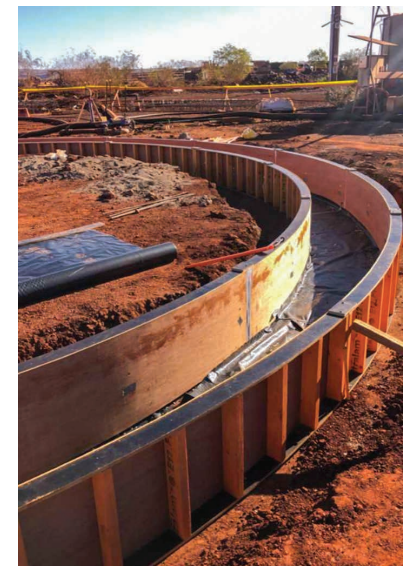
Tonic Group overcame this logistical challenge by partnering with local businesses, local government, and companies which gave us the competitive advantage over other contractors. Our professional support, through our skilled administration team, were able to mobilise a team of highly skilled specialists and equipment within 4 days, to site. This rapid mobilisation process highlighted to our business the importance of working with local communities and business partners to ensure project success and our clients' expectations are fulfilled.



### What project are you most proud of and why?

To commence operations in such a challenging market and to continue to see growth in not just the short term, but over a sustained period, is testament of the drive our team have in making the right business decisions which are key to our growth. Tonic Group pride ourselves on our core values which enable us to deliver a competitive product to each of our clients.

The project, which is a standout for the company, is a small design and construct package for a dilapidated 4t bridge on a mine site in the Pilbara region of Western Australia. The bridge's original design capacity was 20t but due to years of wear and tear it was derated by Engineering to ensure the safety of operational teams. Tonic Group was enlisted to produce a solution to remediate and reinforce the bridge deck back to its original design capacity whilst limiting the shut down time of the asset.



Our team worked alongside product manufacturers to provide a quick and effective solution to this issue with shut down time on the asset being reduced to only 10 days. This resulted in the end product not only meeting the requirements of the client but exceeding their expectations with the asset now brought back up to its original design rating and safe for years to come.

### How does Tonic Group differentiate from your competitors?

Tonic Group is a fresh and dynamic construction company which was established in 2020 and founded on a cumulative 80 years of industry experience. The company's focus is delivering client specific solutions to enable the cost effective and safe delivery of projects in the mining sector. Tonic Group offer a multi discipline approach to project execution to ensure our clients have full-service delivery of their project needs.

Specialising in civil, building, structural, and electrical construction has enabled Tonic Group to offer our clients a competitive solution to their project needs. Tonic Group demonstrate proven capability to deliver projects in operational sites while ensuring the safety, quality, and schedule is maintained throughout the execution phase.

Tonic Group's leadership team represent a change to industry norms with our focus on equality and diversity at the forefront of each decision made. Our intention is to provide a service to our clients ensuring our principals are always maintained without compromise. Tonic Group are supportive of innovation and change, leading to a cleaner future for our children and their children.





# Way Out West

## Komic Works the Wheatbelt Region

**Tucked away in the tiny wheatbelt town of Moora, Western Australia, one small business is doing big things.**

Komic Contracting & Earthworks is a true family run business in every sense of the word. This quarter, we caught up with the Komic team to talk about their business, and the challenges of working in such a remote location.

**Like Brooks Hire, Komic Contracting & Earthworks is a family business. Tell us about the people behind the business, and how it all started.**

Founder of Komic, Mike Mclean grew up on his family's dairy farm in Metricup, a small rural town in the Southwest of WA. He ran the farm with his father for many years until, in 1994, the decision was made to move the farming enterprise from dairy in the South West, to wheat, sheep, and cattle, in the Wheatbelt region.

During this time, Mike started a successful bulk transport business which was later sold to continue his farming pursuits. Circumstances led to the purchase of earthmoving equipment for a brief stint of dry hiring to the gas industry in the state's north. Then, in 2013, Mike was persuaded by friends and past clients to bring his machines back to Moora. There was a demand for dam clearing in the area, and Mike, with his vast experience in maintenance and operations, was highly sought after. That is how Komic Contracting and Earthworks began.



Working alongside Mike, is his wife, Naomi. Affectionately known as the 'Ministry of Finance', Naomi has over 30 years experience in business management and bookkeeping. Their daughter, Stacey, helps Naomi run the administration side of the business. Naomi has also been known to join the boys onsite when an extra pair of hands are required.

Rounding out the family business is Mike and Naomi's son, Dylan. Dylan joined his parents in the business in 2017. He is a qualified Light Vehicle Mechanic, and holds a variety of plant operator tickets. Dylan's abilities and expertise far out weigh his age of 29.

Like father, like son, both Mike and Dylan are problem solvers with a "can-do" attitude and an unwavering eye for detail. Their skills have seen Komic Contracting and Earthworks bloom from a short term 'stop gap' business, into a flourishing family operation.



**What are Komic's main services, and what areas do you cover?**

Our main area of operations are from Gingin, out to Kalannie, up to Eneabba, and all along the coast of the Wheatbelt region of WA. This region is mainly used for pastoral farming of sheep and agriculture, and is the source of nearly two thirds of the state's wheat production, half of its wool production, and the majority of its lamb and mutton, oranges, honey, cut flowers, and a range of other agricultural and pastoral products.

We cover anything from dam and soak clearing, to drainage and trenching, tree and rock removal, gravel and roadworks, and anything in between.



**Many of your projects are remote. What challenges does this present, and how have you overcome them?**

The remoteness of our operations often means that we are working away from our base. Accommodation is a big issue, however, we like to support the local accommodation and food outlets within the area.

Mobilisation of our plant and equipment is also a challenge. We have just acquired a new quad low loader, and load share dolly, which makes this task much quicker and easier.

**Mike is also a fully qualified pilot. How do you use this skill to service Komic's clients?**

Being a pilot comes in really handy when liaising with clients in remote locations. Flying to remote site meetings makes project management faster and easier. Mike's aircraft is a two seater Czech Aircraft Works SportCruiser which is capable of cruising at 214km, and can land at remote airstrips, making it the ideal method for remote transportation.



**Do you have any plans to expand in the future?**

Our small family business has grown from a one man operation in 2013, to 5-10 man in 2022/23. We will continue to expand as the need arises.

If you're in the Wheatbelt region, and require any type of earthworks, call Mike Mclean from Komic Contracting and Earthworks on 0427 549 007 or go to [www.komic.com.au](http://www.komic.com.au).

**"Our aim, is not to be the biggest, but to be the best."**

MIKE MCLEAN, OWNER OF KOMIC CONTRACTING AND EARTHWORKS







# Plant Assessor on the Job

## Machinery Safety and Uptime Technology

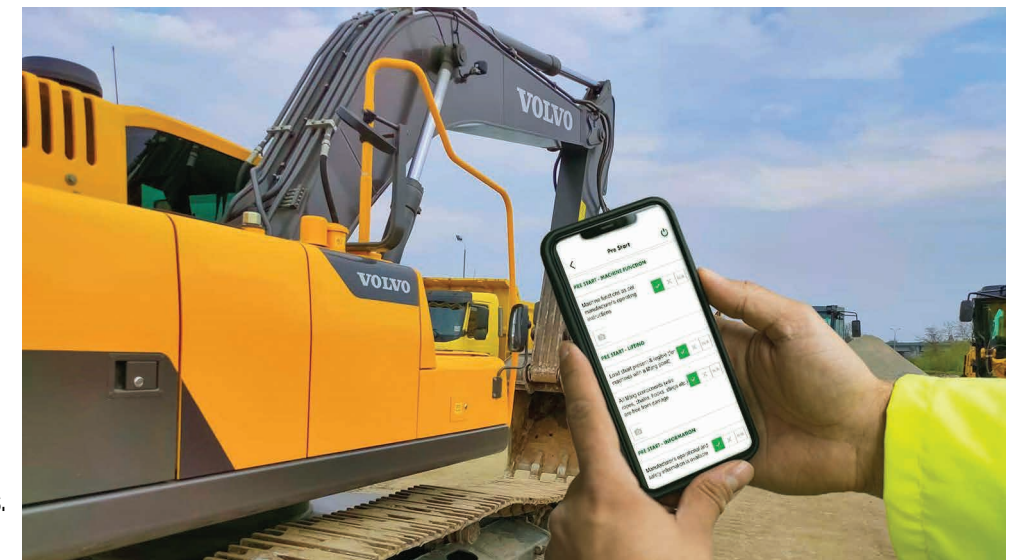
Machinery safety and uptime are two critical components for PCBU's whose work involves managing machinery and the safety systems they entail. There are many things to consider, such as ensuring machinery is compliant with Acts, regulations, standards and codes of practice, keeping workers safe, meeting project deadlines, and ensuring machines are up to the job. All of these tasks are complex and time consuming, but thanks to technology, they are becoming much simpler. It's now so much easier to maintain machinery and worker safety on site thanks to technological advancements that, as a result, companies are increasing efficiency, productivity, and uptime. We explore just how machinery safety technology can boost machinery uptime.

It's amazing how much technology can improve safety. Consider digitisation, for example, which has made it much easier to complete machinery risk assessments and pre-starts. If you consider paper-based risk assessments and pre-starts, they are time consuming, and your machinery operators could be at risk while the paper-based results are being analysed by a human. However, this issue can be eliminated through technology.

Digital risk assessments and pre-starts immediately identify the hazards and issues related to a machine, and instantly tell you to stand it down or fix it if needed. Plant Assessor, for example, uses a unique technology called the Machinery Compliance Engine (MCE) to complete risk assessments accurately and quickly. The MCE is a sophisticated piece of technology developed to automate the identification of machinery hazards, set risk ratings, and provide applicable control measures per referenced legislation. All you need to do is pick a machine, complete some simple questions, and let the MCE create your comprehensive risk assessment. This type of technology simplifies the risk assessment process, removes decision making subjectivity around the level of risk a hazard poses and controls that need to be implemented, reduces inconsistencies, better mitigates risk, and reduces the risk of workers being injured while on the job, once controls are actioned.

Documentation is also easier to access and share with others thanks to technology, making safety management easier. Documents such as safe operating procedures (SOPs), for example, can be easily accessed through digital libraries.

A worker can grab their device and easily view these critical safety documents with the click of a button before undertaking a high risk task. Also, documentation, such as risk assessments and pre-starts results, can be shared instantaneously thanks to technology. You can immediately inform your workers about equipment that is unfit for use, allowing for machines to be immediately stood down, and reducing the risk of injury to workers.



Technology has also made plenty of tasks easier for us, by completing the difficult and time consuming ones, and leaving more time for the important things, like getting the job done.

Quicker identification of issues, through the use of technology, can better prevent potential issues or failures before they occur. Speeding up the process of identifying issues means you and your machinery spend more time on the job. Additionally, when an issue is identified quickly, maintenance and servicing can be undertaken immediately, reducing the potential for the machine's fault to worsen, and the machine being stood down. When this happens, projects may not be completed on time, which could negatively impact the profitability of a company.

Technology can also take the mental workload out of remembering when your machines require servicing.

Digital platforms allow us to take an almost hands-off approach when it comes to service and maintenance scheduling by remembering when the last service took place, and scheduling the next one based on a selected timeframe, or the machine's data, giving you more time to focus on the job instead. Digital service and maintenance scheduling can also improve safety by preventing you from forgetting to service your machines, reducing the likelihood of critical issues arising, accidents occurring, and reducing the risk of workers becoming injured, or killed while at work.

Thankfully, there is a simple, digital solution to improve your machinery safety and uptime. Plant Assessor gives you the tools to monitor machinery health, improving uptime and keeping people safe. This technology uses all relevant legislative and regulatory information to help identify hazards, rate risks and determine controls to be implemented. Plant Assessor's digital document library, and digital service and maintenance scheduling help you review and maintain your machinery and control hazards on an ongoing basis. Contact Plant Assessor for more information.

[www.assessor.com.au](http://www.assessor.com.au)



Disclaimer: This information is intended to provide general information on the subject matter. This is not intended as legal or expert advice for your specific situation. You should seek professional advice before acting or relying on the content of this information.



# More Power to You

## Generating Energy Efficiency for the Whole Site



Energy efficiency, environmental care, and reduction of carbon emissions has risen to the top of the agenda in the mining and construction industry. Put simply, energy efficiency is the use of less energy to perform the same task or produce the same result. More than ever, mining and construction companies are searching for ways to reduce their energy consumption. By using renewable energy, running costs and carbon emissions can be radically reduced, if not eliminated.

While Brooks Hire is synonymous with 'big yellow gear', it's certainly more than that now.

Brooks Hire has been taking active steps to provide clients with sustainable, environmentally friendly options, while still maintaining efficiency and productivity on site. We've invested in capital equipment that provides tangible savings to our clients' bottom line.

Some examples of the green equipment that we've added to the fleet include solar panels, solar powered lights and signs, solar powered battery storage systems, electric generators, and more recently, portable hybrid generators.

Portable Hybrid Generators are industrial grade high efficiency hybrid generators, which utilise a range of different power sources (solar, genset, battery input) to provide portable AC power. The units can be used in a modular set up to scale power needs when necessary.

Before sending this equipment out to the field, Brooks Site Services' Research and Development team have been trialling hybrid generator and solar systems on several of our own portable buildings including site offices and lunch rooms. We have seen massive reductions in fuel consumption and emissions during this period.

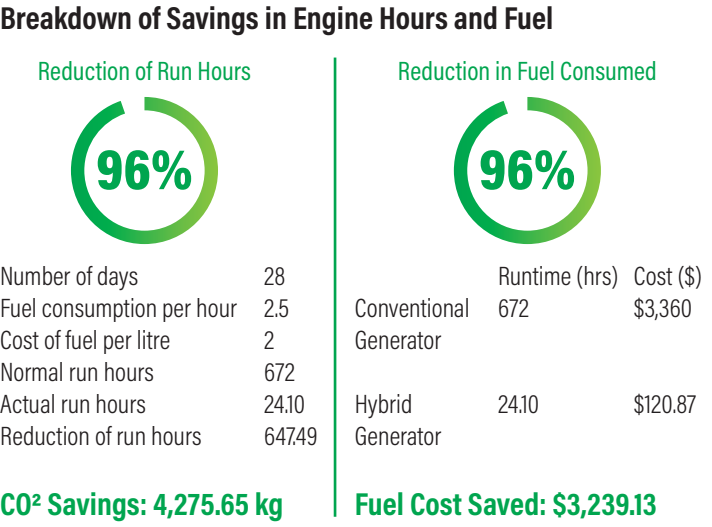
Brooks Site Services is now working with several major clients, and has implemented these systems into the field providing power for site office/camp setups, and remote construction water supply installations, where power supply is a constant demand, and a typical generator setup can be costly, both in time and money.

These systems are designed to be portable for easy plug and play installation and de-mobilisation.

Brooks Site Services General Manager, Ben Cook, has been monitoring the energy and fuel costs closely, and the results have been fantastic.

"The feedback from our clients has been excellent," said Ben. "Due to the added power of solar, they've seen a substantial reduction in running hours and fuel costs. Ultimately, this equates to less CO<sub>2</sub> emissions, which is great for the environment, and also a monetary saving for the company."

Using the Globe Power HAC15K-20 Hybrid Generator with a solar panel set up, this is the results that one of our clients has achieved:



With a massive reduction of \$3,239 in fuel costs over 28 days, these are figures that can't be ignored. Equally, reducing carbon emissions by over 4,000kg is a very commendable achievement.

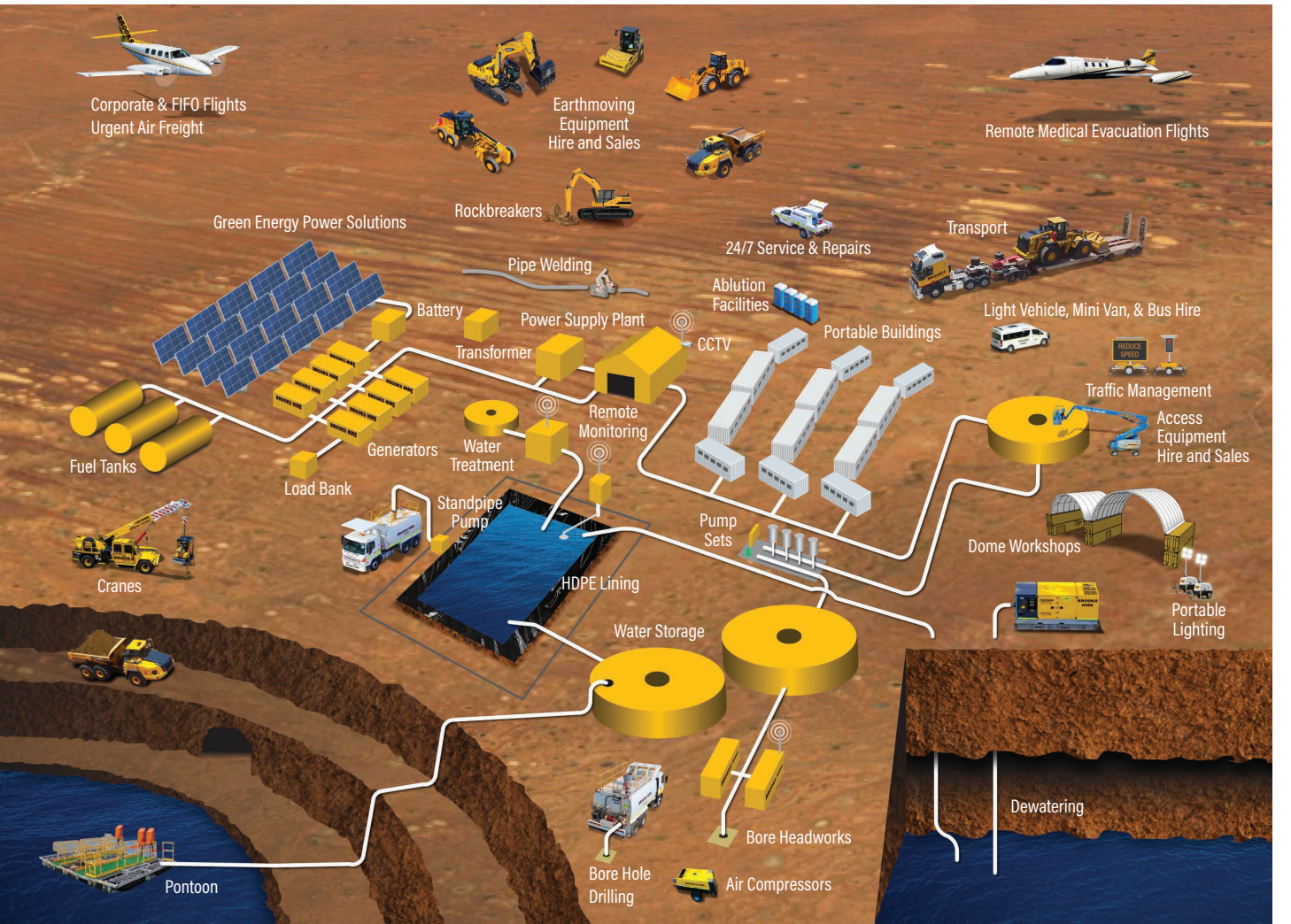
- These hybrid generator units are designed specifically for remote applications such as:
- Mining camps
  - Communications infrastructure
  - Residential areas under construction
  - Events
  - Back up power for essential services

They are quick and easy to install, and boast a 10 year battery life, that is low maintenance, and provides exceptional return on investment.

Designed for ease of transport, the compact unit is fitted with forklift pockets, single lift point, and tie down points to enable quick remote delivery. Brooks Site Services also offers remote monitoring, detailing power usage and run time, so you can see the savings for yourself.

If you require green energy solutions on your site, call the 'Green Team' at Brooks Site Services on 1300 276 657.

**BROOKS - 'more than big yellow gear hire.'**





# Sold on Success



## Access Sales Boom Higher

In the last 12 months, Brooks Access has grown exponentially. A division of the Brooks group of companies, Brooks Access has forged its own path in the access industry becoming a leading supplier of access equipment for both hire and sales.

In January to February of 2023 alone, Brooks Access took stock of thirteen new machines for their hire fleet and sold twenty-two from their showroom floor.

Sitting down with Brooks Access General Manager, Claire Harrison, we discuss the industry and rapid growth of the company.

"We've worked really hard to get to the point that we're at today," reflects Claire, "able to provide customers with machines at extremely competitive prices and time frames."

Growth of the company has seen a large stock of new inventory arriving for sale, including an extensive range of straight booms, articulated booms, scissor lifts, telehandlers, forklifts, and cranes. These, from leading suppliers, including: JLG, Genie, Haulotte, Merlo, Kalmar, Franna, and JCB.

Beyond the large range of stock available on the floor, there's notable recognition towards the importance of client experience.

"Being a small team, we're dedicated to delivering a personalised service, past what other companies are able to provide," shares Claire. "Customers can walk into the yard and buy the equipment right then and there."

This desire to provide customers with exactly what they're after, runs deep in the roots of Brooks, being a 100% family owned and operated group of companies. Where a particular piece of equipment might not be available directly from an OEM supplier, Brooks Access source the machine from alternative suppliers, in record time.

"Strong relationships in the industry provides our team with leveraged purchasing power and the capacity to purchase brand new equipment as our clients require it," Claire explains.



Working with clients Australia-wide, among the elevated work platforms sold, are:

- 1x Haulotte Star6 vertical mast lift to Whitsundays, QLD
- 5x Genie GS-1432m scissor lifts to WA, VIC, NSW, & QLD
- 3x JLG R1932 scissor lifts to the South West, WA
- 1x Genie Z-30/20N RJ knuckle boom lift to Darwin, NT
- 1x Genie Z-62/40 to the Pilbara, WA
- 1x Merlo 40.17 telehandler, 1x Manitou MI-X 100 D forklift, and 1x Genie GS-2669RT scissor lift to Perth, WA

Customer feedback reflects the team's commitment to service, with a client who purchased a scissor lift, telehandler, and forklift for their Perth-based business, sharing: "The team at Brooks Access set the benchmark when it comes to purchasing access equipment. They presented us options from many suppliers (some of which we hadn't considered) in a very short space of time to come up with a solution that best suited our needs and our budget. They are so friendly and willing to help with the technical support to back up the products they sell. We trust the team at Brooks and will confidently continue to buy from them."

Looking to the future and an end goal of attaining zero emission operations, Brooks Access are integrating hybrid and fully electric boom lifts into their fleet for sale. Included in the stock of new machines acquired, are the Genie Z45 FE and Genie Z-60 FE articulated boom lifts

Both models are 4WD with 45% gradeability, and are equipped with Genie's dual parallelogramme system and fully proportional controls for precise boom positioning and smooth performance. Offering two modes of operation: all-electric, and Hybrid, and carrying a high-efficiency AC drive system, the machines provide enhanced driving performance and simplified maintenance.



Both models are scheduled to arrive in early 2024 and are available for pre-order now.

When purchasing through Brooks Access, all machines come with an annual inspection and option to add 2-year fixed price servicing.

Help line, remote monitoring & management assistance is available 24 hours a day, 7 days a week, and a team of trade qualified technicians and hire coordinators are on standby for around-the-clock service with onsite servicing available within 30km of metro areas.

Additionally, in-house financing on machines is available through Brooks Finance, allowing the process to be fully customisable to each individual customers' requirements.

Brooks Access' equipment and elevated work platforms are available for hire or sale, Australia-wide from their branches in Perth, Sydney, Melbourne, Brisbane, Adelaide, Darwin, Bunbury, Kalgoorlie, Newman, Karratha, Port Hedland, Mackay, Toowoomba, Dalby, Albany, and Port Augusta. Delivery can be facilitated to any jobsite in Australia, making the purchasing process even simpler.

The full range of Brooks Access equipment can be viewed on their website:

[www.brooksaccess.com.au](http://www.brooksaccess.com.au)







# FIFO Flights Take Off

## Brooks Airways Services the Mines



Mining is Western Australia's largest output generating sector, supporting an estimated annual output of \$222.901 billion. With most of WA's mine sites being located in the remote Pilbara region, FIFO (fly-in fly-out) has become a popular working arrangement for employees. There are more than 60,000 FIFO workers in Western Australia who fly into remote work sites for mining, oil and gas projects across the state.

This year, Brooks Airways expanded their services to cater to the ever growing needs of the mining industry by offering FIFO flights and air freight. This service is available from their Perth Airport base, to anywhere in Australia, and even internationally.

Brooks Airways owns thirteen aircraft in total, seven King Air Turbo Props, and six Learjets. The King Airs are perfect for FIFO flights to remote locations. They have a cruising speed of 580km per hour, and the ability to land at remote airstrips that are unaccessible to other commercial aircraft. The Learjets excel when it comes to long distance travel. Fitted with long range fuel tanks, they can fly up to 4,500km, reaching any destination in Australia without a fuel stop.

When travelling with Brooks Airways, FIFO workers have the luxury of free parking, and the use of their comfortable departure lounge with kitchen and bathroom facilities. Mining companies can hire Brooks Airways for one off charters, or regular scheduled FIFO flights.

# Brooks Makes Top 10

## Genmac Distributor Awards

Brooks Equipment Sales has been recognised by Genmac Power Products as one of their top 10 distributors worldwide.

Genmac is an Italian manufacturer of quality generating sets since 1983. Their products are silent, reliable, and durable. Brooks Equipment has imported a range of Genmac generators and light towers, and is selling them throughout their 20 Australia-wide branches. The brand has become so popular with Australian customers, that Brooks Equipment was named as a worldwide Top 10 Distributor. In January, Genmac Export Manager, Caterina Beltrami, flew in from Bologna, Italy to present Brooks with the award.

"The fact that Australian companies are coming back to us to buy multiple Genmac units, is a testament to their performance," said Nathan Fenemer. "Our customers know that when they purchase a Genmac from Brooks, it's going to be reliable."

Brooks Equipment has a range of Genmac generators from 5kVA to 300kVA, as well as Winky and Bellatrix light towers. This equipment is on the showroom floor and is available anywhere in Australia.



# Leeuwin Estate Lunch Charter



Escape on your private charter down the coast to Margaret River and enjoy the ultimate 'Farm to Fork' Lunch and Wine Package at the glorious Leeuwin Estate.

- 10:30 Meet for a glass of champagne at our first class departure lounge.
- 11:00 Board your private flight to Margaret River.
- 12:00 Sit down to enjoy a seasonal three course meal (choice at each course) with paired current release wines.
- 16:00 Depart Leeuwin Estate.
- 16:45 Arrive back to Perth Airport.

FROM **\$699**  
PER PERSON\*



Cost based on 9 passengers, departing from Perth Airport (private FBO), WA. Aircraft seats up to 9 passengers (maximum combined passenger weight 900kg). Tour subject to fair weather flying conditions and airstrip suitability. Terms and Conditions apply.

1300 AIRWAY (247 929)

@ops@brooksairways.com @brooksairways.com

**BROOKS**  
AIRWAYS



# Creating Civil Diversity



## Oaks Civil Construction Empowers Aboriginal People

Oaks Civil Construction ('Oaks') is a 100% Aboriginal owned and operated civil construction, traffic management and workforce solutions business, founded by Jarrad Oakley Nicholls in 2019. Oaks commenced in Geraldton, within the Midwest Gascoyne region of WA and quickly expanded to service delivery across the Perth Metropolitan area as well.

In this edition, we caught up with Oaks' Founder, Jarrad, to reflect on his mission, and the evolution of his business. Jarrad is a proud Aboriginal man with family and cultural ties to Malgana & Amangu (Yamatji), Wiradjuri (Koori), Southwest Bojjarah & Whadjuk (Noongar) and Kija (East Kimberley's) traditional owner groups.

### What prompted you to open your own Civil Construction company?

With a decade of experience in Aboriginal employment services and business development, I gained a broad network through working with construction leaders across civil, mining and government to provide employment opportunities to long term unemployed people.

I was continuously seeing a gap, and a revolving door of the people we were placing into work, returning after a few months. In 2019, I decided to start a business that employed, and was an entry point to a industry that has the ability to provide sustainable employment. That was the start of Oaks Civil Construction. My goal was to create positive employment opportunities for Aboriginal people and the local community. Furthermore, I wanted to drive a quality and safety focused business that leads by example for the civil construction industry, and set the standard for Aboriginal businesses.



### Oaks has grown significantly since its opening in 2020. How did you achieve such quick success?

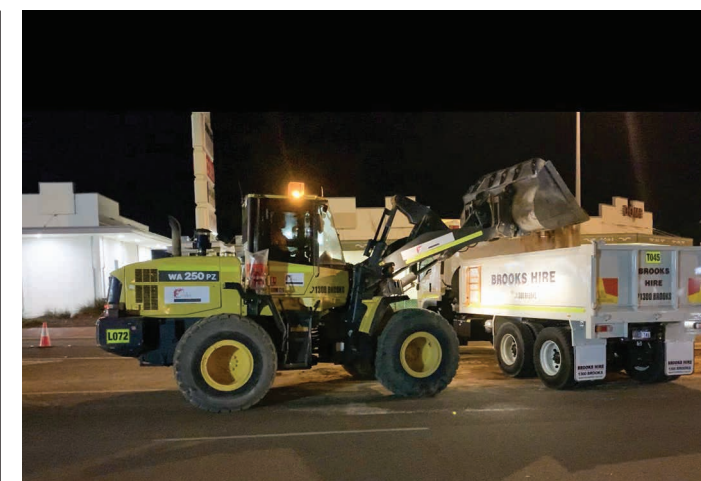
Oaks formed through the acquisition of assets of an established traffic management business in Geraldton. Since then, we have established a new branch in Perth, added a new fleet and grown our workforce to over 100 employees.

Our growth came from the demand through the construction industry. Even though we started at the begining of a pandemic, we supplied a highly required resource that thrived through this time. This fast tracked the business, and helped us build experience and knowledge, building a reliable brand and reputation.



### What benefits have you experienced by promoting a diverse workforce?

Diversity within our team has encouraged great commitment and loyalty, along with a sense of belonging. We promote a healthy workplace based on teamwork, respect, quality, safety, and diversity. Integrity and trust is a non-negotiable quality we drive to guarantee unity across our workforce, and carry through to our services.



### Oaks Civil is known for their community involvement. Why is this so important to you?

Supporting and assisting others to achieve their goals and aspirations! There is nothing better then seeing the change employment can do for people on so many diferent levels. Being a 100% owned and operated Aboriginal business, there is a much great expectation around social impact and a willingness to support and assist our communities to make changes on a number of social levels.

### Where do you see Oak Civil in 5 years from now?

In 5 years time, I would expect to see Oaks delivering on larger scaled work packages, both self delivering, and subcontracting specific works, with an aim to having a profitable business structure that still gives back to the community.

If you'd like to know more about Oaks Civil Construction, visit [www.oakscivilconstruction.com.au](http://www.oakscivilconstruction.com.au)

"My goal was to create positive employment opportunities for Aboriginal people and the local community."

JARRAD OAKLEY NICHOLLS, FOUNDER OF OAKS CIVIL CONSTRUCTION





# New Equipment

## THE BROOKS FLEET OF ASSETS

**Komatsu D65EXi-18 Bulldozer** This 24t Bulldozer arrived in Brooks Welshpool yard in January, was sent out a few days later for its first job in Bunbury.



**BROOKS HIRE**

These new mine spec'd high head, pit dewatering pumps, have landed! 80/180 Cornell wet end pump with duplex impeller.



Caterpillar 279D3 & 289D3 Skid Steers



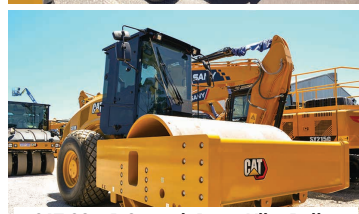
Hydrema 912ES 10KL Artic. Water Truck



38t Komatsu WA500 Wheel Loader



Komatsu HM400 33KL Artic. Water Truck



CAT CS78B Smooth Drum Vibe Roller



CAT CW34 Multi Tyre Pneumatic Rollers



Genmac Bellatrix 4 x 320W LED Light Towers



Mitsubishi Triton 4x4 - Steel Tray Utes



**BROOKS TRANSPORT**

Two new Volvo FH13 6x4 Prime Movers were delivered to Perth in February. One of these was decorated in an original artwork by Indigineous artist, Danielle Champion. Meanwhile, we also took delivery of a brand new tri-axle plant trailer, and an Isuzu tilt tray truck.



**BROOKS EQUIPMENT**

Kicking off 2023 with a bang, Sany piling rigs have landed at Brooks Equipment and are now available for sale! Chief Operating Officer, Josh Willet, snapped a picture with the first Sany SR125 piling rig as it arrived at our Queensland branch. These are available for sale anywhere in Australia. We've also had plenty of new Sany excavators and Genmac generators, arrive at our WA and NT branches. Sany is now in the Top 3 selling brands of crawler excavator in Western Australia!



**BROOKS ACCESS**

Brooks Access has been very busy taking delivery of a wide range of scissor lifts, boom lifts, and telehandlers. Some of these machines are allocated to the ever growing hire fleet, however, we also have a strong range of floorstock for sale.



7t Merlo Panoramic 72.10 Telehandler



34ft Genie Z34/22 IC Articulated Boom



80ft Haulotte HA26 RTJ Pro Artic. Boom

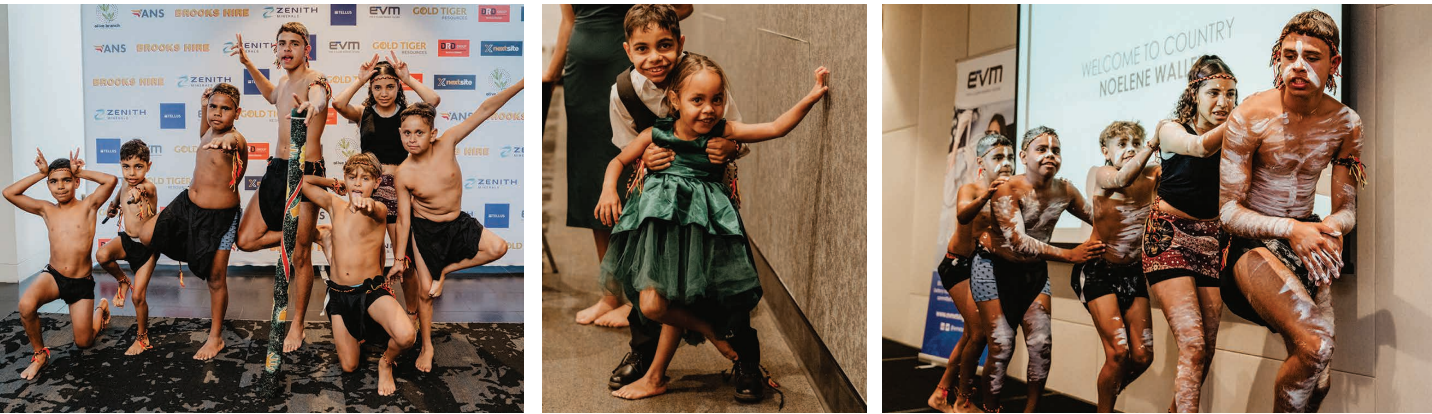


4t Merlo TF42.7-115 Telehandler



# OBE Appreciation Dinner

On 16th December 2022, Brooks were lucky enough to attend Olive Branch Enterprise’s Appreciation Dinner. The event was held at the University Club of Western Australia and featured some great entertainment by the Champion family kids.



# ACBC New Year Gala

Happy Year of the Rabbit! As Silver Sponsors of the Australian Chinese Business Council (ACBC), Brooks Hire was proud to attend their New Year Gala on Friday, 3rd February.



# TSBE Industry Classic



Brooks Hire were Hole Sponsors at the Toowoomba and Surat Basin Enterprise Industry Classic golf day, held on Friday, 24th February. Madison James, BJ Schwerin, David Morrow, and Rob Barylka were out in force representing, the Brooks team.



# AOG Energy Conference

Michael O’Grady was representing Medical Air and Brooks Airways at the AOG Energy Conference held at Perth Exhibition Centre from 15th to 17th, March 2023.

AOG Energy is held annually in the energy hub of Australia, Perth. For over 40 years it has brought the entire oil, gas and energy supply chain together as a platform for discovering innovation, capabilities and opportunities, supported by major operators, government and industry.

Medical Air and Brooks Airways provide medEvac and FIFO flight contracts to the oil, gas, and energy industry.

# WAMC President’s Cup Day

March was definitely the season to be golfing in WA. The WA Mining Club held their annual President’s Cup Day on Friday, 3rd March. Gary Bushell, Michael O’Grady, Jacinta Pickering, and Mitch Foxon were playing for Brooks on the day.



# Dyno Nobel Golf Day

On Friday, 10th March, Dyno Nobel held a golf day to raise money for Beyond Blue. Beyond Blue is an Australian mental health and wellbeing support organisation. They provide support programs related to depression, suicide, anxiety disorders and other related mental illnesses. Brooks Access and Brooks Site Services were joint Silver Sponsors for the event which raised \$50,000.

# Sydney Build Expo

Brooks Hire joined over 500 exhibitors at the Sydney Build Expo, held on the 6th and 7th March, 2023. Australia’s largest construction expo featured 9 Stages - Future of Construction, Digital Construction, Construction Safety, Architecture, Sustainability, Infrastructure and more.



Brooks Hire had two machines on display by special request of the Sydney Build organisers.





# National Apprenticeship Week

The 13th to 19th February 2023, was National Apprenticeship Week - bringing together the entire apprenticeship community to celebrate everything that is amazing about apprenticeships. The theme for this year was 'Skills for Life'.

Driving strategies for a sustainable future, Brooks has approached the national skills shortage with a vision to not only improve our own workforce, but to provide skilled workers to the Australian labour pool. Our apprenticeship programs have seen our employees graduate to qualified trades people, adding to our national skilled workforce. Brooks currently has 38 apprentices throughout Australia.

We haven't got photos of them all, but "thank you" to all of our hardworking apprentices and trainees.



Connor from Brisbane, QLD



Harrison from Dalby, QLD



Jacob from Sydney, NSW



Mason from Perth, WA



Ross, Mason, and John from Perth, WA



Jimmy and the team at Darwin, NT

# Albany Sundowner

On Wednesday, 22nd February, to celebrate the expansion of Brooks Access, our Albany branch put on a 'Sundowner' BBQ. Customers from the Great Southern region were invited to join us at the branch for a sausage sizzle and tasty beverage. It was a great way to come in and see the new equipment that we have available in a relaxed atmosphere.



# International Women's Day

On Wednesday, 8th March, Brooks celebrated International Women's Day - a global day celebrating the social, economic, cultural, and political achievements of women. The day also marks a call to action for accelerating women's equality. Celebrating women's achievements and increasing visibility, while calling out inequality, is key.

The theme for IWD 2023 was wear purple, and Embrace Equity. It was great to see all of our staff supporting the day, and recognising the contribution that women are making to our workplace.





# Welcome Aboard

## Lea Clarke

**What was your first job:**  
Butcher's Assistant (lucky).

**What is your role at Brooks:**  
Sales Representative - Brooks Equipment, Perth.

**What achievement in life are you most proud of:** Setting up life and building a family in Australia.

**How would you describe yourself in 3 words:**  
Passionate, Trustworthy and Fun.

**Where would we find you on the weekends:**  
Son's AFL or the beach and cafe.

**What is something that you're really good at:** Singing.

**What is something that you're really bad at:** Ice Skating.

**If you could invite anybody to dinner (dead or alive), who would it be:** Ricky Gervais.

**You're going to a Superhero party, who do you dress up as:**  
Austin Powers.

**Favourite Cake:** Potato cakes with salt.

**Favourite song:** 'So Caught Up' by Teskey Brothers.

**Favourite holiday destination:** Greece and Thailand.



## Khong Leong Tam

**What was your first job:**  
Practising architect.

**What is your role at Brooks:**  
Property Manager, Perth.

**What achievement in life are you most proud of:** Knowing you.

**How would you describe yourself in 3 words:** Happy, Upset, Look forward.

**Where would we find you on the weekends:** Golf courses.

**What is something that you're really good at:** Problem solving.

**What is something that you're really bad at:** Drive below speed limit.

**If you could invite anybody to dinner (dead or alive), who would it be:** You.

**You're going to a Superhero party, who do you dress up as:**  
Hulk.

**Favourite Cake:** Tiramisu.

**Favourite song:** 'It's My Life' by Bon Jovi.

**Favourite holiday destination:** Japan.



# Meet the Team

## Vinny Yap

Vinny joined the Brooks Hire team in October 2011, and is fast approaching 12 years with the business. Starting in an Administrative role, Vinny has worked hard to navigate her way up to become our Chief Procurement Officer. Vinny is lots of fun to work with and is very well respected by staff and management.

**What has been your favourite aspect of working with Brooks:** Variety of growth opportunities to pursue a career.

**What was your first job:** Nurse.

**What did you want to be when you were growing up:** Doctor.

**What is your role at Brooks Hire:** Chief Procurement Officer.

**What achievement in life are you most proud of:**  
Attained Sany Dealership for Brooks in WA, NT & QLD.

**How would you describe yourself in 3 words:**  
Loyal, Truthful, Can Do Attitude.

**Where would we find you on the weekends:**  
Yoga studio, beauty salon, and acupuncture.

**What is something that you're really good at:** Cooking.

**What is something that you're really bad at:**  
Being a housewife hahaha.



**If you could invite anybody to dinner (dead or alive), who would it be:** My Dad.

**You're going to a Superhero party, who do you dress up as:**  
Catwoman.

**Favourite type of cake:** Pandan souffle cake.

**Favourite Song:** 'Jai Deux Amour' by Chantal Chamberland.

**Favourite Holiday Destination:** Somewhere warm.



## Alison Wilkes

**What was your first job:**  
While I was still at school, I worked in a Still Room in a restaurant (Google that!).

**What is your role at Brooks:**  
People and Wellness Officer, Perth.

**What achievement in life are you most proud of:** Moving to Australia, having my children.

**How would you describe yourself in 3 words:** Kind, Savvy, and Loyal.

**Where would we find you on the weekends:**  
With my family, at the park, with friends.

**What is something that you're really good at:** Remembering kindness.

**What is something that you're really bad at:** Drawing.

**If you could invite anybody to dinner (dead or alive), who would it be:** My Mum.

**You're going to a Superhero party, who do you dress up as:** Nah, I don't like Marvel/DC.

**Favourite Cake:** The fat free one.

**Favourite song:**  
At the moment, 'Unholy' by Sam Smith.

**Favourite holiday destination:** Thailand.



## Gina's Kitchen

### Honey Garlic Glazed Salmon

Vinny's been too busy filling out questionnaires and buying new machines to do any cooking! This edition, Vinny's Asset Administrator, Gina Liew, has cooked up something yummy for us.

#### Method:

1. Marinate the salmon: Pat salmon dry with paper towel, then season with salt, pepper, paprika and place into a zipped food storage bag or container. Set aside.
2. Sauce: In a medium bowl, whisk together honey, soy sauce, lemon juice & water. Set aside.
3. Use a frying pan over medium-high heat, heat two tablespoons oil. Add salmon, skin-side down and cook 4-5 minutes until the skin is deeply golden, then flip over.
4. Add butter and garlic to the pan and cook until fragrant. Add the honey mixture & sliced lemons and cook until sauce is reduced by about 1/3. Baste frequently with sauce from the pan by spooning it over the top of the salmon.
5. Garnish with lemon wedge and chopped parsley to serve.

#### Ingredients:

4 x Fresh skin on salmon fillets  
½ tsp Salt                      ½ tsp Paprika  
Freshly ground black pepper

#### Sauce

2 tsp Butter                      2 tbsp Olive oil  
4 cloves Garlic minced      4 tsp Honey  
2 tsp Water                      2 tsp Soy sauce  
1 tsp Lemon juice              1 Lemon, sliced  
Freshly chopped parsley, for garnish





**WINNER**

Jack Dell - Dalby, QLD



# Snap That

STAFF PHOTOGRAPHY COMPETITION

Reece Weadley  
Great Australian Bight, WA



Naomi Blewit  
Darwin, NT



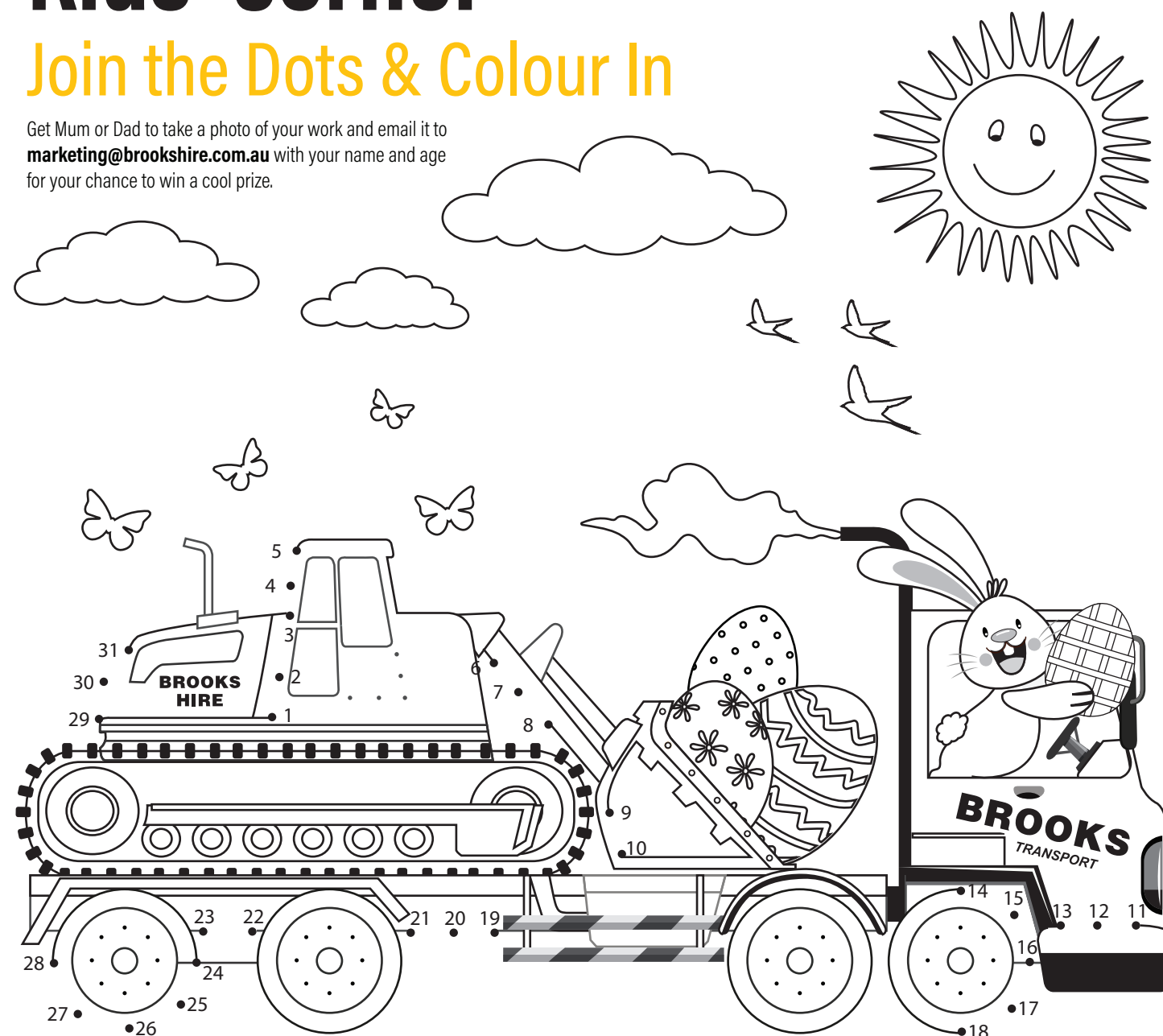
Stuart Harfield  
Perth, WA



# Kids' Corner

## Join the Dots & Colour In

Get Mum or Dad to take a photo of your work and email it to [marketing@brookshire.com.au](mailto:marketing@brookshire.com.au) with your name and age for your chance to win a cool prize.



Lyla Wilkes - Age 3

**Congratulations to all of the winners from our last edition. You will all be receiving a prize in the post.**





There are 10 differences between the photos below. See if you can find them all.



Find the 9 letter word using the letters in the grid, then try to make as many other words as you can. Words must be a minimum of 4 letters and must contain the middle letter. No proper nouns or plurals.

**Good** - 15 Words      **Very Good** - 20 Words      **Excellent** - 25 or more

R	N	T
P	<b>O</b>	A
S	T	R

[illegible]

### Across

1. Drinks slowly  
5. Aide: Abbr.  
9. Machu Picchu builders  
14. Correct mistakes in  
15. Ness, for one  
16. Ship's load 17. Unassisted  
18. Miles away  
19. Web correspondence  
20. London press locale  
23. Sunshine State: Abbr.  
24. Water\_\_: dental gadget  
25. School term  
27. Adam's apparel?  
31. "Shoo, Tabby!"  
32. Bordeaux bye-bye  
33. Lariat material  
35. Once around the sun  
39. Court arbiter  
40. Little tykes  
43. Lager kin 44. Spouse  
46. Artist Magritte  
47. Welles or Bean  
49. Hearing organs  
51. Gave to charity  
53. Seafood selection  
57. Set afire  
58. Rainbow shape  
59. Pre-color computer display  
64. Game with numbered balls  
66. Gen. Robert \_\_\_\_  
67. Mystical glow  
68. Take an oath  
69. "Gimme a break!"  
70. Bed with bars  
71. Conductor Previn  
72. Author \_\_\_\_ Christian Andersen  
73. A loooooong time

1. Women's fitness magazine	8. Like some old bikes	28. Notion	42. Part of SST	56. 1965 civil rights march site
2. Fan club's focus	9. Summer cooler	29. Special talent	45. Moray, e.g.	60. Broadway gas
3. Knotty wood	10. '60s conflict site	30. First Amendment guarantee	48. Daily grind	61. Currency on the Continent
4. Bell tower	11. Manual skill	34. Hold the deed to	50. 2000 presidential candidate	62. "___ Brockovich"
5. "Seward's Folly" purchase	12. Like a gymnast	36. Word after Near, Middle or Far	52. Mary-Kate and Ashley	63. Runs in, as a perp
6. Lenient, as on crime	13. Alternative power type	37. Burn balm	53. Cancún condiment	65. Roofing material
7. Surgery souvenirs	21. Traffic jam 22. Show host	38. Rip apart	54. Sovereign's headpiece	
	26. Pig's place	41. $2 + 2 = 5$ , e.g.	55. Played a role	
	27. Old MacDonald's place			

1	2	3	4		5	6	7	8		9	10	11	12	13
14					15					16				
17					18				18	19				
20				21					22			23		
			24				25				26			
27	28	29				30		31						
32						33	34				35	36	37	38
39				40	41					42		43		
44			45		46					47	48			
			49	50				51	52					
53	54	55					56		57					
58				59				60				61	62	63
64			65			66					67			
68						69					70			
71						72					73			

Enter numbers into the blank spaces so that each row, column and 3x3 box contains the numbers 1 to 9 without repeats.

	7			3			1	
1	3	9		8	2		6	
6							8	
7		2						1
			9		4			
8						9		6
	8							5
	5		1	4		2	9	7
	1			9			3	

There are 20 people in an empty, square room. Each person has full sight of the entire room and everyone in it without turning his head or body, or moving in any way (other than the eyes). Where can you place an apple so that all but one person can see it?



I am four times as old as my daughter. In 20 years time I shall be twice as old as her. How old are we now?

How do you make the number 7 even without addition, subtraction, multiplication, or division?

You have me today, Tomorrow you'll have more; As your time passes, I'm not easy to store; I don't take up space, But I'm only in one place; I am what you saw, But not what you see. What am I?



# Equipment Hire List



Front End Loaders

CATEGORY	MAKE	MODEL	ENGINE	WEIGHT
1.5m³	Komatsu	WA150	74 kW 99 HP @ 2000 rpm	7.5 Tonne
2.1m³	Caterpillar	930K	110 kW @ 1600 rpm	13 Tonne
2.5m³	Komatsu	WA250	124 kW 166 HP @ 2000 rpm	14 Tonne
3.1m³	Komatsu	WA320	124 kW 166 HP @ 2000 rpm	14 Tonne
3.5m³	Komatsu	WA380	140 kW 187 HP @ 2000 rpm	16 Tonne
3.75m³ - 4m³	Komatsu	WA430	173 kW / 232 HP @ 2.100 rpm	18 Tonne
3.4m³	Caterpillar	950M	187 kW 250 HP	20 Tonne
3.6m³	Caterpillar	962M	185 kW 248 HP	20 Tonne
4m³ - 5m³	Komatsu	WA470	204 kW / 274 HP @ 2.000 rpm	23 Tonne
5m³	Komatsu	WA480	223 kW / 299 HP	25 Tonne
4m³ - 5m³	Volvo	L150G	210 kW / 1400 rpm	25 Tonne
4.7m³ - 6.4m³	Komatsu	WA500	266 kW / 357 HP @ 1900 rpm	32 Tonne
5.6m³	Caterpillar	980M	278 kW	30 Tonne
5.6m³	Caterpillar	982M	278 kW @ 1800 rpm	35 Tonne
5.6m³	Hitachi	ZW370	289kW @ 1800 rpm	35 Tonne
6.4m³	Caterpillar	988K	403 kW	51 Tonne
6.4m³	Komatsu	WA600	395 kW / 529 HP @ 1800 rpm	55 Tonne
7m³	Volvo	L260H	309 kW / 420 HP	34 Tonne
13m³	Komatsu	WA900	638 kW / 856 HP	107 Tonne



Tool Carriers

CATEGORY	MAKE	MODEL	ENGINE	WEIGHT
2.2m³ - 2.3m³	Komatsu	WA250PT	104 kW 140 HP / 2000 rpm	10 Tonne
2.2m³ - 2.3m³	Komatsu	WA250PZ	103 kW 138 HP @ 2000 rpm	12 Tonne
1.9m³ - 2.7m³	Komatsu	WA270	111 kW 149 HP @ 2000 rpm	13 Tonne
2.5m³ - 2.7m³	Komatsu	WA320-8	123 kW/165 HP @ 2100 rpm	15 Tonne
2.5m³ - 2.7m³	Komatsu	WA320PZ-6	125 kW / 167 HP	15 Tonne
2.5m³ - 2.7m³	Volvo	L90F	129 kW @ 1700 rpm	16 Tonne
3m³	Volvo	L110F	170 kW @ 1700 rpm	19 Tonne
3.1m3	Hitachi	ZW180-5	126 kW @ 1500 rpm	14.5 Tonne
3.5m³	Volvo	L120F	180 kW @ 1700 rpm	20 Tonne
4.2m³	Volvo	L150F	209 kW @ 1400 rpm	23 Tonne
4.4m³	Volvo	L180F	234 kW @ 1400 rpm	26.6 Tonne
5.2m³	Volvo	L220H	279 kW 379 HP @ 1400 rpm	32.8 Tonne



Excavators

CATEGORY	MAKE	MODEL	ENGINE	BUCKET CAPACITY
1.5 Tonne	Komatsu	PC14R	11,6 kW / 15,6 HP @ 2.600 rpm	0.03m³
1.75 Tonne	Sany	SY16C	14.6 kW @ 2400 rpm	0.04m³
1.8 Tonne	Caterpillar	301.8	16.1kW / 19.2 HP @ 2,400 rpm	0.033m³
1.85 Tonne	Sany	SY18C	14.6 kW @ 2400 rpm	0.04m³
2.26 Tonne	Caterpillar	302	15.7kW / 21 HP @ 2,400 rpm	0.054m³
2.76 Tonne	Sany	SY26U	14.6 kW @ 2400 rpm	0.06m³
3 Tonne	Komatsu	PC30MR	22,0 kW / 29,5 HP @ 2.400 rpm	0.09m³
3 Tonne	Hitachi	ZX33	21.2 kW (28.4 HP)	0.09m³
3.85 Tonne	Sany	SY35U	18.2 kW @ 2400 rmp	0.12m³
5 Tonne	Komatsu	PC55MR	29.1 kW 39 HP/2400 rpm	0.15m³
5 Tonne	Komatsu	PC45MR	29.1 kW 39 HP/2400 rpm	0.15m³
5 Tonne	Komatsu	PC40MR	29.4 kW 39.4 HP/2350 rpm	0.15m³
5.3 Tonne	Sany	SY50U	29.1 kW @ 2400 rpm	0.15m³
6.1 Tonne	Sany	SY60C	42.4 kW / 56.9 HP	0.21m³
7.28 Tonne	Sany	SY75C	43 kW / 57.7 HP	0.28m³
8 Tonne	Komatsu	PC78MR	40,5 kW / 54 HP @ 1.850 rpm	0.28m³
8.5 Tonne	Komatsu	PC88MR	50.7 kW 68 HP @ 1950 rpm	0.34m³
8.8 Tonne	Sany	SY80U	53.7 kW @ 2100 rpm	0.28m³
9 Tonne	Caterpillar	308CR	52.4kW / 70.3 HP @ 2,200 rpm	0.23m³
9.1 Tonne	Sany	SY95C	53.7 kw / 72 HP	0.4m³
14 Tonne	Komatsu	PC138US	72.1 kW / 96.6 HP @ 2200 rpm	0.53m³
14 Tonne	Komatsu	PC160LC	90 kW / 121 HP @ 2200 rpm	0.6m³
14 Tonne	Hyundai	RI40LC	84 kW / 113 HP @ 2,100 rpm	0.6m³
15.1 Tonne	Sany	SY135C	78.5 kW @ 2000 rpm	0.6m³
16 Tonne	Sany	SY155U	78.5 kw @ 1900 rpm	0.06m³
16 Tonne	Hitachi	ZX160LC	90.2 kW / 122 HP @ 2,200 rpm	0.73m³
22 Tonne Zero Swing	Komatsu	PC228US	116 kW 155 HP @ 2000 rpm	1.0m³
22 Tonne	Caterpillar	320GC	107 kW (143 hp)	1.0m³
22 Tonne	Caterpillar	320DL	103 kW / 140 HP @ 1800 rpm	1.3m³
22 Tonne	Hitachi	ZX210H	122 kW (164 HP)	1.00m³
22 Tonne	Komatsu	PC200LC	110 kW 147 HP / 2000 rpm	1.2m³
22 Tonne	Komatsu	PC210LCi	118 kW / 158 HP @ 2000 rpm	0.97m³
22 Tonne	Komatsu	PC210LC	116 kW / 156 HP @ 2000 rpm	1.68m³
22 Tonne	Komatsu	HB215LC	110 kW / 148 HP @ 2000 rpm	1.36m³
22.6 Tonne	Sany	SY215C	122 kw @ 2300 rpm	0.93m³
23 Tonne	Komatsu	PC220LC	110 kW 147 HP / 2000 rpm	1.26m³
23 Tonne	Hitachi	ZX225USLC	159 hp (118 kW) @ 2,000 rpm	1.09m³
30 Tonne	Volvo	EC290CLC	153 kW (205 hp)	1.2m³
30 Tonne	Komatsu	PC270LC	149 kW 200 HP / 2050 rpm	1.25m³
31.5 Tonne	Sany	SY305H	212 kW @ 2000rpm	1.7m³
33 Tonne	Hitachi	ZX330	247 HP (180 kW)	1.4m³
33 Tonne	Hitachi	ZX350H	184 kW (246 HP)	2.00m³
34 Tonne	Komatsu	PC300LC	194 kW 260 HP / 1950 rpm	1.8m³
35 Tonne	Hitachi	ZX350LC	202 kW / 271 HP	2.1m³
36 Tonne	Komatsu	PC360LCi	192 kW / 257 HP @ 1950 rpm	1.96m³
36 Tonne	Komatsu	PC350LC	194 kW / 260 HP @ 1950 rpm	2.66m³
36.7 Tonne	Sany	SY365H	205 kW / 275 HP	1.5m³
37 Tonne	Caterpillar	336	232 kW	2.27m³
45 Tonne	Komatsu	PC450LC	270 kW / 362 HP @ 1900 rpm	2.8m³
54.5 Tonne	Sany	SY500H	298 kW / 399.6 HP	2.2m³
60 Tonne	Komatsu	PC600LC	288 kW 386 HP @ 1800 rpm	3.81m³
76.2 Tonne	Sany	SY750H	377 kW @ 1800 rpm	4.2m3
78.6 Tonne	Sany	SY870H	377 kW @ 1800 rpm	5.0m³
80 Tonne	Komatsu	PC850-8EOSE	370 kW 496 HP / 1800 rpm	4.3m³
85 Tonne	Komatsu	PC800LC	363 kW 487 HP @ 1800 rpm	4.5m³
125 Tonne	Sany	SY1250H	567 kW @ 1800 rpm	7m³





## Rollers

CATEGORY	WEIGHT	MAKE	MODEL
Smooth Drum	7 Tonne	Bomag	BW177DH
Smooth Drum	11 Tonne	Dynapac	CA252D
Smooth Drum	11 Tonne	Bomag	BW212D
Smooth Drum	12 Tonne	Hamm	3412 HT VIO
Smooth Drum	12 Tonne	Caterpillar	CS64B
Smooth Drum	12 Tonne	Bomag	BW213D
Smooth Drum	12.5 Tonne	Caterpillar	CS56B
Smooth Drum	12.7 Tonne	Dynapac	CA302D
Smooth Drum	13.2 Tonne	Dynapac	CA362D
Smooth Drum	12.6 Tonne	Bomag	BW213D
Smooth Drum	14.3 Tonne	Caterpillar	CS68B
Smooth Drum	15.7 Tonne	Hamm	3516
Smooth Drum	16 Tonne	Caterpillar	CS74B
Smooth Drum	16 Tonne	Caterpillar	CP76B
Smooth Drum	16.1 Tonne	Bomag	BW216D
Smooth Drum	17.89 Tonne	Hamm	3518
Smooth Drum	18.7 Tonne	Caterpillar	CS78B
Smooth Drum	19.3 Tonne	Dynapac	CA6000D
Smooth Drum	19.8 Tonne	Hamm	3520
Smooth Drum	20 Tonne	Caterpillar	CS79B
Padfoot	12 Tonne	Caterpillar	CS12 GC
Padfoot	12 Tonne	Caterpillar	CS56B
Padfoot	12 Tonne	Bomag	BW211D
Padfoot	12.6 Tonne	Bomag	BW213D
Padfoot	13.2 Tonne	Dynapac	CA362D
Padfoot	15.7 Tonne	Hamm	3516P
Padfoot	16.1 Tonne	Bomag	BW216PD
Padfoot	17.6 Tonne	Caterpillar	CP76B
Padfoot	17.89 Tonne	Hamm	3518P
Padfoot	18 Tonne	Dynapac	CA6000PD
Padfoot	18.6 Tonne	Dynapac	CA602PD
Padfoot	19.4 Tonne	Bomag	BW219PD
Padfoot	19.8 Tonne	Hamm	3520P
Multi Tyre	18 Tonne	Hamm	HP280
Multi Tyre	18 Tonne	Caterpillar	CW34
Multi Tyre	18.3 Tonne	Hamm	GRW280
Multi Tyre	20 Tonne	Caterpillar	CW34
Multi Tyre	20 Tonne	Ammann	AP240
Multi Tyre	20 Tonne	Bomag	BW24RH

CATEGORY	WEIGHT	MAKE	MODEL
Multi Tyre	20 Tonne	Bomag	BW25RH
Multi Tyre	24 Tonne	Caterpillar	CW34LRC
Double Drum	765 Kg	Husqvarna	LP 6505
Double Drum	1 Tonne	Husqvarna	LP 7505
Double Drum	2.5 Tonne	Caterpillar	CB2.7
Double Drum	2.6 Tonne	Hamm	HD12VV
Double Drum	2.8 Tonne	Bomag	BW120AD
3 Pin Static	14 Tonne	Aveling Barford	DC014
Trench Roller	1,340 Kg	Ammann	1575
Trench Roller	1,495 Kg	Wacker Neuson	RTX-SC3
Trench Roller	1,595 Kg	Dynapac	D.ONE 850
Trench Roller	1,675 Kg	Husqvarna	LP9505



## Compactors & Tampers

CATEGORY	WEIGHT	MAKE	MODEL
Tampers	98kg	Husqvarna	LT800
Plate Compactors	185kg	Husqvarna	LG164
Plate Compactors	244kg	Husqvarna	LG204
Plate Compactors	302kg	Husqvarna	LG300
Plate Compactors	436kg	Husqvarna	LG400
Plate Compactors	500kg	Bomag	BPR 70/70D
Plate Compactors	500kg	Dynapac	LG500
Plate Compactors	750kg	Bomag	BPR 100/80
Plate Compactors	750kg	Dynapac	LH700
Plate Compactors	800kg	Husqvarna	LH804



## Compressors

TYPE	AIR FLOW	DRY WEIGHT	PRESSURE
Trailer	127 cfm	700 kg	7 bar
Trailer	176.5 cfm	800 kg	7 bar
Skid	185 cfm	950 kg	7 bar
Trailer	251 cfm	1400 kg	7 bar
Skid	400 cfm	1920 kg	10 bar
Trailer	423 cfm	2000 kg	7 bar
Trailer	530 cfm	2600 kg	10 bar
Trailer	893 cfm	3700 kg	8 bar
Trailer	938 cfm	5300 kg	12 bar
Trailer	1020 cfm	5300 kg	10.3 bar
Trailer	1102 cfm	5300 kg	8.6 bar



## Graders

CATEGORY	MAKE	MODEL	WEIGHT
12' Motor Grader	Caterpillar	120M	14.5 Tonne
12' Motor Grader	Komatsu	GD555	8 Tonne
14' Motor Grader	Caterpillar	140M	18.4 Tonne
14' Motor Grader	Caterpillar	140M AWD	18.4 Tonne
14' Motor Grader	Caterpillar	140H	18.4 Tonne
14' Motor Grader	Caterpillar	140G	18.4 Tonne
14' Motor Grader	Caterpillar	150 AWD	19.8 Tonne
14' Motor Grader	Komatsu	GD655	18.5 Tonne
14' Motor Grader	John Deere	770G	19.3 Tonne
14' Motor Grader	John Deere	672G	20 Tonne
14' Motor Grader	John Deere	772GP	20.5 Tonne
16' Motor Grader	John Deere	872GP	21.6 Tonne
16' Motor Grader	Caterpillar	16MQLR	30 Tonne
24' Motor Grader	Caterpillar	24	73 Tonne



## Dozers

CATEGORY	MAKE	MODEL	BLADE WIDTH
17.3 Tonne	Caterpillar	D6N	4080mm
17.7 Tonne	Caterpillar	D6H	4486mm
21 Tonne	Caterpillar	D6T XL	3693mm
21 Tonne	Caterpillar	D6T LGP	3693mm
27 Tonne	Caterpillar	D7	3988mm
39.4 Tonne	Caterpillar	D8	5045mm
70 Tonne	Caterpillar	D10T	7416mm



## Dump Trucks

CATEGORY	PAYLOAD	MAKE	MODEL
Articulated	30 Tonne	Komatsu	HM300
Articulated	37 Tonne	Hitachi	AH400D
Articulated	40 Tonne	Komatsu	HM400
Articulated	41 Tonne	Caterpillar	745



## Site Dumpers

CATEGORY	PAYLOAD	MAKE	MODEL
Side Tipper	9 Tonne	Wacker Neuson	DV90
Front Tipper	9 Tonne	Thwaites	9T Dumper



## Water Trucks

CATEGORY	CAPACITY	MAKE	MODEL
Rigid	14,000 L	Isuzu	FVZ 260-300
Rigid	14,000 L	Hino	500
Rigid	15,000 L	Isuzu	FVZ 260-300
Rigid	15,000 L	Hino	500
Rigid	15,000 L	Mercedes Benz	Axor
Rigid	20,000 L	Isuzu	FYH 2000 8x4
Rigid	20,000 L	Iveco	Trakker AD450 6x6
Articulated	16,000 L	JCB	Fastrac 185/65
Articulated	16,000 L	Chamberlain	C6100
Articulated	16,000 L	Mercedes Benz	MB Trac
Articulated	26,000 L	Komatsu	HM300
Articulated	35,000 L	Komatsu	HM400



## Service, Fuel & Tipper Trucks

CATEGORY	CAPACITY	MAKE	MODEL
Service Truck	8 Compartments	Isuzu	FVZ 260 - 300
Service Truck	8 Compartments	Hino	500
Fuel Trailer	1,400 L	-	-
Fuel Trailer	2,000 L	-	-
Fuel Truck	14,000 L	Hino	500
Tipper Truck	11m³	Isuzu	FVZ 260-300
Tipper Truck	11m³	Hino	500
Tipper Truck	11m³	Isuzu	FVZ 1400
Side Tipper	21m³	Howard Porter	-
Side Tipper	24m3	Road West	-



## Backhoes

DIG DEPTH	MAKE	MODEL	WEIGHT
4.32m	JCB	4CX	8.178 Tonne
4.8m	Komatsu	WB97R-5E0	7.6 Tonne
4.883m	Caterpillar	432E	9.1 Tonne
6.14m	JCB	5CX	10.6 Tonne





## Skid Steer Loaders

CATEGORY	MAKE	MODEL	TIPPING LOAD (35%)
Tracked	Bobcat	T140SJC	635kg
Tracked	Caterpillar	239D	695kg
Tracked	Caterpillar	249D	790kg
Tracked	Caterpillar	259D	915 kg
Wheeled	Komatsu	SK714	650kg
Wheeled	Caterpillar	226B	680kg
Wheeled	Caterpillar	246C	975kg



## Telehandlers

LIFTING WEIGHT	MAKE	MODEL	LIFTING HEIGHT
3 Tonne	JCB	531-70	7000mm
3.2 Tonne	Manitou	MT732	6900mm
3.5 Tonne	JCB	535-95	9500mm
4 Tonne	JCB	541-70	7000mm
4 Tonne	Merlo	TF42.7-100	9500mm
4 Tonne	Manitou	MT-X 1440	13530mm
4 Tonne	Manitou	MT-X 1840	17550mm
6 Tonne	Merlo	P60.10EE	9550mm



## Forklifts

LIFTING HEIGHT	MAKE	MODEL	LOAD CAPACITY
3000 mm	Hyster	H4.0FT	4 Tonne
4000 mm	Hyster	H5.0FT	5 Tonne
5336 mm	Hyster	H8.00XM	8 Tonne
6200 mm	Hyster	H16.00XM	16 Tonne



## Cranes

MAKE	MODEL	WEIGHT	MAXIMUM BOOM LENGTH
Franna	MAC 25	25 tonnes	18.4m



## Articulated Boom Lifts

HEIGHT	MAKE	MODEL	CATEGORY
34 ft	JLG	H340AJ	Hybrid
34 ft	Genie	Z34 / 22 N	Electric
45 ft	JLG	450AJ	Diesel
45 ft	Genie	Z-45 XC	Rough Terrain
51 ft	Genie	Z-51 / 30J RT	Rough Terrain
62 ft	Genie	Z-62 / 40	Rough Terrain
80 ft	JLG	H800AJ	Hybrid
80 ft	JLG	800 AJ	Diesel
80 ft	Haulotte	HA26 RTJ PRO	Diesel
80 ft	Genie	Z-80 / 60	Rough Terrain
125 ft	JLG	1250AJP	Diesel
135 ft	Genie	ZX-135 / 70	Rough Terrain



## Scissor Lifts

HEIGHT	MAKE	MODEL	CATEGORY
19 ft	JLG	ES1932	Electric
19 ft	JLG	R1932	Electric
26 ft	JLG	R2632	Electric
26 ft	Genie	GS-2632	Electric
26 ft	Genie	GS2669 RT	Rough Terrain
32 ft	JLG	ES 3246	Electric
32 ft	JLG	R 3246	Electric
33 ft	Genie	GS 3369 RT	Rough Terrain
33 ft	Genie	GS 3384	Rough Terrain
33 ft	Snorkel	S3370 RT	Rough Terrain
40 ft	JLG	R 4045	Electric
40 ft	Genie	GS-4069 RT	Rough Terrain
43 ft	Genie	GS-4390	Rough Terrain
46 ft	Genie	GS-4655	Electric
47 ft	JLG	ERT 4769	Rough Terrain
53 ft	Genie	GS-5390	Rough Terrain



## Telescopic Boom Lifts

HEIGHT	MAKE	MODEL	CATEGORY
45 ft	Genie	S-45 XC	Rough Terrain
65 ft	Genie	S65 XC	Rough Terrain
80 ft	Genie	S-80 XC	Rough Terrain
85 ft	Genie	S-85XC	Rough Terrain
125 ft	Genie	SX-125 XC	Rough Terrain
135 ft	Genie	SX-135 XC	Rough Terrain
150 ft	Genie	SX-150	Rough Terrain



## Generators

POWER	OUTPUT	RUN TIME	WEIGHT
5 kVA	5.5 kW	15 hours	95 kg
10 kVA	8 kW	35 hours	700 kg
20 kVA	16 kW	18 hours	726 kg
45 kVA	36 kW	12 hours	1085 kg
60 kVA	48 kW	10 hours	1110 kg
80 kVA	64 kW	11 hours	1403 kg
100 kVA	80 kW	14 hours	1685 kg
150 kVA	120 kW	9 hours	2000 kg
200 kVA	160 kW	10 hours	2440 kg
255 kVA	204 kW	9 hours	2600 kg
300 kVA	240 kW	7 hours	3068 kg
350 kVA	280 kW	11 hours	4439 kg
400 kVA	320 kW	9 hours	4400 kg
450 kVA	360 kW	9 hours	4597 kg
500 kVA	400 kW	8 hours	4800 kg
600 kVA	480 kW	11 hours	5970 kg
670 kVA	536 kW	10 hours	5970 kg
750 kVA	600 kW	3 hours	9200 kg
800 kVA	640 kW	3 hours	10000 kg
910 kVA	728 kW	3 hours	11600 kg
1035 kVA	828 kW	2 hours	11680 kg
1253 kVA	1002 kW	2 hours	14100 kg
1505 kVA	1204 kW	2 hours	14050 kg
1705 kVA	1364 kW	1 hours	15500 kg
2000 kVA	1600 kW	1 hours	16000 kg

\*All Generators under 100 kVA are available on trailers.



## Diesel Pumps Highhead

INLET SIZE	OUTLET SIZE	Q MAX	MAX HEAD
100 mm	75 mm	40 L/sec	200 m
100 mm	80 mm	42 L/sec	92 m
150 mm	75 mm	50 L/sec	150 m
150mm	100 mm	80 L/sec	180 m
150 mm	100 mm	117 L/sec	101 m
200 mm	150 mm	167 L/sec	101 m
250 mm	200 mm	250 L/sec	70 m
250 mm	200 mm	408 L/sec	109 m



## Diesel Pumps Surface Dewatering

SIZE	Q MAX	MAX HEAD
80 mm	45 L/sec	19 m   open and silent option
100 mm	69 L/sec	36 m   open and silent option
100 mm	77 L/sec	50 m   open and silent option
150 mm	150 L/sec	37 m   open and silent option
150 mm	141 L/sec	51 m   open and silent option
All Pumps under 150 mm size are available on trailers		
200 mm	175 L/sec	30 m   open and silent option
200 mm	236 L/sec	50 m   open and silent option
300 mm	313 L/sec	29.5 m   open and silent option
300 mm	600 L/sec	71 m   open and silent option



## Submersible Pumps

TYPE   POWER	SIZE	Q MAX	MAX HEAD
Dewatering   1 kW	50 mm	10 L/sec	16 m
Dewatering   2 kW	75 mm	14 L/sec	24 m
Dewatering   3.4 kW	75 mm	23 L/sec	23 m
Dewatering   6.6 kW	75 mm	20 L/sec	38 m
Dewatering   8.8 kW	75 mm	28 L/sec	40 m
Dewatering   6.6 kW	100 mm	37 L/sec	25 m
Dewatering   8.8 kW	100 mm	45 L/sec	30 m
Dewatering   14 kW	100 mm	20 L/sec	65 m
Dewatering   22 kW	100 mm	40 L/sec	65 m
Dewatering   30 kW	100 mm	40 L/sec	86 m
Dewatering   22 kW	150 mm	95 L/sec	40 m
Sludge   3.7 kW	75 mm	20 L/sec	13 m
Sludge   9 kW	100 mm	28 L/sec	23 m
Sludge   11 kW	100 mm	42 L/sec	24 m
Sludge   15 kW	100 mm	22 L/sec	27 m
Sludge   37 kW	100 mm	80 L/sec	50 m
Sludge   45 kW	150 mm	124 L/sec	30 m
Sludge   75 kW	150 mm	155 L/sec	48 m
Slurry   3.1 kW	75 mm	15 L/sec	15 m
Slurry   5.7 kW	100 mm	25 L/sec	23 m
Slurry   8 kW	100 mm	28 L/sec	25 m





## Compressors

TYPE	AIR FLOW	DRY WEIGHT	PRESSURE
Trailer	127 cfm	700 kg	7 bar
Trailer	176.5 cfm	800 kg	7 bar
Skid	185 cfm	950 kg	7 bar
Trailer	251 cfm	1400	
Skid	400 cfm	1920 kg	10 bar
Trailer	423 cfm	2000 kg	7 bar
Trailer	530 cfm	2600 kg	10 bar
Trailer	893 cfm	3700 kg	8 bar
Trailer	938 cfm	5300 kg	12 bar
Trailer	1020 cfm	5300 kg	10.3 bar
Trailer	1102 cfm	5300 kg	8.6 bar



## Pump Accessories

Materials and Parts can be supplied at cost price + 20%

DN150 Standpipe   clearance 4.2m
DN150 Standpipe   clearance 4.8m
DN150 Standpipe   clearance 5.2m
DN150 Standpipe   clearance 5.8m
DN150 Standpipe   clearance 6.5m
DN150 Standpipe   clearance 8.6m
DN200 Standpipe   clearance 4.2m
DN200 Standpipe   clearance 4.8m
DN200 Standpipe   clearance 5.2m
DN200 Standpipe   clearance 5.8m
DN200 Standpipe   clearance 6.5m
DN200 Standpipe   clearance 8.6m
Hose & Cable Floats
HDPE pipe
Pontoons
Flow Meters
Suction Hose
Discharge Hose
Remote Monitoring



## Portable Buildings

TYPE	SPECIFICATIONS
Modified Containers	6.09m & 12.19m options, fully furnished
Portable Site Offices	8.6m x 2.5m x 3.45m, fully furnished
Portable Toilets and Showers	



## Lighting Towers Diesel & Solar

LAMP POWER	ILLUMINATED AREA	RUNNING TIME
1800 W	5000 / 500 m²	100 hours
4 x 320 W	4500 / 4200 m²	143 hours
4 x 320 W	5000 m²	218 hours
4 x 350 W	5000 m² @ 20 Lux	220 hours
4 x 350 W	5.4 lm /m² @ 28.328 m²	150 hours
6 x 350 W	315,000	145 hours
6 solar x 100 W	65,000	56 hours
2 solar x 100 W	14,000	35 hours



## Power Accessories

TYPE	SIZE	OUTLET
Distribution Board	32 amp	8 x 240V 15A   1 x 415V 20A   1 x 415V 32A
Distribution Board	63 amp	10 x 240V 15A   2 x 415V 20A   2 x 415V 32A
Distribution Board	125 amp	8 x 240V 15A   2 x 415V 32A
Power Cables	20 amp	cable length can be customised
Power Cables	32 amp	cable length can be customised
Power Cables	63 amp	cable length can be customised
Power Cables	100 amp	cable length can be customised
Power Cables	Hardwire	cable length can be customised
Load Banks	100 - 500 kW	in all application
Battery Pack	Atlas Copco ZBP45	

Control Panels, Soft Starters & Variable Speed Drivers are available



## Mobile Fuel Supply

TYPE	SIZE	COMMENTS
Fuel Tank	1000 L	Double bundled, multiple fuel connections
Trailer Mounted	1000 L	Double bundled, multiple fuel connections
Fuel Tank	2000 L	Double bundled, multiple fuel connections
Fuel Tank	4000 L	Double bundled, multiple fuel connections
Fuel Tank	10000 L	Double bundled, multiple fuel connections
Trailer Mounted	2000 L	Double bundled, multiple fuel connections

Plant Trailers, Tandem Trailers, Cage Trailers, Pressure Washer Trailers and Fire Fighter Trailer are also available for hire.



## Traffic Lights & Signage

CATEGORY	POWER SUPPLY
Traffic Lights	Nominal 12 Volts. Range 10.8 – 14.2V
Variable Message Signs	Nominal 12 Volts. Range 10.8 – 14.2V



## Solar CCTV Towers

MAKE	CAMERA	HEIGHT
Solareye	2x4MP acusense deep learning cameras, 50m night vision	4.5m



## Dust Suppression Fans

MAKE	MODEL	ELECTRICAL ENGINE POWER
Generac	DF 4500	4kW
Generac	DF 7500	7.5kW
Generac	DF 15000	15kW
Generac	DF 20000	20kW
Generac	DF 50000	45kW
Generac	DF 110000	100kW



## Commercial Vehicles

SEATS	MAKE	MODEL	CATEGORY
12	Toyota	Hiace	Mine Spec Bus
7	Toyota	Land Cruiser	Mine Spec 4x4 Wagon
7	Toyota	Prado	Mine Spec 4x4 Wagon
5	Toyota	Hilux	Mine Spec 4x4 Dual Cab Ute
5	Toyota	LC78 DC	Mine Spec 4x4 Dual Cab
2	Toyota	LC78 SC	Mine Spec 4x4 Single Cab
2	Toyota	Hilux	Mine Spec 4x4 Single Cab Tray Ute



## Machine Attachments

CATEGORY	ATTACHMENT	CATEGORY	ATTACHMENT
Excavator	GP Bucket	Skid Steer	GP Bucket
Excavator	Batter Bucket	Skid Steer	Rake Bucket
Excavator	Trenching Bucket	Skid Steer	Forks
Excavator	Skeleton Bucket	Skid Steer	Bucket Broom
Excavator	Sieve Bucket	Skid Steer	Auger
Excavator	Screening Bucket	Skid Steer	Trencher
Excavator	Trapezoidal Bucket	Skid Steer	Levelling Attachment
Excavator	Tilting Bucket	Skid Steer	GPS
Excavator	Rock Breaker		
Excavator	Auger	Telehandler	GP Bucket
Excavator	Misu Heavy Duty Screen	Telehandler	Batter Bucket
Excavator	GP Grapple	Telehandler	Forks
Excavator	360° Grapple	Telehandler	Jib
Excavator	Rock Grapple	Telehandler	GPS
Excavator	Hydraulic Grapple		
Excavator	Mechanical Grab	Backhoe	GP Bucket
Excavator	Hydraulic Grab	Backhoe	Trenching Bucket
Excavator	Sleeper Grab	Backhoe	Batter Bucket
Excavator	Plate Compactor	Backhoe	Batter Bucket (Digger)
Excavator	Compaction Wheel	Backhoe	Auger
Excavator	Tree & Stump Mulcher	Backhoe	Forks
Excavator	Ripper	Backhoe	GPS
Excavator	GPS		
		Grader	Roller
Tool Handler	GP Bucket	Grader	GPS
Tool Handler	Rake Bucket		
Tool Handler	Stemming Bucket	Tractor	Grid Roller
Tool Handler	Grain Bucket	Tractor	Hydraulic Angle Broom
Tool Handler	Forks		
Tool Handler	Jib		
Tool Handler	Log Forks		
Tool Handler	Man Cage		
Tool Handler	Tyre Grab		
Tool Handler	GPS		



# BUY NOW WITH FINANCE

and take  
advantage of the

## INSTANT ASSET WRITE OFF

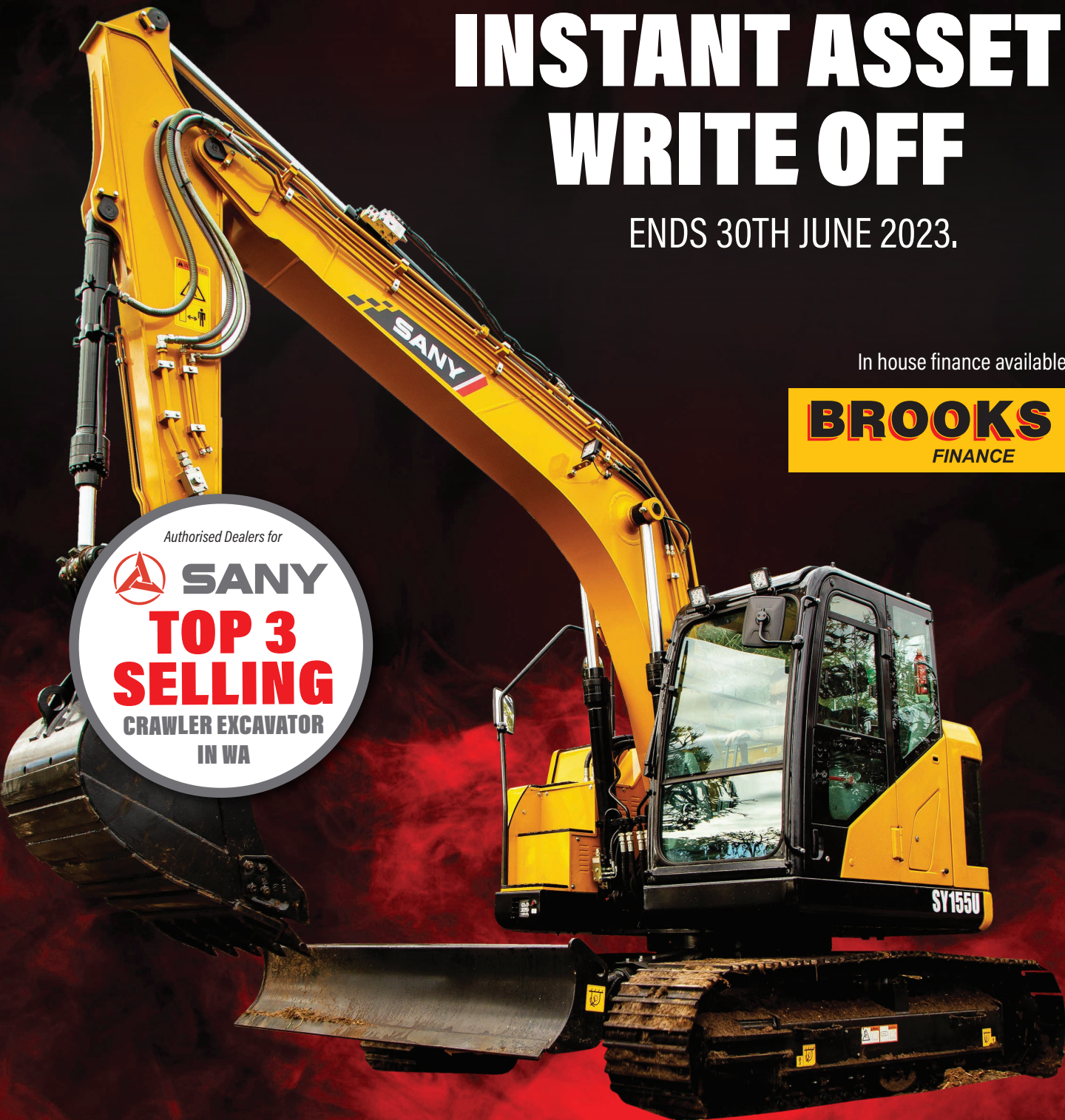
ENDS 30TH JUNE 2023.

In house finance available

**BROOKS**  
FINANCE

Authorised Dealers for




 **SANY**  
**TOP 3**  
**SELLING**  
CRAWLER EXCAVATOR  
IN WA



\*Conditions apply. Please check with your accountant or the ATO website for full details.  
Finance is available on any machine in Australia. Sany excavator sales are limited to WA and NT.

Authorised Dealers for  **SANY**

**BROOKS**  
EQUIPMENT

 1300 BROOKS (1300 276 657)  
 [sales@brooksequipment.com.au](mailto:sales@brooksequipment.com.au)  
 [www.brooksequipment.com.au](http://www.brooksequipment.com.au)