

YOUR FREE COPY

THE *Eneabba*

SPRING 2025 ISSUE 22

Mission Accomplished

BROOKS AIRWAYS BRINGS BIGGER WINGS



- Top Tier Civil Service
- The Future of Fast Charging
- Glad to Be in Town - New Branch

The story of *Eneabba*



When 23-year-old Doug Brooks recognised an opportunity to hire out equipment to the WA mining industry in 1979, he knew it was something he had to pursue. Doug scrambled together every dollar he had, to purchase two disassembled compressors, with the remainder of the bill being settled by bankcard. He opened 'Brooks Hire Service' and ran the business from a shed in the remote WA town of Eneabba. All the while, Doug was living in a 'humpy' at the rear of the shed. There were many that warned him of the difficulty of starting a new business in a very competitive industry, but Doug was determined and it was only a matter of time before he was turning a profit on his compressors. What started as two compressors on hire, soon turned into twelve pumps on hire, but the turning point came when Doug purchased his first piece of mobile equipment: an eight tonne JEC crane. There are many great stories that came out of that shed in Eneabba. It was the foundation of Brooks Hire and the place where all of the 'hard yards' were done. Eneabba is remembered as the birth place of Brooks Hire Service.

Your first choice for

MEDICAL AIR AMBULANCE **Flights**

Medical Air is an accredited provider of national and international medical evacuation flights.

- 6 x Intensive Care Unit (ICU) fitted Learjets
- Australian doctors, medical staff, and pilots on standby
- To and from any country to anywhere in Australia
- Complete bed to bed transfers, including visas
- Private and insurance funded flights



☎ 1300 MED AIR (633 247)
@ medical@medicalair.com.au
🌐 medicalair.com.au

MEDICAL AIR AMBULANCE



From the MD...

With 2025 already charging ahead, I've taken a moment to pause and reflect on the achievements we've celebrated this year. As a group, Brooks has reached some remarkable milestones. Among the highlights were the purchase of a new aircraft for Brooks Airways, the acquisition of four new branches in Ascot (WA), Orange (NSW), Newcastle (NSW), and Gladstone (QLD), and taking our first XCMG clients abroad to tour the XCMG manufacturing floor in China. We also hosted our inaugural Brooks Equipment Dig Day - a resounding success - and were proud to see Brooks Hire named a finalist in the HRIA Industry Awards. None of this would have been possible without the commitment of our management team, employees, and customers working together.

As we enter the final quarter of the year, the pace shows no signs of slowing. We are currently undertaking the significant task of extending our ISO verification across all Australian branches. This involves a comprehensive review and update of signage, safety standards, processes, and procedures to ensure full compliance.

On the events front, Brooks Equipment and XCMG are once again proud to serve as the major sponsor of the CCF WA President's Golf Day. We also look forward to celebrating National China Day with the ACBC, and continuing our 23-year tradition of Gold Sponsorship for the Ronald McDonald House Charities Gala Ball.

Finally, I'm excited to share that Brooks will be launching a new division in December. This has been in the works for some time and represents an exciting expansion of our services within the mining and construction industry. Stay tuned for more information.

Stuart Brooks

Stuart Brooks
Managing Director



- 03 Mission Accomplished**
Brooks Airways brings bigger wings



- 05 The Future of Fast Charging**
Launch of UON's SMART™ DC-FC



- 06 Glad to Be in Town**
Brooks opens 29th branch in Gladstone, QLD



- 07 Rock Solid Roots**
Carbone Bros build on strong foundations



- 09 Built on Grit**
Aestec Services celebrates 20 years



- 11 Diggers and Dealers**
Where all that glitters is gold



- 13 Top Tier Civil Service**
ROBAR integrates five specialised divisions



- 15 Structural Statements**
Painting Albany's Ring Road



- 17 Building Data Infrastructure**
Project Southgate

BROOKS

CONTACT DETAILS

Brooks Hire Service Head Office

30 Coulson Way
Canning Vale WA 6155

Phone: 1300 276 657

Email: sales@brookshire.com.au

www.brookshire.com.au

The Eneabba is a Brooks Hire Service Pty Ltd publication. All photographs and written articles remain the property of Brooks Hire Service Pty Ltd. No reproduction in whole or in part of this publication is allowed without the permission of the Managing Director.

If you would like to make a submission, please email marketing@brookshire.com.au

Digital Distribution 14,966
Printed Copies 5,000



- 19 Doing it Different**
Doolee's self-performing edge



- 21 Having a Field Day**
Seeding connections, growing industry



- 22 Digging Deep for Charity**
The Big Dig & Big Yellow Pipeline Challenge



- 23 New Machines**
See what's rolling into the yard

- 25 Events and Exhibitions**
Out and about with Brooks

- 27 Brooks Around the Nation**
Branch news from around the country

- 29 Welcome Aboard**
Meet the new faces at Brooks

- 31 The Puzzler Page**
Flex your brain over a cup of coffee

- 33 Snap That**
Staff photography competition

- 35 Equipment Hire List**
View our entire fleet, with specs

Mission Accomplished

Brooks Airways brings bigger wings

Earlier this year, Brooks Airways increased its fleet with the addition of a Beechcraft 1900D twin-engine, turboprop aircraft. Designed for regional and commuter operations, and certified to carry up to 19 passengers, it marks a significant milestone for the Brooks Airways division.

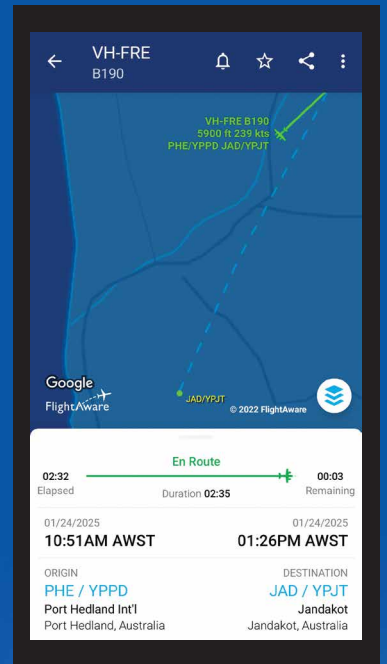
The Beechcraft 1900D features a fully pressurised and air-conditioned stand-up cabin with an airline-style, single-aisle layout, offering each passenger both a window and an aisle seat. With a cabin height of 1.8 metres (5ft 11in), the aircraft offers enhanced passenger comfort, while a 55-cubic-foot cargo hold provides ample space for baggage and operational equipment.

VH-FRE was purchased from Hanseo Aviation University and underwent comprehensive overhauls of both PT6A-67D engines, the undercarriage, and the propellers, as part of the purchase conditions. It then embarked on a four-day ferry flight commencing in South Korea with stopovers in Japan, the Philippines, Indonesia, and Port Hedland before arriving at Jandakot Airport on Friday, 24th January, 2025. Doug, Stuart, and little Domy Brooks, and the Brooks Airways team, eagerly awaited the new arrival from the ground.

Getting Ready for Takeoff

Upon arrival in Western Australia, the aircraft was delivered to Textron Aviation Australia - a subsidiary of the original U.S. manufacturer - for its Certificate of Airworthiness (CoA). This certification process involves a thorough review of all maintenance records and service bulletins, as well as inspections of aircraft configuration and avionics, to ensure full compliance with Civil Aviation Safety Authority (CASA) regulatory requirements.

As part of the CoA preparation, Brooks Airways' in-house engineering team at Jandakot Airport installed a new avionics suite, including a built-in HF radio, and completed a partial interior refurbishment, which included new cabin carpeting, rejuvenated passenger seats, and upgraded crew seating. The aircraft was then repainted in the distinctive Brooks Airways livery, ready to begin service on our FIFO charter network.





The Key Advantages

The Beechcraft 1900D offers short-field performance comparable to other turboprops, but its standout advantage lies in its higher passenger capacity and stand-up cabin - features that are uncommon among smaller turboprops. This significantly enhances passenger comfort and sets it apart in its class.

Renowned for its exceptional operational flexibility, the 1900D is well-suited for regional routes and diverse mission profiles. Additionally, it boasts relatively low operating costs for an aircraft of its type, thanks largely to its highly reliable Pratt & Whitney engines. These qualities make the Beechcraft 1900D a distinct and highly valued aircraft in the regional turboprop market.

"VH-FRE is a real asset to our fleet," said Brooks Group Managing Director, Stuart Brooks. "We've now got the capacity to fly larger FIFO groups to remote worksites. Where our Beechcraft 200s could only fit 9 passengers, the 1900D fits 19 passengers."

Performance Meets Versatility

The key performance parameters of the Beechcraft 1900D centre on its ability to operate from short and gravel runways making it an ideal choice for Fly-In Fly-Out (FIFO) operations to remote mine sites across Western Australia and beyond.

"The 1900D easily maintains a reasonable cruising speed and range," explains Brooks Airways Head of Flying Operations, Andrew Capuana. This makes it the perfect option for travel between Perth, the Goldfields, Midwest, Pilbara, and Kimberley mining regions.

Get Your Engines Running

The Beechcraft 1900D is powered by two Pratt & Whitney Canada PT6A-67D turboprop engines, each flat-rated at 1,279 shaft horsepower (SHP). This engine is known for its durability, reliability, and performance in regional and utility aviation.

For the aviation fans out there, the aircraft features 'Free Turbine Design' engines, meaning the two primary rotating sections (the gas generator and the power turbine) are not mechanically connected:

- **Gas Generator Section:** Includes the compressor, combustion chamber, and gas generator turbine. It draws in air, compresses it, mixes it with fuel, and ignites the mixture to create high-energy exhaust gases.
- **Power Section:** Uses the exhaust gases from the gas generator to spin the power turbine, which in turn drives the propeller through a reduction gearbox.

"This configuration allows for independent starting of the gas generator without propeller rotation," explains Andrew Capuana. "This in turn gives better engine responsiveness and efficiency across different power settings."

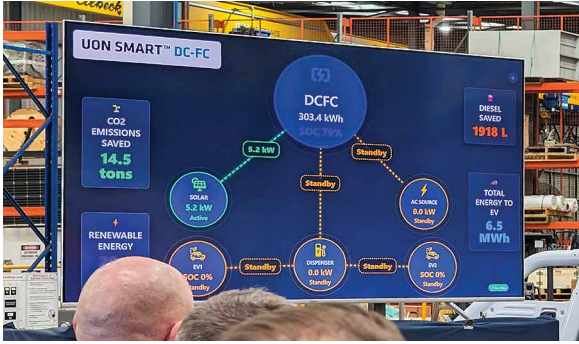
The Stats

Maximum Speed	280 knots (518km/h)
Cruise Speed	around 260 knots
Maximum Altitude	25,000 feet (7,600m) above mean sea level
Maximum Range	1200 nautical miles
Typical Range with 19 Passengers	600 nautical miles
Maximum Take-Off Weight	7,766 kilograms
Maximum Landing Weight	7,604 kilograms



VH-FRE is now in service and operating daily flights across Western Australia. It is also available for long-range flights, Australia-wide. Clients can book the aircraft for private and corporate charter flights, or FIFO and mining industry flights.

To find out more, or book a flight on VH-FRE, call 1300 247 929, or go to brooksairstways.com.au



The Future of Fast Charging

Launch of UON's SMART™ DC-FC

On a Friday afternoon in August, UON showcased the future of sustainable energy for the mining and construction industries, at their Smart Solutions Expo in Perth. The event unveiled the company's latest innovation: the SMART™ DC Fast Charger (DC-FC).

Founded in Western Australia, UON has built a strong reputation delivering integrated energy solutions for the mining and construction sectors. The company's SMART™ range includes products that are prefabricated, fully wired, skid-mounted, and ready for rapid deployment.

Designed for off-grid and grid-constrained EV infrastructure, the DC-FC is a scalable, high-performance solution built to endure Australia's toughest conditions.

UON Executive Chairman, Mark Keogh, explained how the DC-FC operates: "We're taking DC by way of PV and we're storing that energy in batteries and then we're using that energy to fast charge vehicles."

Referring to the DC-FC system on display, Keogh noted that when sunlight is sufficient, solar energy flows directly through without drawing on the battery. "In this box here, we have 384kW hours, which is about 190kW for an hour."

This integration of solar PV, battery storage, and a backup generator allows the DC-FC to operate flexibly without relying on constant grid access.

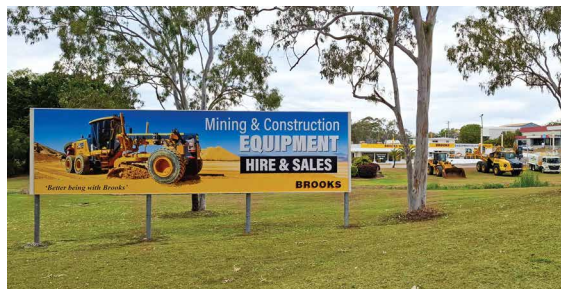
Crucially, the generator only activates when necessary - a significant point of difference from many competitors on the market.

Also setting the DC-FC apart, is its modularity and scalability. It can start with just one 200kW charging dispenser, expandable up to 12 dispensers with outputs reaching up to 500A DC. UON is currently developing configurations of up to 1MW in a 10ft container, showcasing the system's future-ready potential.

Other key features, include the utilisation of liquid-cooled technology for use in temperatures up to 50°C without derating, an IP65 rating for dust and water ingress, and a Cyclone D wind rating. CCS2 charging compatibility allows it to easily power a wide range of heavy-duty EVs, from trucks to plant equipment. Delivered prefabricated and skid-mounted, it can be deployed on site within 48 hours of leaving the factory.

Having put the system to the test in WA's Pilbara region, E-mobility Specialist at Scania Australia, Andreas Jonsson Viinikka, backed its performance. "The environment is killing things out there and we needed a proven, reliable sourcer. If the charger breaks down, every OEM here knows that it's the truck that gets blamed," he said. "Finally, we have a good charger."

Lead times for the new DC-FC are currently around six months.



Glad to Be in Town

Brooks opens 29th branch in Gladstone, QLD

In 2018, Doug Brooks was touring through the Central Queensland Region, when he happened to pass a property at 1 Gladstone Benaraby Road, Gladstone. He was immediately taken with the premises and earmarked it as a possible future location for Brooks Hire. The property was not on the market at the time, however Doug pulled out his mobile phone and took some photos for future reference. Some seven years later, in 2025, when the property did become available for sale, Doug was quick to act.

Gladstone is a coastal city approximately 90 kilometres south of Rockhampton on the central Queensland coast. Known for its spectacular beaches and pristine national parks, the area is also a significant mining hub, primarily for coal and alumina. Coal mines in the Bowen Basin are connected by the Blackwater Rail System to the Port of Gladstone for export. Additionally, Gladstone is home to alumina refineries like Queensland Alumina Limited (QAL) and Rio Tinto's Yarwun Refinery.

The Port of Gladstone is the fifth-largest multi-commodity port in Australia, and the world's fourth-largest coal-exporting terminal. Major exports include coal, alumina, aluminium, cement products, sodium cyanide, and ammonium nitrate. Each year, 50 million tonnes of coal passes through the port, making up 70 percent of the total exports.

The new Brooks Gladstone branch is located in a highly visible, premium corner position, arguably one of the busiest intersections in Gladstone. The site spans over seven titles with a substantially sized combined area of 17,300 square metres. Featuring two workshops, nine offices, a boardroom, showroom, spare parts department, and large hard stand vehicle storage area, the property is perfect for the Brooks divisions to share, including the Hire department, XCMG Equipment Sales, Parts, Site Services, and Access.

National Operations Manager, Ryan Brown, and North East Operations Manager, David Morrow, were responsible for the primary takeover and set up at the new branch. Gladstone local, Shaun Mann is the Workshop Foreman, and the main point of contact for the branch.

Brooks Gladstone is now in full swing with a range of earthmoving and construction machinery available for hire. New machines, and equipment from other branches has been transported to the region and is ready to go to work. For those who are looking to buy, there is also an extensive range of brand new XCMG construction equipment available for sale.

Drop in and say hello to Shaun when you're in the area.

1 Gladstone Benaraby Road, Gladstone QLD 4680.



Rock Solid Roots

Carbone Bros build on strong foundations

With deep roots in Western Australia's South West, Carbone Bros has grown into a trusted name as a full-service civil construction and quarrying company. With a focus on practical delivery and a commitment to quality, the family-owned business continues to expand while staying true to its local values. We sat down with the team to learn more about the company's journey, its challenges, and what lies ahead.

How has Carbone Bros evolved over the decades?

Founded over 60 years ago with a small petrol engine, single axle truck, the Carbone Bros story began with carting produce from Bengier to the Brunswick Junction train lines for market, and milk cans from local dairy farmers to Peters Creamery in Brunswick.

Over time, the business expanded into a trucking fleet, delivering building materials across the South West in tip trucks. Progressively, the fleet grew from six-wheelers to multi-combination road trains.

Recognising the importance of supply security, we entered quarry operations, manufacturing and delivering our own materials throughout the South West and beyond. Delivering these materials revealed another opportunity: offering installation and shaping services at the project site. This led to the creation of our civil division, providing a one-stop solution for government, commercial, residential, and private projects, covering all aspects of civil construction.

What sets your operations apart?

It's our true one stop shop approach. We maintain full control over quality from supply through to delivery, installation, and the final product. We itemise each stage of work, giving clients clear cost visibility to budget and plan effectively.

As a small family-owned business, we bring passion and commitment to everything we do. When your heart is in your work, your clients feel the difference - our dedication directly translates into exceptional results in every project we undertake.

How do you overcome operational challenges and how do you maintain quality, compliance, and supply continuity?

Running a business always comes with day-to-day operational challenges, but having a strong, experienced team around you makes all the difference. We're proud to have team members who've been with us for 15 to 35 years. Retention like that is truly special.

We maintain strict quality and compliance through rigorous quarry testing and crushing audits to ensure our products meet the highest standards. Consistent fleet servicing and safety checks are supported by external audits of our on-road accreditation. In civil construction, we ensure QA through testing of each pavement and construction layer, random on-site material sampling, survey data, and detailed ITP documentation.



Being a one-stop shop gives us unmatched flexibility. Whether a client needs one truck or ten, we can make it happen with a phone call, ensuring continuity and reliability every time.

Working across a wide range of sectors, how do you adapt to meet the unique needs of each industry?

We adapt by first understanding the priorities of each sector. For local government, it's about community outcomes and compliance; for mining, safety and efficiency; and for commercial projects, cost and delivery.

By tailoring our approach to those needs, we deliver reliable outcomes while keeping our service consistent in quality.

Can you tell us about a recent project Carbone Bros has been involved in? What made it particularly notable or rewarding?

A recent project involved upgrading a narrow 4km road to a 6m wide, sealed, dual-use roadway with parking, safety railings, and stormwater infrastructure. The scope included excavation and cut-to-fill works, 10,000t of basecourse gravel, two-coat bitumen sealing, over 1,300m of kerbing and W-beam guardrails, and replacing old stormwater pipes with RCP class 4 drainage.

What made this project notable was the range of challenges we managed. We needed to clear large trees while protecting ecosystems, which meant engaging fauna and flora spotters and Indigenous monitors in culturally sensitive areas. We also dealt with weather constraints, bushfire risks, large rock formations, and erosion risks.

To overcome these, we used advanced rock excavation techniques, a custom MRWA-compliant basecourse with moisture resistance, erosion control measures, and flexible scheduling using predictive weather analytics. We also ensured smooth delivery through NATA-accredited testing, and secure, transparent subcontractor payments via a Project Bank Account.

It was extremely rewarding due to its complexity and the creative problem-solving required. Seeing it completed to a high standard, fully compliant, and positively received by the Shire and community reinforced our commitment to quality, safety, and environmental responsibility.

Having purchased an XCMG XE155UCR excavator from Brooks Equipment, what role will this machine play, and what made it the right choice?

The XCMG XE155UCR excavator will play a key role in our civil works, detailed excavation, and drainage projects. We've hired XCMG machines from Brooks in the past and found them reliable and robust.

A big factor in our decision was the Cummins engine, which aligns to our already run Kenworth fleet, making maintenance and operation simpler. Ultimately, if Doug Brooks has the confidence to place these machines in his hire fleet across Australia, that speaks volumes, and that trust was enough for us to make the purchase.

What's on the horizon for Carbone Bros?

At Carbone Bros, we're always looking just beyond the horizon. Right now, we have a mix of exciting civil and infrastructure projects in the pipeline - from large-scale earthworks for new industrial and agricultural developments, to urban upgrades that directly impact local communities.

We're also looking to expand our capital works programme, with new acquisitions in the pipeline. All I can say for now is... watch this space!

What really excites me is that every project challenges us to innovate while staying true to our commitment to quality and safety. The future is about growth, smart solutions, and leaving a tangible mark on the South West, while still having a little fun along the way!





Built on Grit

Aestec Services celebrates 20 years

This year, Aestec Services proudly marked its 20th anniversary with a week of celebrations. The events brought together employees, clients, and community partners who've been part of the journey.

For two decades, Aestec Services has built a legacy in Gladstone's civil construction industry, delivering bespoke solutions to major projects, working across major industrial sites, and contributing to the development of the region.

Big Jobs, Bigger Impact

Offering a diverse range of civil construction services, Aestec Services provides custom project management solutions to support their clients. Their focus is enabling clients to continue with the work they do best, while Aestec's team is on-site and handling the rest. Over the years, they have applied this approach to a wide range of projects across the region.



Among these, was a major local project completed this year in the renewables sector. This involved significant bulk earthworks, including nearly 50,000 cubic metres of cut-to-fill. The project encompassed extensive underground services, including 9 kilometres of electrical and communications conduits, multiple electrical pits, and intricate pipework for numerous systems.



Structural works were another major component of the project, with 2000 cubic metres of structural concrete, hundreds of tonnes of reinforcement, more than 200 piles installed, and extensive excavation and backfill. The package also included major storm-water infrastructure, with culverts, deep chambers, and over a kilometre of rock-pitched drains up to six metres wide.

This project required construction activities to be carried out concurrently with ongoing design development. Aestec's project team managed this challenge through a flexible and adaptive approach to planning, ensuring continuous availability of work fronts and materials to maintain progress against tight deadlines. They effectively navigated multiple design standards, including TMR, client-specific requirements, Australian regulations, and designer specifications, requiring rigorous coordination and interpretation across disciplines.

Backing Local Industry

Aestec has boots on the ground at some of the region's biggest sites, with permanent onsite teams managing ongoing maintenance at many of the region's major industries, including QAL, Rio Tinto Yarwun, and NRG. Project teams are permanently based across multiple sites as well, completing specialised civil construction projects.

Alongside its construction and maintenance services, Aestec has continued to invest in specialist equipment to support industry needs. They operate a fleet of modern vacuum trucks which play a vital role in keeping projects and essential infrastructure running smoothly, and assist the Gladstone Regional Council.

Aestec's specialties include:

- | | |
|--------------------------|---------------------------|
| ■ Earthworks | ■ Plumbing |
| ■ Gas fitting | ■ Sheetmetal & insulation |
| ■ Concreting | ■ Fabrication |
| ■ Mechanical works | ■ Asbestos removal |
| ■ Carpentry | ■ Pipe laying |
| ■ Transport & vac trucks | ■ Ship cleaning |
| ■ Maintenance | |

Investing in People

Aestec's proudest achievement is its people, with over 300 local employees from a wide range of trades and skill backgrounds. A central part of their workforce development is their Apprenticeship Programme, which plays a vital role in supporting the sustainable growth of the region's workforce.



"We're proud to have supported over 35 apprentices in achieving trade qualifications, many dual-trade certified, and many more still in training," Director, Doug Deakin shared.

Their first apprentice, Nathan Parnaby, is approaching his 20-year anniversary with Aestec Services. Now Aestec's Projects Planning and Implementation Manager, his upcoming anniversary represents a proud milestone for the company's history.

Building a Stronger Community

Aestec's impact goes beyond the job site. Over the years, they've backed local events, charities, and causes that make a real difference. The anniversary was an opportunity to reflect on these initiatives, including:

- Gladstone Engineering Alliance (GEA): A proud sponsor of GEA for eight years, Aestec is presenting their annual Major Industry Conference and Awards Night, which showcases the region's capabilities.
- CQShines: Helping secure the final funds to introduce life-saving Teladoc technology at Gladstone Hospital. This system connects with specialists across the country in critical moments, improving healthcare access for regional Queenslanders.
- Boyne Tannum HookUp: This eight-year sponsorship is another highlight – Australia's biggest family fishing competition, drawing thousands of entrants and visitors, and boosting small businesses and local tourism.



As Director Doug Deakin said, "Our purpose is our people, and for us, this is our team, our clients, and the people in our community."

With 20 years behind them, Aestec is looking ahead to their next chapter supporting the region's future.



Diggers and Dealers

Where all that glitters is gold



The Diggers and Dealers Mining Forum is without a doubt, one of the most significant events in the Australian mining industry calendar. Held annually in the outback Goldfields city of Kalgoorlie, Western Australia, the convention attracts upwards of 2,700 major mining players including executives, financiers, brokers, analysts, government officials, suppliers, and media from all over the globe.

The event provides a unique opportunity for industry professionals to meet and network, visit regional mine sites, engage with media, raise finance, invest in projects and generally engage with the resources sector at an executive level.

Kalgoorlie's location is central to the event's appeal. One of Australia's richest goldfields, it was discovered in the 1890s by Paddy Hannan, Tom Flanagan, and Daniel Shea. Known as 'The Golden Mile', the gold rush rapidly transformed it into a bustling town.

Today, Kalgoorlie is famed for the Super Pit, one of the world's largest open-cut mines. With about 30,000 residents, the city fills to capacity during the Diggers and Dealers Forum. Hotels book out months ahead, and some locals rent their homes for the week.

Diggers and Dealers lived up to all expectations in 2025. Held over 3 days, from the 4th to the 6th August, full delegate tickets were a sell-out, reaching full capacity well before the closing deadline for registration.



Russian Jack, an early prospector walking from Perth to the Goldfields (nearly 600km), circa 1893. Photo courtesy of West Australian Newspapers and uncredited images from archival and contemporary sources.





Each year, the forum kicks off with prominent figures in mining, economics, or politics delivering stand-alone keynote addresses, offering insights into global trends, policy developments, and industry forecasts.

This year, the keynote session broke from tradition, taking the form of a panel discussion. The panel was moderated by Tom Switzer, Executive Director at the Centre for Independent Studies, with support from Aiden Morrison, Director of Energy at the Centre for Independent Studies, and Dr. Chris Keefer, President of Canadians for Nuclear Energy.

On what would be a controversial topic, the panel backed nuclear energy, downplaying the capacity for renewables and green hydrogen to take precedence over traditional fuels, and casting doubt on Australia's ability to meet its Net Zero target by 2050.

Following the panel discussion, around 65 mining and exploration companies gave corporate presentations including updates on their operations, discoveries, and future plans. These presentations are a central part of the forum, giving investors and stakeholders insights into company strategies and performance.

Another important feature of the Forum, is the Topdrill Charity Sundowner on the eve of Diggers and Dealers. Kalgoorlie-based drilling contractor, Topdrill, hosts the event to raise money for the Royal Flying Doctor Service and Full Circle Therapies. This year, the catering team made the journey to Kalgoorlie on a Brooks Airways Beech B200 Super King Air. The event raised a whopping \$170,000.

An extensive trade exhibition runs alongside the forum, with over 150 booths showcasing the latest technology, equipment, and services in mining and exploration - from drilling services, to software solutions and heavy machinery. Exhibition space is like gold itself, with existing exhibitors getting first option to retain their space from the previous year. Being such a successful event, highly coveted exhibition spaces rarely, if ever, become available.

Amongst the 2025 Diggers and Dealers attendees was Stuart Brooks, Managing Director of Brooks Group Australia, and Katelyn Gibson, Hire Team Manager (West) of Brooks Hire. As full delegates, Stuart and Katelyn had access to all three days of the forum, plus the three evening socials, the Cocktail Party, Traditional Bash, and Gala Dinner.

Part of the attraction of Diggers and Dealers is the unique opportunity for attendees to visit mine sites during their stay in the region. Stuart and Katelyn took advantage of this offer, visiting the Super Pit where they were able to witness the massive scale of the gold mining operation first hand. As a member of the WA Mining Club, Stuart was also invited to attend the WA Mining Club Diggers & Dealers Lunch on the final day of the convention.



When asked about her experience at Diggers and Dealers 2025, Katelyn exclaimed, "The event in general is so well organised. It was a great opportunity to put faces to the names I speak to daily." Whilst in Kalgoorlie, Katelyn also had the opportunity to spend some time with Hire Coordinator, Mathew Abraham at the Brooks Kalgoorlie branch.

With another Diggers and Dealers done and dusted, Kalgoorlie has turned its focus back to its primary goal - gold production. For those in the mining industry that haven't experienced this event before, we'd recommend getting your registrations in early. Described as a networking opportunity not to be missed, Brooks is certainly looking forward to attending Diggers and Dealers 2026.

Top Tier Civil Service

ROBAR integrates five specialised divisions

ROBAR Civil Group began over a decade ago with a clear vision: to simplify the complexity of delivering large-scale civil, renewables, and infrastructure projects. What started as a specialised civil contractor has evolved into a fully integrated, engineering-led business with five distinct divisions: ROBAR Civil, ROBAR Energy, ROBAR Rentals, ROBAR Personnel, and SureScan. Each division brings its own expertise yet works seamlessly together to deliver projects of any size or complexity.

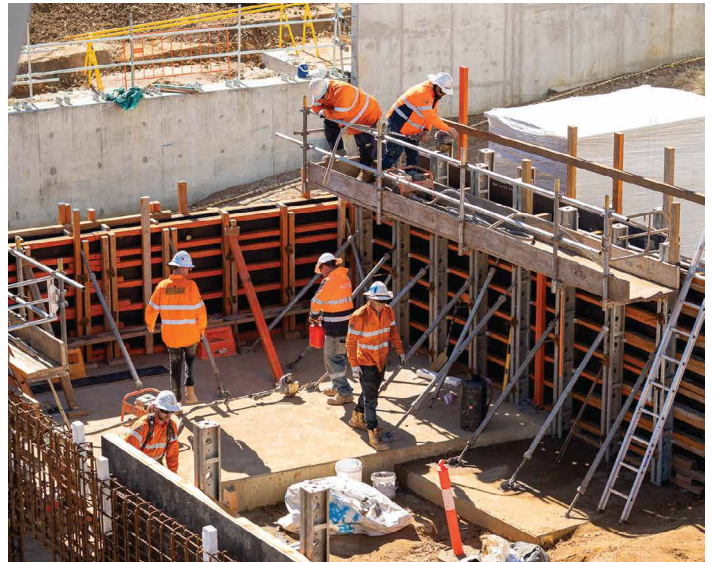
Today, ROBAR operates nationally, with offices in Queensland and South Australia, a modern fleet of equipment, and a strong track record of working with Tier 1 contractors across construction, mining, renewables, defence, rail, and infrastructure.

A Civil Offering

ROBAR offers an end-to-end service model, providing everything from planning and engineering to execution, labour, and specialist plant hire. Key services include:

- Civil construction across infrastructure, renewables, defence, rail, bridges, drainage, and wastewater.
- Self-perform civil and structural works for large-scale and remote projects.
- Modern plant and equipment fleet for wet or dry hire project specific solutions.
- Skilled labour and resource hire for project specific solutions.
- Non-destructive structural investigation, defect analysis, and advanced scanning technology for quality assurance.

By keeping these capabilities in-house, ROBAR minimises reliance on subcontractors, maintains tighter control over schedules and costs, and provides clients with one accountable delivery team.



Nationwide Projects

More recently, ROBAR has worked across a diverse range of infrastructure and renewable projects, including:

- Harwood Bridge – NSW
- Bayswater Level Crossing Removal - VIC
- Wagerup BESS (Battery Energy Storage System) - WA
- Flinders Link – SA
- Wollar Solar Farm - NSW
- Waterfall Railway Station - NSW
- Queensland Rail Station Upgrades - Banyo, Lindum, Morning-side, and Buranda

The Waterfall Project presented major challenges, including COVID restrictions, severe weather, and difficult ground conditions. These were successfully managed through a strong team effort, with close collaboration between ROBAR, the client, and supply chain partners to overcome the complexities.

On Time, Every Time

ROBAR takes an engineering-led approach to planning, with detailed scheduling from the earliest project stages. By combining in-house project management, civil and structural teams, and plant hire, ROBAR controls critical path activities without waiting on external suppliers. Their self-perform capability reduces dependency on subcontractors, while integrated, ISO-certified quality, safety, and environmental systems ensure smooth coordination between all parties. Regular progress tracking, real-time reporting, and proactive issue resolution further keep projects on schedule.

Environmental Leadership - Positive Change

Sustainability is embedded in ROBAR's operational systems, supported by ISO 14001:2018 Environmental Management Certification.

Measures include:

- Careful planning to reduce site disturbance and optimise resource use.
- Modern, low-hour plant and equipment fitted with emission-reducing technologies.
- Waste minimisation strategies, including material recycling wherever feasible.
- Stringent erosion and sediment control measures on all sites.
- Compliance with environmental legislation and project-specific sustainability requirements.

By integrating environmental considerations into every stage of delivery, ROBAR ensures projects meet both performance and sustainability objectives.

One Team - One End to End Solution

At ROBAR, it's simple: one contact, one accountable team, five specialised divisions. They have the expertise, resources, and proven systems to deliver every project safely, on time, and to specification. ROBAR's repeat work with Tier 1 contractors is a testament to the trust they've earned over the past decade, and their commitment to training and employing local workers helps strengthen the communities where they operate.



To learn more, visit
www.robargroup.com.au





Structural Statements

Painting Albany's Ring Road

Over the past five years, Albany's surrounding roads have seen major upgrades, in the Australian and Western Australian Governments' Albany Ring Road Project. Now near completion, final works are set to wrap in 2026.

The largest road infrastructure project in WA's Great Southern region, Albany's Ring Road was first considered back in 1997 when the City of Albany selected a route and included it in the town planning scheme. Years later, a study was conducted in 2008 to identify the preferred route and access strategy. By 2015, the 2008 plan had been revised to accommodate changes in interchange options, and road and rail interface requirements. Five years later and 30 years since its initial conception, construction began in 2020.

Project Scope

With hundreds of trucks travelling to and from the port each day, and numbers increasing significantly during the harvest season, the project saw the construction of an 11-kilometre, free-flowing road to bypass the city centre of Albany, diverting heavy vehicles from local roads like Albany Highway, South Coast Highway, and Chester Pass Road.

Three grade-separated interchanges were introduced at Albany Highway, South Coast Highway, and Hanrahan Road, and a new bridge constructed from Hanrahan Road to Frenchman Bay Road. Home to a large cycling community in Albany, a new shared path was also created on the Frenchman Bay Road Bridge, to link the Torndirrup Peninsula with the existing network north of the freight rail line.

Since opening, the Ring Road has been named 'Menang Drive', in recognition of the area's Traditional Owners, the Menang Noongar people. Still to come, is a new flyover at the intersection of Menang Drive and Chester Pass Road.

Art in Infrastructure

Currently, finishing touches are being added to the new build. While vegetation works are still underway, artworks have emerged on the abutments of the bridges, introducing streams of colour and shapes that reflect the local landscape.

With a Brooks Access scissor lift and boom lifts on hire to complete the installations, Brooks spoke with local Artist, Glenn Hegedus, who was one of two selected to adorn the new bridges.

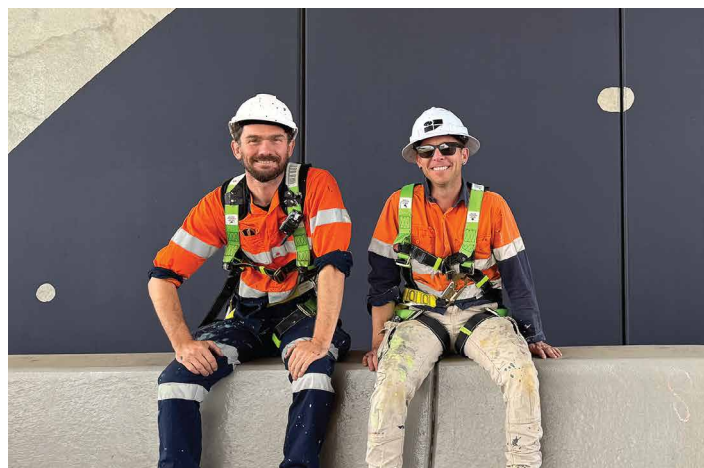
In his design, and in his desire to reflect the deep histories of the area, Hegedus shared that he sought consultation from Larry Blight, a Menang man “known for his passionate stories, knowledge and education about his people and this area.”

Like the project’s overall timeline, the abutment artworks were in the pipeline for some time, with first expressions of interest submitted in 2023. From there, Hegedus was successfully selected to design one of the three bridge sites. Challenging convention, his innovative design proposed the use of mineral pigment treatments in place of typical acrylic or latex paint.

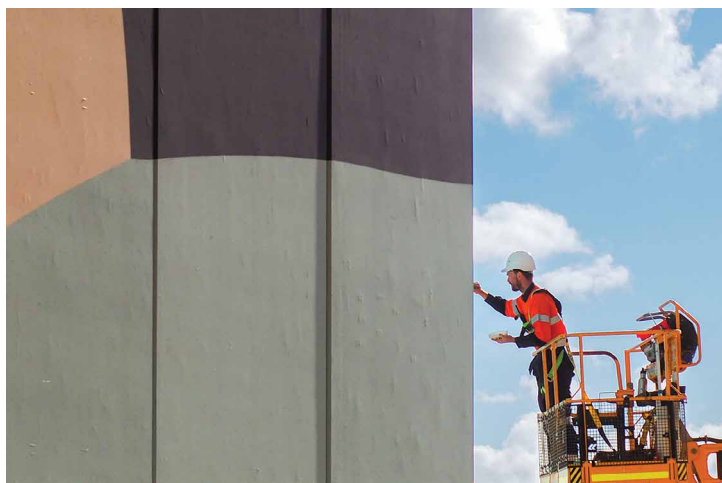
“The opportunity was too alluring not to be all in. [Mineral Pigments] won’t fade, peel or crack over significant time and permeates the concrete surface, concurrently letting it breathe; effectively becoming a carbon sponge and allowing the substrate to harden beyond its intended capacity.”

Hegedus’ designs paid homage to the landscape and its legends. “The folklores of the surrounding mounts Kardarup, Manitchpurting and Walchecup formed the sentiment I wished to leave on the walls. A nod to the stoic geologies of the area that move for nothing and no one, and where we belong amongst it all.”

Selected to install all bridge artworks, Hegedus also painted the designs of fellow artist, Nikki Green. “It was close to 12 months of work in the background, coordinating the installation of the three completed bridges,” he said. “A learning curve in scale, volume and logistics. Installation began on the 12th of January and took us through to the 12th of June.”



Artist, Glenn Hegedus (right), attributes the small Karda (goanna) hole references in his designs, to Menang man, Larry Blight.



Utilising a JLG 600AJ, XCMG XGA20K, and Haulotte HA16RTJ PRO boom lift, and a Genie GS-2669RT scissor lift, the team set to work on the mammoth task at hand. “Standing at the base of the abutments looking up was enough to make me sweat in the beginning. The numbers of the project are still surreal to me now. Over 1 tonne of mineral pigment, binder and organic protection, 400kg of epoxy, 500kg of poly urethane and 250kg of acrylic. We licked about 15,000m² for 3,500m² of graphic artwork on raw concrete – with rollers.

“We definitely added some hours to the access equipment, and it was common to have to re-adjust from ‘EWP legs’ after jumping out the basket at the end of the day.”

Due to the nature of their chosen material, they operated within tight parameters of temperature and humidity, often working through the night. “I can’t quite explain the feeling of finishing the last wall,” he said. “I’d do it all again tomorrow.”

With projects dotted throughout Albany, Hegedus has become a regular contributor to the region’s environment. His work will also be showcased as part of the Albany Bicentenary 2026. In preparation for the event, he shared that he would consult and coordinate with Menang groups and Elders, with works “co-designed to recognise our shared past and look forward to our future together.”

“It is a privilege and an honour to be tasked with creating interpretations on walls, for this moment in our story.”

Once finished, the flyover upgrade will complete Menang Drive’s seamless ring.

Archetypeprojects.com.au | @archetype_projects

Building Data Infrastructure



Project Southgate

In July of this year, the Tasmanian Government announced the development of a world-first AI Factory Zone in Northern Tasmania. Firmus Technologies - an Australian company specialising in AI infrastructure and the world leader in integrated, liquid-everywhere AI Factories - is heading a major project within the Zone.

Now under construction in Launceston, Firmus projects that the purpose-built campus of 100% liquid-cooled AI Factories, will be able to support up to 400 megawatts of electrical power consumption, all supplied by Tasmania's renewable energy.

Data Housing

A backbone of computing since the 1950s, data centres are typified as large, secure facilities that house thousands of servers, handling the storage, processing, and management of digital information. Together, they enable digital operations such as email, websites, and cloud-based services to run.

An AI Factory is a specialised data centre, designed specifically to handle the demands of AI-driven tasks.

Project Southgate will support a range of AI technologies, including gaming, digital content production, enterprise solutions, and high-performance computing.

Firmus Co-CEO Oliver Curtis, shared that "Project Southgate will form the foundation of Australia's artificial intelligence infrastructure and secure our place as the Asia-Pacific region's AI hub."

Infrastructure that will need to build quickly, as artificial intelligence rapidly continues to become more embedded in daily life.

Integrated in every aspect of their mining operation, BHP recognise the immense impact that AI has had on their business. In an August 2024 Insights Article, they highlighted that "AI has helped BHP unlock potential value through innovations such as predictive maintenance, energy optimisation, autonomous vehicle and machinery operation, data-driven decision making and real-time monitoring and reporting."

Through which, they attribute AI to helping keep their workers safe, building efficiency, increasing their speed of resource discovery, optimising ore quality, and realising new business opportunities.

Powering AI Infrastructure

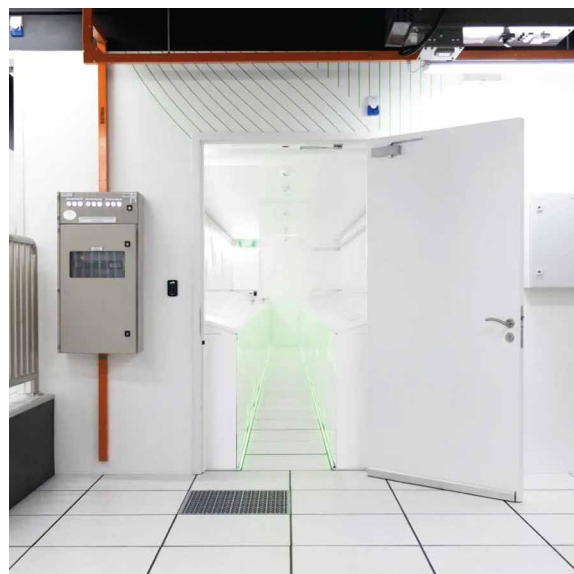
With AI integration on a steep incline and its value-add to businesses increasingly recognised, supporting its expansion has become a great consideration as data centres consume immense quantities of energy to run.

The International Energy Agency's April 2025 report, projects that "electricity demand from data centres worldwide is set to more than double by 2030 to around 945 terawatt-hours (TWh), slightly more than the entire electricity consumption of Japan today. AI will be the most significant driver of this increase, with electricity demand from AI-optimised data centres projected to more than quadruple by 2030."

While Firmus is the world leader for liquid-everywhere AI Factories, and promises future-proofed sustainability measures, concern has still been voiced for Australia's ability to support the increasing energy requirements. Where data centres require continuous power to operate and prevent overheating, there's an ongoing battle to meet their needs without overwhelming the grid.

"In the next few years, data centres will consume more than Australia's largest baseload power station - NSW's 2600-megawatt Eraring," says Patrick Gibbons, Corporate Advisor for The Australian Financial Review. "And with the need for this additional 24/7 power, Australia's challenge is that it comes at a time when the AEMO [Australian Energy Market Operator] estimates 62% of the National Electricity Market's coal fleet - Australia's main 24/7 power source - is expected to close by 2033."

On the other side of the pond, the MIT Energy Institute report that in the United States, "A single large data centre can consume as much electricity as 50,000 homes." Like Gibbons, they resolve that this excessive rate of power consumption is delaying coal plant closures in many American states. "There are simply not enough sources of renewable energy to serve both the hyperscalers and the existing users, including individual customers."



Purpose Built

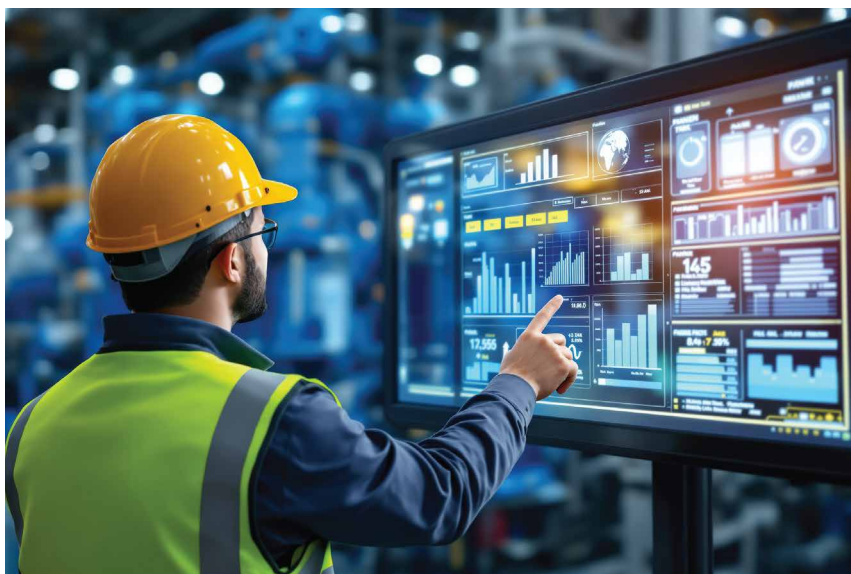
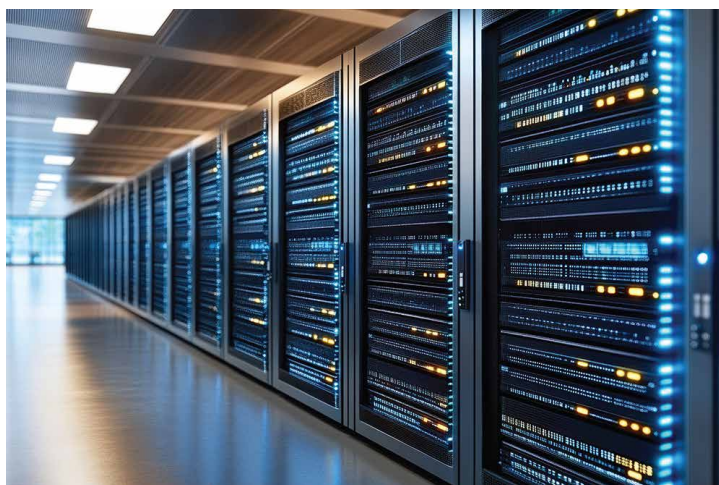
Experienced on a global scale, governments, energy providers, and tech innovators are looking to accelerate strategies in which renewable infrastructure can be built in time to support AI. If there's a hope to achieve this, Firmus Technologies is helping to close the gap.

Firmus' design consumes up to 60% less energy than traditional data centres. They achieve this through direct submersion of their servers in liquid tanks; eliminating the need for energy-intensive fans and chilled water-based air-conditioning systems. Not to mention, costing up to half as much to build.

Firmus Co-CEO, Tim Rosenfield, has confirmed that the infrastructure and connection agreements, are already in place to support the 90 megawatts of energy that stage 1 of Project Southgate will require.

Echoing this confidence, Oliver Curtis stated, "With Tasmania's clean energy and our AI Factory platform, we believe this will be the most cost-effective, sustainable AI facility in the world."

Currently under construction, the factory is set to be operational in the first half of next year.





Doing it Different

Doolee's self-performing edge

Founded in 2014, Doolee has grown into a leading contractor, delivering complex civil and construction projects across Australia and New Zealand. We sat down with the Doolee team to explore their evolution, unique delivery model, and how they're driving innovation and sustainability across a range of sectors.

How has Doolee evolved over the past decade?

When Doolee was founded by Eanna Doolin and Francis Lee, the vision was clear: deliver dependable, high-quality civil and construction services backed by a hands-on, self-performing approach. Leveraging over 75 years of combined industry experience, they focused on safe, sustainable, and efficient project delivery across diverse sectors.

Over the past decade, Doolee has grown into a multi-disciplinary contractor operating across Australia and New Zealand. With a strong focus on mining, infrastructure, energy, and renewables, and backed by a great team, the business has scaled rapidly. We've expanded the fleet, developed mobile batching capabilities, and have become a key delivery partner for large-scale infrastructure and renewable energy projects.

What is Doolee's self-performed single contractor model?

Doolee's self-performing model means most project components - from earthworks and civil construction to concrete batching, SMP installation, asset remediation, and plant operation - are executed

in-house. This gives clients greater control and reliability, with fewer handovers, and improved accountability, with a single point of contact from planning to handover.

Faster mobilisation is possible, especially for remote or large-scale sites, shutdowns, and asset remediation programs. It also ensures consistent quality, critical on renewable builds and mining SMP scopes where tolerances, safety, and timelines are tight. The team have a proven track record in live mine environments, where quick turnaround, controlled execution, and seamless integration with operations was achieved.



Operating across various sectors, how do you tailor your services to each industry?

Working across the mining, defence, energy and waste management sectors to name only a few, each presents unique challenges. From logistics in remote mining areas to strict compliance in defence or technical complexity in renewables, we pride ourselves on adapting to meet these needs.

Deploying mobile batching and flexible plant fleets reduces reliance on external supply chains. Our high-spec, mine-ready equipment and GPS-integrated plant ensure precision in civil and earthworks. Experienced crews who understand rapid mobilisation and operational constraints allow us to deliver safely and efficiently in live environments and shutdown windows.

Sustainability is a core value at Doolee. How are you successfully integrating these into projects?

Sustainability isn't just a value; it's embedded in our delivery strategy. Key initiatives include:

- Battery Storage & Renewable Site Support: Civil and concrete works for solar farm BESS installations in WA, including trenching, foundations, and access infrastructure
- Wood-Waste to Energy (Hazelmere, WA): Civil package for Australia's first large-scale pyrolysis facility, converting timber waste to bioenergy and biochar.
- Biogas Infrastructure: Civil works supporting methane capture for on-farm energy self-sufficiency.
- Sustainable Site Management: Water recycling, sediment control, on-site batching, and solar-powered facilities that reduce truck movements, emissions, and diesel reliance at remote sites.

Can you tell us about a recent project that was particularly interesting or challenging?

A recent standout was the delivery of major enabling works in the Goldfields for a leading gold miner. This was a complex, multidisciplinary package that involved operating in a remote area with tight commissioning deadlines.

Works included water infrastructure (drainage, bunding, sediment control, dam construction, HDPE lining), HDPE piping and poly welding for water networks, full SMP installation, E&I works for pump stations and power supply, concrete works (foundations, slabs, tanks, sumps, tunnels, retaining walls), and civil works (access roads, laydowns, equipment pads).

What made the project particularly unique, was that all scopes were self-performed, allowing full control over timeline, quality, and safety. It showcased our ability to deliver integrated solutions under pressure and highlighted the value of our in-house model, in streamlining delivery and reducing coordination risks.



How is Doolee leveraging technology to enhance project outcomes and client satisfaction?

We're investing in smart technologies to improve speed, safety, and certainty. Remote and mobile batching plants ensure high-quality concrete delivery to regional sites. GPS machine control on graders, dozers, and excavators improves accuracy and reduces rework. Real-time tracking and fleet management systems boost productivity and responsiveness. Our R&D also includes PFAS and contaminated soil treatment to support sustainable remediation.

What are Doolee's strategic goals for the next five years?

We're focused on expanding our role in renewable infrastructure - particularly utility-scale solar, wind, and BESS projects. Expanding our plant and batching capabilities will support rising demand in remote areas.

We're also growing our presence in defence and remediation, building tier-one partnerships to deliver turnkey packages from earthworks to concrete and civil. Key priorities include tech investment, sustainability-led solutions, and expanding our national footprint, especially in South Australia and regional Queensland where major transmission and energy corridor projects are ramping up.



This November, the Doolee team are participating in Breaths and Beats - a cycling initiative for life-saving medical research. Scan the QR code to get involved in the ride or donate to the Heart and Lung Research Institute of WA.



www.doolee.com.au | +61 459 240 177 | bookings@doolee.com.au

Having a Field Day

Seeding connections, growing industry



The Dowerin Machinery Field Days (DMFD) is Western Australia's premier agricultural exhibition. Held annually in the town of Dowerin, approximately 156km north-east of Perth, it takes place on the last Wednesday and Thursday in August, transforming the Wheat-belt region into a bustling hub of industry and community activity.

This year, for the first time, Brooks Equipment Sales attended the event with a 400sqm site dedicated to XCMG construction equipment sales. Visitors at Dowerin Machinery Field Days were able to get a close-up look at the quality of XCMG machines on display.

Showing a diverse range of small excavators, the XE17U 1.8t excavator, XE55U 5.7t excavator, and XE90U 9.5t excavator were on display. The XC948 tool carrier with a 2.1m³ bucket was there, along with its big brother, the XC978 wheel loader with a massive 4.5m³ bucket. Representing the skid steer division was the XC7-SR08 wheeled skid steer. For forklift lovers, the FD35T 3.5t forklift was available for viewing. For those seeking a lift, the XGA16K articulated boom was there, but of course, the GR2405 motor grader was the most popular machine amongst visitors.

Brooks Equipment Sales General Manager, Nathan Fenemer, attended the two-day event, along with WA Sales Representative, Rhett Rosenius. The feedback from customers was really positive.

"Some of the visitors had heard of XCMG before, but being regional, hadn't had the opportunity to see the equipment in person," explained Nathan. "For others it was a completely new brand, and they were really excited to have a new choice when it comes to their equipment."

As extra support, Brad Allard from the Brooks Hire division also attended DMFD. He was on hand to offer customers the opportunity to hire the equipment before committing to buying. Samantha Robertson, our Senior Scheduler from the Field Service Department, was also on hand to offer customers mechanical support.

This year's event attracted over 4,500 visitors over two days, bringing together decision makers across the full agricultural supply chain, from agribusiness, to machinery, equipment, livestock, and technologies. We look forward to attending again in 2026.

The Big Dig

Digging deep for charity



For the third year running, The Big Dig is unearthing mounds of support for youth mental health. From midday on Saturday, October 25th, over 50 participants will come together as individuals or in teams to each dig a 1-metre-deep trench by hand over a 24-hour period.

Creator, Goren Utjesinovic's career and background in construction spurred this creative idea to raise vital funds for youth mental health and develop resilience for the next generation of young heroes.

Joining forces, in addition to having a team of diggers, Brooks Equipment will also have a range of XCMG construction and mining equipment on display and available for the public to operate, from 12pm to 5pm on Saturday. Included, will be loaders, excavators, dump trucks, graders, and more.



With all donations from the event going to zero2hero's youth mental health programs in Western Australia, come down to WA Limestone to check out the action, or get involved yourself in an XCMG machine.

Scan the QR codes to donate to The Big Dig or register your interest in operating a piece of heavy machinery.



Make a Donation



Operate a Machine

Riding the Pipeline

Big Yellow Pipeline Challenge

Commemorating its 10th year, the Big Yellow Pipeline Challenge is an annual five-day mountain biking event and fundraiser that raises money for Youth Futures WA, a charity supporting at-risk young parents and children escaping homelessness.

From the 13th to the 17th September 2025, riders undertook an epic 600km adventure; from the red dirt of the Goldfields following the Goldfields Water Pipeline, to the green of the Perth Hills. Participants faced a mix of terrain, including sandy sections, rutted trails, rocky outcrops, and hills. Teams of up to five riders shared the distance in a relay-style ride assisted by support vehicles along the way.

Big Yellow Mining was successful in gaining the naming rights for the 2025 event. Stuart Brooks attended their Challenge Launch where Brooks Group Australia committed to a Silver Sponsorship. The sponsorship is a pledge to donate \$15,000 per year for the next five years.



New Machines

THE BROOKS FLEET OF ASSETS



FOR HIRE

Isuzu Service Truck - Location: WA

FOR HIRE

Komatsu WA500 Loader
Location: WA



FOR HIRE

Broons Tractor Grid Roller
Location: WA



FOR HIRE

Komatsu HM400 Dump Truck
Location: WA



FOR HIRE

Isuzu 14kL Water Truck - Location: WA

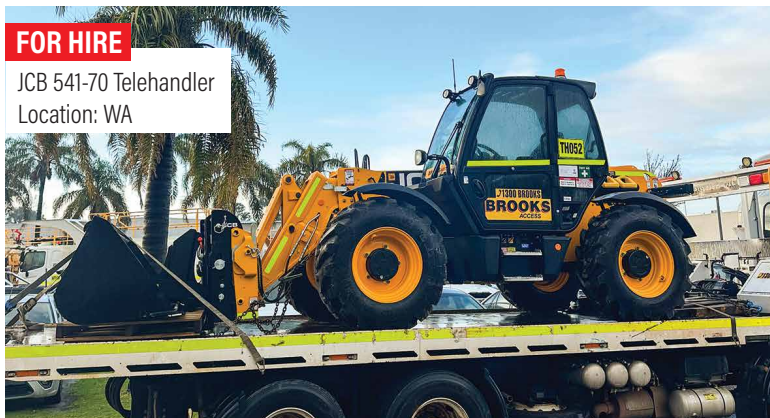
FOR HIRE

XCMG XE1350 Excavator
Location: WA



FOR HIRE

JCB 541-70 Telehandler
Location: WA



FOR HIRE

Isuzu 20kL Water Truck
Location: WA



FOR SALE 6 x XCMG XDA45 Dump Trucks
Location: WA

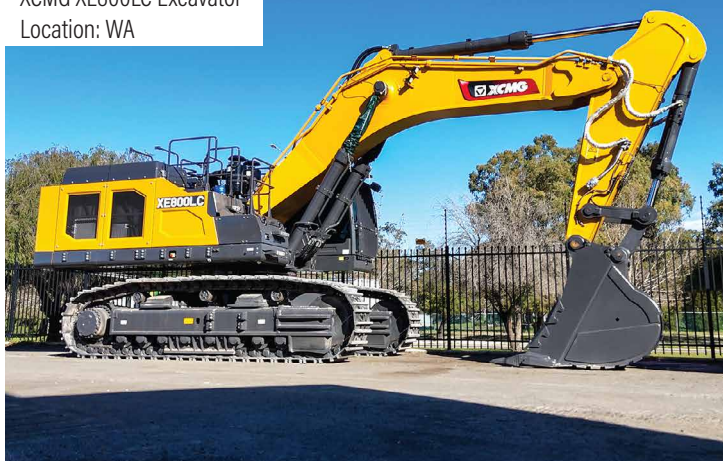


FOR SALE XCMG XDA45 Dump Truck
Location: QLD



FOR HIRE OR SALE!

XCMG XE800LC Excavator
Location: WA



FOR SALE XCMG XE235UCR Excavator & XE155UCR Excavator
Location: QLD



FOR SALE XCMG XS265SPD Roller
Location: WA



FOR SALE XCMG XDA45 Dump Truck
Location: SA



FOR SALE XCMG XC988 Loader - WA



FOR SALE XCMG XS165 Roller - WA



WA Miners Mingle



The WA Mining Club's 'Miners Mingle', held on the 3rd of July, absolutely delivered. The theme of the event, 'Maximise Your Potential', was supported by speakers Claire Parkinson, Debbie Morrow, and George Bauk. The key messages delivered were; build relationships, show up, and do your best. Brooks Equipment Sales Representatives, Kai Li and Joe Goulding attended the event.

CCF WA Women in Civil Awards



This year, CCF WA switched things up with the introduction of four new Women in Civil Awards which were presented at their Women in Civil Lunch. Held on the 17th of July, the awards on offer were Industry Leader Award, Emerging Leader Award, Trainee/Apprentice Award, and Corporate Leader Award. Brooks Hire Team Manager (West), Katelyn Gibson, was nominated for the Emerging Leader Award. Jacinta O'Brien attended the event on behalf of Katelyn.

CCF WA President's Breakfast

Nathan Fenemer from Brooks Equipment, Katelyn Gibson from Brooks Hire, and Jacinta O'Brien from Brooks Access joined CCF WA President, Leon Fogliani for the annual CCF WA President's Breakfast. Keynote speaker, Adrian Hart from Oxford Economics gave a data-driven presentation packed with useful insights on market trends and the outlook ahead.



WA Mining Club July Lunch



Alcoa Alumina operations and economic contribution to WA and the nation was the topic of conversation at the WA Mining Club's July Luncheon. Held on the 24th of July, at Optus Stadium, Elsabe Muller, President and VP Operations for Alcoa Australia, was the keynote speaker for the event. Kai Li attended the luncheon on behalf of Brooks Equipment Sales.

Local Government Inter-Municipal Golf Day



The Shire of Kellerberrin played host to this year's LGIS Golf Day. The location of the annual event is switched between WA Shires every year. As Silver Sponsors of the golf day, Brooks Hire was represented by Hire Coordinator, Sam Ballantyne. The three-day event spanned from the 13th to 15th August, and was an excellent opportunity to network with members of local government throughout WA.



DIAWA Monthly Meeting



The Demolition Industry Association of WA (DIAWA), held their monthly meeting at Brick Match on Friday 22nd August. Brooks Equipment was invited to showcase the XCMG XE235UCR 26 tonne excavator at the event. It was a fabulous turnout. Thanks to Frank Di Angelo and Dawn McKinnon for the invitation to attend.

Copper to the World

Michael Konecny from Brooks Equipment Sales attended Austmine's Copper to the World in Adelaide. The major discussion focused on the de-carbonisation of the copper mining industry to meet net zero emissions and the replacement of diesel fuel assets to electric and hybrid equipment.



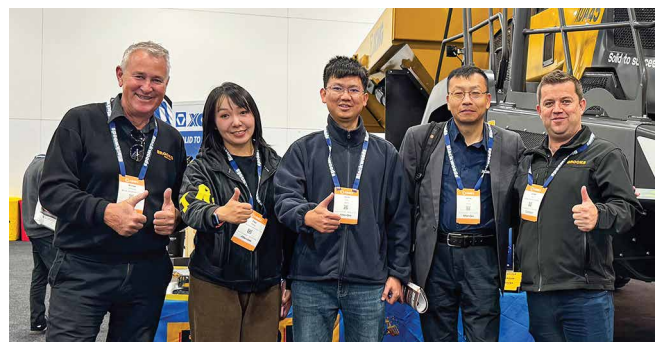
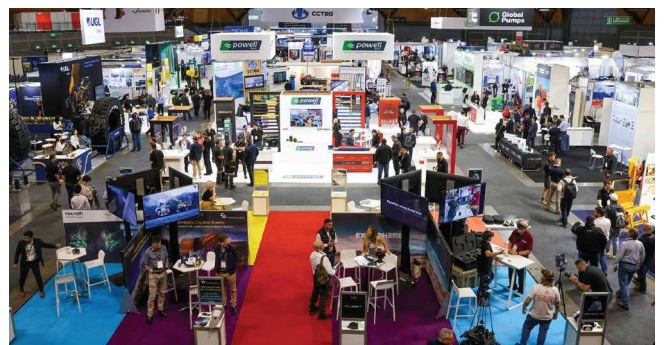
CCF WA Earth Awards

Congratulations to all of the winners at the Civil Contractors Federation of WA (CCF WA) Earth Awards. Held annually, the Earth Awards are a celebration of infrastructure excellence. This year, there was a record 25 entries across all categories. As sponsors, Brooks Hire Service hosted a table of ten, and presented the award for Excellence in Civil Construction - Greater than \$150M, which was won by Armadale Line Upgrade Alliance for their METRONET Victoria Park-Canning Level Crossing Removal. Thank you to CCF WA for hosting a magnificent evening.

Asia-Pacific International Mining Expo (AIMEX)

Wow! AIMEX certainly delivered in 2025. Australia's longest running mining show, AIMEX has been locked in to call South Australia home for the next 10 years. This year, the event was held at Adelaide Showground and included a free-to-attend 3-day conference, feature pavilions, and a Transformative Technology Research and Development Hub.

Brooks Equipment Sales was amongst the action, showcasing an XCMG XDA45 Articulated Dump Truck. The massive machine attracted hordes of crowds who were eager to get a close-up look. Brooks South East Operations Manager, Rob Cirocco, was in attendance, along with Brooks Equipment Sales Representatives, Michael Konecny and James Kain.



National PJ Day

National Pyjama Day, held on Friday, 25th July, 2025, is all about raising awareness and funds for children in foster care. The Brooks team turned up in their winter PJ's for the day, raising \$423 for the charity.



Containers for Literacy



Brooks has partnered with Good Sammy Enterprises, taking part in their Containers for Change programme. Dedicated bins have been placed at the Welshpool branch, with all funds raised going to Good Sammy's and the Indigenous Literacy Foundation (ILF). The first collection was on the 10th July, coinciding with NAIDOC Week.

Happy Retirement Dr Lee!



Congratulations to Dr Colin Lee on his recent retirement from Medical Air. Thank you for your many years of dedicated service to medicine, especially as a Flight Medical Doctor with us. Wishing you a very happy and healthy retirement. You are already missed!

Winners are Grinners!

Every month, Brooks Hire gives away a 'Super' prize as a part of their Super Deal promotion. All new hires starting that month go in the draw to win. Congratulations to our most recent winners:

May - Josh Cuthbert from North Oz Plumbing won a Kasumi Damascus Chef and Utility Knife Set valued at \$469

June - Conrad Brownlie from NRW won a Camp Oven and Crockery Set valued at \$327.

July - Michael Tschanz from Roadline Civil won a Wildtrak King Double Trakker Swag valued at \$400.





Salute to Sydney

Say hello to our team at St Marys, NSW. Renowned for Cisco's delicious Patagonian BBQs, the Sydney team function like a tight-knit family, even recalling each other's coffee orders. Special shout out to the Sydney crew who have been actively working on establishing the new branch in Orange, NSW. From left to right - Jithin, Georgia, Cisco, Joel, Louis, and Chito.

Top End Team in Darwin

Our Darwin branch is the only location servicing the whole of the Northern Territory! Over the last 2 years, we have sponsored the Noonamah Tavern Rodeo in Darwin, one of the region's most popular events. Our team works closely with the civil and mining industries in the Top End. Thanks to Rodnie, Julia, Jesse, Laurante, Sean, and Jerolyn for their hard work and dedication.



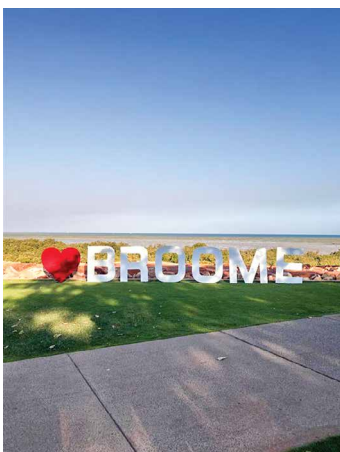
Say G'day to Dalby



Here's a fun fact - opened in 2013, Dalby was the first Brooks Hire branch outside of WA. The branch actively sponsors local Campdraft events, such as the Dalby & District Campdraft and the Congress Campdraft. The team is super friendly and easy to work with. Special shoutout to BJ, Danielle, Thomas, Jacob, Dylan, and Tyler for their hard work.

Balmy Broome

Doug, Roma, Stuart, and Keith Brooks, visited the Broome branch over August, along with Brooks Access Account Manager, Jacinta O'Brien, and Brooks Hire Manager (West), Katelyn Gibson. Brooks play a strong role in the Broome community, supporting the local rodeo, and Broome's annual Shinju Matsuri Festival. Shout-out to our Leading Hand, Rory Fletcher and the rest of the Broome team!



Welcome Aboard

Christie Rennie

What was your first job?
Checkout operator at Woolworths.

What is your role at Brooks?
Administration Assistant, Kalgoorlie WA.

What did you want to be when you were growing up? A Hairdresser.



What achievement in life are you most proud of? My kids.

How would you describe yourself in 3 words?
Independent, talkative, funny (if you like dad jokes).

Where would we find you on the weekends?
Most likely out somewhere with the family.

What is something that you're really good at? Organising things.

What is something that you're really bad at? Reversing into a tight space.

If you could invite anybody to dinner (dead or alive), who would it be? My Mum.

Favourite cake: Cheesecake.

Favourite song: According to Spotify, I have about 300 favourites!

Favourite holiday destination: Anywhere warm with a beach.

Shaun Mann

What was your first job?
Deckhand on a prawn trawler.

What is your role at Brooks?
Workshop Foreman, Gladstone, QLD.

What did you want to be when you were growing up? Fisherman.



What achievement in life are you most proud of?
Being a dad to my two boys.

How would you describe yourself in 3 words? Aussie, Aussie, Aussie!

Where would we find you on the weekends?
At a go kart track somewhere on the eastern side of the country.

What is something that you're really good at? Sports allrounder.

What is something that you're really bad at? Getting a sun tan.

If you could invite anybody to dinner (dead or alive), who would it be? Daniel Ricciardo.

Favourite cake: Chocolate Mud Cake.

Favourite song: "When I Come Around" by Green Day.

Favourite holiday destination: Somewhere I haven't been.

Robert Fedigan

What was your first job? Storeman.

What is your role at Brooks?
HSEQ Advisor, Welshpool WA.

What did you want to be when you grew up? Machine Operator.



What achievement in life are you most proud of? My kids.

How would you describe yourself in 3 words? Bad. Dad. Jokes.

Where would we find you on the weekends?
On a 4WD track somewhere.

What is something that you're really good at? Problem solving.

What is something that you're really bad at?
Remembering names, I apologise to everyone now.

If you could invite anybody to dinner (dead or alive), who would it be? My Grandfather.

Favourite Cake: Cheesecake.

Favourite Song: "The Nosebleed Section" by Hilltop Hoods.

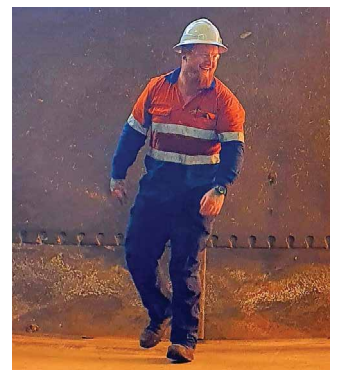
Favourite holiday destination: Southwest of WA.

Dylan Mogg

What was your first job?
Woolies Stock Filler.

What is your role at Brooks?
HD Mechanic, Geraldton WA.

What did you want to be when you grew up? Engineer.



What achievement in life are you most proud of? My 2 boys.

How would you describe yourself in 3 words?
Kind, respectful, diligent.

Where would we find you on the weekends?
With my family out and about.

What is something that you're really good at? Good with my hands.

What is something that you're really bad at? Self evaluations.

If you could invite anybody to dinner (dead or alive), who would it be? My wife.

Favourite Cake: Black Forest.

Favourite Song: Untitled - Knuckle Puck.

Favourite holiday destination: Anywhere down south.

William Topham



What was your first job? McDonalds.

What is your role at Brooks?

Trade Assistant, Oxley QLD.

What did you want to be when you grew up? A Boxer.

What achievement in life are you most proud of? Graduating Year 12.

How would you describe yourself in 3 words? Humorous, hard-working, proud.

Where would we find you on the week-ends? At the pub.

What is something that you're really good at? Driving.

What is something that you're really bad at? Giving up.

If you could invite anybody to dinner (dead or alive), who would it be? Ian Hedley.

Favourite Cake: Kit Kat Cake.

Favourite Song: "Redemption" feat Nemzzz.

Favourite holiday destination: Orange, NSW.

Shannen Vincent



What was your first job? Rouseabout.

What is your role at Brooks?

Workshop Foreman, Orange NSW.

What did you want to be when you grew up? An Astronaut.

What achievement in life are you most proud of? Owning a home.

How would you describe yourself in 3 words? Concise, blunt, proud.

Where would we find you on the week-ends? Kids sports.

What is something that you're really good at? Fixing things.

What is something that you're really bad at? Ice skating.

If you could invite anybody to dinner (dead or alive), who would it be? My Pa.

Favourite Cake: Woolies Chocolate Mudcake.

Favourite Song: "Green Mountain" by Claude King.

Favourite holiday destination: Lapland.

Joshua Van Der Wel



What was your first job?

HVAC Store Trainee.

What is your role at Brooks?

Parts Driver, Brooks Parts, Cannington WA.

What did you want to be when you grew up? Detective.

What achievement in life are you most proud of? Becoming a Qualified Mechanic.

How would you describe yourself in 3 words? Friendly, quiet, positive.

Where would we find you on the week-ends? Camping.

What is something that you're really good at? Fixing my cars.

What is something that you're really bad at? Cooking.

If you could invite anybody to dinner (dead or alive), who would it be? Wright Brothers.

Favourite Cake: Caramel cake.

Favourite Song: Always changing- Too many.

Favourite holiday destination: Pemberton.



Amanda's Kitchen

Chutney Beef Parcels

INGREDIENTS

- 4 x Rib eye steaks
- 2 x Puff Pastry sheets (ready made)
- 1 x Jar of Chutney
- Salt & Pepper
- Egg or milk for basting

METHOD

1. Pre-heat oven to 180°C
2. Season the steaks with salt and pepper and seal on both sides in a hot frypan.
3. Cut a sheet of puff pastry in half, diagonally.
4. Spread your favourite chutney onto both sides of the steak.
5. Place the steak onto the pastry and fold over the meat to create a parcel. Brush with milk or egg.
6. Bake in the pre-heated oven for 30 minutes. Serve & enjoy!

Wrap your laughing gear around one of these juicy parcels of golden goodness. An easy, but tasty mid-week meal from Amanda Yulie, our QLD Receptionist - Administration angel.



The Puzzler Page



Spot the Difference

There are 10 differences between the photos below. See if you can find them all.



Word Solver

Find the 9 letter word using the letters in the grid, then try to make as many other words as you can. Words must be a minimum of 4 letters and must contain the middle letter. No proper nouns or plurals.

Good - 15 Words

Very Good - 20 Words

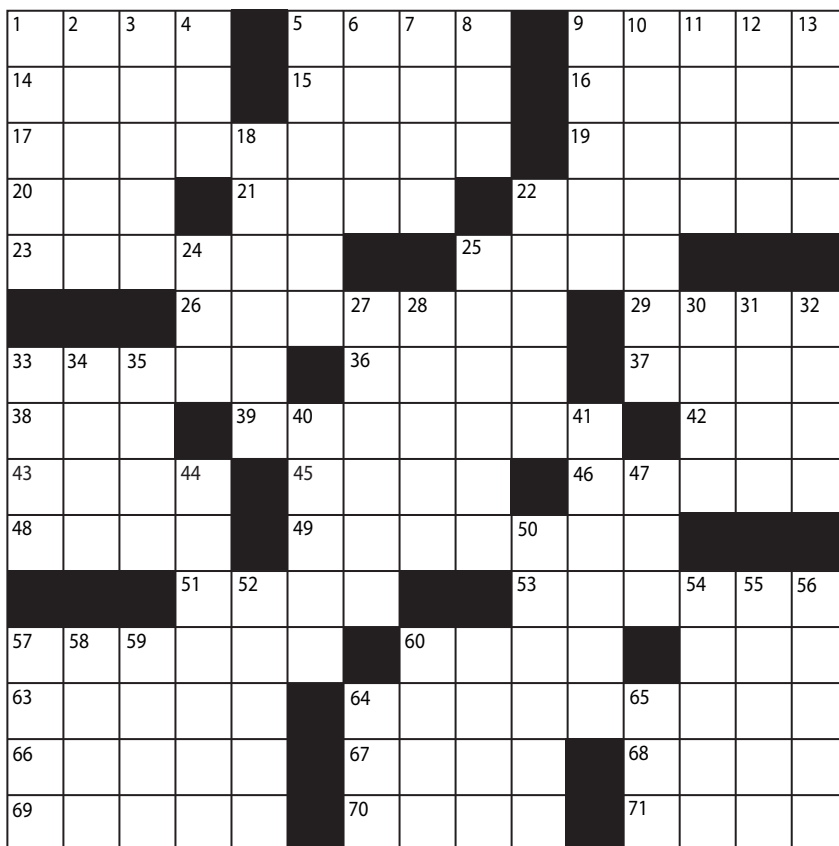
Excellent - 25 or more

S	G	R
I	E	Y
N	V	U

Crossword

Across

1. Impersonated
5. Face shape
9. Sagas
14. Lacking hair
15. Asian staple
16. Singer _____ Osmond
17. Vague
19. Box
20. Make a knot
21. Marsh grass
22. Halted
23. _____ door
25. Mine products
26. With a leg on each side
29. Norway's capital
33. Oak nut
36. Finales
37. Hawaiian feast
38. Short sleep
39. Brunch dishes
42. Motel units (abbr.)
43. Pitfall
45. Pub potables
46. Defraud
48. Singer _____ Fitzgerald
49. Prickly plants
51. Trampled
53. Unbroken
57. Reporter's boss
60. Copenhagen native
62. Overly
63. Cowboys' contest
64. Farm animals
66. Turn aside
67. Bard of _____
68. Lotion ingredient
69. Penn and Connery
70. Dogs' feet
71. Design



Down

1. Borders on
2. Sudden fright
3. Church official
4. HST's successor
5. Far East
6. Climbing plant
7. Served perfectly
8. Commanded
9. Host
10. Umbrella
11. Levin and Gershwin
12. Refer to
13. Grain
18. California city
22. Wave top
24. Corn unit
25. Most unusual
27. Teetered
28. Small bay
30. Certain
31. Tibetan priest
32. Drive out
33. Poker payment
34. Poet _____ Sandburg
35. Milky gem
40. Stately home
41. Panoramas
44. Sewing guide
47. FDR's successor
50. Bedding
52. Sources
54. Coral island
55. Hot chocolate
56. Keepsake
57. Important times
58. Peace symbol
59. Bright thought
60. Aria singer
61. Declare openly
64. Lick up
65. Strike lightly

Sudoku

Enter numbers into the blank spaces so that each row, column and 3x3 box contains the numbers 1 to 9 without repeats.

	5			9			8	
3	7						2	
1					6		9	
	4	5	2	6		8		7
	6		8			9		5
	1		3			2		6
5	3				8	1	6	
		1	4				7	
	9				3			



Brain Teasers

I have a neck but never a head, Two arms that never hold bread. I lift steel giants into the sky, Then fold to sleep as trucks roll by. What am I?



I am something people love or hate. I change people's appearances and thoughts. If a person takes care of themselves I will go up even higher. To some people, I will fool them. To others, I am a mystery. Some people might want to try and hide me but I will show. No matter how hard people try I will never go down. What am I?

I'm drawn before I'm born, I'm studied but never worn. Without me, no work begins, Yet when I'm real, my paper thins. What am I?

WINNER

Ashley McDonald

Snap That

STAFF PHOTOGRAPHY COMPETITION

Rob Cirocco



Hayden Rance



Nathan Fenemer



Dylan Prince



Ryan Delager



Kaj Li



Daniel Whitehead



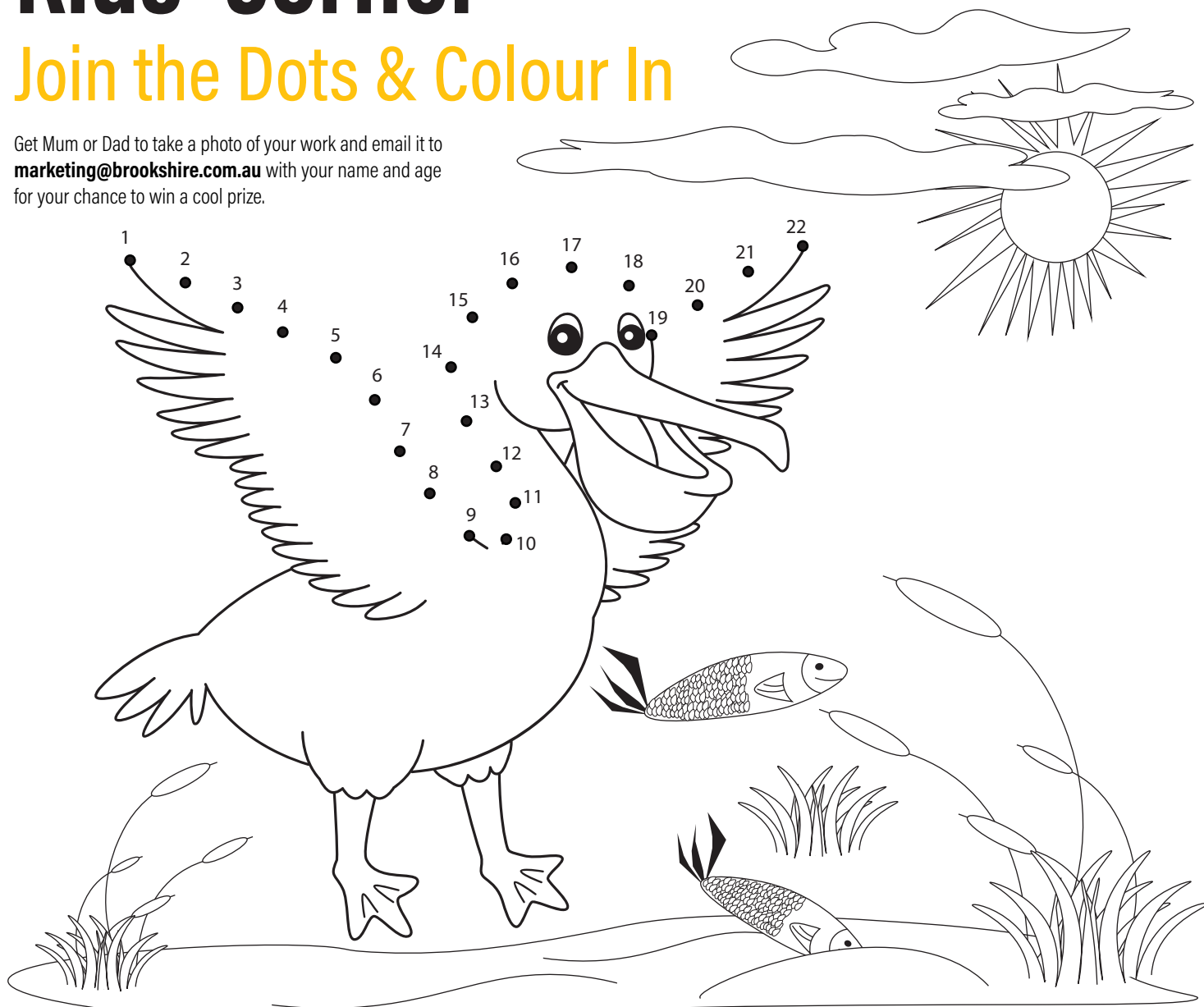
Jacob Doglione



Kids' Corner

Join the Dots & Colour In

Get Mum or Dad to take a photo of your work and email it to marketing@brookshire.com.au with your name and age for your chance to win a cool prize.



Congratulations to all of the winners from our last edition. You will all be receiving a prize in the post.



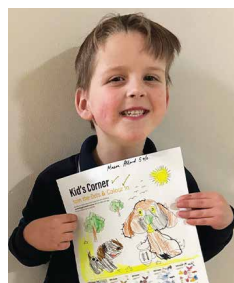
Jedd Piotrowski - Age 5



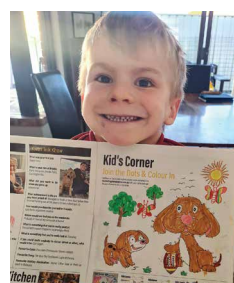
Avalyn Broadhead - Age 6



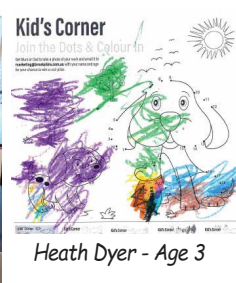
Maddie Allard - Age 4



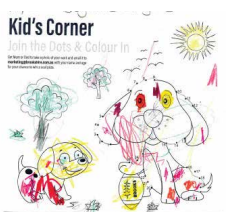
Mason Allard - Age 6



Billy Mizza - Age 5



Heath Dyer - Age 3



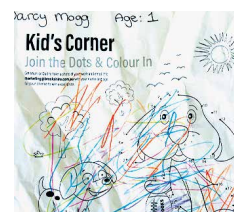
Kyson Doglione - Age 3



Zarli Doglione - Age 1



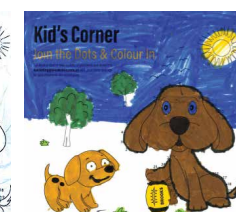
Allyxia Idang - Age 6



Darcy Mogg - Age 1



Finn Mogg - Age 3



Hunter Gibson - Age 7

The Tech Report

DEWATERING PUMPS

Dewatering pumps are used to remove unwanted water from construction sites, mines, tunnels, quarries, flooded areas, and other environments where excess water could cause damage or disrupt operations. They vary in design, power source, and pumping method, but they all aim to move water from one location to another, efficiently. Here's a quick rundown on the different types of dewatering pumps available.

Centrifugal Pumps

The most common use for a centrifugal pump is for large scale mine pits, flood control, and slurry movement. They can handle large volumes quickly, however they are less effective for high lifts. Centrifugal pumps use an impeller that spins inside the casing to create centrifugal force. This force pushes water outwards from the centre to the pump outlet, creating a low pressure zone that draws in more water. Centrifugal pumps require priming to start pumping.

Vacuum-Assisted Pumps

A vacuum-assisted pump is a type of centrifugal pump that uses an additional vacuum system to automatically remove air from the suction line. They are popular for dewatering purposes in mining and construction as they can start pumping water even when the suction pipe isn't completely flooded - something a standard centrifugal pump struggles with.



Submersible Pumps

Submersible pumps are excellent for continuous operation and are generally used in deep excavation pits, sumps, and sewerage systems. They are completely submerged in the water that is being pumped. The electric motor is sealed inside the casing, and a driving impeller forces water upwards through the discharge pipe. No priming is required for this sort of pump, as the pump is already underwater.

High Head Pumps

High head pumps are designed to move liquids to significant vertical heights or over long distances. They generate a much higher discharge pressure than a standard pump, however their flow volume can be significantly less. High head pumps use multi-stage impellers, running at higher rotational speeds, each adding more pressure to the water.

PUMP TYPE	BEST FOR	NOT IDEAL FOR	KEY ADVANTAGES
Centrifugal Pump	Large volumes of water with low to moderate head (construction sites, mines)	Very high head requirements or viscous/slurry fluids	High flow rate, simple operation, cost-effective
Submersible Pump	Deep excavations, confined spaces	Very shallow water where priming is faster with other pumps	Can operate underwater, quiet, space-saving
High Head Pump	Long-distance pumping, high vertical lift (tunnels, mines, quarries)	Low head, short-distance pumping	Maintains pressure over long distances
Vacuum-Assisted Pump	Large-scale bypass pumping, sewer bypass, continuous dewatering	Small or one-off dewatering jobs	Continuous priming, can handle air/water mix

Brooks Site Services stocks a wide range of dewatering pumps to suit most situations. To see the full range, scan the QR Code, call 1300 276 657, or email: sales@brookssiteservices.com.au



BROOKS HIRE

Plant List & SPECIFICATIONS MANUAL



- Air Compressors
- Articulated Boom Lifts
- Articulated Dump Trucks
- Attachments
- Backhoes
- Battery Packs
- Double Drum Vibe Rollers
- Dozers
- Dumpers
- Dust Suppression Fans
- Excavators
- Forklifts
- Fuel Trucks & Trailers
- Generators
- Graders
- Lighting Towers
- Loaders
- Multi Tyre Pneumatic Rollers
- Padfoot Vibe Rollers
- Plate Compactors
- Portable Buildings
- Portable Steel Barriers
- Pumps
- Pump Accessories
- Rigid Dump Trucks
- Scissor Lifts
- Service Trucks
- Skid Steer Loaders
- Smooth Drum Vibe Rollers
- Solar CCTV Towers
- Solar Panels
- Tampers
- Telehandlers
- Telescopic Boom Lifts
- Tipper Trucks
- Tool Carriers
- Tractors
- Traffic Lights & Signage
- Trailer Mounted Booms
- Vehicles
- Water Storage
- Water Trucks



Air Compressors

BRAND	TYPE	FLOW	PRESSURE	WEIGHT	DIMENSIONS (L x W x H)
Chicago Pneumatic	Skid	75 cfm	7 bar	500 kg	1580 x 740 x 850 mm
Chicago Pneumatic	Skid	110 cfm	7 bar	500 kg	1580 x 740 x 850 mm
Rotair	Trailer	127 cfm	7 bar	700 kg	1749 x 1340 x 1302 mm
Chicago Pneumatic	Skid	130 cfm	7 bar	750 kg	1870 x 950 x 1040 mm
Chicago Pneumatic	Skid	175 cfm	7 bar	750 kg	1870 x 950 x 1040 mm
CompAir	Trailer	176 cfm	7 bar	800 kg	3797 x 1490 x 1327 mm
Rotair	Skid	185 cfm	7 bar	850 kg	3191 x 1030 x 1361 mm
Chicago Pneumatic	Skid	190 cfm	7 bar	750 kg	1870 x 950 x 1040 mm
Rotair	Trailer	251 cfm	7 bar	1400 kg	3491 x 1620 x 1701 mm
CompAir	Trailer	268 cfm	7 bar	1200 kg	3974 x 1700 x 1440 mm
CompAir	Trailer	388 cfm	8.6 bar	1980 kg	4555 x 1820 x 1790 mm
Rotair	Trailer	400 cfm	10 bar	1920 kg	4534 x 1980 x 2137 mm
Rotair	Trailer	423 cfm	7 bar	2000 kg	4535 x 1980 x 2127 mm
Rotair	Trailer	530 cfm	10 bar	2600 kg	4242 x 1960 x 2569 mm
Atlas Copco	Trailer	860 cfm	14 bar	5300 kg	4900 x 2150 x 2500 mm
Rotair	Trailer	893 cfm	8 bar	3700 kg	6142 x 1960 x 2320 mm
Atlas Copco	Trailer	938 cfm	12 bar	5300 kg	4900 x 2150 x 2500 mm
Atlas Copco	Trailer	1020 cfm	10.3 bar	5300 kg	4900 x 2150 x 2500 mm
Atlas Copco	Trailer	1102 cfm	8.6 bar	5300 kg	4900 x 2150 x 2500 mm
Atlas Copco	Skid	2150 cfm	69 bar	3515 kg	2800 x 1850 x 2500 mm



Articulated Boom Lifts

BRAND	MODEL	TYPE	WORKING HEIGHT	REACH	UP & OVER	PLATFORM CAPACITY
JLG	340AJ	Diesel	10.33 m	6.06 m	5.17 m	230 kg
XCMG	XGA12K	Diesel	12.5 m	7.1 m		230 kg
Genie	Z34/22IC	Diesel	12.52 m	6.78 m	4.65 m	227 kg
Snorkel	A38E	Electric	13.5 m	6.1 m	5.4m	215 kg
JLG	450AJ	Diesel	15.72 m	7.62 m	7.3 m	250 kg
Genie	Z45XC	Diesel	15.87 m	7.55 m	7.44 m	300 kg
Genie	Z45FE	Hybrid	15.92 m	6.94 m	7.5 m	300 kg
Haulotte	HA16RTJ	Diesel	16 m	8.3 m	7.65 m	230 kg
Snorkel	A46JRT	Diesel	16.3 m	7.35 m	7.67 m	227 kg
XCMG	XGA16K	Hybrid	16.6 m	8.82 m		256 kg
JLG	600AJ-HC3	Diesel	18.29 m	12.37 m	8.1 m	299 kg
JLG	600AJ	Diesel	18.46 m	12.10 m	8.9 m	230 kg
Genie	Z-60/37FE	Hybrid	20.16 m	11.15 m	7.39 m	227 kg
Genie	Z62/40	Diesel	20.87 m	12.42 m	7.8 m	227 kg
XCMG	XGA20K	Hybrid	20.63 m	12.08 m		350 kg
Genie	Z80/60	Diesel	25.77 m	18.29 m	8.83 m	227 kg
JLG	H800AJ	Hybrid	26.38 m	15.8 m		230 kg
Haulotte	HA26RTJ	Diesel	26.4 m	17.5 m	9.3 m	250 kg
XCMG	XGA26K	Diesel	26.6 m	19.5 m		256 kg
JLG	1250AJP	Diesel	38.3 m	19.25 m		230 kg
Haulotte	HA41RTJ	Diesel	41.5 m	20.1 m	23.01 m	230 kg
Genie	ZX135/70	Diesel	43.15 m	21.26 m	23.01 m	272 kg



Articulated Dump Trucks

BRAND	MODEL	PAYLOAD	WEIGHT	SPEED	DIMENSIONS (L x W x H)
Komatsu	HM300	273 tonnes	22.5 tonnes	60 km/hr	10.5 x 3.5 x 2.9 m
XCMG	XDA30	30 tonnes	27 tonnes	56 km/hr	10.3 x 3.2 x 3.78 m
Komatsu	HM400	40 tonnes	34 tonnes	56 km/hr	11.1 x 3.45 x 3.735 m
Caterpillar	745	41 tonnes	32.87 tonnes	55 km/hr	11.42 x 3.42 x 4.04 m
XCMG	XDA45	41 tonnes	34 tonnes	47 km/hr	11 x 3.95 x 3.8 m



Attachments

EXCAVATOR ATTACHMENTS	TOOL HANDLER ATTACHMENTS
360° Grapple	Forks
Auger	GP Bucket
Batter Bucket	GPS
Compaction Wheel	Grain Bucket
Crusher Bucket	Jib
GP Bucket	Log Forks
GP Grapple	Man Cage
GPS	Rake Bucket
Hydraulic Grab	Stemming Bucket
Hydraulic Grapple	Tyre Grab
Mechanical Grab	
Misu Heavy Duty Screen	
Plate Compactor	
Ripper	
Rock Breaker	
Rock Grapple	
Screening Bucket	
Sieve Bucke	
Skeleton Buckett	
Sleeper Grab	
Tilting Bucket	
Trapezoidal Bucket	
Tree & Stump Mulcher	
Trenching Bucket	
SKID STEER ATTACHMENTS	BACKHOE ATTACHMENTS
Auger	Auger
Bucket Broom	Batter Bucket
Forks	Batter Bucket (Digger)
GP Bucket	GP Bucket
GPS	GPS
Levelling Attachment	Forks
Rake Bucket	Trenching Bucket
Trencher	
GRADER ATTACHMENTS	TELEHANDLER ATTACHMENTS
GP Bucket	Batter Bucket
Roller	Forks
	GP Bucket
	GPS
	Jib
TRACTOR ATTACHMENTS	
Grid Roller	
Hydraulic Angle Broom	



Backhoes

BRAND	MODEL	DIG DEPTH	BUCKET WIDTH	WEIGHT	DIMENSIONS (LxWxH)
Caterpillar	432	4.28 m	2.41 m	8.3 tonnes	5.9 x 2.4 x 3.8 m
JCB	4CX	4.32 m	2.33 m	8.1 tonnes	5.91 x 2.36 x 3.54 m
Komatsu	WB97R	4.8 m	2.3 m	7.6 tonnes	5.9 x 2.7 x 2.3 m
Caterpillar	428	5.89 m	0.457 m	8 tonnes	5.71 x 2.36 x 3.74 m
JCB	5CX	6.51 m	2.33 m	10.6 tonnes	6.74 x 2.36 x 3.97 m



Battery Packs ZERO EMISSION Lithium Iron Phosphate LiFePO4

BRAND	MODEL	RATED POWER	STORAGE	WEIGHT	DIMENSIONS (LxWxH)
Atlas Copco	ZBP45	36 kW / 45 kVA	46 kWh	1325 kg	1.3 x 1.16 x 1.9 m
Atlas Copco	ZBE45	12 kW / 15 kVA	46 kWh	1230 kg	1.3 x 1.16 x 1.9 m
Atlas Copco	ZBC100-500	100 kW / 100 kVA	537 kWh	9460 kg	2.99 x 2.43 x 2.9 m
Atlas Copco	ZBC150-500	150 kW / 150 kVA	537 kWh	9650 kg	2.99 x 2.43 x 2.9 m
Atlas Copco	ZBC250-500	250 kW / 250 kVA	537 kWh	9900 kg	2.99 x 2.43 x 2.9 m
Atlas Copco	ZBC500-250	500 kW / 500 kVA	250 kWh	8000 kg	2.99 x 2.43 x 2.9 m



Double Drum Vibe Rollers

BRAND	MODEL	TYPE	WEIGHT	ROLLER WIDTH	DIMENSIONS (L x W x H)
Husqvarna	LP6505	Walk Behind	765 kg	0.65 m	2.5 x 0.72 x 1.2 m
Husqvarna	LP7505	Walk Behind	1001 kg	0.75 m	2.5 x 0.82 x 1.26 m
Husqvarna	LP9505	Remote Control	1.68 tonnes	0.85 m	1.85 x 0.85 x 1.36 m
Caterpillar	CB2.7	Ride On	2.51 tonnes	1.2 m	2.5 x 1.3 x 2.7 m
Hamm	HD12VV	Ride On	2.6 tonnes	1.2 m	2.4 x 1.02 x 2.46 m
Bomag	8W120Ad-4	Ride on	2.6 tonnes	1 m	2.5 x 1.2 x 2.5 m
XCMG	XD120S	Ride On	2.7 tonnes	1.2 m	2.5 x 1.2 x 2.5 m
XCMG	XD140S	Ride On	4.3 tonnes	1.38 m	2.9 x 2.7 x 1.5 m



Dozers

BRAND	MODEL	WEIGHT	BLADE WIDTH	BLADE TYPE	DIMENSIONS (L x W x H)
Caterpillar	D6N	17.3 tonnes	4.08 m	PAT	4.1 x 3.02 x 3.19 m
XCMG	D170	17.4 tonnes	3.45 m		5.3 x 3.4 x 3.2 m
Caterpillar	D6T LGP	21 tonnes	3.69 m	Semi U	3.8 x 2.5 x 3.1 m
Caterpillar	D6T XL	21 tonnes	3.69 m	Semi U	3.8 x 2.5 x 3.1 m
Komatsu	D71PXi-24	23.2 tonnes	4.01 m	PAT	5.8 x 2.8 x 3.17 m
XCMG	D260	24.6 tonnes	5.6m	Straight	5.59 x 3.7 x 3.5 m
Komatsu	D65EXi-18	24.3 tonnes	4.06 m	Semi U	5.4 x 4.06 x 3.3 m
Caterpillar	D7R	25.7 tonnes	3.98 m	Semi U	7.1 x 2.88 x 3.39 m
XCMG	D360	35.6 tonnes	6.1 m	Semi U	9.09 x 4.13 x 3.7 m
Caterpillar	D8T	37.2 tonnes	4.25 m	U	7.87 x 3.06 x 3.46 m



Dumpers

BRAND	MODEL	NET LOAD	DUMPER TYPE	DIMENSIONS (L x W x H)
Wacker Neuson	DV90	9 tonnes	V	4.6 x 2.4 x 3.3 m
Thwaites	Mach594	9 tonnes	Front Tip	4.6 x 2.4 x 3.3 m



Dust Suppression Fans

BRAND	MODEL	POWER	GEN. REQUIRED	WEIGHT	DIMENSIONS (L x W x H)
Generac	DF 4500	4 kW	3 Phase 7.9 kW	290 kg	1.7 x 1.16 x 1.8 m
Generac	DF7500	7.5 kW	3 Phase 20 kW	760 kg	3.3 x 1.83 x 2.18 m
Generac	DF15000	15 kW	3 Phase 35 kW	810 kg	3.3 x 1.83 x 2.18 m
Generac	DF20000	20 kW	3 Phase 50 kW	850 kg	3.3 x 1.83 x 2.18 m



Excavators

BRAND	MODEL	WEIGHT	TRACKS	BUCKET CAPACITY	DIG DEPTH	DIMENSIONS (LxWxH)
Komatsu	PC15R	1.65 t	Rubber	0.04 m3	2.16 m	3.74 x 1.0 x 2.22 m
Sany	SY16C	1.75 t	Rubber	0.04 m3	4.0 m	3.57 x 0.98 x 2.42 m
Caterpillar	301.8	1.8 t	Rubber	0.03 m3	3.42 m	3.69 x 1.34 x 2.19 m
Komatsu	PC14R	1.8 t	Rubber	0.03 m3	3.28 m	3.38 x 1.3 x 2.32 m
XCMG	XE17U	1.8 t	Rubber	0.04 m3	2.29 m	3.56 x 1.24 x 2.34 m
XCMG	XE19U	1.9 t	Rubber	0.04 m3	2.52 m	3.55 x 1.3 x 2.39 m
Caterpillar	302	2.26 t	Rubber	0.33 m3	2.74 m	3.9 x 1.4 x 2.3 m
XCMG	XE27U	2.7 t	Rubber	0.06 m3	2.8 m	4.19 x 1.5 x 2.58 m
Komatsu	PC30MR	3.1 t	Rubber	0.09 m3	2.76 m	4.56 x 1.55 x 2.52 m
Hitachi	ZX33U	3.72 t	Rubber	0.08 m3	3.1 m	4.5 x 1.55 x 2.48 m



Excavators (CONTINUED)

BRAND	MODEL	WEIGHT	TRACKS	BUCKET CAPACITY	DIG DEPTH	DIMENSIONS (LxWxH)
Komatsu	PC35MR	3.73 t	Rubber	0.11 m3	3.11 m	4.9 x 1.74 x 2.52 m
Sany	SY35U	3.86 t	Rubber	0.12 m3	3.1 m	4.9 x 1.72 x 2.51 m
Komatsu	PC55MR	5.2 t	Rubber	0.07 m3	3.77 m	5.55 x 1.96 x 2.59 m
Sany	SY50U	5.3 t	Rubber	0.39 m3	3.42 m	5.39 x 1.96 x 2.63 m
XCMG	XE55U	5.7 t	Rubber	0.3 m3	3.64 m	5.34 x 1.83 x 2.55 m
Caterpillar	308CR	8.04 t	Rubber	0.23 m3	4.69 m	5.83 x 2.32 x 2.61 m
Komatsu	PC88MR	8.5 t	Rubber	0.34 m3	4.2 m	6.35 x 2.33 x 2.73 m
Sany	SY80U	8.8 t	Rubber	0.39 m3	4.53 m	7.1 x 2.2 x 2.55 m
XCMG	XE80U	9.5 t	Rubber	0.35 m3	3.99 m	6.58 x 2.3 x 2.73 m
XCMG	XE90U	9.5 t	Rubber	0.5 m3	3.99 m	6.58 x 2.3 x 2.73 m
Komatsu	PC130	13 t	Steel	0.08 m3	5.52 m	7.59 x 2.5 x 2.875 m
Sany	SY135U	13.5 t	Steel	0.6 m3	5.51 m	7.7 x 2.49 x 2.81 m
Komatsu	PC138US	13.85 t	Rubber	0.53 m3	5.48 m	7.26 x 2.85 x 4.4 m
XCMG	XE155DK	14.6 t	Steel	0.52 m3	5.535 m	7.79 x 2.67 x 2.9 m
Sany	SY155U	15 t	Wheeled	0.93 m3	5.4 m	8 x 2.6 x 3.2 m
Sany	SY155U	16 t	Steel	0.93 m3	5.46 m	7.3 x 2.49 x 3.82 m
XCMG	XE155UCR	16.6 t	Steel	0.65 m3	5.535 m	7.94 x 2.49 x 3.33 m
Hitachi	ZX160LC	17.5 t	Steel	0.82 m3	5.98 m	8.62 x 2.5 x 2.95 m
Hitachi	ZX210H	21 t	Steel	0.45 m3	6.6 m3	9.6 x 2.86 x 3.18 m
Caterpillar	320DL	21.69 t	Steel	1.4 m3	6.64 m	9.4 x 3.1 x 3.1 m
Caterpillar	320GC	21.9 t	Steel	1 m3	6.72 m	9.53 x 3.17 x 2.96 m
Sany	SY215C	22 t	Steel	0.93 m3	6.6 m	9.68 x 2.98 x 3.44 m
Sany	" Long Reach	22 t	Steel	0.45 m3	11.97 m	12.36 x 3.18 x 3.26 m
Komatsu	PC200LC	22 t	Steel	1.17 m3	6.62 m3	9.42 x 2.8 x 2.97 m
Komatsu	" Long Reach	22 t	Steel	1.17 m3		
Komatsu	PC210LCi	22.4 t	Steel	1.65 m3	6.62 m	9.6 x 2.98 x 3.04 m
XCMG	XE215LC	22.9 t	Steel	1.05 m3	6.68 m	9.625 x 3 x 3.1 m
Komatsu	PC228 Zero Swing	23 t	Steel	0.97 m3	7 m	9 x 3 x 3 m
XCMG	XE235UCR	26.1 t	Steel	1.0 m3	6.6 m	9 x 2.99 x 3.08 m
Sany	SY305H	32.8 t	Steel	1.4 m3	7.41 m	11.1 x 3.19 x 3.6 m
Komatsu	PC300LC	33.8 t	Steel	2.1 m3	6.54 m	11.4 x 3.19 x 3.48 m
XCMG	XE310LC	34 t	Steel	1.4 m3	7.04 m	10.7 x 3.19 x 3.3 m
Sany	SY365H	36 t	Steel	1.5 m3	7.05 m	11.5 x 3.19 x 3.5 m
Hitachi	ZX350H	36 t	Steel	1 m3	6.84 m	11.1 x 3.19 x 3.47 m
Komatsu	PC350LC	36.3 t	Steel	2.66 m3	6.7 m	11.29 x 2.99 x 3.4 m
XCMG	XE370DK	36.9 t	Steel	1.9 m3	6.9 m	11.3 x 3.2 x 3.5 m
Caterpillar	336	37.2 t	Steel	2.27 m3	8.2 m	11.2 x 3.44 x 3.17 m
XCMG	XE380LC	40.5 t	Steel	2.1 m3	7.2 m	11.3 x 3.2 x 3.5 m
Komatsu	PC490LCi	49.6 t	Steel	2.7 m3	7.7 m	11.9 x 3.5 x 3.6 m
XCMG	XE500LC	49.7 t	Steel	2.8 m3	7.7 m	12.3 x 3.5 x 4.1 m
Sany	SY500H	54.5 t	Steel	5 m3	7.7 m	12.1 x 3.6 x 3.87 m
Komatsu	PC600LC	61 t	Steel	3.8 m3	8.49 m	12.9 x 4.3 x 4.2 m
XCMG	XE700D	69 t	Steel	4.6 m3	6.9 m	12.1 x 4.4 x 4.7 m
XCMG	XE800LC	76.5 t	Steel	5.6 m3	7.4 m	12.6 x 4.4 x 3.7 m
XCMG	XE800D	78 t	Steel	5.6 m3	6.6 m	12.6 x 4.4 x 4.6 m
Sany	SY870	78.6 t	Steel	5.4 m3	7.24 m	13 x 4.3 x 4.7 m
Komatsu	PC850	79.8 t	Steel	8.4 m	4.3 m3	13.9 x 4.2 x 4.8 m
Komatsu	PC800LC	81.8 t	Steel	6.9 m3	8.4 m	13.9 x 4.3 x 4.8 m
XCMG	XE950DA	91 t	Steel	7 m3	6.9 m	12.1 x 4.4 x 4.7 m
XCMG	XE1350	121 t	Steel	7 m3	8.2 m	14.7 x 5.5 x 6.1 m
XCMG	XE2000	192 t	Steel	12 m3	5.9 m	13.6 x 7.1 x 7.9 m
XCMG	XE3000	290 t	Steel	15 m3	8.6 m	18 x 8 x 8.4 m
XCMG	XE4000	384 t	Steel	22 m3	8.4 m	20 x 9 x 8.59 m
XCMG	XE5600	569.7 t	Steel	35 m3	8.8 m3	22 x 10.3 x 9.1 m
XCMG	XE7000	672 t	Steel	34 m3	3.8 m3	23.5 x 9 x 9.4 m



Forklifts

BRAND	MODEL	MAX LOAD	LOAD CENTRE	LIFTING HEIGHT	WEIGHT	DIMENSIONS (LxWxH)
XCMG	FD25T	2.5 t	500 mm	3 m	3.8 t	3.7 x 1.1 x 2.05 m
Hyster	H2.5XT	2.5 t	500 mm	3.29 m	4.04 t	3.58 x 1.1 x 2.1 m
Hyster	H3.0XT	3 t	500 mm	3.1 m	4.65 t	3.69 x 1.2 x 2.19 m
XCMG	FD35T	3.5 t	500 mm	3 m	4.7 t	3.9 x 1.2 x 2.07 m
Liftsmart	LS-RT35	3.5 t	500 mm	4.1 m	5.6 t	4.3 x 1.59 x 2.4 m
Hyster	H4.0FT	4t	522 mm	3 m	6.29 t	3.9 x 1.7 x 2.1 m
JCB	945	4 t	600 mm	4.5 m	7.5 t	3.6 x 2.2 x 2.5 m
XCMG	FD50T	5 t	500 mm	3 m	7.9 t	4.7 x 1.99 x 2.5 m
Liftsmart	LS-RT50	5 t	600 mm	6 m	8.9 t	4.8 x 2.1 x 2.6 m
Manitou	MX50-4	5 t	600 mm	3.7 m	7.6 t	4.9 x 2.08 x 2.49 m
Enforcer	FLDAXF50	5 t	600 mm	4.5 m	8.9 t	4.8 x 2.1 x 2.5 m
Hyster	H5.0FT	5 t	600 mm	4.14 m	7.2 t	4.4 x 1.4 x 2.3 m
XCMG	FD70T	7 t	500 mm	3 m	9.3 t	4.8 x 1.99 x 2.6 m
Hyster	H8.00XM	8 t	600 mm	7 m	12.3 t	5.4 x 2.4 x 3 m
Crown	CD90S	9 t	600 mm	6.05 m	12.1 t	5.24 x 2.2 x 2.8 m
XCMG	XCF1006T	10 t	600 mm	3 m	12.4 t	5.5 x 2.1 x 2.85 m
Kalmar	DCG160	16 t	1200 mm	5 m	22.4 t	8 x 2.5 x 2.9 m
Hyster	H16.00XM	16 t	600 mm	6.6 m	19.7 t	6.5 x 2.6 x 5.5 m
XCMG	XCF1606K	16 t	1200 mm	3 m	19.5 t	6.2 x 2.5 x 3.3 m
XCMG	XCF3212K	32 t	1200 mm	4 m	43 t	9.2 x 3.46 x 4.1 m



Fuel Trucks & Trailers

CLASS	AXLE	CAPACITY	FUEL	FEATURES
Trailer	Dual	1000 Lt	Diesel	AS Compliant, electric brakes
Trailer	Dual	1200 Lt	Diesel	AS1692, CAT .3, auto shut-off nozzle
Trailer	Dual	1400 Lt	Diesel	AS Compliant, 12 V electric pump
Trailer	Dual	1500 Lt	Diesel	AS Compliant, electric brakes
Trailer	Dual	2000 Lt	Diesel	AS Compliant, spill kit,
Trailer	Dual	2200 Lt	Diesel	AS Compliant, electric brakes
Trailer	Tri	3000 Lt	Diesel	AS Compliant, electric brakes
Truck	NA	14,000 Lt	Diesel	AS1657-1992, mine spec.



Generators

BRAND	MODEL	POWER	OUTPUT	VOLTAGE	WEIGHT	DIMENSIONS (LxWxH)
Genmac	Combiplus	5 kVA	5.5 kW	230V	95 kg	810 x 550 x 680 mm
Denyo	6KVA Single	6 kVA	5.2 kW	240V	239 kg	1140 x 650 x 795 mm
Denyo	10ESX	10 kVA	8 kW	240V	503 kg	1390 x 650 x 900 mm
Globe	GP10KLR1	10 kVA	8 kW	240V	391 kg	1705 x 816 x 1168 mm
Globe	HAC15K	15 kVA	12.5 kW	240V	950 kg	1650 x 704 x 1923 mm
Denyo	DCA15LSK	15 kVA	16.5 kW	415V	516 kg	1390 x 650 x 900 mm
Genmac	Dynamic	20 kVA	16 kW	400V	726 kg	1900 x 800 x 1230 mm
Denyo	LG25IS	25 kVA	20 kW	415V	591 kg	1540 x 650 x 900 mm
Genmac	Strong	30 kVA	24 kW	400V	975 kg	2220 x 960 x 1258 mm
Denyo	DCA35SPK	35 kVA	32 kW	415V	890 kg	1900 x 860 x 990 mm
Denyo	LG40IS	40 kVA	35 kW	415V	910 kg	1980 x 850 x 1220 mm
Genmac	Strong	45 kVA	36 kW	400V	1247 kg	2213 x 960 x 1258 mm
Denyo	DCA60ES12	60 kVA	48 kW	415V	1120 kg	2200 x 880 x 1250 mm
Genmac	King	80 kVA	64 kW	400V	1403 kg	2250 x 1056 x 1700 mm
Genmac	Queen	100 kVA	80 kW	400V	1641 kg	2950 x 1056 x 1900 mm
Denyo	DACE100ESI	100 kVA	80 kW	415V	1730 kg	2750 x 1050 x 1350 mm
Cummins	PLG-CM164S	150 kVA	110 kW	415V	2035 kg	2860 x 1110 x 1960 mm
Cummins	PLGCT200S	220 kVA	160 kW	415V	2450 kg	3250 x 1126 x 2172 mm
Denyo	DCA220SPK3	220 kVA	200 kW	415V	3670 kg	3650 x 1300 x 1750 mm



Generators (CONTINUED)

BRAND	MODEL	POWER	OUTPUT	VOLTAGE	WEIGHT	DIMENSIONS (LxWxH)
Globe	GP250S	250 kVA	200 kW	400V	2530 kg	3300 x 1100 x 1770 mm
Genmac	Royal	300 kVA	240 kW	400V	3068 kg	3600 x 1226 x 2000 mm
Able	LG350CS	350 kVA	280 kW	380V	4100 kg	4350 x 1400 x 2260 mm
Genmac	Magnum	500 kVA	400 kW	400V	4800 kg	4500 x 1666 x 2250 mm
Denyo	DCA500SPK	500 kVA	450 kW	415V	8540 kg	5480 x 1650 x 2400 mm
Genmac	Omega	600 kVA	480 kW	400V	5970 kg	4500 x 1840 x 2540 mm
Genmac	Platinum	800 kVA	640 kW	400V	10000 kg	5800 x 1940 x 2550 mm
Genmac	Extreme	1035 kVA	828 kW	400V	11680 kg	8600 x 2200 x 3070 mm
Denyo	DCA1100SPK	1100 kVA	1000 kW	415V	13000 kg	6510 x 2200 x 2790 mm
Genmac	Extreme	1705 kVA	1364 kW	400V	15500 kg	9380 x 2200 x 3550 mm



Graders

BRAND	MODEL	MOULD BOARD	POWER	WEIGHT	DIMENSIONS (L x W x H)
XCMG	GR1003	3.05 m	81@2200 rpm	7.5 t	71 x 3.05 x 3.1 m
John Deere	772D	3.66 m	185@2100 rpm	15.5 t	10.3 x 3.66 x 3.1 m
XCMG	GR2405T	3.66 m	178@2200 rpm	17.5 t	9.3 x 3.66 x 3.4 m
Caterpillar	120M	3.7 m	138@2000 rpm	14.49 t	9.93 x 3.7 x 3.3 m
Caterpillar	140M	3.7 m	136@2000 rpm	16.5 t	10.1 x 3.7 x 3.3 m
Caterpillar	150M	3.7 m	136@2000 rpm	16.5 t	10.1 x 3.7 x 3.3 m
Caterpillar	160M	3.7 m	159@2000 rpm	16.8 t	10.1 x 3.7 x 3.3 m
Komatsu	GD555-5	3.71 m	193@2000rpm	18.1 t	10.3 x 3.71 x 3.2 m
Komatsu	GD65505	4.32 m	218@2100 rpm	18.5 t	10.5 x 4.32 x 3.2 m
John Deere	872G	4.27 m	175@2000 rpm	17.9 t	10.59 x 4.27 x 3.18 m
XCMG	GR2605T	4.27 m	194@2200 rpm	19 t	9.4 x 4.27 x 3.5 m
XCMG	GR3005T	4.57 m	242@2200 rpm	28.5 t	10.9 x 4.57 x 3.85 m
XCMG	GR3505T	4.87 m	261@2100 rpm	32 t	11.3 x 4.87 x 4.1 m
Caterpillar	16M	4.9 m	217@2000 rpm	30.6 t	11.6 x 4.9 x 3.7 m
XCMG	GR5505T	7.3 m	447@2100 rpm	74 t	16.4 x 7.3 x 4.8 m



Loaders

BRAND	MODEL	BUCKET	POWER	WEIGHT	DIMENSIONS (L x W x H)
Komatsu	WA150	1.5 m3	96@2000 rpm	7.5 t	6.32 x 2.39 x 3.03 m
Caterpillar	930K	2.1 m3	119@1800 rpm	13.1 t	7.53 x 2.54 x 3.34 m
Komatsu	WA270	2.3 m3	111@2000 rpm	13.4 t	7.51 x 2.47 x 3.2 m
Komatsu	WA250	2.5 m3	104@2000 rpm	13.8 t	6.9 x 2.55 x 3.2 m
Komatsu	WA320	2.6m3	123@2100 rpm	16.23 t	7.92 x 2.58 x 3.21 m
XCMG	XC968 EV	3.2 m3	Electric 270kW	21.6 t	8.66 x 2.99 x 3.45 m
Sany	SW405K	3.2 m3	195@2200 rpm	18.5	8.1 x 2.2 x 3.52 m
Komatsu	WA380	3.6 m3	143@2100 rpm	16.6 t	8.1 x 2.9 x 3.39 m
Caterpillar	950M	3.4 m3	151@2200 rpm	18.39 t	8.29 x 2.93 x 3.46 m
XCMG	XC958	3.5 m3	164@2200 rpm	19.6 t	7.07 x 2.85 x 3.34 m
Caterpillar	962M	3.8 m3	202@2200 rpm	20.2 t	7.2 x 2.8 x 3.44 m
Caterpillar	966M	3.8 m3	207@1800 rpm	23.2 t	7.28 x 3 x 3.52 m
XCMG	XC978	4.5 m3	216@2100 rpm	24.5 t	7.55 x 2.99 x 3.5 m
Komatsu	WA480	4.6 m3	173@2100 rpm	20 t	8.69 x 2.99 x 3.39 m
Caterpillar	972M	5 m3	251@2100 rpm	24.89 t	7.77 x 3 x 3.52 m
XCMG	XC998	5.4 m3	261@2200 rpm	30.5 t	7.99 x 3.35 x 3.9 m
Hitachi	ZW370	5.4 m3	288@1350 rpm	33.68 t	9.86 x 3.47 x 3.76 m
Caterpillar	980M	5.7 m3	313@1100 rpm	30 t	9.49 x 3.26 x 4.11 m
XCMG	XC9108	6.2 m3	277@2100 rpm	35 t	9.8 x 3.39 x 3.95 m
Komatsu	WA500	6.3 m3	263@1900 rpm	37.2 t	9.95 x 3.4 x 3.78 m
Caterpillar	982M	6.4 m3	317@1700 rpm	35.5 t	10.17 x 3.45 x 4.1 m
Komatsu	WA600	6.4 m3	393@1800 rpm	52.7 t	11.98 x 3.68 x 4.46 m
Volvo	L260H	7 m3	309@1500 rpm	33.98 t	7.59 x 3.16 x 3.72 m
XCMG	LW1200KN	7 m3	418@2000 rpm	53 t	12.35 x 3.98 x 4.3 m



Light Towers

BRAND	MODEL	LIGHTS	POWER	WEIGHT	DIMENSIONS (L x W x H)
Enviroled	ENV6MYMOBILE	6 x LED	320 W	900 kg	235 x 147 x 240 cm
CP	CPLT V15	4 x LED	350 W	702 kg	167 x 110 x 250 cm
Genmac	Bellatrix	4 x LED	320W	850 kg	233 x 147 x 245 cm
Generac	V20 Hyper	4 x LED	320 W	980 kg	220 x 140 x 244 cm
Globe	Urban GP65K	6 x LED	100 W	1900 kg	366 x 224 x 293 cm
Globe	GP6UrbanD	6 x LED	350 W	1706 kg	350 x 270 x 180cm
Globe	Smart GPFL200	2 x SOLAR	100 W	850 kg	100 x 100 x 290 cm



Multi Tyre Pneumatic Rollers

BRAND	MODEL	WEIGHT	ROLLER WIDTH	SPEED	DIMENSIONS (L x W x H)
Hamm	HP280	9.48 t	1.83 m	19 km/h	4.97 x 2.16 x 3 m
Ammann	AP240	9.34 t	1.99 m	19 km/h	4.8 x 2.3 x 3 m
Caterpillar	CW34LRC	9.65 t	2.09 m	19 km/h	5.35 x 2.16 x 3 m
Bomag	BW24RH	10 t	1.98 m	20 km/h	5.07 x 2.26 x 3.08 m
Caterpillar	CW34	10 t	2.09 m	19 km/h	5.35 x 2.16 x 3 m
Hamm	GRW280-20	18.3 t	2.08 m	19 km/h	4.67 x 2.14 x 2.99 m
XCMG	XP265S	26 t	2.075 m	19 km/h	5.28 x 2.175 x 3 m



Padfoot Vibe Rollers

BRAND	MODEL	WEIGHT	ROLLER WIDTH	VIBE FORCE	DIMENSIONS (L x W x H)
XCMG	XS83PD	8.73 t	1.68 m	125/85 kN	5.35 x 1.86 x 3.12 m
Caterpillar	CS56B	11.5 t	2.13 m	301 kN	5.86 x 2.3 x 3.11 m
Bomag	BW21I	12.62 t	2.13 m	275/202 kN	5.84 x 2.25 x 2.985 m
Caterpillar	CS12GC	12.65	2.13 m	149 kN	5.7 x 2.3 x 3 m
XCMG	XSI23PD	12.85 t	2.13 m	190/280 kN	5.94 x 2.3 x 3.25 m
Dynapac	CA362PD	14.1 t	2.13 m	300/146 kN	5.75 x 2.38 x 2.99 m
Caterpillar	CP68B	14.68 t	2.13 m	301/141 kN	6.05 x 2.33 x 3.11 m
Hamm	3516P	15.86 t	2.14 m	256/215 kN	6.075 x 2.27 x 2.95 m
Bomag	BW216	16.1 t	2.13 m	275/202 kN	6.1 x 2.3 x 2.26 m
Caterpillar	CP74B	16.3 t	2.13 m	332 kN	6.05 x 2.33 x 3.11 m
XCMG	XSI65PD	16.85 t	2.13 m	340/236 kN	6.01 x 2.31 x 3.15 m
Caterpillar	CP76B	17.68 t	2.13 m	332 kN	6.05 x 2.33 x 3.11 m
Sany	SSR180C	18 t	2.13 m	380/275	6.49 x 2.31 x 3.3 m
Hamm	3518P	18.02 t	2.22 m	331/243 kN	6.21 x 2.39 x 3.05 m
XCMG	XSI85PD	18.8 t	2.13 m	340/240 kN	6.99 x 2.35 x 3.2 m
Dynapac	CA6000PD	19.3 t	2.13 m	360/150 kN	6.2 x 2.3 x 3 m
Bomag	BW219D	19.4 t	2.13 m	314/240 kN	6.2 x 2.3 x 3.02 m
Hamm	3520P	19.8 t	2.22 m	331 kN	6.21 x 2.39 x 2.98 m
XCMG	XS205PD	20.8 t	2.13 m	385/270 kN	6.99 x 2.35 x 3.2 m
XCMG	XS265PD	26.3 t	2.36 m	435/315 kN	6.99 x 2.47 x 3.43 m



Plate Compactors

BRAND	MODEL	WEIGHT	PLATE WIDTH	FORCE	DIMENSIONS (L x W x H)
Husqvarna	LG 164	157 kg	350 mm	28 kN	119 x 350 x 1069 mm
Husqvarna	LG 204	211 kg	500 mm	36 kN	1334 x 500 x 1126 mm
Husqvarna	LG 300	270 kg	500 mm	40 kN	1385 x 500 x 1120 mm
Husqvarna	LG 400	398 kg	650 mm	52 kN	1690 x 650 x 1150 mm
Husqvarna	LG 504	513 kg	700 mm	65 kN	1670 x 750 x 1190 mm
Bomag	BPR 70	570 kg	700 mm	70 kN	980 x 850 x 1180 mm
Bomag	BPR 100/80	710 kg	650 mm	100 kN	1890 x 950 x 1080 mm
Husqvarna	LH 700	780 kg	660 mm	95 kN	1200 x 660 x 1470 mm
Husqvarna	LH 804	820 kg	660 mm	95 kN	1150 x 660 x 790 mm



Portable Buildings

TYPE	DESCRIPTION	DIMENSIONS (L x W x H)
Single Toilet	110 kg Single toilet cubicle	1190 x 1190 x 2310 mm
Single Shower	400 kg Single shower cubicle	1900 x 1800 x 2500 mm
Toilet & Shower Duo	2 Cubicles plus 2 x 450L water storage tanks	3900 x 2390 x 2500 mm
Ablution Block	4 Toilet cubicles plus 2500L & 1500L water tanks	6058 x 2438 x 2896 mm
Accommodation	2 Bedroom w/ single beds & RC air-con	6068 x 2438 x 2896 mm
First Aid Room	2 Rooms with sink, desk, table, bed, RC air-con	6058 x 2438 x 2896 mm
Hazardous Goods	Steel grid floor, vents and draining valves	6058 x 2438 x 2896 mm
Lunch Room	1 Room w/ tables, chairs, kitchenette, RC air-con	6058 x 2438 x 2896 mm
Office	2 Offices with desks, chairs, RC air-con	6058 x 2438 x 2896 mm
Hydration Station	Solar powered, 1000L water packs, chest freezer, air-con, 24/7 remote access	
Dome Shelter	Double dome shelter with workshop & storage	



Portable Steel Barriers

TYPE	LENGTH	WEIGHT	DIMENSIONS (L x W x H)
Male	6 m	562 kg	6000 x 540 x 800 mm
Female	6 m	555 kg	6000 x 540 x 800 mm



Pumps

BRAND	MODEL	TYPE	MAX FLOW	MAX HEAD	DIMENSIONS (L x W x H)
Euromacchine	Ardita	High Head	3255 L/pm	213 m	3500 x 1500 x 2500 mm
Atlas Copco	PACH64	High Head	7381 L/pm	152.4 m	1940 x 3250 x 2155 mm
Atlas Copco	VAR6-250	Surface Dewatering	5.67 L/pm	33 m	1070 x 2220 x 1670 mm
Sykes	HH80-325	Surface Dewatering	1783 L/pm	105 m	1870 x 910 x 1420 mm
Atlas Copco	PAS150HF	Surface Dewatering	6500 L/pm	51 m	2490 x 1080 x 1660 mm
Atlas Copco	PAS150MF	Surface Dewatering	9000 L/pm	37 m	1070 x 2220 x 1670 mm
Atlas Copco	PAS100MF	Surface Dewatering	9000 L/pm	42 m	1110 x 2560 x 1705 mm
Euromacchine	6NNT	Surface Dewatering	10,410 L/pm	42.6 m	2600 x 1100 x 1710 mm
Atlas Copco	PAS200HF	Surface Dewatring	15,823 L/pm	53 m	1940 x 3220 x 2195 mm
Euromacchine	6612T	Surface Dewatering	10,599 L/pm	89.9 m	2600 x 1100 x 1710 mm
Xylem	Flygt2400	Submersible Dewatering	100k L/pm	200 m	1135 x 930 x 930 mm
Calpeda	NMS	Submersible Dewatering	5000 L/pm	45 m	666 x 320 x 320 mm
Atlas Copco	Weda D30	Submersible Dewatering	1450 L/pm	25m	495 x 290 x 220 mm
Atlas Copco	D50	Submersible Dewatering	2300 L/pm	25 m	720 x 330 x 278 mm
Atlas Copco	WedaS30	Submersible Slurry	950 L/pm	18.59 m	620 x 326 x 250 mm
Calpeda	SDX	Submersible Slurry	850 L/pm	648 m	644 x 203 x 203 mm
Weda	L60N	Submersible Slurry	1200 L/pm	23 m	914 x 435 x 413 mm



Pump Accessories

TYPE	BRAND	CLEARANCE	DIMENSIONS (L x W x H)
Standpipe	Liquimech	4.2 m	3312 x 1760 x 4200 mm
Standpipe	Liquimech	4.8 m	3312 x 1760 x 4800 mm
Standpipe	Liquimech	5.2 m	3312 x 1760 x 5200 mm
Standpipe	Liquimech	5.8 m	3312 x 1760 x 5800 mm
Standpipe	Liquimech	6.5 m	3312 x 1760 x 6500 mm
Standpipe	Liquimech	8.6 m	3312 x 1760 x 8600 mm
Discharge Hose			
Flow Meters			
HDPE Pipe			
Hose & Cable Floats			
Pontoons			
Remote Monitoring			
Suction Hose			



Rigid Dump Trucks

BRAND	MODEL	PAYLOAD	WEIGHT	SPEED	DIMENSIONS (L x W x H)
XCMG	XDE130	120 Tonnes	205 Tonnes	50 km/h	12 x 6.79 x 6.42 m
XCMG	XDE200	180 Tonnes	320 Tonnes	56.3 km/h	13.8 x 7.3 x 6.85 m
XCMG	XDE240	230 Tonnes	395 Tonnes	64 km/h	14.78 x 9.11 x 7.44 m
XCMG	XDE260	220 Tonnes	404 Tonnes	64 km/h	14.59 x 9.1 x 6.35 m
XCMG	XDE320	300 Tonnes	510 Tonnes	64.5 km/h	15.07 x 9.25 x 6.84 m



Service Trucks

BRAND	MODEL	WHEELS	SPECS
Isuzu	NPS75-155	4	9 x compartment bunded cabinet, Kevrek 1500 ute crane
Isuzu	FVZ240-300	6	8 x liquid tanks, grease set up, compressor, bunded cabinet
Isuzu	FVZ240-350	6	8 x liquid tanks, grease set up, compressor, bunded cabinet
Isuzu	FVZ260-300	6	8 x liquid tanks, grease set up, compressor, bunded cabinet
Isuzu	FYH300-350	8	8 x liquid tanks, grease set up, compressor, bunded cabinet



Scissor Lifts

BRAND	MODEL	TYPE	WORKING HEIGHT	LIFT CAPACITY	DIMENSIONS (L x W x H)
Genie	GS1432	Electric	6.3 m	227 kg	2 x 0.77 x 1.88 m
Haulotte	Optimum 8	Electric	7.77 m	230 kg	1.72 x 0.79 x 1.98 m
Genie	GS1932	Electric	7.79 m	227 kg	1.83 x 0.81 x 2 m
Snorkel	S3219E	Electric	7.79 m	250 kg	1.78 x 0.81 x 2.11 m
XCMG	XG0807ACW	Electric	7.8 m	230 kg	1.9 x 0.81 x 2.01 m
JLG	R1932	Electric	7.8 m	230 kg	1.74 x 0.82 x 2 m
JLG	RT2669	Rough Terrain	7.98 m	680 kg	3.53 x 1.76 x 1.89 m
Snorkel	S2255RT	Rough Terrain	8.5 m	420 kg	3.3 x 1.45 x 2.5 m
JLG	ES2632	Electric	9.6 m	230 kg	3.27 x 0.81 x 2.2 m
Genie	GS2669RT	Rough Terrain	9.7 m	680 kg	3.12 x 1.75 x 1.92 m
Genie	GS2632	Electric	9.8 m	227 kg	2.44 x 0.81 x 2.3 m
XCMG	XG1008AC	Electric	10 m	230 kg	2.47 x 0.81 x 2.33 m
XCMG	XG1012AC	Electric	10 m	450 kg	2.47 x 1.17 x 2.35 m
JLG	RT3369	Rough Terrain	10 m	454 kg	4.6 x 1.76 x 2.62 m
Genie	GS3369RT	Rough Terrain	11.9 m	454 kg	4.5 x 1.6 x 2.59 m
JLG	R3246	Rough Terrain	11.8 m	320 kg	3.46 x 0.81 x 2.2 m
XCMG	XG1218RT	Rough Terrain	12 m	455 kg	3.83 x 1.76 x 2.58 m
Snorkel	3370RT	Rough Terrain	12 m	450 kg	3.4 x 1.8 x 2.7 m
Haulotte	Compact12DX	Rough Terrain	12.06 m	450 kg	3.17 x 1.78 x 2.56 m
JLG	RT4069	Rough Terrain	14.02 m	362 kg	4.6 x 1.6 x 2.62 m
Genie	GS4069RT	Rough Terrain	14.12 m	363 kg	4.5 x 1.75 x 2.74 m
Genie	GS4390RT	Rough Terrain	14.75 m	680 kg	3.94 x 2.36 x 1.8 m
XCMG	XG1523RT	Rough Terrain	15 m	680 kg	4.86 x 2.28 x 2.95 m
Genie	GS4655E	Electric	15.95 m	350 kg	3.11 x 1.41 x 2.77 m
JLG	ERT4769	Electric RT	16.3 m	363 kg	3.3 x 1.76 x 2.77 m
Genie	GS5390RT	Rough Terrain	17.95 m	680 kg	4.88 x 2.29 x 3.15 m
XCMG	XG1823RT	Rough Terrain	18.1 m	680 kg	4.86 x 2.28 x 3.17 m
LG	RT5394	Rough Terrain	18.15 m	680 kg	5.18 x 2.31 x 3.07 m



Smooth Drum Vibe Rollers

BRAND	MODEL	WEIGHT	ROLLER WIDTH	VIBE FORCE	DIMENSIONS (L x W x H)
Bomag	BW177D	7.2 tonnes	1.68 m	135/120 kN	4.91 x 1.83 x 2.86 m
XCMG	XS83	8 tonnes	1.68 m	125/85 kN	5.35 x 1.68 x 3.04 m
XCMG	XS123	12 tonnes	2.13 m	190/280 kN	5.94 x 2.3 x 3.15 m
Caterpillar	CS64B	12.05 tonnes	2.13 m	234 kN	5.85 x 2.3 x 3.11 m
Hamm	3412HT	12.2 tonnes	2.14 m	256 kN	5.7 x 2.25 x 2.95 m
Dynapac	CA252D	13.6 tonnes	2.13 m	246 kN	5.55 x 2.32 x 2.97 m
Caterpillar	CS68	14.3 tonnes	2.13 m	301/141 kN	6.05 x 2.33 x 3.11 m
Bomag	3516	15.7 tonnes	2.14 m	256/215 kN	6.07 x 2.27 x 2.95 m
XCMG	XS165	16 tonnes	2.13 m	340/236 kN	6.02 x 2.13 x 3.04 m
Bomag	216D	16.1 tonnes	2.13 m	275/202 kN	5.93 x 2.3 x 2.98 m
Caterpillar	CP76B	17.6 tonnes	2.13 m	332 kN	6.05 x 2.33 x 3.11 m
Hamm	3518 HT	17.8 tonnes	2.22 m	331/243 kN	6.21 x 2.39 x 2.98 m
XCMG	XS185	18 tonnes	2.35 m	340/240 kN	6.99 x 2.35 x 3.2 m
Sany	SSR180C	18 tonnes	2.13 m	380/275 kN	6.49 x 2.31 x 3.3 m
Caterpillar	CS78B	18.7 tonnes	2.13 m	332/166 kN	6.13 x 2.9 x 3.11 m
Dynapac	CA6000D	19.3 tonnes	2.13 m	360/150 kN	6.24 x 2.34 x 2.89 m
Hamm	3520	19.8 tonnes	2.22 m	331/243 kN	6.21 x 2.39 x 2.98 m
XCMG	XS205	20 tonnes	2.13 m	385/270 kN	6.99 x 2.13 x 3.2 m
XCMG	XS265	26 tonnes	2.47 m	435/315 kN	6.99 x 2.47 x 3.43 m



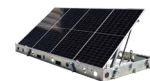
Solar CCTV Towers

BRAND	MODEL	CAMERAS	MAST HEIGHT	RECORD TIME
Globe Power	Solareye	2 x 4MP, 200° view, 50m night vision.	4.5 m	28 Days continuous



Skid Steer Loaders

BRAND	MODEL	TYPE	BUCKET	RATED LOAD	WEIGHT	DIMENSIONS (L x W x H)
Caterpillar	226B3	Tracked	0.36 m³	680 kg	2.64 t	3.23 x 1.52 x 1.95 m
Caterpillar	226D3	Wheeled	0.36 m³	680 kg	2.58 t	3.23 x 1.52 x 1.92 m
Caterpillar	246C	Wheeled	0.36 m³	680 kg	2.64 t	3.23 x 1.52 x 1.95 m
Caterpillar	242D3	Wheeled	0.36 m³	975 kg	3.17 t	3.49 x 1.68 x 2.11 m
XCMG	XC7-SSR07	Wheeled	0.4 m³	890 kg	2.95 t	3.41 x 1.8 x 1.96 m
Caterpillar	239D	Tracked	0.4 m³	930 kg	3.306 t	3.23 x 1.67 x 2.03 m
XCMG	XC7-SR08	Wheeled	0.4 m³	955 kg	3.2 t	3.41 x 1.8 x 1.96 m
Caterpillar	249D	Tracked	0.4 m³	1044 kg	3.49 t	3.23 x 1.68 x 2.04 m
Caterpillar	259D3	Tracked	0.4 m³	1315 kg	4.057 t	3.486 x 1.75 x 2.11 m
Caterpillar	279D	Tracked	0.48 m³	1331 kg	4.49 t	3.71 x 1.98 x 2.11 m
XCMG	XC7-SR10	Wheeled	0.6 m³	1100 kg	3.55 t	3.76 x 2 x 2.04 m
XCMG	XC7-TV10	Tracked	0.6 m³	1100 kg	4.75 t	3.85 x 2 x 2.08 m
XCMG	XC7-SR12	Wheeled	0.6 m³	1260 kg	3.68 t	3.76 x 2 x 2.04 m
XCMG	XC7-TV12	Tracked	0.6 m³	1360 kg	5.15 t	3.78 x 2 x 2.1 m



Solar Panels

POWER	VOLTAGE	CURRENT	WEIGHT	DIMENSIONS (L x W x H)
1.78 kWp	196.8 v	11.45 A	750 kg	4455 x 2240 x 3000 mm



Tampers

BRAND	MODEL	WEIGHT	PLATE WIDTH	FUEL	DIMENSIONS (L x W x H)
Husqvarna	LT 5005	62kg	230 mm	Petrol	726 x 345 x 1025 mm
Husqvarna	LT 6005	70 kg	280 mm	Petrol	726 x 345 x 1084 mm
Husqvarna	LT 8005	99 kg	330 mm	Diesel	796 x 444 x 1088 mm



Telehandlers

BRAND	MODEL	MAX LIFT WEIGHT	MAX LIFT HEIGHT	WEIGHT	DIMENSIONS (L x W x H)
JCB	532-60	3 tonnes	6.22 m	752 tonnes	4.69 x 2.28 x 2.49 m
JCB	531-70	3.1 tonnes	7 m	6.9 tonnes	4.99 x 2.23 x 2.49 m
Manitou	MT-X732	3.2 tonnes	6.9 m	758 tonnes	4.76 x 2.34 x 2.3 m
Merlo	TF35.7-115	3.5 tonnes	6.6 m	6.7 tonnes	4.315 x 2.24 x 2.24 m
Manitou	MT-X1840	4 tonnes	13.53 m	11.6 tonnes	6.16 x 2.42 x 2.45 m
Merlo	TF42.7-100	4.05 tonnes	7 m	8 tonnes	4.73 x 2.31 x 2.53 m
JCB	541-70	4.1 tonnes	7 m	7.8 tonnes	4.99 x 2.23 x 2.49 m
Merlo	P60.10EE	6 tonnes	9.55 m	10.2 tonnes	5.34 x 2.24 x 2.44 m
Dieci	Samson70.10	7 tonnes	9.5 m	12.1 tonnes	5.91 x 2.38 x 2.49 m
Merlo	P72.10EE	7.2 tonnes	9.2 m	11.3 tonnes	5.48 x 2.24 x 2.5 m



Telescopic Boom Lifts

BRAND	MODEL	WORKING HEIGHT	REACH	LOAD CAPACITY	DIMENSIONS (L x W x H)
Genie	S-45XC	15.5 m	11.02 m	300 kg	9.47 x 2.49 x 2.51 m
Genie	S-65XC	21.8 m	16.5 m	300 kg	9.7 x 2.49 x 2.81 m
XCMG	XGS22K	22 m	17.2 m	300 kg	9.85 x 2.49 x 2.53 m
Genie	S-85XC	27.9 m	22.7 m	300 kg	12.37 x 2.49 x 2.8 m
XCMG	XGS40K	40.2 m	24.9 m	300 kg	12.5 x 2.49 x 3 m
Genie	SX-135 XC	43.15 m	27.4 m	300 kg	19.7 x 3.94 x 3.05 m
XCMG	XGS58K	58.6 m	24.4 m	230 kg	14.6 x 2.49 x 3.07 m



Tipper Trucks

BRAND	MODEL	WHEELS	TIPPER VOLUME	POWER
Isuzu	FXZ 240-350	6	11,300 m³	257 kW @ 2000 rpm
Hino	FM2628	6	11,000 m³	206 kW @ 2500 rpm
Isuzu	FBZ 260-300	6	11,000 m³	221 kW @ 2400 rpm
Isuzu	FYJ 300-350	8	14,000 m³	257 kW @ 2000 rpm



Tool Carriers

BRAND	MODEL	BUCKET	POWER	WEIGHT	DIMENSIONS (L x W x H)
XCMG	XC938	2.1 m³	99 kW @ 2200 rpm	11 t	7.7 x 2.48 x 3.04 m
Komatsu	WA250	2.2 m³	104 kW @ 2000 rpm	12.3 t	7.38 x 2.47 x 3.2 m
Hitachi	ZW180	2.8 m³	129 kW @ 1500 rpm	14.98 t	7.96 x 2.53 x 3.28 m
Komatsu	WA320	2.7 m³	123 kW @ 2100 rpm	15.5 t	7.69 x 2.74 x 3.2 m
XCMG	XC948	2.1 m³	142 kW @ 2200 rpm	16.5 t	7.88 x 2.54 x 3.64 m
Volvo	L110F	2.8 m³	169 kW @ 1700 rpm	18.1 t	8 x 2.67 x 3.36 m
Volvo	L150H	3.1 m³	220 kW @ 1300 rpm	25.6 t	9.68 x 3.1 x 3.58 m
Volvo	L180F	4.6 m³	234 kW @ 1400 rpm	26.6 t	9.03 x 2.95 x 3.58 m
Volvo	L220H	5.2 m³	279 kW @ 1400 rpm	32.8 t	8.79 x 3.15 x 3.73 m



Tractors

BRAND	MODEL	LIFT CAPACITY	POWER	WEIGHT	DIMENSIONS (L x W x H)
Kubota	M7040	1,055 kg	46.3kW@2600rpm	2.43 t	3.44 X 1.86 X 2.46 m
MF	8S.205	10,000 kg	165kW@1650 rpm	8.7 t	5.37 x 3 x 3.39 m



Traffic Lights & Signage

TYPE	POWER SUPPLY	SOLAR INPUT	WEIGHT	DIMENSIONS (L x W x H)
Traffic Lights	12 Volts	165 W	300 kg each	2.08 x 1.22 x 3.06 m
Variable Message	12 Volts	350 W	740 kg	2.83 x 1.76 x 3.6 m



Trailer Mounted Boom Lifts

BRAND	MODEL	WORKING HEIGHT	REACH	LOAD CAPACITY	DIMENSIONS (L x W x H)
Snorkel	MHP13/35	12.6 m	5.6 m	227 kg	5.99 x 1.58 x 2.05 m
Genie	TZ-34/20	12.36 m	5.59 m	227 kg	5.5 x 1.45 x 1.94 m
Snorkel	MHP13AT	12.9 m	6.4 m	215 kg	4.9 x 1.6 x 2.0 m
Genie	TZ-50	16.92 m	8.89 m	227 kg	7.16 x 1.68 x 2.08 m



Vehicles MINE SPEC.

BRAND	MODEL	BODY	SEATS	DRIVE TYPE	LICENCE
Toyota	Landcruiser	Steel Tray Ute	3	4 x 4	C Class
Isuzu	D-Max	Steel Tray Ute	5	4 x 4	C Class
Mitsubishi	Triton	Steel Tray Ute	5	4 x 4	C Class
Toyota	HiLux	Steel Tray Ute	5	4 x 4	Class
Toyota	HiLux	Well Body Ute	5	4 x 4	C Class
Isuzu	D-Max	Well Body Ute	5	4 x 4	C Class
Toyota	Prado	SUV	5	4 x 4	C Class
Toyota	HiAce	LWB Van	12	4 x 4	C Class
Toyota	Coaster	Bus	22	4 x 2	LR Class



Water Storage Tanks

CAPACITY	MATERIAL	FRAME	TYPE	DIMENSIONS (L x W x H)
4,500 L	LDPE-HDPE	Reinforced	All water types	1.8 x 1.8 x 2 m
30,000 L		Skid Mounted	All water types	6.05 x 2.43 x 2.89 m



Water Trucks

VOLUME	BRAND	MODEL	BODY	DIMENSIONS (L x W x H)
10,000 L	Hydrema	912ES	Articulated	6.76 x 2.49 x 3.06 m
14,000 L	Isuzu	FBZ 260-300	Rigid	7.6 x 2.44 x 3.2 m
14,000 L	Hino	500	Rigid	9.3 x 2.49 x 3.2 m
15,000 L	Isuzu	FBZ 260-300	Rigid	7.6 x 2.44 x 3.2 m
15,000 L	Hino	500	Rigid	9.3 x 2.44 x 3.2 m
15,000 L	Mercedes	Axor	Rigid	7.7 x 2.48 x 3.2 m
16,000 L	JCB	Fastrac 185/65	Articulated	
20,000 L	Isuzu	FYH 300-350	Rigid	6.01 x 2.01 x 3.2 m
20,000 L	Iveco	AD450 6x6	Rigid	8.2 x 3.2 x 3.5 m
26,000 L	Komatsu	HM300	Articulated	10.5 x 3.5 x 3 m
33,000 L	Komatsu	HM400	Articulated	11.1 x 3.45 x 3.75 m
35,000 L	Komatsu	HM400	Articulated	11.1 x 3.45 x 3.75 m

EX DEMO SALE

XC968 EV

Pure Electric

Wheel Loader

Comes with

CIVIL SPEC

GP BUCKET

QUICK HITCH

PORTABLE CHARGER



\$345K+GST

Available in WA,
NT, SA, & QLD.
While stocks last.

Add a set of Manual Forks for \$8,500+GST

XC948 TOOL CARRIER



Operating Weight - 16.5 tonnes
Bucket Size - 2.1m³
Rated Power - 142 kW @ 2200 rpm

XC978 WHEEL LOADER



Operating Weight - 24.5 tonnes
Bucket Size - 4.5m³
Rated Power - 216 kW @ 2100 rpm

GR2405T GRADER



Operating Weight - 17.5 tonnes
Blade - 12/14 foot
Rated Power - 178 kW @ 2200 rpm

GR2605T GRADER



Operating Weight - 19 tonnes
Blade - 14 foot
Rated Power - 194 kW @ 2200 rpm

XE90U EXCAVATOR



Operating Weight - 9.5 tonnes
Engine Model - Kubota V3307
Rated Power - 54.6 kW @ 2200 rpm

XE155U EXCAVATOR



Operating Weight - 16.6 tonnes
Engine Model - Cummins QSF3.8
Rated Power - 93 kW @ 2200 rpm

XE310LC EXCAVATOR



Operating Weight - 34 tonnes
Engine Model - Cummins QSL9
Rated Power - 202 kW @ 2100 rpm

XE380LC EXCAVATOR



Operating Weight - 40.5 tonnes
Engine Model - Cummins QSL9
Rated Power - 214 kW @ 2100 rpm

XDA45 ARTIC. DUMP TRUCK



Payload - 41 tonnes
Driving Speed - 47 km/h
Rated Power - 390 kW @ 1600 rpm

XP265S MULTI TYRE ROLLER



Operating Weight - 26 tonnes
Machine Width - 2.5 m
Rated Power - 104 kW @ 2200 rpm

XS185SPD PADFOOT ROLLER



Operating Weight - 18.8 tonnes
Drum Width - 2.13m
Vibe Force - 340/240 kN

XS265 SMOOTH ROLLER



Operating Weight - 26 tonnes
Drum Width - 2.47m
Vibe Force - 435/315 kN

XGA12K ARTIC. BOOM LIFT



Working Height - 12.5m
Reach - 7.1m
Platform Capacity - 230kg

XGA16K ARTIC. BOOM LIFT



Working Height - 16.6m
Reach - 8.82m
Platform Capacity - 256kg

XGS22K STRAIGHT BOOM



Working Height - 22m
Reach - 17.2m
Platform Capacity - 300kg

XG1218RT SCISSOR LIFT



Working Height - 12m
Type - Rough Terrain
Platform Capacity - 455kg

AUTHORISED DEALER FOR



In WA, SA, NT, and the majority of QLD

BROOKS
EQUIPMENT



1300 BROOKS (276 657)
sales@brooksequipment.com.au
www.brooksequipment.com.au