

YOUR FREE COPY

THE *Eneabba*

SUMMER 2022 / 2023

ISSUE 11

Simply Frannatastic

BROOKS RETURNS TO
THE CRANE GAME



➤ The Hire Advantage

➤ Demolition Masterclass

➤ The Great Harley Giveaway



BROOKS
HIRE

BROOKS
ACCESS

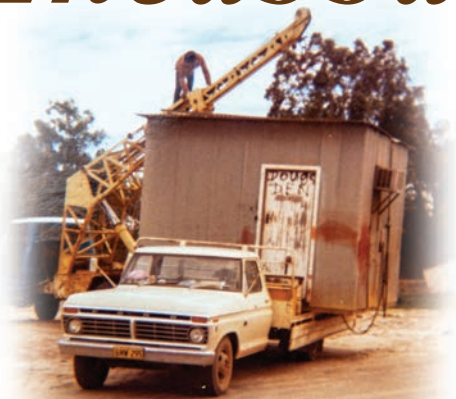
BROOKS
AIRWAYS

BROOKS
EQUIPMENT

BROOKS
TRANSPORT

BROOKS

The story of *Eneabba*



When 23 year old Doug Brooks recognised an opportunity to hire out equipment to the mining industry in WA in 1979, he knew it was something he had to pursue. Doug scrambled together every dollar he had, to purchase two disassembled compressors, with the remainder of the bill being settled by bankcard. He opened 'Brooks Hire Service' and ran the business from a shed in the remote WA town of Eneabba. All the while Doug was living in a 'humpy' at the rear of the shed. There were many that warned him of the difficulty of starting a new business in a very competitive industry, but Doug was determined and it was only a matter of time before he was turning a profit on his compressors. What started as two compressors on hire, soon turned into twelve pumps on hire, but the turning point came when Doug purchased his first piece of mobile equipment, an eight tonne JEC crane. There are many great stories that came out of that shed in Eneabba. It was the foundation of Brooks Hire and the place where all of the 'hard yards' were done. Eneabba is remembered as the birth place of Brooks Hire Service.



From the MD...

When I look back at the year just gone, the amount of growth that Brooks has achieved hardly feels real. Each division has prospered independently, making the whole group stronger.

To say we're 'flying high' is quite literally true with the launch of Brooks Airways in 2022. Our fleet of jets has started being branded, and we are receiving plenty of work through charter flights, FIFO flights, and air freight. Keep your eyes in the air for the big yellow tail. With international travel back on the rise, Medical Air has also been very busy.

While we're on the subject of machines in the air, Brooks Access has been growing strong and steady. We've now got 135 access machines in 13 of our branches across Australia. All of this started from the idea to offer our customers another line of equipment. With the introduction of Brooks Cranes, we're hoping to give our customers even more variety.

The team at Brooks Equipment has plenty to celebrate. When we became the official dealers for Sany in WA just over a year ago, Sany was a little known brand in Australia. Now, Sany is the 3rd highest selling excavator brand in WA! We also took on the exclusive Sany dealership for Northern Territory in 2022. There's more exciting Sany news in the pipeline - watch this space.

Brooks Hire has also seen strong growth. Thanks to the hard work of our hire staff, we've reached a record 1370 machines simultaneously on hire. At this time four years ago, it was only 390. The Site Services team played a large part in bringing up our hire numbers. Well done to you all.

Of course, all of this growth wouldn't be possible without the support of our loyal and ever growing customer base. When Dad started Brooks Hire back in 1979, his main focus was customer service. As a family, we've continued to strive for customer satisfaction across all divisions.

So, to our customers, thank you for your continued support. From my family to yours, we wish you a very prosperous year ahead.

Stuart Brooks
Managing Director

Access Equipment

FOR SALE

OWN IT!

JLG

R1932 Scissor

From **\$12** PER DAY

OWN IT!

Haulotte

HA16 RJT Knuckle

From **\$62** PER DAY

OWN IT!

Genie

GS1932 Scissor

From **\$12** PER DAY

1300 BROOKS

sales@brooksaccess.com.au

www.brooksaccess.com.au

BROOKS

ACCESS

THE *Eneabba* SUMMER 22/23 **contents**



- 03** **Simpy Frannatastic**
Brooks returns to the crane game



- 05** **Demolition Masterclass**
Spotlight on the demolition industry



- 07** **The Greatest Show on Earth**
bauma 22



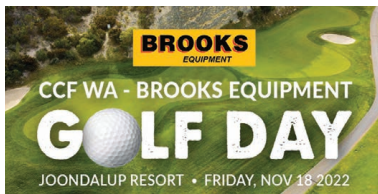
- 09** **Clear Skies Ahead**
Brooks Airways Rottneest Island charter



- 11** **The Hire Advantage**
When hiring is the better solution



- 13** **In Pole Position**
Using positioning technology in the fleet



- 15** **A Great Day on the Green**
Brooks Equipment hosts CCF WA Golf Day



- 17** **Events & Exhibitions**
Out and about with Brooks



- 19** **New Machines**
Take a look at what's been rolling in

BROOKS

CONTACT DETAILS

Brooks Hire Service Head Office

30 Coulson Way
Canning Vale WA 6155

Phone: 1300 276 657

Email: sales@brookshire.com.au

www.brookshire.com.au

The Eneabba is a Brooks Hire Service Pty Ltd publication. All photographs and written articles remain the property of Brooks Hire Service Pty Ltd. No reproduction in whole or in part of this publication is allowed without the permission of the Managing Director.

If you would like to make a submission, please email marketing@brookshire.com.au

Digital Distribution 10,902
Printed Copies 5,000



- 21** **The Great Harley Giveaway**
Brooks gives away 20th Harley Davidson



- 23** **Brooks Around the Nation**
Jingle bells, jingle bells...



- 26** **Welcome Aboard**
Meet the new faces at Brooks



- 29** **Candis' Kitchen**
Candis gives us one of her famous creations

- 30** **Kids' Corner**
Get your crayons ready kids

- 31** **The Puzzler Page**
Flex your brain over a cup of coffee

- 34** **Snap That**
Staff photography competition

- 35** **Equipment Hire List**
View our entire fleet with specs

Simply Frannatastic



Brooks Returns to the Crane Game

The recent delivery of a Franna MAC 25-4 Crane marks the launch of a new Brooks division - Brooks Cranes. It also marks Brooks' return to the crane industry after a 22-year hiatus.

As most people who are familiar with the Brooks Hire story would know, the business was founded off the back of two un-serviceable air compressors purchased by Doug Brooks in 1979. From there the business grew to acquire other small equipment such as pumps, generators, and welders. Then in 1982, Doug purchased his first mobile piece of plant, a second hand JEC crane.

At that time, Brooks Hire Service was still operating out of a tin shed in the remote WA town of Eneabba, approximately 275km north-east of Perth. Doug tendered a total of \$30,150 for the crane and won the bid. Next, he had to find a way to pay for it.

"I went and got a broker so I could borrow the money for the crane," said Doug, "and they offered me an interest rate of 24%. Then a few days later, they came back and said the banks wouldn't lend me the money because I was high risk with no business experience."

Doug was left high and dry. He'd just won the tender and now he couldn't finance the purchase. He scraped together about \$800 and approached the broker again, this time they came back with an offer of 27% interest. "Deal," he said.



Brooks Hire's first crane at the workshop receiving repairs to the boom & extension ram in 1982

Stretched to his financial limits, Doug then faced the problem of how to transport the crane from Perth to Eneabba. To freight the machine by low loader would have cost \$500.

"Geez, I didn't have 500 bucks to spend on a low loader," said Doug, "so I hopped in it and started driving at first light in the morning."

"As I was driving, I started getting sideways on the road and I was pointing at a truck," he said. "So I reefed the steering wheel and came off the accelerator at the same time. Now, with those cranes, as soon as you released the accelerator, you lost the hydraulic steering, so I ran right off the road," he recalled with a chuckle.

After a gruelling 13-hour journey, Doug, with his trusty dog, Jack, on board, arrived safely at Eneabba on last light. The crane was soon out on hire to Allied Eneabba where it remained on hire seven days a week for around six years. If it ever broke down, or needed maintenance, Doug would be straight out there to fix it, to keep it on site and working.

Following Brooks Hire's relocation to Perth in 1987, a further three cranes were purchased, but by 2000, all cranes were retired from the fleet. Since then, Brooks hasn't had any cranes in their hire fleet. That is, until now.

The brand new Franna MAC 25-4 arrived at Brooks' Welshpool yard in mid October and is the first asset on the books for new entity, Brooks Cranes. This model was chosen for its tried and tested versatility in a range of difficult lifting applications.

The mobile articulated crane features a maximum lifting capacity of 25 tonnes. A unique feature of the MAC 25-4 is its patent protected Longitudinal Moment Indicator (LMI) which offers operators a dynamic real time calculation of rated load capacity. It does this by taking into account the current boom configuration, as well as chassis articulation, pitch and roll. When operated on a jobsite over undulating terrain, the rated capacity will be updated continually, providing instantaneous information on the percentage utilisation. This means that operators are no longer required to manually calculate a reduction of rated capacity - the crane does it for them.



In addition to the Franna MAC 25-4, Brooks Cranes has also purchased a Franna AT 22. This pick and carry model has similar key features to the MAC 25-4, but with a lifting capacity of 22 tonnes. The AT 22 is expected to arrive in the coming months.

Brooks Cranes is currently being managed by Brooks Access General Manager, Claire Harrison, with the rest of the Access team standing behind her.

"It's really exciting to be a part of the launch of Brooks Cranes," said Claire. "By diversifying the equipment that we have on offer, we've really been able to better service our customers' needs," she went on to explain.

Long gone are the days of appealing for finance. Brooks Hire is now the largest privately owned construction equipment hire company in Australia. With 20 branches Australia wide, and an ever growing list of equipment hire categories, Brooks will continue to diversify to meet the needs of our clients. If you require a crane on your jobsite, call our friendly hire team on 1300 BROOKS (276 657) or go to www.brookshire.com.au and get an easy online quote.





Demolition Masterclass

Spotlight on the Demolition Industry

Recently, Brooks Equipment has become a partner of the Demolition Industry Association of WA (DIAWA), a subsidiary branch of the Demolition Industry Association (DIA). We caught up with DIA President, and Diacon Demolition Owner, Frank Di Angelo, to discuss the benefits of being a member of the association, using a registered member of DIAWA, and challenges faced by the demolition industry.

DIAWA was formed over 3 decades ago, circa 1988, by a group of Perth based demolition contractors. The vision was a collaborative approach in unifying and bettering the local demolition industry. Some 30 years on, DIAWA is still going strong with similar modern visions. DIAWA is WA's demolition asbestos removal peak industry body and provides a voice for its members across the industry. Since its inception, DIAWA has focused on industry topics and reforms such as playing a key part in the introduction of demolition licencing in 2001 for WA.

So what are the benefits of being a DIAWA member?

Being a DIAWA member, your company or organisation will be directly in contact with a large broad membership base made up of some of the most experienced, and largest demolition contractors, and industry supply networks in the country.

The annual DIA corporate forum brings together key industry stakeholders such as Worksafe, WA Walga, WRIWA (Waste Association), ADSA (Asbestos Disease Society Australia), Brooks Equipment, IPS Insurance Group, and other industry advisers. The forum helps members gain a better understanding of the rapidly changing demolition industry.

Over recent years, DIAWA's growth has seen the opportunity for engagement with stakeholders at various levels, including legislative bodies, suppliers, and other affiliated industry associations. This engagement allows the promotion of latest technology and best practice offerings, aiding the vision of a safe, sustainable, and progressive demolition industry.

In 2022, the inaugural DIAWA Awards were held during the DIAWA Christmas Dinner at Frasers Restaurant, Perth. Finalists across four demolition and recycling categories included Demosafe Australia, Diacon Demolition, and REDe Bricks. The winners were Merit Consulting Group, MACS Australia Group, Delta Group, and Vinsan Salvage. It was a successful night with plenty of buzz and discussion surrounding quality of projects and entrants' submissions. There is a high level of enthusiasm towards the future 2023 awards.

Benefits of using a DIAWA member

DIAWA has administrative systems in place to ensure compliance, insurances, licencing, and training is correctly implemented. Members are required to abide by a DIA code of ethics and best practices. Prior to onboarding, new members are required to prove that their company is capable of fulfilling these requirements. This allows customers of DIAWA members to be at ease when utilising their services.

What are the main challenges that Diacon Demolition has faced in the demolition industry?

The main challenges faced, not only by myself, but on behalf of all of our members, have been exacerbated by the recent worldwide pandemic. Costs are rising daily, and we have difficulty sourcing staff. Despite being one of the most hazardous industries, the demolition industry is not recognised as a 'trade'. This means that we fall under the construction industry banner with no formal trade recognition for those wishing to start a career in demolition.

What project are you most proud of and what did it involve?

There are many hundreds that I've personally completed in my 30 plus years in the game, but to mention three, the most memorable would have to be these;



The toppling and demolition of the former NASA tracking station in Carnarvon, WA. Standing at over 100m, the structure was taller than the Statue of Liberty, and taller than a 25 storey building. Pre-planning was essential in utilising an engineered induced cut and pull technique. This project received international recognition for the safe and successful demolition, and recycling of this massive structure.

Another project that I'm proud of, was the complex dismantling and demolition of the BHP Yule River Rail Bridge which is located in the Pilbara, 205 km from the town of Port Hedland, WA.

More recently, I was involved in the undertaking of the BHP Mines Accommodation Program. This involved stringent mobilisation procedures including being parachuted to site in remote areas, such as Area C and Newman in the northwest of WA. This project is one of Australia's largest mining camp demolition of infrastructure, and I played a key role in the demolition, remedial work, and recycling of the project. This was not one of your standard demolition projects, but never the less, the project was completed safely and successfully, before being handed over to the client and community.



Frank Di Angelo from Diacon Demolition

Tell us about the equipment used for demolition work.

The main obvious tool of choice in most demolition contractors' arsenals, is of course the hydraulic excavator (along with an array of cordless power and modern hand tools). The technology advancement with these marvellous metallic mechanical dinosaurs have come a long way in the past four decades. These machines were once regarded as just a piece of 'digging equipment'. Now, they are nearly every demolisher on the planet's key piece of equipment. Contractors also have access to an array of hydraulic and mechanical attachments. Specialised demo spec. built, fully armoured-up demolition rigs can be made to order and can come with enhancements such as being equipped with high reach and ultra-high reach booms, designed to tackle multi storey buildings and structures. This eliminates the use of labour in such high-risk areas.

Demolition work can be extremely dangerous, so we recommend seeking a professional and reputable demolition contractor who is a DIAWA Member. Stay tuned for all our new up and coming social media platforms and website on www.demoindustrywa.com.au.





Image copyright of Messe München.

The Greatest Show On Earth **bauma 22**

'bauma' is the world's largest trade fair for construction machinery, building material machines, mining machines, construction vehicles, and construction equipment.

In 2022, the event was held at the Messe München Trade Fair Centre in Munich, Germany from 24th to 30th October. A total of 3,200 exhibitors from 60 countries, and nearly half a million visitors from over 200 countries, attended the fair, including Lenore Brooks from Brooks Hire.

Spread over a massive area of 614,000 square meters (the same as roughly 86 soccer fields), the event was split into 414,000 square meters of outdoor space and 200,000 square meters of hall space. In addition to excavators, dump trucks, asphaltting machines and mixing towers, bauma also featured the famous "crane forest" with more than 30 cranes.

The top 10 exhibitor countries were, in this order: Germany, Italy, Turkey, Great Britain and Northern Ireland, the Netherlands, France, the U.S., Austria, Spain and China. The share of international exhibitors was nearly 65 percent.

"This bauma has again stoked enthusiasm and fascination!" exclaimed Stefan Rummel, the CEO of Messe München, responsible for the event.

"After the world fundamentally changed following the last bauma (in 2019), we're really thrilled that bauma 2022 demonstrates the trade fair remains a powerhouse of the construction-equipment industry thanks to our customers' great variety of innovations, good business deals and many visitors from all over the world."



The Sany Display at bauma 22.

In terms of business communications and sales, bauma 22 proved to be highly successful for many of the exhibitors, with some claiming it was the most successful in history. In addition to being a highly successful business platform, bauma also set a focus on topics of the future.

The five key topics for the trade fair were:

- Construction methods and materials of tomorrow
- The way to autonomous machines
- Mining - sustainable, efficient, reliable
- Digital construction site
- The way to Zero Emission

Reflected in the five key topics, Digitalisation and Automation dominated conversation at the trade fair.

The development of autonomous machinery for construction sites and mining operations is taking huge leaps forward, even if there is still a long way to go until full automation is reached. Automating and digitalising construction processes and machinery will reduce greenhouse-gas emissions and ensure productivity in this age of skilled-worker shortages.

Human machine interfaces (HMI), and safety systems, used in autonomous construction machinery and autonomous underground mining equipment also increase worker safety.

"bauma gives exhibitors and visitors an opportunity to already experience the future today."

ANDREAS KLAUSER, CEO PALFINGER



Komatsu PC4000e-11 Electric Excavator

"The exhibitors are offering solutions to address current challenges related to CO² neutrality as well as tackling the issue of skilled worker shortages with automation and digitalization. This is the future," said Franz-Josef Paus, Managing Director of Paus Maschin-fabrik GmbH and Chairman of the bauma Advisory Board.



Brooks Hire Chief Business Officer, Lenore Brooks, was invited by Komatsu Australia to attend the event with their staff and other clients. The six day visit included networking dinners, three days to explore bauma, and a visit to the BMW museum.

"The event was on a massive scale with every supplier under the sun," exclaimed Lenore. "I was surprised at how many machines Europe has that Australia never sees. Of note, was the large array of electric machinery on display," she continued.

Komatsu's stand at bauma was spread over 4,550m² and featured 27 machines. One of the most impressive machines on display was the monstrous PC4000e-11 electric excavator weighing in at a whopping 400 tonnes (own weight). Also on display, was a HD785-7 dump-truck with 91 tonnes loading capacity. At the other end of the scale, Komatsu also released their PC01E-1 electric micro excavator at bauma. This little machine weighs just 340kg, uses no fuel, and can be conveniently charged with 100V household electricity.

"Attending bauma was a great opportunity to network with potential and existing suppliers and customers," said Lenore. "A real bond was formed within the group. I've got memories for a lifetime."

bauma 23 is scheduled to be held from 31st January to 3rd February at the India Expo Centre in Delhi, India.



Lenore Brooks at the BMW Museum

Clear Skies Ahead

Brooks Airways Rottnest Island Charter



Brooks Airways has been taking advantage of the clear blue skies in Perth, offering charter flights to Rottnest Island, Margaret River, and beyond.

The airline company was acquired by Brooks earlier this year and has since rebranded a number of aircraft, ready to offer charter flights, corporate mining flights, FIFO flights and cargo transfers, Australia-wide from their flight base in Perth.

Tuesday 18th October provided perfect weather conditions for a lucky group of Brooks staff to experience the charter first hand. The recently painted Twin Prop Turbo King Air, VH-ZXM, affectionately known as "Zulu" was the aircraft of choice for the charter which was scheduled to depart Jandakot Airport at 10.30am that morning.

Pilots Matt Guetlich, and Rod Smith gave a brief safety rundown before welcoming guests aboard the aircraft. With comfortable seating for up to nine passengers, the guests included Doug Brooks, Stuart Brooks, Keith Brooks, Michael O'Grady, Claire Harrison, Ben Cook, Penny Chu, Julia Supranovich, and Linda Smith.

With not a breath of wind in the clear blue sky, Zulu taxied down the runway for a very smooth take off.





Perth served up a vast array of colourful landscapes as the aircraft travelled inland before heading down the coast to Mandurah to take in the Peel region's waterways and marina. It then looped around to Rottnest Island and its famous turquoise blue bays.

Rottnest Island Airport is located approximately 800m from the main settlement at Thomson Bay. This makes it a short and convenient walk to the local hotel where guests enjoyed a casual lunch. The local quokkas were very friendly, providing plenty of opportunities for a quokka selfie. After an enjoyable day on the island, the Brooks crew headed back to Perth at around 4.30pm



Brooks Airways is certified with the Civil Aviation Safety Authority (CASA), and Regional Aviation Association of Australia (RAAA). They offer charter flights from Perth to anywhere in Australia. Bespoke day trips or weekend packages can be designed to suit the needs of the client, making them perfect for work team building events, hen's and buck's parties, or family getaways. Brooks Airways also provides charter flights, FIFO flights, and air freight to the mining industry.



Call Brooks Airways on 1300 AIRWAY (247 929).



The Hire Advantage

When Hiring is the Better Solution



The development and expansion of a company is facilitated by the equipment acquired to complete the work and generate money. The decision whether to purchase equipment or hire it, comes down to individual company factors.

With over 70 years of experience in the equipment hire industry, and – through demand - expansion into the equipment sales industry, the Brooks group of companies greatly understand the purpose each serve in their individual markets.

Recognising the benefits of both hire and sales in the equipment industry, we sat down with Brooks Access General Manager, Claire Harrison, to hash out the top reasons when hiring is more beneficial than buying.

Unmatched Convenience

Where buyers will aptly note that purchasing equipment allows for greater freedom in its application – not bound by hire agreements with potential restrictions – hiring machinery can provide freedom of a differing kind: the freedom of flexibility.

While owning equipment offers the freedom to use the equipment whenever, wherever and for whatever application desired, hiring offers a greater selection of machinery to work with, and the convenience of machine upkeep, as well as any associated costs of ownership, covered by the hire company.

“The machine is delivered to site, serviced for you, and once you are finished with it, we look after all the off-hire duties from there.”

CLAIRE HARRISON, GENERAL MANAGER OF BROOKS ACCESS

When a company would benefit from the use of a range of machines for varying tasks, over the course of a job, purchasing equipment isn't always viable. Hiring specific machines for select tasks and returning them once completed, reduces costs in machine downtime and storage fees. For instance, seasonal contractors would reap the rewards of hiring equipment in periods of high or low demand, where inordinate levels of equipment might be required one month, and far fewer the next. Claire surmises: “Hiring provides companies greater flexibility with operational planning and resourcing of projects.”

Furthermore, few companies could not financially support the purchasing of multiple machines, in which case, rather than making do with the efficiencies of one machine over a range of applications, hiring can allow them to utilise three or four machines on a modest payment plan.

Latest & Greatest

Technological advancements have dominated every sector, pushing the barriers to more efficient and innovative ways of working. Within the equipment hire industry, these advancements have seen features elevating operator functionality, safety standards, and performance output.

Such technologies include EQSS safety load management systems installed in telehandlers, automatic weight sensing for operational zone restricting, and GPS location data technologies in boom lifts with diagnostic functions including live run time and sensor information.

"Hiring equipment," shares Claire, "enables organisations to stay ahead of the technology curve, access a larger inventory and take advantage of more efficient new models."

Cost Efficiency

Past the initial purchase price, equipment is expensive to maintain. Hiring eliminates the financial burdens of servicing, repairing, and upgrading equipment. Whether there be routine maintenance requirements or unexpected breakdowns, the Hire Agreement will ensure the equipment is running as it should be, with the hire company liable for the incurred charges.

Managing your balance sheet is oftentimes made easier in the hiring of equipment, with standard, set payments. "Not only does hiring eliminate high interest rates and upfront costs," says Claire, "but it also reduces carrying costs associated with large amounts of inventory and frees up capital that can be better spent in other areas of the company."



Unforeseen circumstances do arise occasionally, and when they do, hiring equipment provides a safety net in the knowledge and support of a wider team. Brooks Access has a team of highly qualified mechanics, on call 24 hours a day, 7 days a week, to keep machines up to date on all services.

In the current market, with production disruptions and supply chain shortages, having a large stock of parts and trusted relationships with OEMs, allows businesses like Brooks Access to purchase parts faster, keeping your site functioning at its full capacity.

Whether you're a smaller business, looking to forgo the upfront costs of purchasing a machine, or a larger company, minimising the work associated with maintaining it, hiring machinery can have a considerable impact to your company. To find out more, speak to the Brooks Hire team at www.brookshire.com.au or Brooks Access team at www.brooksaccess.com.au.



Photo credit: TJM Earthworks



In Pole Position

Using Positioning Technology in the Fleet

Brooks Hire has partnered with Position Partners for a number of years to ensure we can deliver a more efficient service to our customers. Brooks currently utilise a range of Topcon machine control and weighing technology, in conjunction with Tokara, Position Partners' remote access and support service.

"Our relationship started with Brooks a number of years ago when they were hiring plant and equipment to sites across Australia and increasingly machine control equipment was becoming a requirement on those projects," said Clay Grono, Construction Sales Manager WA, Position Partners.

"Brooks Hire uses Topcon machine control and weighing technology due to the ease of use for the operators, and also our market leading technology and our Tokara remote support."

Topcon machine control gives you user friendly workflows to manage projects and designs seamlessly across all machine types and makes, survey rovers, and more.

When customers and Position Partners technicians were asked what they love most about Topcon 3D machine control, the leading benefit was how user friendly and intuitive the interface is. Some other specific benefits they called out, are:

- You can isolate and create surfaces on the fly
- Multiple buckets can be saved and changed at the press of a button
- Change all radio settings (except add new channels).
- You can take topo shots
- There are so many display options – section views, on screen text
- You can even change the background colour

Topcon weighing scales optimise organisational services, providing access to precise weight readings, enhanced inventory management, and risk reduction.

Topcon on-board weighing systems are designed to increase efficiency and productivity in construction, mining and industrial applications by delivering accurate weight information to the machine operator via an easy-to-read control box mounted inside the cab. Loading accurately each time reduces return trips to the stockpile, saving on fuel usage and machine wear.

Topcon weighing scales have become a favoured investment across industries where ascertaining product weight is an essential consideration in risk prevention, process optimisation, and commercial transacting. This small device holds an exceptional reputation amongst consumers with an ability to significantly streamline business operations, presenting itself as an indispensable asset across a broad range of applications.

The value behind Topcon weighing scales includes:

- Live inventory control and material management
- Enhanced process efficiency
- Loading error prevention

Brooks Hire customers have been very vocal about their satisfaction with the Topcon 3D machine control in their workplace.



"The machine and the technology work really well together. All of our customers are very happy with the system."

GARY BUSHELL, BROOKS HIRE BDM

"Everything works spot on. We chose this technology because it's advanced and the systems are updated regularly. With Position Partners, the back-up service is really good and when we need something fitted, Position Partners are there fitting it for us," said Gary Bushell, Brooks Hire BDM.



"At Position Partners, we have always prioritised timely and efficient support because we know that if your machine control system isn't working then you're not making money," said Aaron Krenske, Networking Solutions Manager at Position Partners. "This led us to the development of Tokara, which enables our technicians to solve most problems without even visiting the site," Aaron went on to explain.

Tokara is the gateway to every machine and asset on site, allowing you to send and receive files from most leading positioning technology brands and machine makes.

Position Partners has tailored the Tokara service to deliver benefits for a wide range of stakeholders involved in a civil construction project, including:

- Project Managers: proactively manage and ensure all machines, sub contractors and survey crews are working to the latest design file.
- Machine operators: work efficiently with design updates, support and training available in the cab.
- Surveyors: send design files to machines and supported survey devices remotely to ensure everyone's working to the correct design.
- Foremen: easy to read map gives you quick access to all machines and survey assets, site-wide.
- Contractors: keep track of all equipment across multiple projects.

"We saw an increase in demand from our customers wanting more technology onsite, with scales, weighing systems, and GPS solutions," said Lenore Brooks, Chief Business Officer of Brooks Hire. "Of course, we wanted to fill this need and deliver our customers a more efficient service. We find that Position Partners are a great partner to deliver that technology," Lenore continued.

Brooks Hire will continue to invest in new technology for our fleet.

Brooks Equipment CCF WA Golf Day

For the second year running, Brooks Equipment Sales was the major sponsor for the Civil Contractors Federation of WA (CCF WA) annual Golf Day.

The event was held on Friday 18th November at Joondalup Golf Course. Despite a very grim weather forecast, a total of 216 golfers donned their wet weather gear and braved the elements for 18 holes of golf, all for a good cause.



Weight restrictions on the course limited the Brooks Equipment Sany display to just one machine, a Sany SY16C mini excavator. This gave our other divisions, Brooks Access, and Site Services, the opportunity to display their equipment including a JLG R1932 scissor lift, and a trailer pump. In true 'Brooks' style, there were plenty of yellow banners around the course, and our distinctive yellow goody bags were available to all players.

Brooks Team #1 was made up of Brooks Equipment General Manager, Nathan Fenemer, Brooks Equipment Sales Representative, Lea Clarke, Paramount General Manager, Adrian Hughes, and Paramount Managing Director, Shaun Tilley.

Brooks Team #2 comprised of Brooks Site Services Operations Manager, Mitch Foxon, Project Manager Lee Van Bizen, Hire Coordinator, Blair Chamberlain, and Ryan Wilhelm from Precision Drilling.

Major Motors Isuzu sponsored the 'Hole in One' competition, giving players the chance to win a brand new Isuzu ute. Unfortunately there were no holes In one to celebrate that day.





One team that did have good reason to celebrate, was the National Pump and Energy Team, who were the winners of the day. It was smiles all round as they took possession of the perpetual MATES Cup. Congratulations and fair play to you all.



The CCF WA Golf Day is held every year to raise funds for MATES In Construction. MATES is a charity that was established in 2008 to reduce the high level of suicide among Australian construction workers. Construction workers are six times more likely to die from suicide than from an accident at work. MATES provides suicide prevention through community development programs on sites, and by supporting workers in need through case management and a 24/7 help line. This year, the Brooks Equipment CCF WA Golf Day raised a total of \$2,960 for the charity.

Brooks Equipment are proud to throw our support behind such a worthy cause. We'd like to thank the entire CCF WA team for organising such a fantastic event once again. We look forward to bringing out the clubs again next year, hopefully the weather will be a little shinier next time.



ACBC Gala Ball

The Australia Chinese Business Council (ACBC) held their Gala Ball on Wednesday 9th November. Brooks Hire were an Associate Sponsor at the event which celebrated 50 years of Australian and Chinese relations.



City of Canning Mayor's Charity Gala Ball

Stuart and Cassie Brooks were in attendance at the City of Canning Mayor's Charity Gala Ball, recently.

In what is believed to be a first for the WA local government sector, the City of Canning has reframed its Annual Civic Mayoral Dinner to have a charitable focus and raised a whopping \$72,753.85 for local charity Good Sammy.

Good Sammy Enterprises provides valuable employment pathways for people with disabilities. Good Sammy will direct some of the proceeds to four local social programs to directly benefit the Canning community.



RMHC WA Gala Ball

The Ronald McDonald House Charity (RMHC) Gala Ball is one of Perth's premiere social events. This year the theme of the ball was 'Flourish', representing the supporting role that RMHC WA plays for families with a sick or injured child, to support the families wellbeing throughout their medical journey, to ensure the child and family can flourish during difficult times.

The Brooks family has been Gold Partners with the RMHC Gala Ball for 20 years. "We take our hats off to the dedicated volunteers and staff who make this charity the success that it is," said Roma Brooks. Thanks to the generous support of all attendees, the ball raised \$1.5 million.



PICTURES: Territorians flock to Christmas Pageant



Thousands flock to Darwin's Christmas Pageant dressed in their Christmas finest. Were you snapped? See all the pics here.

Darwin Christmas Pageant

Brooks' Covergirls, Naomi Blewit and Brooke (the blue macaw), have done it again, getting a front page spot in the NT News. The Darwin team participated in the Darwin Christmas Pageant on Saturday, 19th November. The theme of the Brooks float was 'All I Want For Christmas' which included a mini excavator being driven by the Grinch, a unicorn, and loads of pressies. The Darwin Christmas Pageant is a fantastic community event and it was a great privilege for Brooks to be involved.



Women In Leadership Summit



The Women in Leadership Summit was held on 29th & 30th November. This event was designed to offer women the opportunity to connect with other incredible and inspiring women and hear more about their experiences. Jenni Torsiello, Lenore Brooks, and Claire Harrison attended on behalf of Brooks. 10% of event proceeds were donated to UN Women Australia to mobilise womens' empowerment efforts in the region, to ensure all women and girls have equal opportunities.

MCA NT Gala Ball

Naomi & Lyle Blewit had a very busy day on Friday 25th November. The couple attended the Civil Contractors Federation NT annual President's Christmas Luncheon during the day, followed by the Mineral Council of Australia's Gala Ball in the evening. Brooks had two excavators on display at the latter event which made an excellent photo backdrop for guests.



Perth & Darwin Major Projects Conference

Brooks were representing at both the Perth and Darwin Major Projects Conference recently. Nathan Fenemer and Naomi Blewit manned the stand in Darwin which was held on 18th & 19th October. Jacinta Pickering from Brooks Access, and Troy Turner from Site Services, were at the Perth event on 29th & 30th November.



New Equipment

THE BROOKS FLEET OF ASSETS

BROOKS
HIRE

Caterpillar 988K Wheel Loaders x 2

Brooks Hire has two of these brand new, quality front end loaders available for hire in the new year. Fitted with a massive 6.3m³ rock bucket, the Cat 988K is the crème de la crème of front end loaders. Both machines come fully mine spec'd. Features include 43° steering articulation, load-sensing hydraulic steering system, computerised monitoring system with warning indicators, standard Cat Vision and pressurised cabin. Available anywhere in WA, be the first to drive them.



BROOKS
CRANES

The very first asset for Brooks Cranes arrived in the form of a Franna MAC 25-4. This mobile articulated crane has a lifting capacity of 25 tonnes and is available for hire anywhere in Western Australia.

Equipment for the Site Services department of Brooks Hire has been steadily increasing.

New stock that arrived over the last quarter includes generators, lighting rowers, air compressors, portable buildings, accommodation units and toilets, traffic management, and fuel trailers/tanks.

We've also got a good supply of new mine spec. light vehicles, mini vans, and buses available for hire.

Scissors, telescopic booms, knuckle booms, telehandlers, forklifts, and more. Brooks Access has taken delivery of a multitude of new machines over the quarter, resulting in a total fleet of 135 machines over 13 branches nationwide. Not bad for it's second year of trading. Pictured here, is General Manager, Claire Harrison, taking delivery of three new Optimum 8 Haulotte scissor lifts.



As soon as they roll in the gate, they're rolling back out. Sany excavators have become so popular, that they are now in the top 3 selling excavators in WA. Brooks Equipment has the full range of sizes from 1.75t up to 78t, along with hitches, buckets, and parts in WA & NT.





The Great Harley Giveaway

Brooks Gives Away 20th Harley Davidson Motorcycle



2003: Doug and Roma Brooks with the first Harley Davidson motorcycle winner, Andy Gorringer from Complete Underground Power.

2022 marked the 20th annual Harley Davidson Giveaway for Brooks Hire.

The tradition started in 2003, when Doug Brooks offered his customers the chance to win a special edition 'Soft Tail' Harley'. As the hire industry started to tighten up, Doug wanted to find a way to retain and grow his customer base.

"I see it as a way to give back to my customers," said Doug.

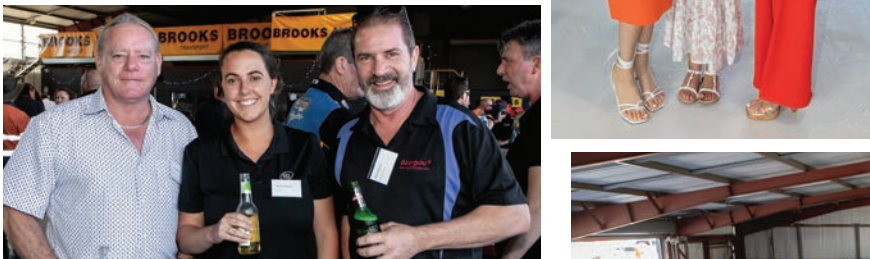
At that time, all invoices over \$300 were entered in the draw, with each machine invoiced separately so that customers with multiple machines on hire received multiple entries. In 2022, the invoice amount was increased to \$1500, and clients from all Brooks divisions, including Brooks Access, Brooks Equipment, and Brooks Transport were entered in the draw.

On Friday 2nd December 2022, Brooks welcomed clients, friends, and staff to a Christmas Sundowner, and to draw the winner of the 2022 Harley Davidson, a Deadwood Green Soft Tail 'Street Bob'. As per tradition, a customer from the crowd was invited to spin the barrel. On this occasion, Bernard O'Sullivan from Rapid Crushing & Screening was on hand to do the honours. Also keeping in line with tradition, the CEO of Civil Contractors Federation of WA, Andy Graham, was invited to take a lucky dip and draw a winner.

Congratulations to Jim London of Gencon Civil who was the winner of the 2022 Harley Davidson. Although unable to make it to the draw, Jim was "beyond excited" with his prize. Next year we'll be giving away a Vivid Black Soft Tail - good luck everyone!



2022 Harley Davidson motorcycle winner
Jim London from Gencon Civil.



Christmas Celebrations

Brooks Staff Christmas celebrations were in full swing over December. Merry Christmas everyone!







Smoko On Brooks

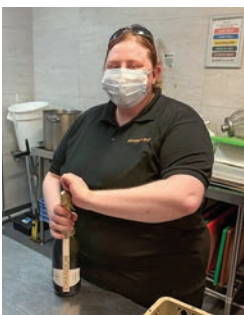
During September and October, the Brooks Sydney Branch ran a 'Win Smoko on Brooks' promotion. Workers could enter their jobsite in the draw for a chance to win bacon and egg rolls, and iced coffees for their whole team. Four winners were chosen over four weeks.

Mark, Cisco, and Tim from the Sydney team, turned up with barbecues, bacon, eggs, onions, and even haloumi cheese to feed the teams at Austral Construction, Shoalhaven Coal, Daracon, and Western Eartmoving.



RMHC Home For Dinner

Ronald McDonald House provides a 'home away from home' for the families of sick children. The 'Home For Dinner' program gives volunteers the opportunity to prepare a homemade dinner for these families. On Tuesday, 27th September, seven of our dedicated Perth based staff attended Ronald McDonald House to volunteer their services to the 'Home For Dinner' program.



Shout out to Candis Daccache, Katelyn Gibson, Monique Matesich, Jenni Torsiello, Lenore Brooks, Vanessa Crawford, and Brooke Longden for their volunteer work.

Welcome Aboard

This edition, we're introducing you to our Brooks Airways team.

Shane Gifford

What was your first job: Motorcycle Mechanic at Bunbury Ducati

What is your role at Brooks Airways: General Manager.

What achievement in life are you most proud of: Development of Formula Aviation and Medical Air.

How would you describe yourself in 3 words: Honest, Reliable, and Caring.

Where would we find you on the weekends: Riding my Ducati, spending time with family.

What is something that you're really good at: Organising.

What is something that you're really bad at: Tolerance.

If you could invite anybody to dinner (dead or alive), who would it be: Richard Branson.

Favourite Cake: Mud cake.

Favourite song: 'More Than A Feeling' by Boston.

Favourite holiday destination: New Zealand.



Michael O'Grady

What was your first job: Apprentice aircraft engineer at British Aerospace, Manchester UK.

What is your role at Brooks Airways: CEO and CASA Accountable Manager.

What achievement in life are you most proud of: Start-up from scratch an aerospace manufacture and repair organisation called Advanced Aero Industries, after 10 years of hard work, the company was taken over by Gardener Aerospace, a major international aviation group.

How would you describe yourself in 3 words: Optimistic, Trustworthy & Attentive.

Where would we find you on the weekends: Playing golf, cooking or doing whatever the wife tells me to do.

What is something that you're really good at: Difficult question, I think too modest to say I'm really good.

What is something that you're really bad at: It's not really bad, but I would describe my biggest weakness as McVitie's chocolate hobnobs.

If you could invite anybody to dinner (dead or alive), who would it be: Mam (Lily) and Dad (Bryan) x.

Favourite Cake: Anything with chocolate?

Favourite song: At the moment, I'm chilling out to some Cuban tunes, but next week it could be Little Simz or the Sex Pistols, who knows?

Favourite holiday destination: I enjoy all travel and have been quite fortunate to travel extensively, I would say South Island of New Zealand.



Allan Archibald

What was your first job: Cigarette Salesman in London.

What is your role at Brooks Airways: Chief Pilot.

What achievement in life are you most proud of: Flying the Boeing 777 for Emirates.

How would you describe yourself in 3 words: Ambitious, Stubborn, and Generous.

Where would we find you on the weekends: Summer time - on my boat or camping.
Winter time - renovating my house.

What is something that you're really good at: Being on time.

What is something that you're really bad at: Singing and dancing.

If you could invite anybody to dinner (dead or alive), who would it be: Sir Richard Branson.

Favourite Cake: Homemade cheesecake.

Favourite song: "You've Lost That Lovin' Feeling" by Righteous Brothers.

Favourite holiday destination: Any tropical beach resort.



Jill McInroy



What was your first job: Paper Round.

What is your role at Brooks Airways: Flight Operations Assistant.

What achievement in life are you most proud of: Being a commercial pilot.

How would you describe yourself in 3 words: Blonde, Happy, Tidy.

Where would we find you on the weekends: Shopping.

What is something that you're really good at: Buying handbags.

What is something that you're really bad at: Not buying handbags.

If you could invite anybody to dinner (dead or alive), who would it be: My Mum.

Favourite Cake: Cheesecake.

Favourite song: "Whole of the Moon" by The Waterboys.

Favourite holiday destination: Hawaii.

Paul Macintyre

What was your first job: Milking cows @ 13 years old.

What is your role at Brooks Airways: Chief Engineer.

What achievement in life are you most proud of: Licensed to work on business jet aircraft on 3 different continents.

How would you describe yourself in 3 words: "OWL" - Older, Wiser, Larger.

Where would we find you on the weekends: On the beach in my Jeep.

What is something that you're really good at: Fixing stuff (anything).

What is something that you're really bad at: People.

If you could invite anybody to dinner (dead or alive), who would it be: Chuck Yeager.

Favourite Cake: Chocolate anything.

Favourite song: Bohemian Rhapsody.

Favourite holiday destination: Somewhere tropical on the beach but they must speak English.



Luca Amante

What was your first job: Whale Shark Spotter Pilot but in the 'real world' I started as a tyre fitter.

What is your role at Brooks Airways: Learjet Captain.

What achievement in life are you most proud of: Delivered aid, water, food, and other critical supplies as well as participating in the evacuation of more than 250 sick, injured, and displaced people from the area affected by the earthquake / tsunami in Indonesia.

How would you describe yourself in 3 words: Disciplined, Dedicated, Enthusiastic.

Where would we find you on the weekends: Probably high above the clouds heading to South East Asia to rescue a patient.

What is something that you're really good at: Cooking but even better at eating.

What is something that you're really bad at: Washing dishes without breaking any glasses.

If you could invite anybody to dinner (dead or alive), who would it be: The legend that took me up for my first flight and that let me fly it for free (I wish I knew his name).

Favourite Cake: I'd rather have gelato but if I have to mention one, perhaps a Mimosa.

Favourite song: Every moment has its music and I don't always listen to Metallica, but when I do, Nothing Else Matters.

Favourite holiday destination: Italy.



Lance Avey

What was your first job: Apprentice Aircraft Maintenance Engineer.

What is your role at Brooks Airways: Licenced Aircraft Maintenance Engineer.

What achievement in life are you most proud of: Getting my pilots licence and flying all over the WA outback maintaining aircraft.



How would you describe yourself in 3 words: Short, Skilful, and Reliable.

Where would we find you on the weekends: Working around the house and property, and then hanging out in the shed tinkering with all sorts while having a coldie and playing heavy rock music.

What is something that you're really good at: Fixing anything and everything.

What is something that you're really bad at: Dancing and being tall.

If you could invite anybody to dinner (dead or alive), who would it be: Bon Scott, and of course my grandparents.

Favourite Cake: Mum's Black Forest Cake.

Favourite song: 'One' by Metallica.

Favourite holiday destination: Canada - A tough decision between summer and winter though. But if I had to choose, it would be winter for the skiing and snowmobiling.

Georgie Page

What was your first job: Checkout Chicky - Dewsons North Beach.

What is your role at Brooks Airways: Office Manager.

What achievement in life are you most proud of: Jumping out of aircraft at 14,000 feet.



How would you describe yourself in 3 words: Bat Shit Crazy (PC version - Loud, Loyal, Mischevious).

Where would we find you on the weekends: Day drinking and day napping.

What is something that you're really good at: Refer above.

What is something that you're really bad at: Not applicable.

If you could invite anybody to dinner (dead or alive), who would it be: My grandparents.

Favourite Cake: Beefcake (or carrot).

Favourite song: I simply cannot choose just one.

Favourite holiday destination: New Zealand.



Paul Tomlinson

What was your first job: Aeronautical Engineer at Test Flight and Development Centre, South African Air Force.

What is your role at Brooks Airways: Co-Pilot Learjet.

What achievement in life are you most proud of: An unblemished record in a 33 year airline career.

How would you describe yourself in 3 words: Dedicated, Dependable, Honest.

Where would we find you on the weekends: Outdoors.

What is something that you're really good at: Clay target shooting.

What is something that you're really bad at: Fishing.

If you could invite anybody to dinner (dead or alive), who would it be: Winston Churchill.

Favourite Cake: Chocolate Brownies.

Favourite song: Bohemian Rhapsody by Queen.

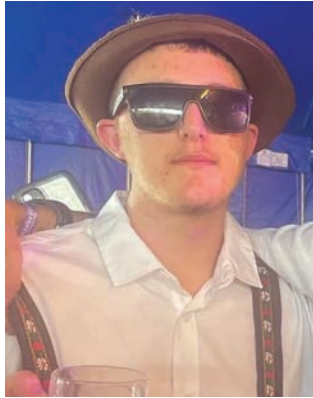
Favourite holiday destination: Okavango Swamps - Botswana.

Kaden St Quintin

What was your first job: Kmart.

What is your role at Brooks Airways: Apprentice Engineer.

What achievement in life are you most proud of: Starting this job.



How would you describe yourself in 3 words:
Pretty easy going.

Where would we find you on the weekends: Northbridge.

What is something that you're really good at: Basketball.

What is something that you're really bad at: Waking up early.

If you could invite anybody to dinner (dead or alive), who would it be: Elon Musk.

Favourite Cake: Cheesecake.

Favourite song: 'No Role Modelz' by J Cole.

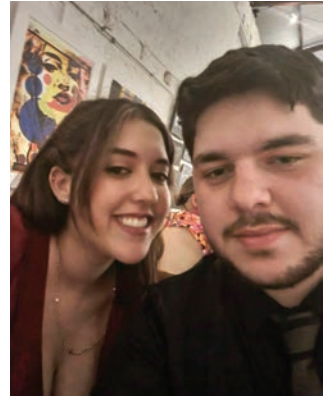
Favourite holiday destination: Japan.

Lucas Hermans

What was your first job:
Installer at Nu-Style Shutters.

What is your role at Brooks Airways: Apprentice Engineer.

What achievement in life are you most proud of:
Owning a 1973 Triumph.



How would you describe yourself in 3 words:
Quiet, Honest, Understanding.

Where would we find you on the weekends: Working on my cars, helping out my family, and spending time with my partner.

What is something that you're really good at:
Problem solving.

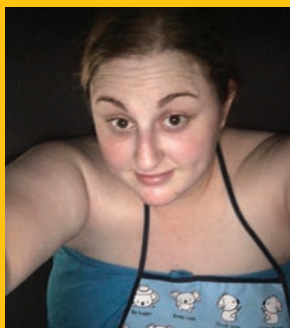
What is something that you're really bad at: ?

If you could invite anybody to dinner (dead or alive), who would it be: Keanu Reeves.

Favourite Cake: Cheesecake.

Favourite song: 'Let It Happen' by Tame Impala.

Favourite holiday destination: ?



'Candis' Kitchen

'Candis' Creation' Warm Salad

She's not just our Purchase Order Officer, Candis is also a certified cook! This edition, we let Candis loose in Vinny's Kitchen and she's whipped up a tasty warm salad - perfect for a summertime barbie .



Ingredients:

3 chorizo sausages
300gm bag of baby spinach leaves
2 punnets of cherry tomatoes
80gm pine nuts
1 bottle of ranch dressing
salt and pepper to taste

Method:

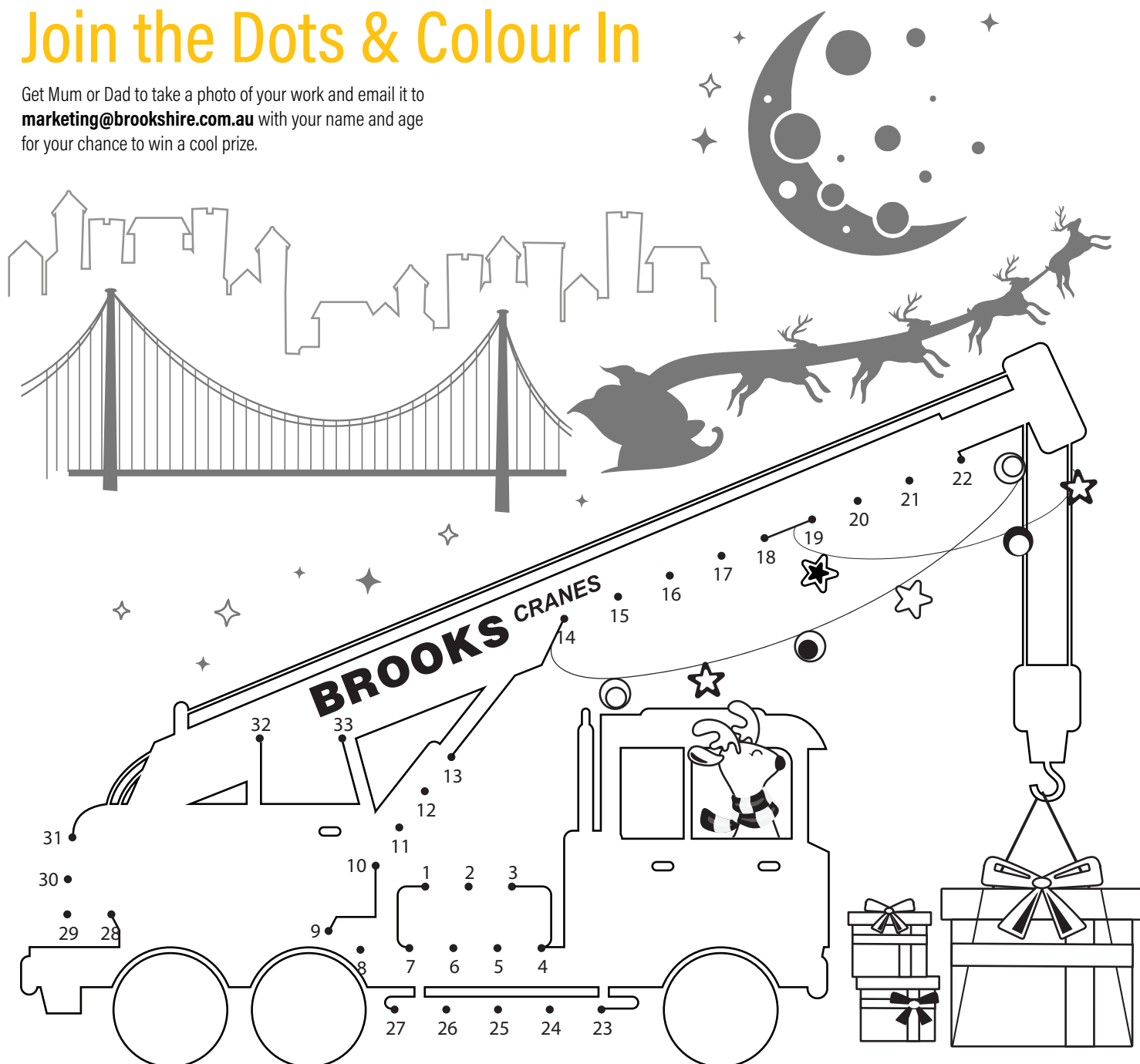
1. Wash and dry spinach, then add to large salad bowl.
2. Quarter cut the chorizo sausages and place in a frypan on low to medium heat (no oil required).
3. Wash and halve the cherry tomatoes, then add to the bowl with spinach. Season with salt and pepper.

4. Stir chorizo for 3-5 minutes until browned. Use tongs to place chorizo in a small bowl, saving the oil in the pan. Cover chorizo with paper towel to remove any excess oil, then set aside.
5. Return pan to a low heat and add pine nuts. Stir pine nuts until lightly browned, then add to the salad bowl.
6. Add the chorizo to the salad bowl and stir through desired amount of ranch dressing. Enjoy!

Kid's Corner

Join the Dots & Colour In

Get Mum or Dad to take a photo of your work and email it to marketing@brookshire.com.au with your name and age for your chance to win a cool prize.



Congratulations to all of the winners from our last edition. You will all be receiving a prize in the post.



Rose Ballancin - Age 5



Dylan Rorbach - Age 6



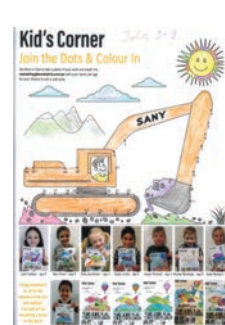
Chloe Rennie - Age 6



Cooper Rorbach - Age 5

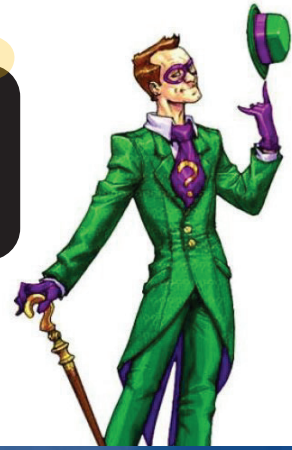


Kimberley Barnes - Age 26



Julia Supranovich - Age 39

The Puzzler Page



Spot the Difference

There are 10 differences between the photos below. See if you can find them all.



Word Solver

Find the 9 letter word using the letters in the grid, then try to make as many other words as you can. Words must be a minimum of 4 letters and must contain the middle letter. No proper nouns or plurals.
Good - 15 Words **Very Good** - 20 Words **Excellent** - 25 or more

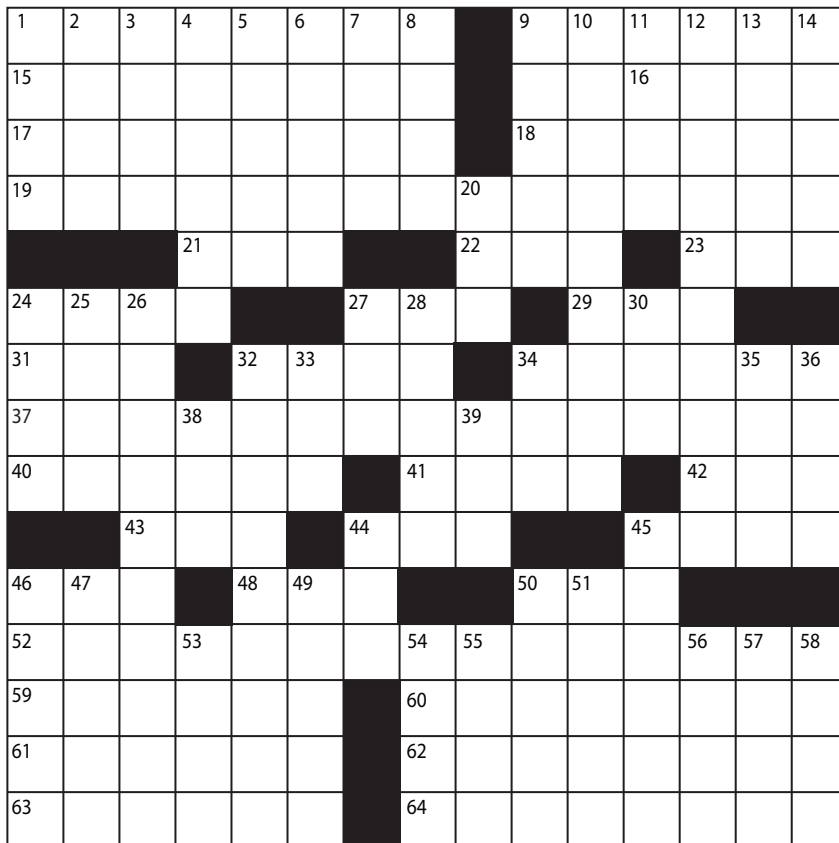
| | | |
|---|---|---|
| U | N | R |
| S | O | T |
| T | C | C |

| | | | | |
|--|--|--|--|--|
| | | | | |
| | | | | |
| | | | | |
| | | | | |
| | | | | |
| | | | | |
| | | | | |
| | | | | |
| | | | | |
| | | | | |

Crossword

Across

1. Demonstration signs
9. Baker et al.
15. Back out of
16. Modern-day whiz
17. China is part of it
18. Holt's sleuthing partner, in '80s TV
19. Number?
21. Cartoon canine
22. Caesar's end?
23. Distressed cries
24. Résumé, briefly
27. Address abbr.
29. James's "Westworld" costar
31. Sportscaster Cross
32. Vasco da ____
34. Pan and friends
37. Number?
40. Preceders of blessings
41. Flame, maybe
42. Alphabetical run
43. Singer Green and others
44. Plant
45. Commodity first registered on Syros in 1898
46. Novelist Rand
48. Ed. offerer
50. ____ polloi
52. Number?
59. Split
60. Introduce
61. Not yet familiar
62. Play break
63. Modeling pros
64. City near Liverpool

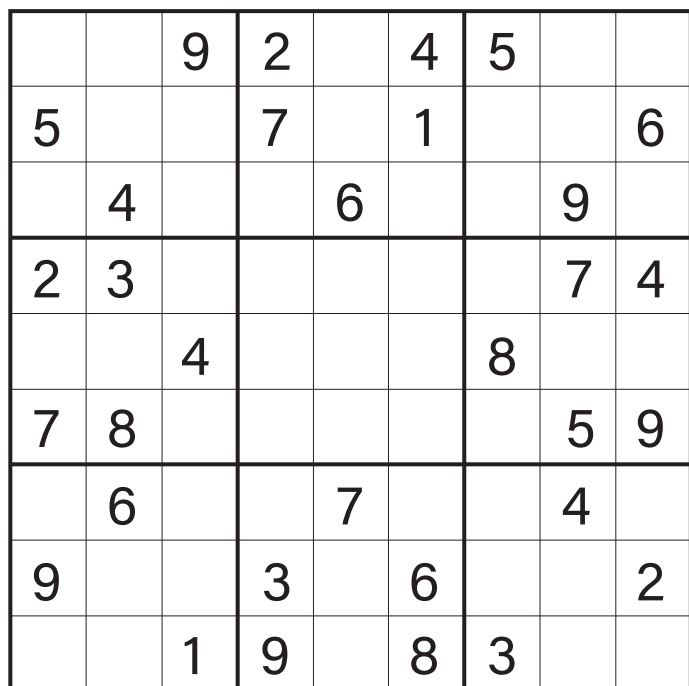


Down

1. Kind of stock: Abbr.
2. "I am a very foolish fond old man" speaker
3. "As I Lay Dying" father
4. Others, to Ovid
5. Focused
6. Amber, for one
7. Ice
8. Fabric flaw
9. Lost
10. Loser to Israel's Barak in 1999
11. "Law & Order: SVU" actor
12. Vatican City administrator
13. 1976 Spingarn Medal recipient
14. Farsighted ones
20. Minute
24. '80s "This Old House" host
25. ____-Z: Camaro model
26. Surfing choices
27. LBJ follower
28. Karate derivative
30. Colorado native
32. Treat superficially
32. Treat superficially
33. Small cells
34. Place to board: Abbr.
35. Result of a quarrel, perhaps
36. Quite a tale
38. MSN competitor
39. Darn
44. Retiring
45. Of a son or daughter
46. Org. with the magazine Playback
47. Mello ____
49. Some racing teams
50. Moor
51. Sequence: Fr.
53. All there
54. Pamplona shouts
55. Outlet
56. Way back when
57. Envelope abbr.
58. Completes

Sudoku

Enter numbers into the blank spaces so that each row, column and 3x3 box contains the numbers 1 to 9 without repeats.



Brain Teasers

A doctor and a bus driver are both in love with the same woman, an attractive girl named Sarah. The bus driver had to go on a long bus trip that would last a week. Before he left, he gave Sarah seven apples. Why?



The more you take, the more you leave behind. What am I?



You live in a one story house made entirely of redwood. What color would the stairs be?



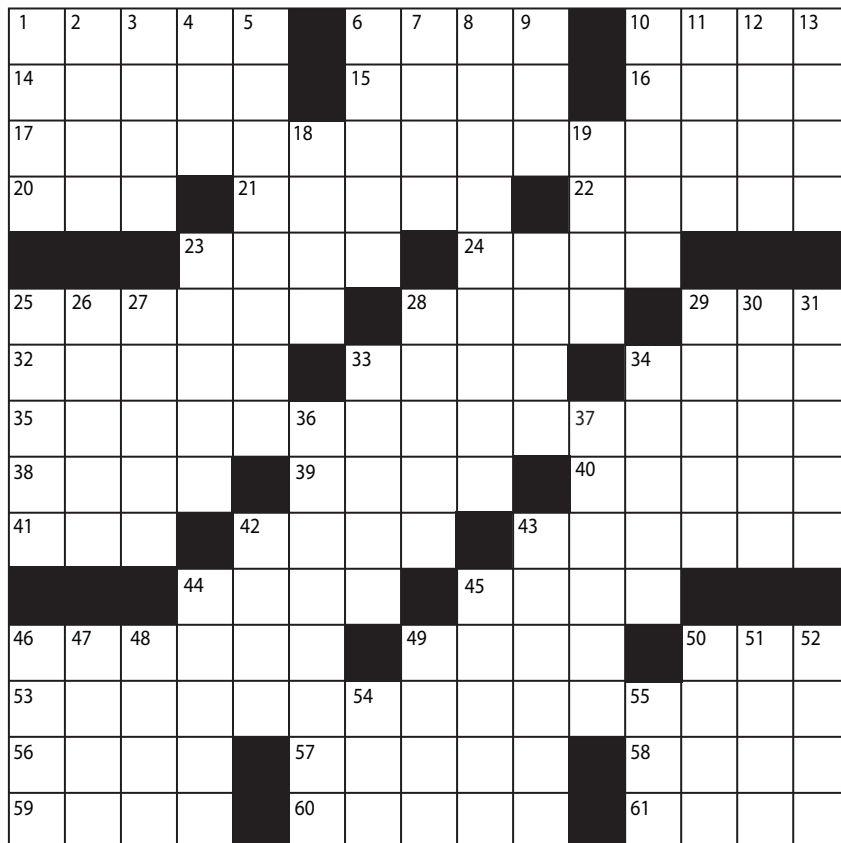
What 8 letter word can have a letter taken away and it still makes a word. Take another letter away and it still makes a word. Keep on doing that until you have one letter left. What is the word?

Crossword

EXTRA

Across

1. Book of memories
6. Strip of concrete
10. Played the pigeon
14. Light wood
15. One-time Italian coin
16. It's entered in court
17. Life, for one
20. Swerve off course
21. It's right on your map
22. Genuflects
23. St. Louis landmark
24. ___ gin fizz
25. Preacher's podium
28. Gunpowder & Twinings
29. Understood, as a punch line
32. Sarah's son
33. Throws chips in
34. Steady stare
35. Certain soup carrier
38. Crater, for one
39. "A Lamp ____ My Feet"
40. House coat?
41. Scheming
42. Increase by
43. "Windmills of the Gods" author Sheldon
44. .001 inch lengths
45. Statistics calculation
46. The "se" in per se
49. Hospital staffer
50. Seek to learn
53. Night on the town, perhaps
56. "National Velvet" author Bagnold
57. Granola ingredients
58. Off-white
59. Easily duped sorts
60. Steed's pace
61. Some candy shapes



Down

1. Advice icon
2. "Doctor Zhivago" heroine
3. Squandered, as a lead
4. NAFTA ratifier
5. Earn tons of money for
6. Cut, as prices
7. Tip, nautically
8. Earth's core?
9. Strong reaction
10. Shopaholic's activity
11. Nautical word
12. Best Actress of 1963
13. Guys' quests
18. It's true
19. Genesis name
23. Speedily
24. Heated argument
25. Rx supply
26. Run-of-the-mill
27. Gangling
28. Tutorial tomes
29. Urchin
30. Fragile layer
31. Easily irked
33. Year-end reward, maybe
34. Test result?
36. Like Jeremiah of song
37. Rampant
42. Huge amount
43. Scotch mixer
44. Patches up
45. Central part
46. Bad time for Caesar
47. Tuneful Turner
48. Cutting sound
49. Debate side
50. Company with a "calling" calling
51. Puppy's papa
52. Esc, alt, etc.
54. Motorists' org.
55. Female gametes

Spot the Difference

There are 10 differences between the photos below. See if you can find them all.



WINNER
Francisco Lagos - Sydney NSW



Snap That

STAFF PHOTOGRAPHY COMPETITION

Claire Harrison
Perth WA



Jack Dell - Dalby QLD



Lee Van Bizen
Perth WA



Adam Weeks & Ben Laidlaw
Brisbane QLD



Reece Weadley
Perth WA



Stuart Harfield
Perth WA



Equipment Hire List



Front End Loaders

| CATEGORY | MAKE | MODEL | ENGINE | WEIGHT |
|---------------------------------------|-------------|-------|-----------------------------|-----------|
| 1.5m ³ | Komatsu | WA150 | 74 kW 99 HP @ 2000 rpm | 7.5 Tonne |
| 2.1m ³ | Caterpillar | 930K | 110 kW @ 1600 rpm | 13 Tonne |
| 2.5m ³ | Komatsu | WA250 | 124 kW 166 HP @ 2000 rpm | 14 Tonne |
| 3.1m ³ | Komatsu | WA320 | 124 kW 166 HP @ 2000 rpm | 14 Tonne |
| 3.5m ³ | Komatsu | WA380 | 140 kW 187 HP @ 2000 rpm | 16 Tonne |
| 3.75m ³ - 4m ³ | Komatsu | WA430 | 173 kW / 232 HP @ 2.100 rpm | 18 Tonne |
| 3.4m ³ | Caterpillar | 950M | 187 kW 250 HP | 20 Tonne |
| 3.6m ³ | Caterpillar | 962M | 185 kW 248 HP | 20 Tonne |
| 4m ³ - 5m ³ | Komatsu | WA470 | 204 kW / 274 HP @ 2.000 rpm | 23 Tonne |
| 5m ³ | Komatsu | WA480 | 223 kW / 299 HP | 25 Tonne |
| 4m ³ - 5m ³ | Volvo | L150G | 210 kW / 1400 rpm | 25 Tonne |
| 4.7m ³ - 6.4m ³ | Komatsu | WA500 | 266 kW / 357 HP @ 1900 rpm | 32 Tonne |
| 5.6m ³ | Caterpillar | 980M | 278 kW | 30 Tonne |
| 5.6m ³ | Caterpillar | 982M | 278 kW @ 1800 rpm | 35 Tonne |
| 5.6m ³ | Hitachi | ZW370 | 289kW @ 1800 rpm | 35 Tonne |
| 6.4m ³ | Caterpillar | 988K | 403 kW | 51 Tonne |
| 6.4m ³ | Komatsu | WA600 | 395 kW / 529 HP @ 1800 rpm | 55 Tonne |
| 7m ³ | Volvo | L260H | 309 kW / 420 HP | 34 Tonne |
| 13m ³ | Komatsu | WA900 | 638 kW / 856 HP | 107 Tonne |



Tool Carriers

| CATEGORY | MAKE | MODEL | ENGINE | WEIGHT |
|---------------------------------------|---------|-----------|--------------------------|------------|
| 2.2m ³ - 2.3m ³ | Komatsu | WA250PT | 104 kW 140 HP / 2000 rpm | 10 Tonne |
| 2.2m ³ - 2.3m ³ | Komatsu | WA250PZ | 103 kW 138 HP @ 2000 rpm | 12 Tonne |
| 1.9m ³ - 2.7m ³ | Komatsu | WA270 | 111 kW 149 HP @ 2000 rpm | 13 Tonne |
| 2.5m ³ - 2.7m ³ | Komatsu | WA320-8 | 123 kW/165 HP @ 2100 rpm | 15 Tonne |
| 2.5m ³ - 2.7m ³ | Komatsu | WA320PZ-6 | 125 kW / 167 HP | 15 Tonne |
| 2.5m ³ - 2.7m ³ | Volvo | L90F | 129 kW @ 1700 rpm | 16 Tonne |
| 3m ³ | Volvo | L110F | 170 kW @ 1700 rpm | 19 Tonne |
| 3.1m ³ | Hitachi | ZW180-5 | 126 kW @ 1500 rpm | 14.5 Tonne |
| 3.5m ³ | Volvo | L120F | 180 kW @ 1700 rpm | 20 Tonne |
| 4.2m ³ | Volvo | L150F | 209 kW @ 1400 rpm | 23 Tonne |
| 4.4m ³ | Volvo | L180F | 234 kW @ 1400 rpm | 26.6 Tonne |
| 5.2m ³ | Volvo | L220H | 279 kW 379 HP @ 1400 rpm | 32.8 Tonne |



Excavators

| CATEGORY | MAKE | MODEL | ENGINE | BUCKET CAPACITY |
|---------------------|-------------|-------------|-------------------------------|---------------------|
| 1.5 Tonne | Komatsu | PC14R | 11,6 kW / 15,6 HP @ 2.600 rpm | 0.03m ³ |
| 1.75 Tonne | Sany | SY16C | 14.6 kW @ 2400 rpm | 0.04m ³ |
| 1.8 Tonne | Caterpillar | 301.8 | 16.1kW / 19.2 HP @ 2,400 rpm | 0.033m ³ |
| 1.85 Tonne | Sany | SY18C | 14.6 kW @ 2400 rpm | 0.04m ³ |
| 2.26 Tonne | Caterpillar | 302 | 15.7kW / 21 HP @ 2,400 rpm | 0.054m ³ |
| 2.76 Tonne | Sany | SY26U | 14.6 kW @ 2400 rpm | 0.06m ³ |
| 3 Tonne | Komatsu | PC30MR | 22,0 kW / 29,5 HP @ 2.400 rpm | 0.09m ³ |
| 3 Tonne | Hitachi | ZX33 | 21.2 kW (28.4 HP) | 0.09m ³ |
| 3.85 Tonne | Sany | SY35U | 18.2 kW @ 2400 rpm | 0.12m ³ |
| 5 Tonne | Komatsu | PC55MR | 29.1 kW 39 HP/2400 rpm | 0.15m ³ |
| 5 Tonne | Komatsu | PC45MR | 29.1 kW 39 HP/2400 rpm | 0.15m ³ |
| 5 Tonne | Komatsu | PC40MR | 29.4 kW 39.4 HP/2350 rpm | 0.15m ³ |
| 5.3 Tonne | Sany | SY50U | 29.1 kW @ 2400 rpm | 0.15m ³ |
| 6.1 Tonne | Sany | SY60C | 42.4 kW / 56.9 HP | 0.21m ³ |
| 7.28 Tonne | Sany | SY75C | 43 kW / 57.7 HP | 0.28m ³ |
| 8 Tonne | Komatsu | PC78MR | 40,5 kW / 54 HP @ 1.850 rpm | 0.28m ³ |
| 8.5 Tonne | Komatsu | PC88MR | 50.7 kW 68 HP @ 1950 rpm | 0.34m ³ |
| 8.8 Tonne | Sany | SY80U | 53.7 kW @ 2100 rpm | 0.28m ³ |
| 9 Tonne | Caterpillar | 308CR | 52.4kW / 70.3 HP @ 2,200 rpm | 0.23m ³ |
| 9.1 Tonne | Sany | SY95C | 53.7 kw / 72 HP | 0.4m ³ |
| 14 Tonne | Komatsu | PC138US | 72.1 kW / 96.6 HP @ 2200 rpm | 0.53m ³ |
| 14 Tonne | Komatsu | PC160LC | 90 kW / 121 HP @ 2200 rpm | 0.6m ³ |
| 14 Tonne | Hyundai | RI40LC | 84 kW / 113 HP @ 2,100 rpm | 0.6m ³ |
| 15.1 Tonne | Sany | SY135C | 78.5 kW @ 2000 rpm | 0.6m ³ |
| 16 Tonne | Sany | SY155U | 78.5 kw @ 1900 rpm | 0.06m ³ |
| 16 Tonne | Hitachi | ZX160LC | 90.2 kW / 122 HP @ 2,200 rpm | 0.73m ³ |
| 22 Tonne Zero Swing | Komatsu | PC228US | 116 kW 155 HP @ 2000 rpm | 1.0m ³ |
| 22 Tonne | Caterpillar | 320GC | 107 kW (143 hp) | 1.0m ³ |
| 22 Tonne | Caterpillar | 320DL | 103 kW / 140 HP @ 1800 rpm | 1.3m ³ |
| 22 Tonne | Hitachi | ZX210H | 122 kW (164 HP) | 1.00m ³ |
| 22 Tonne | Komatsu | PC200LC | 110 kW 147 HP / 2000 rpm | 1.2m ³ |
| 22 Tonne | Komatsu | PC210LCi | 118 kW / 158 HP @ 2000 rpm | 0.97m ³ |
| 22 Tonne | Komatsu | PC210LC | 116 kW / 156 HP @ 2000 rpm | 1.68m ³ |
| 22 Tonne | Komatsu | HB215LC | 110 kW / 148 HP @ 2000 rpm | 1.36m ³ |
| 22.6 Tonne | Sany | SY215C | 122 kw @ 2300 rpm | 0.93m ³ |
| 23 Tonne | Komatsu | PC220LC | 110 kW 147 HP / 2000 rpm | 1.26m ³ |
| 23 Tonne | Hitachi | ZX225USLC | 159 hp (118 kW) @ 2,000 rpm | 1.09m ³ |
| 30 Tonne | Volvo | EC290CLC | 153 kW (205 hp) | 1.2m ³ |
| 30 Tonne | Komatsu | PC270LC | 149 kW 200 HP / 2050 rpm | 1.25m ³ |
| 31.5 Tonne | Sany | SY305H | 212 kW @ 2000rpm | 1.7m ³ |
| 33 Tonne | Hitachi | ZX330 | 247 HP (180 kW) | 1.4m ³ |
| 33 Tonne | Hitachi | ZX350H | 184 kW (246 HP) | 2.00m ³ |
| 34 Tonne | Komatsu | PC300LC | 194 kW 260 HP / 1950 rpm | 1.8m ³ |
| 35 Tonne | Hitachi | ZX350LC | 202 kW / 271 HP | 2.1m ³ |
| 36 Tonne | Komatsu | PC360LCi | 192 kW / 257 HP @ 1950 rpm | 1.96m ³ |
| 36 Tonne | Komatsu | PC350LC | 194 kW / 260 HP @ 1950 rpm | 2.66m ³ |
| 36.7 Tonne | Sany | SY365H | 205 kW / 275 HP | 1.5m ³ |
| 37 Tonne | Caterpillar | 336 | 232 kW | 2.27m ³ |
| 45 Tonne | Komatsu | PC450LC | 270 kW / 362 HP @ 1900 rpm | 2.8m ³ |
| 54.5 Tonne | Sany | SY500H | 298 kW / 399.6 HP | 2.2m ³ |
| 60 Tonne | Komatsu | PC600LC | 288 kW 386 HP @ 1800 rpm | 3.81m ³ |
| 76.2 Tonne | Sany | SY750H | 377 kW @ 1800 rpm | 4.2m ³ |
| 78.6 Tonne | Sany | SY870H | 377 kW @ 1800 rpm | 5.0m ³ |
| 80 Tonne | Komatsu | PC850-8EOSE | 370 kW 496 HP / 1800 rpm | 4.3m ³ |
| 85 Tonne | Komatsu | PC800LC | 363 kW 487 HP @ 1800 rpm | 4.5m ³ |
| 125 Tonne | Sany | SY1250H | 567 kW @ 1800 rpm | 7m ³ |



Rollers

| CATEGORY | WEIGHT | MAKE | MODEL |
|-------------|-------------|-------------|-------------|
| Smooth Drum | 7 Tonne | Bomag | BW177DH |
| Smooth Drum | 11 Tonne | Dynapac | CA252D |
| Smooth Drum | 11 Tonne | Bomag | BW212D |
| Smooth Drum | 12 Tonne | Hamm | 3412 HT V10 |
| Smooth Drum | 12 Tonne | Caterpillar | CS64B |
| Smooth Drum | 12 Tonne | Bomag | BW213D |
| Smooth Drum | 12.5 Tonne | Caterpillar | CS56B |
| Smooth Drum | 12.7 Tonne | Dynapac | CA302D |
| Smooth Drum | 13.2 Tonne | Dynapac | CA362D |
| Smooth Drum | 12.6 Tonne | Bomag | BW213D |
| Smooth Drum | 15.7 Tonne | Hamm | 3516 |
| Smooth Drum | 16 Tonne | Caterpillar | CS74B |
| Smooth Drum | 16 Tonne | Caterpillar | CP76B |
| Smooth Drum | 16.1 Tonne | Bomag | BW216D |
| Smooth Drum | 17.89 Tonne | Hamm | 3518 |
| Smooth Drum | 18.7 Tonne | Caterpillar | CS78B |
| Smooth Drum | 19.3 Tonne | Dynapac | CA6000D |
| Smooth Drum | 19.8 Tonne | Hamm | 3520 |
| Smooth Drum | 20 Tonne | Caterpillar | CS79B |
| Padfoot | 12 Tonne | Caterpillar | CS12 GC |
| Padfoot | 12 Tonne | Caterpillar | CS56B |
| Padfoot | 12 Tonne | Bomag | BW211D |
| Padfoot | 12.6 Tonne | Bomag | BW213D |
| Padfoot | 13.2 Tonne | Dynapac | CA362D |
| Padfoot | 15.7 Tonne | Hamm | 3516P |
| Padfoot | 16.1 Tonne | Bomag | BW216PD |
| Padfoot | 17.6 Tonne | Caterpillar | CP76B |
| Padfoot | 17.89 Tonne | Hamm | 3518P |
| Padfoot | 18 Tonne | Dynapac | CA6000PD |
| Padfoot | 18.6 Tonne | Dynapac | CA602PD |
| Padfoot | 19.4 Tonne | Bomag | BW219PD |
| Padfoot | 19.8 Tonne | Hamm | 3520P |
| Multi Tyre | 18 Tonne | Hamm | HP280 |
| Multi Tyre | 18 Tonne | Caterpillar | CW34 |
| Multi Tyre | 18.3 Tonne | Hamm | GRW280 |
| Multi Tyre | 20 Tonne | Ammann | AP240 |
| Multi Tyre | 20 Tonne | Bomag | BW24RH |

| CATEGORY | WEIGHT | MAKE | MODEL |
|---------------|-----------|-----------------|---------|
| Multi Tyre | 20 Tonne | Bomag | BW25RH |
| Multi Tyre | 24 Tonne | Caterpillar | CW34LRC |
| Double Drum | 2.6 Tonne | Hamm | HD12VV |
| Double Drum | 2.8 Tonne | Bomag | BW120AD |
| 3 Pin Static | 14 Tonne | Aveling Barford | DC014 |
| Trench Roller | 1,675 Kg | Husqvarna | LP9505 |



Compactors & Tamers

| CATEGORY | WEIGHT | MAKE | MODEL |
|------------------|--------|-----------|------------|
| Tampers | 98kg | Husqvarna | LT800 |
| Plate Compactors | 185kg | Husqvarna | LG164 |
| Plate Compactors | 244kg | Husqvarna | LG204 |
| Plate Compactors | 302kg | Husqvarna | LG300 |
| Plate Compactors | 436kg | Husqvarna | LG400 |
| Plate Compactors | 500kg | Bomag | BPR 70/70D |
| Plate Compactors | 500kg | Dynapac | LG500 |
| Plate Compactors | 750kg | Bomag | BPR 100/80 |
| Plate Compactors | 750kg | Dynapac | LH700 |
| Plate Compactors | 800kg | Husqvarna | LH804 |



Compressors

| TYPE | AIR FLOW | DRY WEIGHT | PRESSURE |
|---------|-----------|------------|----------|
| Trailer | 176.5 cfm | 800 kg | 7 bar |
| Skid | 185 cfm | 950 kg | 7 bar |
| Trailer | 251 cfm | 1400 kg | 7 bar |
| Skid | 400 cfm | 1920 kg | 10 bar |
| Trailer | 423 cfm | 2000 kg | 7 bar |
| Trailer | 530 cfm | 2600 kg | 10 bar |
| Trailer | 893 cfm | 3700 kg | 8 bar |
| Trailer | 938 cfm | 5300 kg | 12 bar |
| Trailer | 1020 cfm | 5300 kg | 10.3 bar |
| Trailer | 1102 cfm | 5300 kg | 8.6 bar |



Graders

| CATEGORY | MAKE | MODEL | WEIGHT |
|------------------|-------------|----------|------------|
| 12' Motor Grader | Caterpillar | 120M | 14.5 Tonne |
| 12' Motor Grader | Komatsu | GD555 | 8 Tonne |
| 14' Motor Grader | Caterpillar | 140M | 18.4 Tonne |
| 14' Motor Grader | Caterpillar | 140M AWD | 18.4 Tonne |
| 14' Motor Grader | Caterpillar | 140H | 18.4 Tonne |
| 14' Motor Grader | Caterpillar | 140G | 18.4 Tonne |
| 14' Motor Grader | Caterpillar | 150 AWD | 19.8 Tonne |
| 14' Motor Grader | Komatsu | GD655 | 18.5 Tonne |
| 14' Motor Grader | John Deere | 770G | 19.3 Tonne |
| 14' Motor Grader | John Deere | 672G | 20 Tonne |
| 14' Motor Grader | John Deere | 772GP | 20.5 Tonne |
| 16' Motor Grader | John Deere | 872GP | 21.6 Tonne |
| 16' Motor Grader | Caterpillar | 16MQLR | 30 Tonne |
| 24' Motor Grader | Caterpillar | 24 | 73 Tonne |



Dozers

| CATEGORY | MAKE | MODEL | BLADE WIDTH |
|------------|-------------|---------|-------------|
| 17.3 Tonne | Caterpillar | D6N | 4080mm |
| 17.7 Tonne | Caterpillar | D6H | 4486mm |
| 21 Tonne | Caterpillar | D6T XL | 3693mm |
| 21 Tonne | Caterpillar | D6T LGP | 3693mm |
| 27 Tonne | Caterpillar | D7 | 3988mm |
| 39.4 Tonne | Caterpillar | D8 | 5045mm |
| 70 Tonne | Caterpillar | D10T | 7416mm |



Dump Trucks

| CATEGORY | PAYLOAD | MAKE | MODEL |
|-------------|----------|-------------|--------|
| Articulated | 30 Tonne | Komatsu | HM300 |
| Articulated | 37 Tonne | Hitachi | AH400D |
| Articulated | 40 Tonne | Komatsu | HM400 |
| Articulated | 41 Tonne | Caterpillar | 745 |



Site Dumpers

| CATEGORY | PAYLOAD | MAKE | MODEL |
|--------------|---------|---------------|-----------|
| Side Tipper | 9 Tonne | Wacker Neuson | DV90 |
| Front Tipper | 9 Tonne | Thwaites | 9T Dumper |



Water Trucks

| CATEGORY | CAPACITY | MAKE | MODEL |
|-------------|----------|---------------|-------------------|
| Rigid | 14,000 L | Isuzu | FVZ 260-300 |
| Rigid | 14,000 L | Hino | 500 |
| Rigid | 15,000 L | Isuzu | FVZ 260-300 |
| Rigid | 15,000 L | Hino | 500 |
| Rigid | 15,000 L | Mercedes Benz | Axor |
| Rigid | 20,000 L | Isuzu | FYH 2000 8x4 |
| Rigid | 20,000 L | Iveco | Trakker AD450 6x6 |
| Articulated | 16,000 L | JCB | Fastrac 185/65 |
| Articulated | 16,000 L | Chamberlain | C6100 |
| Articulated | 16,000 L | Mercedes Benz | MB Trac |
| Articulated | 26,000 L | Komatsu | HM300 |
| Articulated | 35,000 L | Komatsu | HM400 |



Service, Fuel & Tipper Trucks

| CATEGORY | CAPACITY | MAKE | MODEL |
|---------------|----------------|---------------|---------------|
| Service Truck | 8 Compartments | Isuzu | FVZ 260 - 300 |
| Service Truck | 8 Compartments | Hino | 500 |
| Fuel Trailer | 1,400 L | - | - |
| Fuel Trailer | 2,000 L | - | - |
| Fuel Truck | 14,000 L | Hino | 500 |
| Tipper Truck | 11m³ | Isuzu | FVZ 260-300 |
| Tipper Truck | 11m³ | Hino | 500 |
| Tipper Truck | 11m³ | Isuzu | FVZ 1400 |
| Side Tipper | 21m³ | Howard Porter | - |
| Side Tipper | 24m³ | Road West | - |



Backhoes

| DIG DEPTH | MAKE | MODEL | WEIGHT |
|-----------|-------------|-----------|-------------|
| 4.32m | JCB | 4CX | 8.178 Tonne |
| 4.8m | Komatsu | WB97R-5E0 | 7.6 Tonne |
| 4.883m | Caterpillar | 432E | 9.1 Tonne |
| 6.14m | JCB | 5CX | 10.6 Tonne |



Skid Steer Loaders

| CATEGORY | MAKE | MODEL | TIPPING LOAD (35%) |
|----------|-------------|---------|--------------------|
| Tracked | Bobcat | T140SJC | 635kg |
| Tracked | Caterpillar | 239D | 695kg |
| Tracked | Caterpillar | 249D | 790kg |
| Tracked | Caterpillar | 259D | 915 kg |
| Wheeled | Komatsu | SK714 | 650kg |
| Wheeled | Caterpillar | 226B | 680kg |
| Wheeled | Caterpillar | 246C | 975kg |



Telehandlers

| LIFTING WEIGHT | MAKE | MODEL | LIFTING HEIGHT |
|----------------|---------|------------|----------------|
| 3 Tonne | JCB | 531-70 | 7000mm |
| 3.2 Tonne | Manitou | MT732 | 6900mm |
| 3.5 Tonne | JCB | 535-95 | 9500mm |
| 4 Tonne | JCB | 541-70 | 7000mm |
| 4 Tonne | Merlo | TF42.7-100 | 9500mm |
| 4 Tonne | Manitou | MT-X 1440 | 13530mm |
| 4 Tonne | Manitou | MT-X 1840 | 17550mm |
| 6 Tonne | Merlo | P60.10EE | 9550mm |



Forklifts

| LIFTING HEIGHT | MAKE | MODEL | LOAD CAPACITY |
|----------------|--------|----------|---------------|
| 3000 mm | Hyster | H4.0FT | 4 Tonne |
| 4000 mm | Hyster | H5.0FT | 5 Tonne |
| 5336 mm | Hyster | H8.00XM | 8 Tonne |
| 6200 mm | Hyster | H16.00XM | 16 Tonne |



Cranes

| MAKE | MODEL | WEIGHT | MAXIMUM BOOM LENGTH |
|--------|--------|-----------|---------------------|
| Franna | MAC 25 | 25 tonnes | 18.4m |



Articulated Boom Lifts

| HEIGHT | MAKE | MODEL | CATEGORY |
|--------|----------|---------------|---------------|
| 34 ft | JLG | H340AJ | Hybrid |
| 34 ft | Genie | Z34 / 22 N | Electric |
| 45 ft | JLG | 450AJ | Diesel |
| 45 ft | Genie | Z-45 XC | Rough Terrain |
| 51 ft | Genie | Z-51 / 30J RT | Rough Terrain |
| 62 ft | Genie | Z-62 / 40 | Rough Terrain |
| 80 ft | JLG | H800AJ | Hybrid |
| 80 ft | JLG | 800 AJ | Diesel |
| 80 ft | Haulotte | HA26 RTJ PRO | Diesel |
| 80 ft | Genie | Z-80 / 60 | Rough Terrain |
| 125 ft | JLG | 1250AJP | Diesel |
| 135 ft | Genie | ZX-135 / 70 | Rough Terrain |



Scissor Lifts

| HEIGHT | MAKE | MODEL | CATEGORY |
|--------|---------|------------|---------------|
| 19 ft | JLG | ES1932 | Electric |
| 19 ft | JLG | R1932 | Electric |
| 26 ft | JLG | R2632 | Electric |
| 26 ft | Genie | GS-2632 | Electric |
| 26 ft | Genie | GS2669 RT | Rough Terrain |
| 32 ft | JLG | ES 3246 | Electric |
| 32 ft | JLG | R 3246 | Electric |
| 33 ft | Genie | GS 3369 RT | Rough Terrain |
| 33 ft | Genie | GS 3384 | Rough Terrain |
| 33 ft | Snorkel | S3370 RT | Rough Terrain |
| 40 ft | JLG | R 4045 | Electric |
| 40 ft | Genie | GS-4069 RT | Rough Terrain |
| 43 ft | Genie | GS-4390 | Rough Terrain |
| 46 ft | Genie | GS-4655 | Electric |
| 47 ft | JLG | ERT 4769 | Rough Terrain |
| 53 ft | Genie | GS-5390 | Rough Terrain |



Telescopic Boom Lifts

| HEIGHT | MAKE | MODEL | CATEGORY |
|--------|-------|-----------|---------------|
| 45 ft | Genie | S-45 XC | Rough Terrain |
| 65 ft | Genie | S65 XC | Rough Terrain |
| 80 ft | Genie | S-80 XC | Rough Terrain |
| 85 ft | Genie | S-85XC | Rough Terrain |
| 125 ft | Genie | SX-125 XC | Rough Terrain |
| 135 ft | Genie | SX-135 XC | Rough Terrain |
| 150 ft | Genie | SX-150 | Rough Terrain |



Generators

| POWER | OUTPUT | RUN TIME | WEIGHT |
|----------|---------|----------|----------|
| 10 kVA | 8 kW | 35 hours | 700 kg |
| 20 kVA | 16 kW | 18 hours | 726 kg |
| 45 kVA | 36 kW | 12 hours | 1085 kg |
| 60 kVA | 48 kW | 10 hours | 1110 kg |
| 80 kVA | 64 kW | 11 hours | 1403 kg |
| 100 kVA | 80 kW | 14 hours | 1685 kg |
| 150 kVA | 120 kW | 9 hours | 2000 kg |
| 200 kVA | 160 kW | 10 hours | 2440 kg |
| 255 kVA | 204 kW | 9 hours | 2600 kg |
| 300 kVA | 240 kW | 7 hours | 3068 kg |
| 350 kVA | 280 kW | 11 hours | 4439 kg |
| 400 kVA | 320 kW | 9 hours | 4400 kg |
| 450 kVA | 360 kW | 9 hours | 4597 kg |
| 500 kVA | 400 kW | 8 hours | 4800 kg |
| 600 kVA | 480 kW | 11 hours | 5970 kg |
| 670 kVA | 536 kW | 10 hours | 5970 kg |
| 750 kVA | 600 kW | 3 hours | 9200 kg |
| 800 kVA | 640 kW | 3 hours | 10000 kg |
| 910 kVA | 728 kW | 3 hours | 11600 kg |
| 1035 kVA | 828 kW | 2 hours | 11680 kg |
| 1253 kVA | 1002 kW | 2 hours | 14100 kg |
| 1505 kVA | 1204 kW | 2 hours | 14050 kg |
| 1705 kVA | 1364 kW | 1 hours | 15500 kg |
| 2000 kVA | 1600 kW | 1 hours | 16000 kg |

*All Generators under 100 kVA are available on trailers.



Diesel Pumps High head

| INLET SIZE | OUTLET SIZE | Q MAX | MAX HEAD |
|------------|-------------|-----------|----------|
| 100 mm | 75 mm | 40 L/sec | 200 m |
| 100 mm | 80 mm | 42 L/sec | 92 m |
| 150 mm | 75 mm | 50 L/sec | 150 m |
| 150mm | 100 mm | 80 L/sec | 180 m |
| 150 mm | 100 mm | 117 L/sec | 101 m |
| 200 mm | 150 mm | 167 L/sec | 101 m |
| 250 mm | 200 mm | 250 L/sec | 70 m |
| 250 mm | 200 mm | 408 L/sec | 109 m |



Diesel Pumps Surface dewatering

| SIZE | Q MAX | MAX HEAD |
|---|-----------|---------------------------------|
| 80 mm | 45 L/sec | 19 m open and silent option |
| 100 mm | 69 L/sec | 36 m open and silent option |
| 100 mm | 77 L/sec | 50 m open and silent option |
| 150 mm | 150 L/sec | 37 m open and silent option |
| 150 mm | 141 L/sec | 51 m open and silent option |
| All Pumps under 150 mm size are available on trailers | | |
| 200 mm | 175 L/sec | 30 m open and silent option |
| 200 mm | 236 L/sec | 50 m open and silent option |
| 300 mm | 313 L/sec | 29.5 m open and silent option |
| 300 mm | 600 L/sec | 71 m open and silent option |



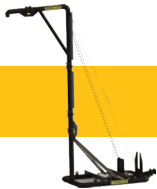
Submersible Pumps

| TYPE POWER | SIZE | Q MAX | MAX HEAD |
|---------------------|--------|-----------|----------|
| Dewatering 1 kW | 50 mm | 10 L/sec | 16 m |
| Dewatering 2 kW | 75 mm | 14 L/sec | 24 m |
| Dewatering 3.4 kW | 75 mm | 23 L/sec | 23 m |
| Dewatering 6.6 kW | 75 mm | 20 L/sec | 38 m |
| Dewatering 8.8 kW | 75 mm | 28 L/sec | 40 m |
| Dewatering 6.6 kW | 100 mm | 37 L/sec | 25 m |
| Dewatering 8.8 kW | 100 mm | 45 L/sec | 30 m |
| Dewatering 14 kW | 100 mm | 20 L/sec | 65 m |
| Dewatering 22 kW | 100 mm | 40 L/sec | 65 m |
| Dewatering 30 kW | 100 mm | 40 L/sec | 86 m |
| Dewatering 22 kW | 150 mm | 95 L/sec | 40 m |
| Sludge 3.7 kW | 75 mm | 20 L/sec | 13 m |
| Sludge 9 kW | 100 mm | 28 L/sec | 23 m |
| Sludge 11 kW | 100 mm | 42 L/sec | 24 m |
| Sludge 15 kW | 100 mm | 22 L/sec | 27 m |
| Sludge 37 kW | 100 mm | 80 L/sec | 50 m |
| Sludge 45 kW | 150 mm | 124 L/sec | 30 m |
| Sludge 75 kW | 150 mm | 155 L/sec | 48 m |
| Slurry 3.1 kW | 75 mm | 15 L/sec | 15 m |
| Slurry 5.7 kW | 100 mm | 25 L/sec | 23 m |
| Slurry 8 kW | 100 mm | 28 L/sec | 25 m |



Compressors

| TYPE | AIR FLOW | DRY WEIGHT | PRESSURE |
|---------|-----------|------------|----------|
| Trailer | 127 cfm | 700 kg | 7 bar |
| Trailer | 176.5 cfm | 800 kg | 7 bar |
| Skid | 185 cfm | 950 kg | 7 bar |
| Trailer | 251 cfm | 1400 | |
| Skid | 400 cfm | 1920 kg | 10 bar |
| Trailer | 423 cfm | 2000 kg | 7 bar |
| Trailer | 530 cfm | 2600 kg | 10 bar |
| Trailer | 893 cfm | 3700 kg | 8 bar |
| Trailer | 938 cfm | 5300 kg | 12 bar |
| Trailer | 1020 cfm | 5300 kg | 10.3 bar |
| Trailer | 1102 cfm | 5300 kg | 8.6 bar |



Pump Accessories

Materials and Parts can be supplied at cost price + 20%

DN150 Standpipe | clearance 4.2m

DN150 Standpipe | clearance 4.8m

DN150 Standpipe | clearance 5.2m

DN150 Standpipe | clearance 5.8m

DN150 Standpipe | clearance 6.5m

DN150 Standpipe | clearance 8.6m

DN200 Standpipe | clearance 4.2m

DN200 Standpipe | clearance 4.8m

DN200 Standpipe | clearance 5.2m

DN200 Standpipe | clearance 5.8m

DN200 Standpipe | clearance 6.5m

DN200 Standpipe | clearance 8.6m

Hose & Cable Floats

HDPE pipe

Pontoons

Flow Meters

Suction Hose

Discharge Hose

Remote Monitoring



Portable Buildings

| TYPE | SPECIFICATIONS |
|------------------------------|---|
| Modified Containers | 6.09m & 12.19m options, fully furnished |
| Portable Site Offices | 8.6m x 2.5m x 3.45m, fully furnished |
| Portable Toilets and Showers | |



Lighting Towers diesel & solar

| LAMP POWER | ILLUMINATED AREA | RUNNING TIME |
|-----------------|---|--------------|
| 1800 W | 5000 / 500 m ² | 100 hours |
| 4 x 320 W | 4500 / 4200 m ² | 143 hours |
| 4 x 320 W | 5000 m ² | 218 hours |
| 4 x 350 W | 5000 m ² @ 20 Lux | 220 hours |
| 4 x 350 W | 5.4 lm / m ² @ 28.328 m ² | 150 hours |
| 6 x 350 W | 315,000 | 145 hours |
| 6 solar x 100 W | 65,000 | 56 hours |
| 2 solar x 100 W | 14,000 | 35 hours |



Power Accessories

| TYPE | SIZE | OUTLET |
|--------------------|--------------|---|
| Distribution Board | 32 amp | 8 x 240V 15A 1 x 415V 20A 1 x 415V 32A |
| Distribution Board | 63 amp | 10 x 240V 15A 2 x 415V 20A 2 x 415V 32A |
| Distribution Board | 125 amp | 8 x 240V 15A 2 x 415V 32A |
| Power Cables | 20 amp | cable length can be customised |
| Power Cables | 32 amp | cable length can be customised |
| Power Cables | 63 amp | cable length can be customised |
| Power Cables | 100 amp | cable length can be customised |
| Power Cables | Hardwire | cable length can be customised |
| Load Banks | 100 - 500 kW | in all application |

Control Panels, Soft Starters & Variable Speed Drivers are available



Mobile Fuel Supply

| TYPE | SIZE | COMMENTS |
|-----------------|---------|--|
| Fuel Tank | 1000 L | Double bunded, multiple fuel connections |
| Trailer Mounted | 1000 L | Double bunded, multiple fuel connections |
| Fuel Tank | 2000 L | Double bunded, multiple fuel connections |
| Fuel Tank | 4000 L | Double bunded, multiple fuel connections |
| Fuel Tank | 10000 L | Double bunded, multiple fuel connections |
| Trailer Mounted | 2000 L | Double bunded, multiple fuel connections |

Plant trailers, Tandem trailers, Cage Trailers, Pressure washer trailers & Fire Fighter trailer are also available for hire.



Traffic Lights & Signage

| CATEGORY | POWER SUPPLY |
|------------------------|--------------------------------------|
| Traffic Lights | Nominal 12 Volts. Range 10.8 – 14.2V |
| Variable Message Signs | Nominal 12 Volts. Range 10.8 – 14.2V |



Solar CCTV Towers

| MAKE | CAMERA | HEIGHT |
|----------|--|--------|
| Solareye | 2x4MP acusense deep learning cameras, 50m night vision | 4.5m |



Dust Suppression Fans

| MAKE | MODEL | ELECTRICAL ENGINE POWER |
|---------|-----------|-------------------------|
| Generac | DF 4500 | 4kW |
| Generac | DF 7500 | 7.5kW |
| Generac | DF 15000 | 15kW |
| Generac | DF 20000 | 20kW |
| Generac | DF 50000 | 45kW |
| Generac | DF 110000 | 100kW |



Commercial Vehicles

| SEATS | MAKE | MODEL | CATEGORY |
|-------|--------|--------------|-----------------------------------|
| 12 | Toyota | Hiace | Mine Spec Bus |
| 7 | Toyota | Land Cruiser | Mine Spec 4x4 Wagon |
| 7 | Toyota | Prado | Mine Spec 4x4 Wagon |
| 5 | Toyota | Hilux | Mine Spec 4x4 Dual Cab Ute |
| 5 | Toyota | LC78 DC | Mine Spec 4x4 Dual Cab |
| 2 | Toyota | LC78 SC | Mine Spec 4x4 Single Cab |
| 2 | Toyota | Hilux | Mine Spec 4x4 Single Cab Tray Ute |



Machine Attachments

| CATEGORY | ATTACHMENT | CATEGORY | ATTACHMENT |
|--------------|------------------------|-------------|------------------------|
| Excavator | GP Bucket | Skid Steer | GP Bucket |
| Excavator | Batter Bucket | Skid Steer | Rake Bucket |
| Excavator | Trenching Bucket | Skid Steer | Forks |
| Excavator | Skeleton Bucket | Skid Steer | Bucket Broom |
| Excavator | Sieve Bucket | Skid Steer | Auger |
| Excavator | Screening Bucket | Skid Steer | Trencher |
| Excavator | Trapezoidal Bucket | Skid Steer | Levelling Attachment |
| Excavator | Tilting Bucket | Skid Steer | GPS |
| Excavator | Rock Breaker | | |
| Excavator | Auger | Telehandler | GP Bucket |
| Excavator | Misu Heavy Duty Screen | Telehandler | Batter Bucket |
| Excavator | GP Grapple | Telehandler | Forks |
| Excavator | 360° Grapple | Telehandler | Jib |
| Excavator | Rock Grapple | Telehandler | GPS |
| Excavator | Hydraulic Grapple | | |
| Excavator | Mechanical Grab | Backhoe | GP Bucket |
| Excavator | Hydraulic Grab | Backhoe | Trenching Bucket |
| Excavator | Sleeper Grab | Backhoe | Batter Bucket |
| Excavator | Plate Compactor | Backhoe | Batter Bucket (Digger) |
| Excavator | Compaction Wheel | Backhoe | Auger |
| Excavator | Tree & Stump Mulcher | Backhoe | Forks |
| Excavator | Ripper | Backhoe | GPS |
| Excavator | GPS | | |
| | | Grader | Roller |
| Tool Handler | GP Bucket | Grader | GPS |
| Tool Handler | Rake Bucket | | |
| Tool Handler | Stemming Bucket | Tractor | Grid Roller |
| Tool Handler | Grain Bucket | Tractor | Hydraulic Angle Broom |
| Tool Handler | Forks | | |
| Tool Handler | Jib | | |
| Tool Handler | Log Forks | | |
| Tool Handler | Man Cage | | |
| Tool Handler | Tyre Grab | | |
| Tool Handler | GPS | | |
| | | | |

**SANY**

BIG STOCKTAKE SALE

**ALL 2021 MODELS
MUST GO!**


Be Quick - Limited 2021 Stock Left - Finance Available
COME IN AND MAKE AN OFFER!

**Sany SW405K
Wheel Loader**
OWN IT
from **\$124*** PER DAY

Technical Specifications

Weight: 18.5 tonnes
 Engine: Deutz TCD 7.8
 Lifting Force: 40 kN
 Bucket: 3.0m³
 Power: 262hp/195kW


**Sany SY16C
1.75t Excavator**
OWN IT
from **\$17*** PER DAY

Technical Specifications

Weight: 1.75 tonnes
 Engine: Yanmar 3TNV74F
 Break Out Force: 15.2 kN
 Width: 0.98m
 Bucket: 0.04m³

**Comes with
3 buckets &
a half hitch!**
**Warranty
5 Years or
5000 hrs**

**Sany SY50U
5.3t Excavator**
OWN IT
from **\$39*** PER DAY

Technical Specifications

Weight: 5.3 tonnes
 Engine: Yanmar 4TNV88C-PSY
 Break Out Force: 32.5 kN
 Width: 1.96m
 Bucket: 0.39m³

**Warranty
5 Years or
5000 hrs**

**Sany SY80U
8.8t Excavator**
OWN IT
from **\$56*** PER DAY

Technical Specifications

Weight: 8.8 tonnes
 Engine: Yanmar T4F
 Break Out Force: 72.7 kN
 Width: 2.2m
 Bucket: 0.39m³

**Warranty
5 Years or
5000 hrs**

**Sany SY135C
13.8t Excavator**
OWN IT
from **\$70*** PER DAY

Technical Specifications

Weight: 13.8 tonnes
 Engine: Isuzu AJ-4J1XT3
 Break Out Force: 92.7 kN
 Width: 2.49m
 Bucket: 0.6m³

**Warranty
5 Years or
5000 hrs**

**Sany SY155U
16t Excavator**
OWN IT
from **\$82*** PER DAY

Technical Specifications

Weight: 16 tonnes
 Engine: Isuzu 4J1TX
 Break Out Force: 103 kN
 Width: 2.49m
 Bucket: 0.6m³

**Warranty
5 Years or
5000 hrs**

**Sany SY215C
22t Excavator**
OWN IT
from **\$95*** PER DAY

Technical Specifications

Weight: 22 tonnes
 Break Out Force: 138 kN
 Engine: Mitsubishi 6D34-TL
 Width: 2.98m
 Bucket: 0.93m³

**Warranty
4 Years or
8000 hrs**

**Sany SY365H
36.7t Excavator**
OWN IT
from **\$149*** PER DAY

Technical Specifications

Weight: 36.7 tonnes
 Engine: Isuzu T4
 Break Out Force: 235 kN
 Width: 3.39m
 Bucket: 1.5m³

**Warranty
4 Years or
8000 hrs**

**Sany SY500H
54.5t Excavator**
OWN IT
from **\$224*** PER DAY

Technical Specifications

Weight: 54.5 tonnes
 Engine: Cummins QSG12
 Break Out Force: 275 kN
 Width: 3.64m
 Bucket: 5m³

**Warranty
4 Years or
8000 hrs**


*Finance Terms and Conditions: The repayment estimates are provided by Quokka Finance Pty Ltd. They are for illustrative purposes and do not constitute a quote, loan application, or offer of a Chattel Mortgage, Hire Purchase or Lease Loan. The estimates are based on a Chattel Mortgage term of 60 months with a 30% residual, where the asset is predominately for business purposes and the amounts and rate quoted at the date of enquiry and are subject to change. The estimates do not consider your personal needs and financial circumstances and excludes any fees and charges payable. Actual repayments amounts may vary depending on the interest rate offered and determined by the customer profile at time of application. While every effort has been made to ensure the material contained on this page is factually correct, this figure should not be relied upon. Only available in WA & NT.

Authorised Dealers for


BROOKS
EQUIPMENT


1300 BROOKS (1300 276 657)
 sales@brooksequipment.com.au
 www.brooksequipment.com.au