

YOUR FREE COPY

THE Eneabba

SUMMER 2025 ISSUE 19

The Greatest Show In The World

BAUMA 2024



XCMG

XC9260
电驱装载机
ELECTRIC DRIVE LOADER

产品参数 Product parameter	
额定载重 Rated load	36000kg
铲斗容量 Bucket Capacity	11.5 m³
工作质量 Operating Weight	127000 kg
卸料高度 Dump Height	5225 mm
卸料距离 Dump Reach	2592 mm
轴距 Wheelbase	5900 mm
整机尺寸 Overall Dimensions (L x W x H)	16322 x 3639 x 5930mm

整机采用纯电驱动系统，电驱正反转效率高，制动平顺且无磨损，作业效率提升20%，油耗降低20%。
 大额定行程卸料，单斗提升12%。
 全驱电液制动，制动效率提升18%。
 整机采用全电液驱动系统，配置70-140吨。

4WD 4-wheel independent drive, electric positive flow hydraulic decoupled drive and hydraulic system, 20% more efficiency, 20% less fuel.
 High-ratio planetary drive, Tractor +15%.
 Global Mining Truck Series High-mid open-pit mining, Fits 70-140t trucks.

关键参数 Key Parameters	单位 Unit	XC9260	XC8106	LW12000H	XC9150	XC3350
额定载重 Rated Load	kg	36000/32000	11000	12000	13000	33000

产品参数 Key Parameters	单位 Unit	DL300	DL500	DL300S
铲斗容量 Bucket Capacity	m³	6.88	7.20/6.8	31.6

The story of Eneabba



When 23-year-old Doug Brooks recognised an opportunity to hire out equipment to the WA mining industry in 1979, he knew it was something he had to pursue. Doug scrambled together every dollar he had, to purchase two disassembled compressors, with the remainder of the bill being settled by bankcard. He opened 'Brooks Hire Service' and ran the business from a shed in the remote WA town of Eneabba. All the while, Doug was living in a 'humpy' at the rear of the shed. There were many that warned him of the difficulty of starting a new business in a very competitive industry, but Doug was determined and it was only a matter of time before he was turning a profit on his compressors. What started as two compressors on hire, soon turned into twelve pumps on hire, but the turning point came when Doug purchased his first piece of mobile equipment: an eight tonne JEC crane. There are many great stories that came out of that shed in Eneabba. It was the foundation of Brooks Hire and the place where all of the 'hard yards' were done. Eneabba is remembered as the birth place of Brooks Hire Service.



From the MD...

Happy New Year! I hope you all had an enjoyable festive season.

Looking back, 2024 was a significant year for the Brooks family. We signed an important dealership with XCMG, the world's third largest construction machinery manufacturer. We also signed a strategic agreement with Techking Tyres, bringing the most advanced tyre technology to Australia. Brooks Mining was formed, specialising in the dry hire of mining machinery. We opened a new premises in Kewdale for Site and Fleet Services, as well as opening additional branches in Port Hedland and Karratha for Brooks Group. The year rounded out with our 22nd Harley Draw at the annual Perth Christmas Party. Congratulations to our valued client, Marlee Resources Pty Ltd, on your new wheels.

Looking forward, we are expecting big things for 2025. The mining and construction industries remain steady and are showing an increased demand for electric vehicles, and green energy options. After seeing the possibilities on display at Bauma China, I was astounded at the advancements in battery technology and it is safe to say that XCMG is leading this sector. We will be introducing more and more electric powered machines to our hire fleet and sales stock as they become available.

In more news for 2025, Brooks is already in the process of securing new properties across Australia, to expand our network of branches. By increasing our locations, we'll be able to service our clients better, with machines, parts, and mechanics available in closer proximity to where they're needed. Adding more locations to our group also improves the utilisation rate of our hire assets.

I look forward to improving and growing our business with you all over 2025!

Stuart Brooks
Managing Director

THE Eneabba SUMMER 2025 contents



03 The Greatest Show in the World
Bauma 2024



05 Creating Clean Power
SGC redefines mining for a decarbonised world



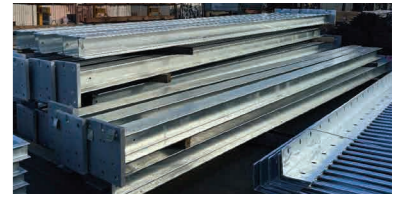
07 There by Air
The solution to faster mine site deliveries



09 Green is the New Black
The rise of electric machinery



11 Winds of Change
Australia's first offshore wind farm



13 Industry Checkmate
Chess Engineering consolidates across the board



15 The Big Dig Project
Digging deep for youth mental health



17 Eyes on the Ball
Suiting up for charity



18 Construction Cup of Glory
Brooks Equipment XCMG CCF WA Golf Day



19 Events and Exhibitions
Out and about with Brooks



21 A Global Partner for Australia
Bringing Techking technology down under



23 Brooks Around the Nation
Branch news from around the country



25 That's a Wrap
2024 Christmas wrap up

25 Welcome Aboard
Meet the new faces at Brooks

31 The Puzzler Page
Flex your brain over a cup of coffee

34 Snap That
Staff photography competition

35 Equipment Hire List
View our entire fleet with specs

Your first choice for Medical Rescue Flights



Medical Air is an accredited provider of national and international medical evacuation flights.

- 6 x Intensive Care Unit (ICU) fitted Learjets
- Australian doctors, medical staff, and pilots on standby
- To and from any country to anywhere in Australia
- Complete bed to bed transfers, including visas
- Private and insurance funded flights



1300 MED AIR (633 247)
@ medical@medicalair.com.au
medicalair.com.au



BROOKS

CONTACT DETAILS
Brooks Hire Service Head Office

30 Coulson Way
Canning Vale WA 6155

Phone: 1300 276 657

Email: sales@brookshire.com.au

www.brookshire.com.au

The Eneabba is a Brooks Hire Service Pty Ltd publication. All photographs and written articles remain the property of Brooks Hire Service Pty Ltd. No reproduction in whole or in part of this publication is allowed without the permission of the Managing Director.

If you would like to make a submission, please email marketing@brookshire.com.au

Digital Distribution 12,884
Printed Copies 5,000



The Greatest Show in the World

BAUMA 2024

A show of staggering proportions, behemoth machines, futuristic technology, and non-stop entertainment. Welcome to Bauma 2024.

Bauma is the world's largest trade fair for mining and construction machinery. The success story of Bauma began in 1954 as a Spring show for construction machinery in Munich, Germany. The trade show, which was small at the time, was created as an effort to increase the use of machinery and accelerate work processes, during labour shortages following World War 2. Initially, it was held annually; but from 1977 onwards, it began being held every three years.

In 2002, Bauma China was launched at the Shanghai New International Expo Centre as the first foreign trade fair in the Bauma network. Held biennially, the exhibition has grown steadily over the years, setting new records for exhibition space, number of exhibitors, and exhibits.

In 2022, the event was postponed due to Covid 19, however, Bauma China 2024 came back bigger than ever, setting new records across the board, including:

- 3,542 Exhibitors from 32 countries and regions
- 281,488 Trade Visitors from 188 countries and regions
- 330,000m² of Exhibition Space



In 2024, Brooks were honoured to be invited to Bauma China as prestigious guests of XCMG. Attending on behalf of Brooks, was Managing Director, Stuart Brooks; Chief Procurement Officer, Vinny Yap; Director of Marketing, Linda Smith; Brooks Mining General Manager, Josh Willett; Brooks Equipment General Manager, Nathan Fenemer; and Brooks Equipment Sales Representative, Kai Li. The event was held from 26th to 29th November at the Shanghai New International Expo Centre.

Kicking off the first day of Bauma 2024, was XCMG's opening ceremony. Situated in the heart of the venue, the XCMG stage was a constant rotation of live entertainment, sound and light shows, and machinery presentations, culminating in the arrival of XCMG Chairman, Mr Dongsheng Yang. Mr Yang welcomed guests from all over the world before declaring the XCMG display officially open.



The biggest stand out feature of Bauma 2024, was the demonstrated effort that mining and construction equipment manufacturers are putting into electric machines and automation. It is clear that customers from all over the world, are demanding greener options, and putting operator safety first.

Unveiled at the event, was XCMG's version 2.0 of its 85t class cableless, autonomous, and electric mining truck, known as the ZNK95. The ZNK95 Intelligent Mining Dump Truck is the largest electric autonomous mining dump truck currently available, and one of the pioneering new energy autonomous mining trucks in the industry. The truck innovatively uses vehicle, cloud, and network collaborative technology to seamlessly switch between short-distance remote control, long-distance remote operation, and autonomous intelligent driving modes. It was shown being loaded by another innovative machine – the XCMG XE1600H, claimed to be the world's largest hybrid mining excavator.



Stuart Brooks and Josh Willett with the XCMG ZNK95 Cableless Intelligent Mining Dump Truck

Bauma 2024 gave an astounding insight into the technology that will reach Australia over the coming years. The next Bauma event will be held in Germany, April 2025. We look forward to being there!

Creating Clean Power

SGC Australia redefines mining for a decarbonised world



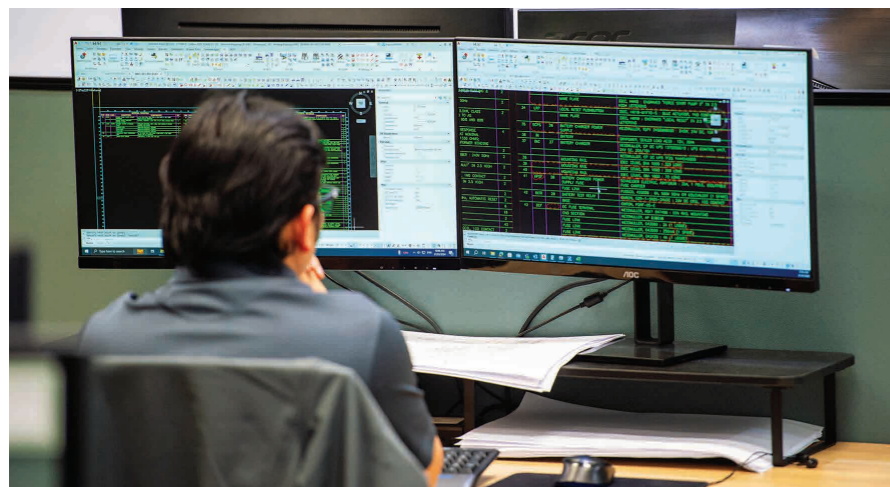
A multi-disciplinary engineering and site services specialist, what are SGC Australia's key capabilities?

SGC Australia offers complete turnkey solutions for diverse applications including process plants, power generation facilities, pumping stations, and bulk handling systems. Our expertise extends to cutting-edge mobile machinery solutions and electrical integration for hybrid power systems and emerging technologies.

Recently rebranding from SG Controls to SGC Australia, what were some of the developments that contributed to this transition?

The rebrand from SG Controls to SGC Australia marks a pivotal moment in the company's journey, reflecting its evolution into a broader, multi-disciplinary business that is positioned to address the challenges of a changing world. Initially recognised for its expertise in control systems, the company has significantly expanded its capabilities over the years to become a leader in engineering, site services, and renewable energy solutions. This transition is more than just a name change; it's a statement of intent, signalling a commitment to innovation, sustainability, and meeting the diverse needs of industries across Australia and beyond.

The rebrand signifies more than growth; it represents a renewed focus on innovation and sustainability.



How is SGC Australia driving sustainability and supporting industries in meeting Australia's emissions reduction targets and the global push for net zero by 2050?

As the world transitions to greener energy, SGC Australia remains a trusted partner for renewable technology integration.

From hybrid power systems, to large-scale solar and wind installations, we help clients reduce their environmental footprint while maintaining productivity.

In alignment with Australia's legislated target to reduce emissions by 43% below 2005 levels by 2030, SGC Australia's solutions are helping industries make significant strides towards compliance.



What sets SGC Australia's Technical Services apart from others in the industry?

SGC Australia's Technical Services Division delivers specialised labour solutions and maintenance expertise tailored to the unique needs of mobile and fixed plant operations. Offering both managed and unmanaged labour hire, we adapt to meet client requirements. Managed solutions provide a fully coordinated workforce, overseen by our team to ensure seamless project execution, while unmanaged solutions offer skilled personnel that clients can integrate into their own teams.

At the heart of what sets us apart, is our people: our skilled tradespeople and the collaborative culture of our office team. Backed by the seamless integration of engineering support, advanced mobilisation systems, and fully equipped tooling solutions, we ensure efficiency and precision at every stage. With decades of experience, SGC Australia embodies innovation, adaptability, and an unwavering commitment to safety, making us a trusted partner for high-demand projects across industries.



What do you see on the horizon for SGC Australia in the next few years?

SGC Australia is poised for a dynamic future, focused on advancing sustainability and innovation across all aspects of our business. Our direction is clear: to provide cutting-edge engineering, sustainability, and safety.

At the forefront of this growth, is our Automation Division, led by Eka's Insight CM platform. This state-of-the-art solution integrates real-time control, 3D visualisation, and advanced modules like Stockpile Management Systems (SMS), Site Automation Controls (SAC), Quality Management Systems (QMS), and the Anti-Collision System (ACS). Together, these technologies optimise asset utilisation, streamline operations, and enhance safety.

Our focus on automation enhances asset utilisation, improves safety, and reduces costs. Innovations like intelligent stacking algorithms, real-time product tracking, and dynamic anti-collision systems are transforming how industries optimise space, ensure quality, and operate efficiently.



There by Air

The solution to faster mine site deliveries

To assist mining clients with urgent freight and staff requirements, Brooks Airways has recently upgraded its aircraft to include reconfigurable cargo space options.

The B200 Super King twin turbo prop aircraft can accommodate loads up to 680kg and is capable of landing in remote locations that are inaccessible to commercial airlines.

Designed specifically for mining, gas, and the resources sectors, the aircraft is available to support clients' Quick-shot requests including samples and dangerous goods. It is fitted with cargo doors to allow for palletised loads and larger items.

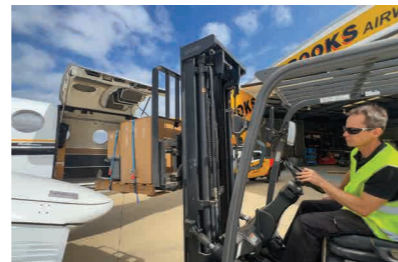
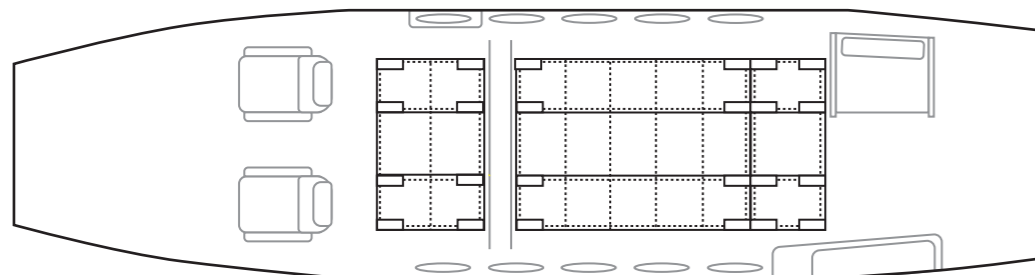
The B200 can be configured to carry a combination of freight and passengers, making it the ideal solution for machine parts and maintenance staff to fly together.

The following diagrams show the configuration capabilities for carrying freight, freight plus 2 passengers, and freight plus 4 passengers.



FREIGHT ONLY CONFIGURATION (680kg)

Config A Config B Config C

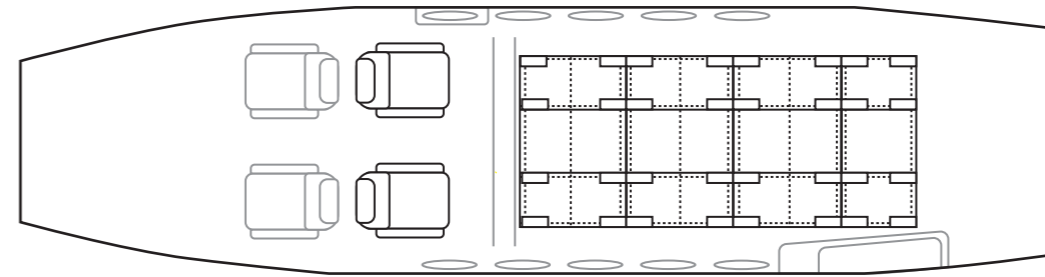


CONFIGURATION	WEIGHT (kg)	DIMENSIONS (cm)	NET ASSEMBLY
A	181	76 x 118	K003 & FA005
B	362	165 x 118	K001 & FA003
C	135	50 x 118	K004 & FA003

The above diagram is just one configuration option for freight. There are other variations to accommodate packages of different dimensions. Our cargo nets are strong and durable, and are built to Civil Aviation Safety Authority (CASA) standards.

2 PASSENGERS PLUS FREIGHT (680kg)

Config M Config N Config D Config E

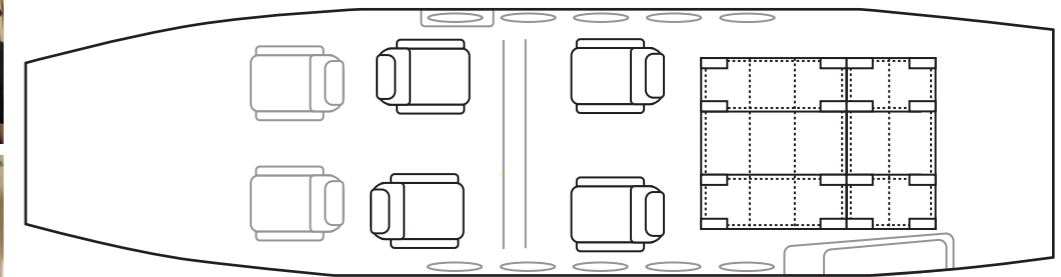


CONFIGURATION	WEIGHT (kg)	DIMENSIONS (cm)	NET ASSEMBLY
M	181	76 x 118	K003 & FA005
N	181	76 x 118	K003 & FA005
D	181	76 x 118	K003 & FA005
E	135	50 x 118	K004 & FA003



4 PASSENGERS PLUS FREIGHT (362kg)

Config H



CONFIGURATION	WEIGHT (kg)	DIMENSIONS (cm)	NET ASSEMBLY
H	362	165 x 118	K001 & FA003

Brooks Airways is available for urgent air freight 24 hours per day. If you need to get something to your mine site fast, call 1300 247 929.





Green is the New Black

The rise of electric equipment

With sustainability, emissions, and cost reduction being top of mind in the mining and construction industries right now, it makes sense that electric powered machinery is gaining momentum.

Electric powered construction equipment has rapidly evolved in a relatively short period of time and XCMG has been at the forefront. Not only bringing innovative technologies, but also shaping them to fit Australia's strict industry requirements, and harsh environmental conditions. In response to increased demand for green power, Brooks Equipment is pleased to present the XC968-EV wheel loader. A powerful workhorse on the ground that offers environmental, noise, and cost reduction solutions.

A New Type of Energy

The XCMG XC968-EV operates using a CATL 282kW/h Lithium Iron Phosphate Battery (LiFePO4 battery). LiFePO4 is a type of rechargeable battery that has several advantages over some other types of rechargeable batteries. They are made up of four main components: Lithium Iron Phosphate (LFP), Positive Electrode, Negative Electrode, and electrolyte. The lithium iron phosphate helps to increase their energy density while the positive electrode and negative electrode help to store the charge that is generated by the battery during use. Finally, the electrolyte helps carry the electrical current between these two electrodes.

The Safest Option

Safety concerns surrounding lithium battery explosions has been solved with the LiFePO4 batteries. Having a special fire-resistant casing that can prevent explosions, and higher thermal stability, these batteries are among the safest types of lithium-ion batteries, making them the perfect choice for commercial applications.

Higher, Faster, Stronger, Longer

LiFePO4 batteries have a much higher energy density compared to other lithium-based batteries. That's because their electrodes can take more charge cycles without losing capacity.

Their charge time is significantly faster than traditional lead acid batteries due to an electrically conductive polymer, allowing it to reach full charge in less time. The battery charge time for the XCMG XC968-EV is around 55 minutes with a 300kw charger, and gives up to 8 hours of operation time.

With an impressive motor power of 270kW, the XC968-EV Loader's LiFePO4 battery can retain its charge for several months, even when not in use. It also has a longer lifespan than other batteries, capable of lasting up to 10 years or more, depending on its usage and storage conditions.

Let's Talk Money

In a pure electric system, the maximum efficiency of the motor is more than 95 percent. The average efficiency of the transmission is up to 97 percent, configured with a braking energy recovery function. In comparison, traditional loaders have an average efficiency of less than 70 percent of the hydraulic torque converter with no recovery of the braking energy, causing high fuel consumption and emission levels. Replacing oil with electricity, the XC968-EV features a compact structure, without the maintenance costs of air filters, engine oil filters, diesel filters, etc.

ANNUAL ENERGY SAVING OF THE XC968-EV COMPARED WITH TRADITIONAL FUEL LOADERS

DIESEL VS ELECTRIC	ENERGY CONSUMPTION	HOURLY COST (AUD/h)	15000h OPERATING COST (AUD)	REFERENCE UNIT ENERGY PRICE
ELECTRIC	40 kW/h	40 x 0.3 = 12	\$180,000	Industrial use electricity unit price: 0.3 AUD/kW.h
DIESEL	16.5L/h	16.5 x 2.2 = 36.3	\$544,500	Diesel fuel price: \$2.20 AUD/L

COST SAVING	\$364,500
--------------------	------------------

A Sound Investment

The added benefit of using electric machinery is the significant reduction of noise. Not only does this reduce the risk of hearing impairment for the operator, it also makes the machine more public-friendly in built up areas.

ITEM	OPERATION COST SAVING FROM ELECTRIC VERSION	COST SAVING FROM OPERATION MAINTENANCE
6t Diesel-Version Loader	\$364,500	\$17,881
TOTAL	\$382,381	

Configured with a pure-electric system, the XC968-EV produces zero emissions and lowers noise by 10-20dB, when compared to traditional loaders.

"Most people are really surprised by how quiet the electric loader is," said Brooks Equipment General Manager, Nathan Fenemer. "When you combine the reduced noise, reduced running costs, and advanced technology on offer, it's easy to see why these electric loaders are becoming so popular."

Machine Walk Around

The XCMG XC968-EV comes with a standard 3.2m³ bucket with optional configurations including buckets from 2.5m³ to 5m³, as well as quick changing and side-dumping tools.

XCMG has put operator comfort at the forefront, featuring an ultra-quiet and low pressurised cabin with FOPS (Falling Object Protective Structures), and ROPS (Rollover Protection Structure). The ultra-quiet cab, offers a large internal space, wide field of view, and comfortable operation. Its dust-proof sealing and noise reduction damper ensure a clean working space, and the intelligent temperature control system ensures that ideal working temperatures are maintained.

XCMG's intelligent management system enables the user to master the operation and maintenance status of the equipment via phone, tablet and computer.

Only a Loader?

No, XCMG has already developed the full range of electric mining and construction equipment. This includes excavators, rollers, graders, forklifts, and dump trucks. They have also developed a fully electric battery grab truck that lifts the depleted battery from your machine, and loads a new pre-charged battery in its place, completely eliminating down time. The prototypes are already being used around the world, and undergoing rigorous testing to bring them into line with Australian standards. It will only be a matter of time until they hit the Australian market.

Brooks Equipment has XCMG XC968-EV Loaders in stock right now. They are available in standard yellow paint, or can be ordered in a special green finish. Potential buyers are encouraged to visit the Head Office and try the machine firsthand. In-house finance can be provided on all equipment sales.



To find out more about the XCMG XC968-EV loader, give Brooks Equipment a call on 1300 276 657, email sales@brooksequipment.com.au, or visit www.brooksequipment.com.au.

Winds of Change

Australia's first offshore wind farm



On the cards for some time now, Australia will soon be home to its first offshore wind farm: Star of the South. Proposed to be situated off the coast of Gippsland in Victoria, the major project is geared towards reaching Victoria's 2 gigawatt by 2032 offshore wind energy target.

While Australia is home to around 90 land-based wind farms, the faster and more consistent wind patterns that occur over sea, allow for a greater proportion of energy to be captured offshore.

Currently in the project development phase, if approvals are granted, Star of the South is set to provide up to 2.2 gigawatts of offshore wind capacity. This output would be capable of providing power to around 1.2 million homes, suppling up to 20 percent of Victoria's electricity needs, and creating up to 6,000 Australian jobs across its lifetime.

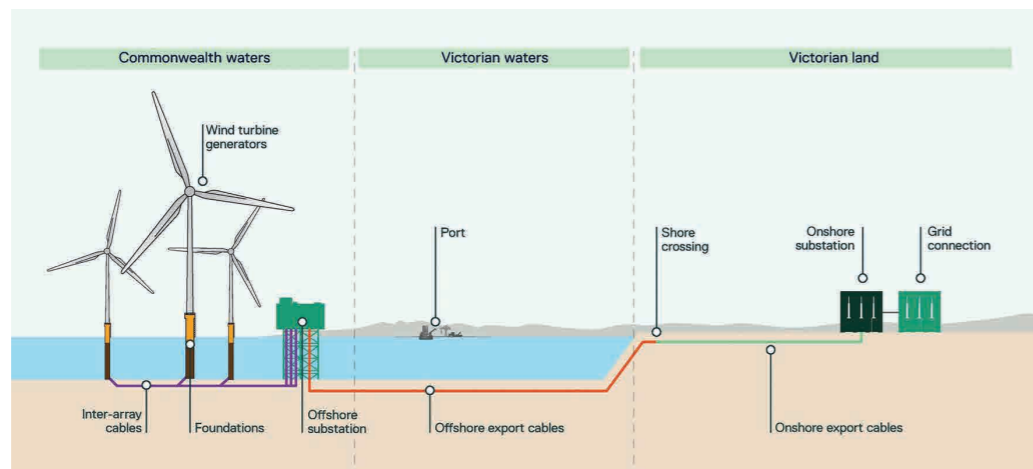
As renewable energy increasingly replaces aging infrastructure, its capacity to match energy output and minimise environmental impact, is a major driver for this change. The Australian Climate Council suggests that "If all the current proposed offshore wind farms were built, their combined energy capacity would be greater than all of Australia's coal-fired power stations."

Bringing Offshore Wind to Australia

75 gigawatts of offshore wind is currently operating worldwide, and with the rapid expansion of renewable technology, another 410 gigawatts is anticipated to be added by 2033.

The Global Wind Energy Council's (GWEC) Global Offshore Wind Report 2024 marked Australia as a 'Market to Watch', with the Australian offshore wind sector continuing to progress at a rapid rate.

Offshore windfarms operate by capturing winds out at sea, through turbines. Utilising export cables and substations, the electricity harnessed is transported onshore. From there, energy is transferred to a major connection point, where it can provide power to homes and businesses.



Proposed at least 10 kilometres off the Gippsland coast, Star of the South will harness the strong winds of the Bass Strait. The specialist offshore wind developer behind Star of the South – Southerly Ten - reported that "Just one spin of an offshore wind turbine can power an average Australian home for 48 hours."

In a project update released in October 2024, the Star of the South team predict that once the project is up and running, "Star of the South would save 7 million tonnes of CO2 emissions per year from going into the atmosphere. That's equivalent to the carbon sequestered by growing 115 million tree seedlings for 10 years."

Additionally, the team predict that the carbon generated during the project's manufacturing, shipping and construction, will be offset within approximately 4.5 months.

On a state level, Minister for Energy and Resources, Lily D'Ambrosio, shared: "Offshore wind is a key pillar of Victoria's renewable energy future. It will create thousands of jobs, generate billions in investment and provide more reliable power for all Victorians."

Building with the Gippsland Community

Typically taking 6-10 years to develop an offshore wind project, including 2-3 years of environmental surveys, the lifespan of an offshore wind project is typically 30 years.

Star of the South was granted a feasibility licence in May of 2024 for a 586-kilometre squared area. The team are currently seeking government approvals to progress with the project, and if all necessary approvals and licences are acquired, are aiming to start construction towards the end of the decade.

Studying the Gippsland area since 2019 to collect data on the local environment, the marine survey program alone consisted of over 13,000 hours of work and resulted in more than 50,000 observations collected.



Implementing advanced technologies, crews set out from Port Albert to survey fish with underwater cameras, and aerial crews collected data on seabirds and other marine wildlife visible from the air.

In addition to surveying local marine life and ecology, special consideration has gone into the public's impact throughout every step, with Star of the South acknowledged as a finalist for the project's community engagement in the 2024 AFR Energy Awards.

Against the Odds

When engaging in such large-scale and complex projects, the attainability of infrastructure, funding, and human capital required to build and manage them, is vital.

The GWEC Global Offshore Wind Report 2024 identifies that high cost of capital, rising raw material costs, and geopolitical uncertainties, have contributed to the slowing deployment of wind projects.

"The burden of complex permitting procedures is greater for offshore wind projects than many other renewable energy installations because they tend to be much larger than onshore wind farms, straddle different jurisdictions or usage zones, and require the use of both land and the seabed."

Australia has been commended for its focus on tackling issues that have delayed projects in other countries, including grid connection, permitting, and market design, among others.

So far, the Australian Government has granted feasibility licences for 6 offshore wind projects, located off the coast of Gippsland in Victoria, with another 6 intended to be granted. If all 12 are built, a potential 25 gigawatts of offshore wind could be brought into Victoria's energy mix. A reliable and high-capacity energy source that's cheaper and cleaner than coal and oil - and able to capture more wind than onshore wind farms - the continuation of offshore wind energy project developments will play a vital role in Australia reaching its net zero by 2050 target.



Industry Checkmate

Chess Engineering consolidates across the board



Since its establishment in 1967, Chess Engineering has grown to become one of Australia's leading engineering companies. Commencing operations in the food processing industry, the company now spans industry sectors, across mining, infrastructure, rail, and Defence.

With advanced facilities in Sydney and Perth, the Sydney office delivers a full-service fabrication and machine shop, while the Perth premises is equipped with advanced large-scale fabrication and machining centres.

The team of highly skilled and qualified engineers, designers, project managers, technicians and production staff, deliver innovative and high-quality solutions tailored to the needs of Australia's most demanding industries.

Driving Infrastructure Development

In its ten years of operation, Chess Engineering (Perth) has seen significant growth in WA's infrastructure sector. This demand has led to the delivery of projects that enhance the state's connectivity and development.

One of the company's flagship projects is the 320 metre pedestrian gantry bridge at John Forrest National Park. Designed to blend seamlessly into the natural environment, this bridge is a central feature of the park's redevelopment. Chess is responsible for the fabrication, construction, and installation of this significant structure, ensuring it meets the highest engineering and environmental standards.

Chess' experience and expertise with complex builds has also seen their involvement in the Stephenson Avenue Extension, building a new pedestrian bridge to connect key areas within the precinct. From fabrication to final installation, the team pride themselves on their ability to adhere to strict specifications in tight timelines.

"Our success lies in our ability to adapt and innovate," says Chess Engineering General Manager, Lachlan Kelly. "We're proud to support projects that leave a lasting legacy, whether in mining, infrastructure, or Defence. Our focus remains on building strong partnerships and delivering results that exceed expectations."



Currently, Chess Engineering are playing a crucial role in the Smart Freeway - Mitchell Southbound project. In addition to widening sections of the freeway and building new lanes, improved shared paths are being created between Ocean Reef Road and Warwick Train Station.

Once complete, the Smart Freeway will include co-ordinated ramp signals, adjustable digital speed limit signs, and electronic message boards to safely notify drivers of an incident or possible delay ahead.

Utilising a Brooks Access 60-foot Genie Z-62/40 and 80-foot Haulotte HA26 RTJ Pro articulated boom lift, Chess is installing safety barriers and noise walls throughout the development. These installations will contribute to improving traffic flow, safety, and the overall modernisation of the road network.

Mining Excellence

While infrastructure has become a key growth area, Chess Engineering continues to build on its strong foundation in mining. In Western Australia, Chess' Perth facility has become the centre of its mining and infrastructure operations, and home to the company's largest cranes and machines. Manufacturing key components for tier one international and local companies, the facility enables the team to deliver large-scale, complex projects, supporting the region's industries and infrastructure development.

Industry Advancements

In a 2021 interview with the Australian Steel Institute (Vol 34, No 2), Chess Engineering CEO, Steve Facer spoke on how the unit's output was furthering the business' capabilities: "One of our current projects that I'm most excited about is a series of agricultural robots, which are mechanical weeders that drive up and down crop rows and, when finished, drive themselves back to the shed."

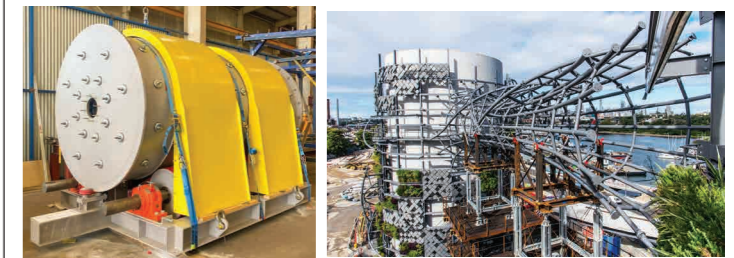
Backed by a skilled workforce and state-of-the-art facilities, it is this drive to source more efficient outcomes for clients that sees Chess continually producing industry-leading work. As Facer puts it, "Our team comes to work to solve problems and make valuable contributions."

Looking to the Future

A multi-disciplined mechanical and structural steel engineering firm, Chess Engineering continues to make strides in the industries it services. Into the future, Chess Engineering is positioning itself for continued growth by expanding into the Defence sector. With plans to achieve DIN 2303 certification for military-grade welding and allied processes, the company aims to take on complex Defence projects while reinforcing its leadership role in WA's industrial landscape.

As a team, Chess is here for the long term, with a mission of ensuring their clients' business success. This is a sentiment fully backed by Kelly, who concluded that "Chess Engineering is about innovation and adaptability. Our team thrives on solving complex challenges for our clients, delivering projects that have a lasting positive impact on Western Australia. Expanding into infrastructure has been a natural progression, and we're proud to contribute to shaping the region's future."

As it continues to expand its capabilities, Chess Engineering is poised to shape a brighter future for Western Australia, contributing to its industries, communities, and economic growth.



The Big Dig Project

Digging deep for youth mental health



On a weekend in late October, just south of Perth's CBD, a group of individuals set to work digging holes in the name of youth mental health. Over the span of twenty-four hours, the group endeavour generated close to \$110,000 for zero2hero.

The man behind the initiative, is Goran Utjesinovic. General Manager of Infrastructure at Benang, Goran's mission is for every child and young person to be educated and empowered to effectively deal with mental health issues.

A Shovel in Hand

First embarked upon in 2016 by Goran and a group of mates who backed his - then considered - outlandish idea, The Big Dig was born with a shovel.

With a background and career working in construction, and a desire to engage those within the industry, Goran saw the unassuming tool as an unsung hero in countless industries, from farming and construction to mining.

To Goran, the shovel was representative of more than an earthmoving tool: looking back at years past, railroads were built, foundations were laid, and fields were cultivated, all with the power of a simple shovel.

"Each scoop of earth represents not just a physical effort, but a story of determination and grit," Goran explains. "The shovel reminds us that hard work and dedication are timeless.

"Just as each scoop of earth requires effort, every challenge we face requires determination. Kids today face pressures from many directions—school, social media, and future uncertainties. But like the shovel, they have the tools to dig deep and overcome these challenges."

The Big Dig 2024

The second annual Big Dig, and fourth in total, The Big Dig 2024 was the largest to date.

Drawing 50 participants, diggers worked in teams or as individuals to shift a whopping 1000 tonnes of earth overall. With more teams than ever before, participating companies included Calroc, Brown Plumbing & Civil, DM Civil, and Benang, to name only a few.

Brooks' Business Representative, Romana Begicevic attended the event as a spectator, sharing that "The comradery and commitment to physical and mental health was inspiring and truly powerful to be a part of and to witness."



Providing some competitive spirit within the teams' collective efforts, participants competed in 'The Dig Off' with a target to be the first group to dig 100 tonnes, or an individual with the most tonnage dug in 24 hours.

This year's Big Dig crowned Calroc as winners, having dug 200 tonnes in less than 3 hours.

In 2018, founder Goran Utjesinovic held the individual record with 53 cubic meters and 75 tonnes dug in a 24-hour period. 2024 saw a new victor crowned, with Josh Brown from Brown Plumbing & Civil setting the new record of 78 tonnes.

For Generations to Come

Once again, the community united for the event, with Streamline donating a zero-emission crib room, Bunji Australia providing fencing, and WA Limestone offering their premises as the venue. LGC provided ablutions, while Silverstone handled site setup and surveying. The site was kept illuminated throughout the night, thanks to BriteForce supplying solar lighting plants, and Brooks Site Services providing lighting towers.

Every dollar raised from the event was donated to zero2hero, helping deliver programs that empower young people to become mental health leaders and help prevent suicide in Western Australia.

Goran explains that through the event and by embracing the spirit of the shovel, "we can help the next generation understand that with hard work, determination, and resilience, they can build their own paths to success. It's a ripple effect; the more conversations we have, the more impact we make on the next generation, and the one after that, and so on."

While the event raised vital funds for the non-profit organisation, Goran sees it as more than a charity event: "I see it as education, involvement, and commitment in paving the way for everyone, making our kids more prepared for whatever they may face in their journey. My philosophy is 'work gives purpose; purpose gives you good health.'"

"Every great achievement starts with a single, determined effort— just like the first dig of a shovel."

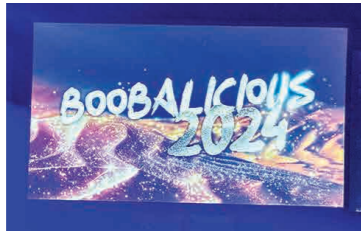
With participation growing at the event each year, Goran doesn't plan to stop here; stay posted on The Big Dig 2025, which will be bigger and better than ever.



Eyes on the Ball Suiting up for charity

Boobalicious Ball

Launched in 2004, Boobalicious is an extraordinary black tie event, with a charitable twist. One of the most anticipated events of the year, Boobalicious raises funds for Breast Cancer Care WA. The charity receives no recurrent government funding, and relies solely on the kindness of the WA community.



Brooks supported Boobalicious 2024 by purchasing a table of 10, which was attended by ten lucky Brooks staff members. Through the support of many generous sponsors, the 2024 event raised \$182,100 for Breast Cancer Care WA.

City of Canning Mayor's Charity Gala



The annual City of Canning Mayor's Charity Gala was held on Friday, 8th November. Sponsored by Camco Engineering, the 2024 event raised a record setting \$85,291 for Good Sammy.



RMHC WA Gala Ball

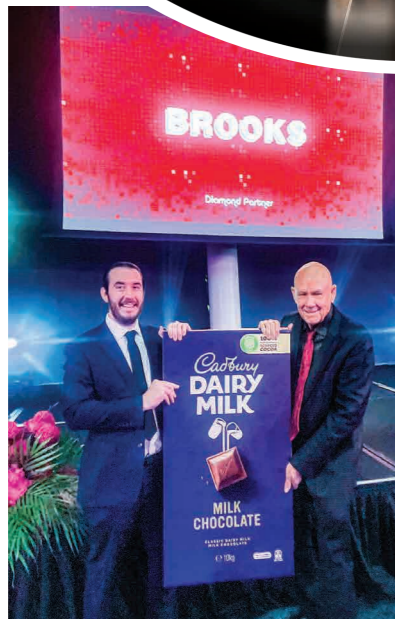
The Brooks family have been Gold Sponsors of the Ronald McDonald House Charities (RMHC) Ball for 22 years. RMHC provide a place where families can stay when their child is ill or injured in hospital. The 2024 event was the charity's 30th year. Themed 'Pearl', the Gala Ball raised a record \$2.03 million. A big thank you to all sponsors.

Red Cape Ball

The highly anticipated Red Cape Ball was held on Saturday, 9th November.

Now in its 6th year, The Red Cape Ball is an unforgettable night of celebration held annually to raise money for zero2hero, a charity that supports youth mental health. Brooks was a Diamond Table Partner.

An auction on the night saw Doug Brooks make the winning bid of \$8,000 on a massive 10kg block of chocolate, with all proceeds going to zero2hero.



Construction Cup of Glory

Brooks XCMG CCF WA Golf Day



On Friday, 6th December, a sold-out crowd of 216 golfers gathered at Joondalup Resort for the annual CCF WA Golf Day. Brooks has been the Major Sponsor of the event for several years, and this time they were represented by Brooks Equipment and XCMG.

The Civil Contractors Federation WA (CCF WA) represents, informs and connects civil contractors and associated businesses in the Western Australian civil construction industry. Their annual golf day is a sell out event looked forward to by many in the construction industry. To win the trophy is a highly coveted achievement.

This time, it was Humes, who put on a gallant effort to beat out last year's winners, Enviro Infrastructure, who scored 2nd place. Acu-Tech Piping Systems came in 3rd. The winners of the 'Longest Drive' were Jake Taylor, Ryan Carson, Matt Gannon, and Kelly Wheeler. The 'Nearest to the Pin' Award winners were Stephen Clifford, Douglas Browne, and Peter Cox. Finally, Coffey Testing won the NAGA award. Brooks wish all the winners a huge congratulations. The competition was tough, but there's always next year.

Every year, the CCF WA Golf Day gains momentum, with tickets selling out at a rapid pace. It's a great event to network and golfers are treated to free goody bags, breakfast, massage stations, sausage sizzle, and post game function with food and drinks.

Thanks to CCF WA for their tireless efforts organising the event. Thank you also to the other event sponsors, MJB Industries, Coffey Testing, Acu-Tech Piping Systems, Assignar, CJD Equipment, Clover Pipelines, Dobbie, Hitachi Construction Machinery Australia, Hydra Storm, National Pump and Energy, Oakwood Consulting, ReddiFund, SITECH WA, and The Technical & Engineering Network.



EVENTS AND EXHIBITIONS

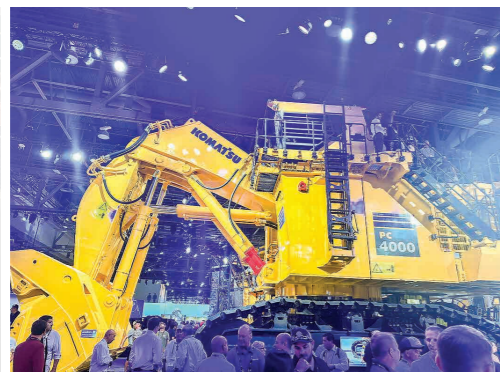
CCF WA Earth Awards

The CCF WA Earth Awards is the civil construction industry's annual celebration of excellence in infrastructure project delivery. There are seven award categories, from projects valued under \$2 million to projects valued over \$150 million. Brooks Hire is an annual category sponsor. Brooks Business Representative, Bella Martin, presented the award for Project Value Greater than \$150 Million, which was won by Tonkin Gap Alliance. Many congratulations to all nominees and winners.



ACBC China National Day

On Wednesday, 2 October 2024, Australia China Business Council (ACBC) WA and China Chamber of Commerce in Australia (CCCA) Perth Branch held their annual China National Day celebrations at the Fraser's State Reception Centre in Perth, Western Australia. The event welcomed more than 200 attendees from government, business, academic and cultural institutions to celebrate the 75th anniversary of the founding of the People's Republic of China, and to more broadly celebrate the Australia-China relationship. The evening was MC'd by the chairs of both organisations (Mr James Clarke (ACBC WA) and Dr David Sun (CCCA Perth Branch)), with speaker Hon Roger Cook MLA Premier of Western Australia.



WALGA Exhibition



The Western Australian Local Government Association (WALGA) held their annual exhibition at the Perth Convention and Exhibition Centre from 8th-10th October, 2024. The event brings together elected members, council officers, and key stakeholders as part of a unique program of professional development, networking and business opportunities. It is also a unique opportunity for preferred suppliers to meet council representatives and showcase the latest innovations and technologies across the sector. The Brooks Equipment Sales stand drew a huge crowd, all looking for a close up view of three large XCMG machines on display. These included a GR2045 12ft Grader, an XS123 12t Smooth Drum Roller, and an XC968-EV Electric Loader with a 3.2m³ bucket. Brooks Equipment General Manager, Nathan Fenemer and his WA sales team, Joe, Glen, and Kai were at the event to answer questions.

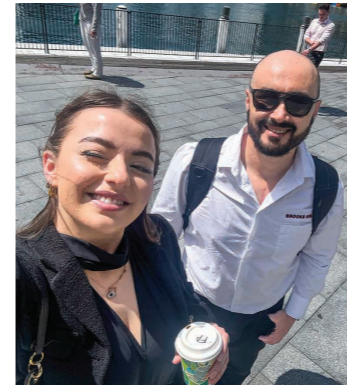
MINExpo International

MINExpo International is a premier event on the global mining calendar, taking place every four years in Las Vegas, USA. The event attracts exhibitors and delegates from around the world to learn about the latest industry trends, emerging technologies, cutting-edge innovations and new-to-market products. Our Chief Business Officer, Lenore Brooks was in Las Vegas at the 2024 event, checking out the latest mining equipment.

IMARC

The International Mining and Resources Conference (IMARC) is where the most influential people in the mining industry come together, delivering ideas, inspiration and serving as a meeting ground for industry leaders. The world-class conference program features nine concurrent conferences covering the entire mining value chain with more than 370 technical talks, panel discussions, and strategic keynote presentations taking place throughout the three days.

Brooks Business Representative, Bella Martin attended on behalf of the Brooks, catching up with Sydney Sales Representative, Francisco Lagos, whilst there.



AMPAC Sydney Cruise

AMPAC, our supplier of fire detection and alarm systems, hosted a lovely afternoon cruising Sydney Harbour. Shout out to Mark who invited Francisco Lagos, and Tim Hearn, from our Brooks Sydney branch to enjoy the day.



CCFWA Women in Civil Sundowner

It was a balmy Spring evening, on November 14th, when women who work in the construction industry all over Western Australia, gathered for the annual CCFWA Women in Civil Sundowner. Nine lovely ladies from Brooks turned up for the event, which is an excellent opportunity to network and support women in construction.

WA Mining Conference



The 2024 WA Mining Conference and Exhibition (WAME) experienced its highest attendance level in the event's history, with 3,000+ attendees, 120+ exhibitors, and 40 speakers over the two-day event. Held at the Perth Convention and Exhibition Centre, Brooks were there representing all divisions of the company.

"If you're in the mining game, WAME is a must attend event," said Brooks Mining General Manager, Josh Willett. "The most important people in WA mining are there. It definitely gets my vote!"

Brooks has already booked a stand for 2025, and we plan on being back bigger than ever.



A Global Partner for Australia

Bringing Techking technology down under

In October, 2024, Brooks was invited to participate in the Techking Tire Global Partner Conference in Qingdao, China. The invitation came off the back of a strategic partnership instigated earlier in the year, between Brooks and Techking Tires.

The Global Partner Conference saw over 200 Techking customers from around the world, and 130 staff members come together with the vision: 'THE ONE - THE FUTURE'.

Attending on behalf of Brooks was Managing Director, Stuart Brooks; Chief Procurement Officer, Vinny Yap; National Parts Manager, Jack Eyo; and Brooks Mining General Manager, Josh Willett. Stuart Brooks was invited to the stage to share the story of Brooks' history, Brooks' involvement in the Australian mining and construction industries, and their future with Techking Tires. He then co-signed a Certificate of Agreement with Techking Founder and CEO, Mr Tech Wang, cementing the dealership agreement.

Techking is a leading supplier of Off The Road (OTR) tyres for the mining and construction industry. They have a total of 134 tyre patents, and provide tyres to over 40 world-renowned equipment manufacturers including XCMG, Leibherr, Tadano, and JCB. Techking tyres are already being used by leading Australian mining companies including Rio Tinto, Glencore, BHP, and Vale. As an authorised dealer of Techking Tires, Brooks Equipment is now a supplier to the Australian market.



What does this mean for Australia?

Techking has invested copious resources into creating the perfect tyre to suit each machine and job type. Their concept of 'right tyre, to right application' has been at the core of their technological advances. Through a rigorous testing process, beginning in the Engineer's drawing room, every new tyre patent goes through a 5 step testing period to ensure that it performs at the highest level possible. If a prototype tyre fails in any capacity, it goes straight back to the drawing room to be reworked, until the problem is solved.

One example of this, was their custom production of a grader tyre for Rio Tinto in the Pilbara Region of Western Australia. Rio Tinto required a tyre with an extreme cutting resistance compound to fit their CAT 14/16M graders. Techking was able to produce a product that helped Rio Tinto increase machine performance and operation efficiency. It is this strong desire to produce the best tyres in the world, and dedication to customer satisfaction, that enforces Techking as a world leader in tyre technology.

Brooks Equipment has committed to importing an ongoing supply of OTR tyres into the Australian marketplace. With a great deal of trust in the technology and research that goes into the manufacture of Techking tyres, Brooks will fit all of our own hire equipment with the tyres, giving clients the opportunity to use the product first-hand in challenging Australian conditions.



In addition to our hire fleet, all new XCMG machines to be sold by Brooks Equipment Sales will be factory fitted with Techking tyres.

"We know this is a great product," said Brooks Managing Director, Stuart Brooks. "Techking has proven that they're tyre technology is superior to others in the market. That's why we are investing so strongly in them," he continued. Stuart went on to joke, "if they made aircraft tyres, we'd even put them on our aeroplanes."

Brooks Equipment Sales has Techking OTR tyres available for loaders, graders, dump trucks, dozers, cranes, road trains, and underground mining.

To find out the most suitable tyre for your machines, visit www.brooksequipment.com.au



National Family Business Day



Family run businesses account for 70% of all businesses in Australia, and Brooks is proudly one of them. In September 2024, we celebrated National Family Business Day with a nationwide lunch for all Brooks branches and divisions.



Lights on the Hill



Lights on the Hill Trucking Memorial Incorporated is a not for profit organisation dedicated to the hard working members of the Australian transport industry. Every year, they hold a Memorial Convoy dedicated to those who have lost their lives on the job.

In 2024, the event attracted 732 trucks, including our Brooks Transport Volvo prime mover driven by our HC Driver, Greg McLachlan. Greg drove to represent close family friend, Jake 'Chrighto' Chrighton, who was killed in an accident in March 2024.



Spook Night in Newman

The ghosts and ghouls were out in force for Halloween in the remote town of Newman, WA. Shout out to Workshop Foreman, Lloyd Baer for preparing and delivering our Komatsu WA320 loader for display at the street party. We lured a few spooks into the bucket for a treat, including Lloyd's daughters, Lexie and Ruby.



World's Greatest Shave

No hair? Who cares! Brooks team members, Adrian Rorbach and James Delcore committed to no cutting, trimming, or shaving their heads from 1st May 2024 to take part in the World's Greatest Shave. On 2nd November, after 6 months of growth, their 'noggins' were unveiled. Candis Deccache and Denise Harding also dyed their hair to support the cause. Afterwards, the team raised more money by donating to participate in a Brooks wine tour. The World's Greatest Shave raises much needed funds for The Leukaemia Foundation.



Melbourne Cup Day



Fashions were being flaunted on Melbourne Cup Day at the 'Suited' Moët and Chandon Luncheon. Brooks ladies, Cassie and Roma hosted some lucky clients, along with other Brooks staff, Bella Martin, Joe Goulding, Katelyn Gibson, and Megan Heffer

That's a Wrap!

From Tom Price to Toowoomba, we wish all of our clients, suppliers, staff, and friends a safe and prosperous 2025. Congratulations to Marlee Resources who won our 22nd Harley Davidson motorcycle competition.



Ross Robinson, 2nd Place in the Staff Christmas Draw



Brooks Tom Price Branch



Lenore Brooks with Scott & Tenay Stringer from Marlee Resources



Ian Hedley, winner of the Brooks Staff Christmas Draw



Dylan Prince, 3rd Place in the Staff Christmas Draw



Port Hedland Branch



Brooks Brisbane Branch



Port Hedland Branch

Welcome Aboard

Michelle Caldwell

What was your first job: Waitress in a posh hotel in Skipton UK.

What is your role at Brooks: Administration Assistant, Karratha WA.

What did you want to be when you were growing up: A millionaire.

What achievement in life are you most proud of: My children.

How would you describe yourself in 3 words: Loud big mouth.

Where would we find you on the weekends: At home with my family and Boofy Boxer puppy.

What is something that you're really good at: Talking.

What is something that you're really bad at: Cooking.

If you could invite anybody to dinner (dead or alive), who would it be: Ed Sheeran.

Favourite cake: Pavlova.

Favourite song: "In Case You Didn't Know" by Brett Young.

Favourite holiday destination: Dubai.



Mikayla Moulton

What was your first job: Beauty therapist and nanny.

What is your role at Brooks: Hire Coordinator for Brooks Mining, Welshpool WA.

What did you want to be when you were growing up: A millionaire.

How would you describe yourself in 3 words: Honest, bubbly, outgoing.

Where would we find you on the weekends: At the gym, hiking, or indulging in an unnecessary shopping spree.

What is something that you're really good at: Talking – even better after a few wines!

What is something that you're really bad at: Bowling and golf.

If you could invite anybody to dinner (dead or alive), who would it be: Ariana Grande - ha ha!

Favourite cake: Chocolate Mud Cake.

Favourite song: Depends on the month - ha ha!

Favourite holiday destination: Dubai.



Mia Mazzega

What was your first job: Check out chick at my parent's hardware store.

What is your role at Brooks: Office Coordinator, Kewdale WA.

What did you want to be when you grew up: Famous.

How would you describe yourself in 3 words: Loud, honest, loving.

What is something that you're really good at: Cleaning and organising.

If you could invite anybody to dinner (dead or alive), who would it be: My grandfather, I miss him dearly.

Favourite Cake: Corica Torta.

Favourite holiday destination: Italy.



Brodie Ashwell

What was your first job: Comms Technician.

What is your role at Brooks: Hire Coordinator, Canning Vale, WA.

What did you want to be when you grew up: Play cricket for Australia.

What achievement in life are you most proud of: The day I had my house built.

How would you describe yourself in 3 words: Kind, caring, and cheeky.

Where would we find you on the weekends: Either playing or watching footy, or at the park with my dog, or spending time with my family.

What is something that you're really good at: Statistics and gardening.

What is something that you're really bad at: Dancing, lol.

If you could invite anybody to dinner (dead or alive), who would it be: Matthew Perry / Shane Warne / Michael Buble.

Favourite Cake: Black Forest.

Favourite Song: "Green Green Grass" by George Ezra, or "Everywhere" by Nial Horan/Anne-Marie.

Favourite holiday destination: Seeing the Northern Lights in Canada is on my bucket list.



Marwin Samson



What was your first job: Drill Rig Mechanic.

What is your role at Brooks: HD Mechanic, Newman WA.

What did you want to be when you grew up: Pilot.

What achievement in life are you most proud of: Being here in Australia.

How would you describe yourself in 3 words: Simple, motivated, honest.

Where would we find you on the weekends: Brooks Hire workshop in Newman, working with Alex P.

What is something that you're really good at: Playing PuB-G .

What is something that you're really bad at: Cooking.

If you could invite anybody to dinner (dead or alive), who would it be: Edgardo Samson, my family.

Favourite Cake: Cheesecake.

Favourite Song: "The Emptiness Machine" by Linkin Park.

Favourite holiday destination: Norzagaray Bulacan, Philippines.

Andrew Milton



What was your first job: Horse Ride Operator at Turners Cottage, and Shop Assistant at Serpentine Butchers. I started both in the same weekend when I was just over 15.

What is your role at Brooks: Transport Scheduler, Canning Vale WA.

What did you want to be when you grew up: Truck Driver or a Chef. Done both jobs.

What achievement in life are you most proud of: Never, ever giving up, even during the worst time of my life.

How would you describe yourself in 3 words: Trustworthy, reliable, stubborn.

Where would we find you on the weekends: Spending time with my family at home or out and about.

What is something that you're really good at: Cooking with my smokers.

What is something that you're really bad at: Asking for help.

If you could invite anybody to dinner (dead or alive), who would it be: My daughter Evie who passed away in January. I'd give anything to spend some time with her.

Favourite Cake: Cheesecake or Pavlova.

Favourite song: Depends on my mood. I have many favourites.

Favourite holiday destination: South Africa (anywhere, but Gauteng Province is my favourite).

Eula Catalan



What was your first job: Service Assistant at a Komatsu Dealer in the Philippines.

What is your role at Brooks: Hire Administrator, Canning Vale WA.

What did you want to be when you grew up: A writer.

What achievement in life are you most proud of: Being a Mum.

How would you describe yourself in 3 words: Mindful, adaptable, and friendly.

Where would we find you on the weekends: Enjoying quality time at home, or in a family-friendly café.

What is something that you're really good at: I'm best at annoying my husband .

What is something that you're really bad at: I'm not very skilled at cooking, but luckily I have the best husband who loves to cook!

If you could invite anybody to dinner (dead or alive), who would it be: My Dad.

Favourite Cake: Chocolate.

Favourite song: "Maybe the Night" by Ben&Ben.

Favourite holiday destination: Philippines.

Glen Sliskovic

What was your first job: Fruit and Veg Assistant.

What is your role at Brooks: Sales Manager WA - Access & Material Handling, Brooks Equipment, Welshpool WA.

What did you want to be when you grew up: Architect like George Costanza.

What achievement in life are you most proud of: Travelling the world.

How would you describe yourself in 3 words: Energetic, positive, and driven.

Where would we find you on the weekends: On the Harley.

What is something that you're really good at: Cooking.

What is something that you're really bad at: Break dancing.

If you could invite anybody to dinner (dead or alive), who would it be: Hannibal Barca.

Favourite Cake: Anything with custard.

Favourite Song: "Comfortably Numb" by Pink Floyd.

Favourite holiday destination: Croatia.



Ivan Chia

What was your first job: Desktop Support at King & Wood Mallesons.

What is your role at Brooks: Hire Administration, Canning Vale WA.

What did you want to be when you grew up: An archaeologist because I like history.

What achievement in life are you most proud of: Survive and have food on table.

How would you describe yourself in 3 words: Diligent, responsible, problem solver.

Where would we find you on the weekends: Could be anywhere, just have to call me.

What is something that you're really good at: Technology, I like cloud technology and currently undertaking studies/exam for Microsoft Azure Admin 905.

What is something that you're really bad at: Something I never learned/knew before.

If you could invite anybody to dinner (dead or alive), who would it be: It will probably be my wife.

Favourite Cake: Anything but Matcha.

Favourite Song: Don't have one now.

Favourite holiday destination: Japan. I just went there in April.



KK Liu

What was your first job: Marketing.

What is your role at Brooks: Supplier Onboarding Administrator, Welshpool WA.

What did you want to be when you grew up: Lawyer.

What achievement in life are you most proud of: My wife and daughter.



How would you describe yourself in 3 words: Happy, simple, easy-going.

Where would we find you on the weekends: Home.

What is something that you're really good at: Sleep.

What is something that you're really bad at: Shopping with women.

If you could invite anybody to dinner (dead or alive), who would it be: My Grandmother (passed).

Favourite Cake: Tiramisu.

Favourite Song: "Fūshika-den" by Shinji Tanimura.

Favourite holiday destination: Vietnam.



Hamz's Kitchen

Perak Style Beef Dendeng

When he's not flying the drone, or putting together a snappy video for Brooks, our Digital Marketing Coordinator, Hamz, is whipping up this delicious Malaysian dish.



INGREDIENTS

- 1kg Beef
- 1/2 Cup Sweet Soy Sauce (marinade)
- 3 x Sticks of Lemongrass, chopped
- 12 x Shallots, chopped
- 4 x Cloves of Garlic, chopped
- 2 x Inches of Ginger, chopped
- 12 - 15 x Stalks of Dried Chilli
- 2 x Cups of Cooking Oil
- 3/4 Cup Sweet Soy Sauce
- 4 x Kaffir Lime Leaves
- 1/2 Piece Palm Sugar
- Salt to taste

METHOD

1. Boil the meat until soft, approximately 45 minutes to 1 hour; do not discard the water.
2. Boil dry chillies until soft; drain the water and discard the seeds.
3. Coarsely grind the lemon grass, shallots, garlic, ginger, and chillies in a blender, adding half a cup of broth from the beef.
4. Thinly slice the boiled meat (about 1/2 cm thick) and pound the edges until slightly crumbled. Marinate in sweet soy sauce for a few hours.
5. Fry the meat using oil until the edges are crisp, then remove and set aside.
6. Saute all the ground ingredients until thoroughly cooked, and the oil separates.
7. Add 2 cups of meat broth and boil, then add all the fried meat, palm sugar, salt, sweet soy sauce and lime leaves. Cook until the sauce thickens.
8. Serve with rice or ketupat (pressed rice cakes).

The Puzzler Page



Spot the Difference

There are 10 differences between the photos below. See if you can find them all.



Word Solver

Find the 9 letter word using the letters in the grid, then try to make as many other words as you can. Words must be a minimum of 4 letters and must contain the middle letter. No proper nouns or plurals.
Good - 15 Words **Very Good** - 20 Words **Excellent** - 25 or more

A	Y	C
O	A	P
C	N	M

Crossword

Across

- 1. Better late ____ never
- 5. Peruvian Indian
- 9. Phonograph records
- 14. Unaccompanied
- 15. At hand
- 16. Spouse's kin (hyph.)
- 17. Advocate
- 19. Sleep noise
- 20. Scoffed
- 21. Bother
- 22. Bureau
- 25. Bunny's jump
- 26. Bread portion
- 30. Jeans material
- 31. Hot chocolate
- 32. Deface
- 33. Potter's need
- 37. Shaquille ____
- 38. Small drink
- 39. Calcutta's country
- 40. Midterm, e.g.
- 41. ____ Juan
- 42. Broadway lights
- 43. Vamoose!
- 45. Greek letter
- 46. RR terminal
- 49. Kenya's capital
- 51. Building cement
- 53. Most cherished
- 58. Baseball blunder
- 59. Unceasingly
- 61. Expiate
- 62. Pulled apart
- 63. Hog's dinner
- 64. Married again
- 65. Lincoln's coin
- 66. Book leaf

Down

- 1. Chef's measures (abbr.)
- 2. Trumpet, e.g.
- 3. Burn balm
- 4. Negative reply
- 5. Not outer
- 6. Required
- 7. Soup container
- 8. Gallery contents
- 9. Render harmless
- 10. Rustic hotels
- 11. Splash
- 12. Monte ____
- 13. Use a broom
- 18. Trying experience
- 21. Will beneficiary
- 23. Symposium
- 24. Crisp cookie
- 26. Glasgow native
- 27. The ____ Ranger
- 28. Freezes
- 29. Outer garment
- 33. Leg hinge
- 34. Revered person
- 35. Fabric fuzz
- 36. Apollo agcy.
- 38. Hindu dress
- 39. Calcutta native
- 41. "The Lion King" villain
- 43. Trapped
- 44. Contemporary
- 46. Blur
- 47. Pastry
- 48. Pointer
- 50. Flat cap
- 52. Hue
- 54. File
- 55. She, in Seville
- 56. Walk heavily
- 57. Kind
- 59. List abbr.
- 60. Sock end

1	2	3	4		5	6	7	8		9	10	11	12	13
14					15					16				
17					18					19				
20									21					
				22			23	24				25		
26	27	28	29			30								
31						32				33	34	35	36	
37						38				39				
40					41					42				
				43				44		45				
46	47	48		49					50					
51			52					53			54	55	56	57
58						59	60							
61						62					63			
64						65					66			

Sudoku

Enter numbers into the blank spaces so that each row, column and 3x3 box contains the numbers 1 to 9 without repeats.

			3		8	5	1	
8						7	9	2
	4		9					
			6		4		7	8
2		7				6		
5						9	3	1
		8			3		6	9
		3			5	8		
4	2	9	8	7				



Brain Teasers

How many bricks does it take to complete a building made of brick?

Jane and Bob have four daughters. Each of their daughters has one brother. How many children do Jane and Bob have in total?



A pizza place has an offer where you can swap five empty pizza boxes for a free pizza. Joe has collected 25 pizza boxes. How many free pizzas can he get?

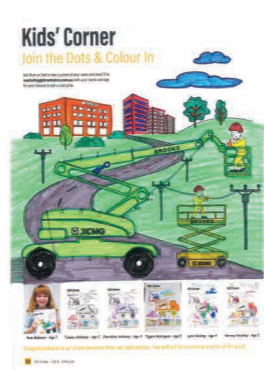
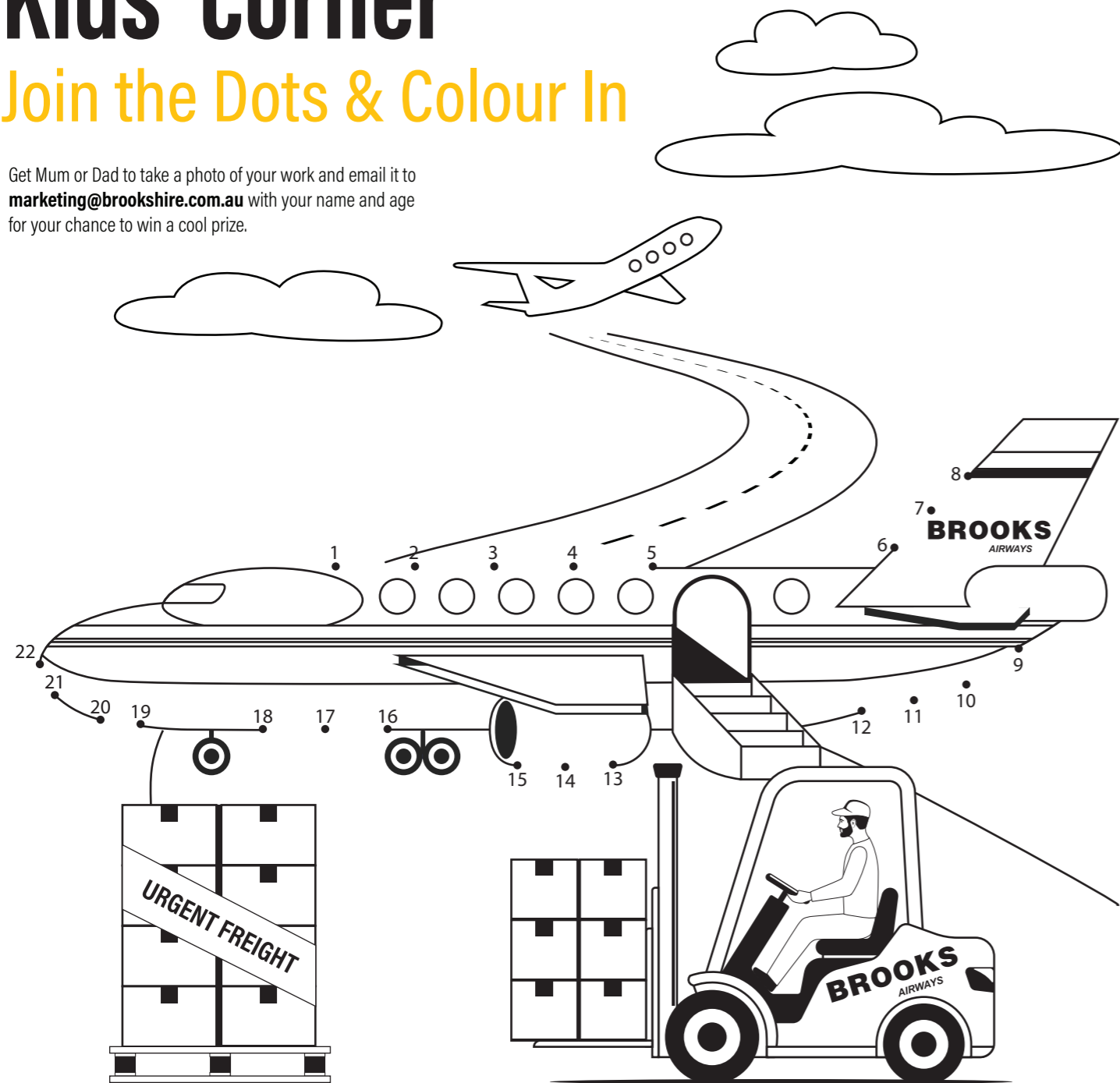
If you have it, you want to share it. If you share it, you don't have it. What is it?

I am a box that holds keys without locks, yet they can unlock your soul. What am I?

Kids' Corner

Join the Dots & Colour In

Get Mum or Dad to take a photo of your work and email it to marketing@brookshire.com.au with your name and age for your chance to win a cool prize.



Tigger Rodrigues - Age 5

Neesa O'Connor - Age 6

Hannah Swan - Age 8

Chloe Sawyer - Age 7

Savannah Fox - Age 9

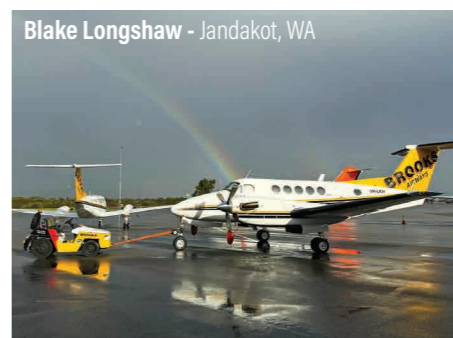
Congratulations to all of the winners from our last edition. You will all be receiving a prize in the post.



Hayden Rance - Bunbury, WA

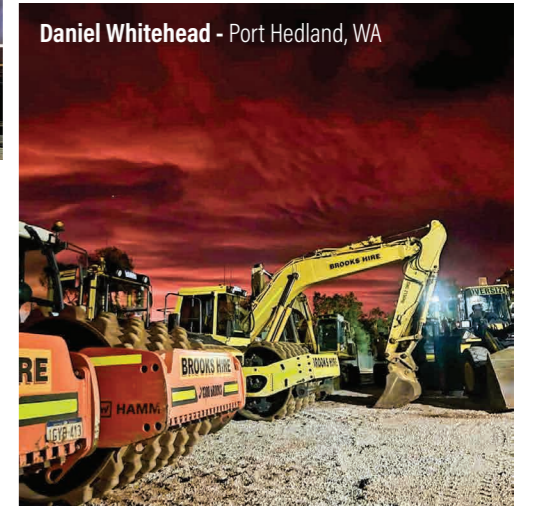


Shayden Worth - Albany, WA



Blake Longshaw - Jandakot, WA

Snap That



Daniel Whitehead - Port Hedland, WA



Blake Hedley - Geraldton, WA



BJ Schwerin - Dalby, QLD



Trevor Woods - Perth, WA

Equipment Hire List

Excavators



CATEGORY	MAKE	MODEL
1.5 Tonne	Komatsu	PC14R
1.75 Tonne	Sany	SY16C
1.8 Tonne	XCMG	XE17U
1.8 Tonne	Caterpillar	301.8
1.85 Tonne	Sany	SY18C
2.26 Tonne	Caterpillar	302
2.76 Tonne	Sany	SY26U
3 Tonne	Komatsu	PC30MR
3 Tonne	Hitachi	ZX33
3.85 Tonne	Sany	SY35U
5 Tonne	Komatsu	PC55MR
5 Tonne	Komatsu	PC45MR
5 Tonne	Komatsu	PC40MR
5.3 Tonne	Sany	SY50U
6.1 Tonne	Sany	SY60C
7.28 Tonne	Sany	SY75C
8 Tonne	Komatsu	PC78MR
8.5 Tonne	Komatsu	PC88MR
8.8 Tonne	Sany	SY80U
9 Tonne	Caterpillar	308CR
9.1 Tonne	Sany	SY95C
14 Tonne	Komatsu	PC138US
14 Tonne	Komatsu	PC160LC
14 Tonne	Hyundai	R140LC
15.1 Tonne	Sany	SY135C
16 Tonne	Sany	SY155U
16 Tonne	Hitachi	ZX160LC
22 Tonne Zero Swing	Komatsu	PC228US
22 Tonne	Caterpillar	320GC
22 Tonne	Caterpillar	320DL
22 Tonne	Hitachi	ZX210H
22 Tonne	Komatsu	PC200LC
22 Tonne	Komatsu	PC210LCi
22 Tonne	Komatsu	PC210LC
22 Tonne	Komatsu	HB215LC
22.6 Tonne	Sany	SY215C
23 Tonne	Komatsu	PC220LC
23 Tonne	Hitachi	ZX225USLC
30 Tonne	Volvo	EC290CLC
30 Tonne	Komatsu	PC270LC
31.5 Tonne	Sany	SY305H
33 Tonne	Hitachi	ZX330
33 Tonne	Hitachi	ZX350H
34 Tonne	Komatsu	PC300LC
35 Tonne	Hitachi	ZX350LC
36 Tonne	Komatsu	PC360LCi
36 Tonne	Komatsu	PC350LC
36.7 Tonne	Sany	SY365H

CATEGORY	MAKE	MODEL
37 Tonne	Caterpillar	336
45 Tonne	Komatsu	PC450LC
49.7 Tonne	XCMG	XE500LC
54.5 Tonne	Sany	SY500H
60 Tonne	Komatsu	PC600LC
76.2 Tonne	Sany	SY750H
78.6 Tonne	Sany	SY870H
80 Tonne	Komatsu	PC850-8E0SE
85 Tonne	Komatsu	PC800LC
121 Tonne	XCMG	XE1350
192 Tonne	XCMG	XE2000
285 Tonne	XCMG	XE3000
384 Tonne	XCMG	XE4000
570 Tonne	XCMG	XE5600
672 Tonne	XCMG	XE7000



Graders

CATEGORY	MAKE	MODEL	WEIGHT
12' Motor Grader	Komatsu	GD555	8 Tonne
12' Motor Grader	Caterpillar	120M	14.5 Tonne
12' Motor Grader	XCMG	GR2405T	17.5 Tonne
12' Motor Grader	XCMG	GR2605T	19 Tonne
14' Motor Grader	Caterpillar	140M	18.4 Tonne
14' Motor Grader	Caterpillar	140M AWD	18.4 Tonne
14' Motor Grader	Caterpillar	140H	18.4 Tonne
14' Motor Grader	Caterpillar	140G	18.4 Tonne
14' Motor Grader	Caterpillar	150 AWD	19.8 Tonne
14' Motor Grader	Komatsu	GD655	18.5 Tonne
14' Motor Grader	John Deere	770G	19.3 Tonne
14' Motor Grader	John Deere	672G	20 Tonne
14' Motor Grader	John Deere	772GP	20.5 Tonne
15' Motor Grader	XCMG	GR3005T	28.5 Tonne
16' Motor Grader	John Deere	872GP	21.6 Tonne
16' Motor Grader	Caterpillar	16MQLR	30 Tonne
16' Motor Grader	XCMG	GR3505T Pro	32 Tonne
24' Motor Grader	Caterpillar	24	73 Tonne
24' Motor Grader	XCMG	GR5505	74 Tonne



Front End Loaders

CATEGORY	MAKE	MODEL
1.5m³	Komatsu	WA150
2.1m³	XCMG	XC938
2.1m³	Caterpillar	930K
2.5m³	Komatsu	WA250
3.1m³	Komatsu	WA320
3.2m³ Electric	XCMG	XC968_EV
3.5m³	Komatsu	WA380
3.75m³ - 4m³	Komatsu	WA430
3.4m³	Caterpillar	950M
3.5m³	XCMG	XC958
3.6m³	Caterpillar	962M
4m³ - 5m³	Komatsu	WA470
4.5m³	XCMG	XC978
5m³	Komatsu	WA480
4m³ - 5m³	Volvo	L150G
4.7m³ - 6.4m³	Komatsu	WA500
5.6m³	Caterpillar	980M
5.6m³	Caterpillar	982M
5.6m³	Hitachi	ZW370
6.4m³	Caterpillar	988K
6.4m³	Komatsu	WA600
6.5m³	XCMG	LW1200KN
7m³	Volvo	L260H
13m³	Komatsu	WA900



Tool Carriers

CATEGORY	MAKE	MODEL
2.2m³ - 2.3m³	Komatsu	WA250PT
2.2m³ - 2.3m³	Komatsu	WA250PZ
1.9m³ - 2.7m³	Komatsu	WA270
2.5m³ - 2.7m³	Komatsu	WA320-8
2.5m³ - 2.7m³	Komatsu	WA320PZ-6
2.5m³ - 2.7m³	Volvo	L90F
3m³	Volvo	L110F
3.1m³	Hitachi	ZW180-5
3.5m³	Volvo	L120F
4.2m³	Volvo	L150F
4.4m³	Volvo	L180F
5.2m³	Volvo	L220H



Site Dumpers

CATEGORY	PAYLOAD	MAKE	MODEL
Side Tipper	9 Tonne	Wacker Neuson	DV90
Front Tipper	9 Tonne	Thwaites	9T Dumper



Skid Steer Loaders

CATEGORY	MAKE	MODEL	TIPPING LOAD (35%)
Tracked	Bobcat	T140SJC	635kg
Tracked	Caterpillar	239D	695kg
Tracked	Caterpillar	249D	790kg
Tracked	Caterpillar	259D	915 kg
Wheeled	Komatsu	SK714	650kg
Wheeled	Caterpillar	226B	680kg
Wheeled	XCMG	XC7-SR07	890kg
Wheeled	XCMG	XC7-SR08	955kg
Wheeled	Caterpillar	246C	975kg
Wheeled	XCMG	XC7-SR10	1100kg
Wheeled	XCMG	XC7-SR12	1260kg
Tracked	XCMG	XC-SR13	3880kg



Dozers

CATEGORY	MAKE	MODEL	BLADE WIDTH
17.3 Tonne	Caterpillar	D6N	4080mm
17.4 Tonne	XCMG	D170	3455mm
17.7 Tonne	Caterpillar	D6H	4486mm
21 Tonne	Caterpillar	D6T XL	3693mm
21 Tonne	Caterpillar	D6T LGP	3693mm
24.6 Tonne	XCMG	D260	3725mm
27 Tonne	Caterpillar	D7	3988mm
35.6 Tonne	XCMG	D360	4130mm
39.4 Tonne	Caterpillar	D8	5045mm
70 Tonne	Caterpillar	D10T	7416mm



Backhoes

DIG DEPTH	MAKE	MODEL	WEIGHT
4.32m	JCB	4CX	8.178 Tonne
4.8m	Komatsu	WB97R-5E0	7.6 Tonne
4.883m	Caterpillar	432E	9.1 Tonne
6.14m	JCB	5CX	10.6 Tonne



Articulated Dump Trucks

CATEGORY	PAYLOAD	MAKE	MODEL
Articulated	30 Tonne	XCMG	XDA30
Articulated	30 Tonne	Komatsu	HM300
Articulated	37 Tonne	Hitachi	AH400D
Articulated	40 Tonne	Komatsu	HM400
Articulated	41 Tonne	Caterpillar	745
Articulated	41 Tonne	XCMG	XDA45



Rollers

CATEGORY	WEIGHT	MAKE	MODEL
Smooth Drum	7 Tonne	Bomag	BW177DH
Smooth Drum	11 Tonne	Dynapac	CA252D
Smooth Drum	11 Tonne	Bomag	BW212D
Smooth Drum	12 Tonne	Hamm	3412 HT V10
Smooth Drum	12 Tonne	Caterpillar	CS64B
Smooth Drum	12 Tonne	Bomag	BW213D
Smooth Drum	12.5 Tonne	Caterpillar	CS56B
Smooth Drum	12.7 Tonne	Dynapac	CA302D
Smooth Drum	13.2 Tonne	Dynapac	CA362D
Smooth Drum	12.6 Tonne	Bomag	BW213D
Smooth Drum	14.3 Tonne	Caterpillar	CS68B
Smooth Drum	15.7 Tonne	Hamm	3516
Smooth Drum	16 Tonne	Caterpillar	CS74B
Smooth Drum	16 Tonne	Caterpillar	CP76B
Smooth Drum	16.1 Tonne	Bomag	BW216D
Smooth Drum	17.89 Tonne	Hamm	3518
Smooth Drum	18.7 Tonne	Caterpillar	CS78B
Smooth Drum	19.3 Tonne	Dynapac	CA6000D
Smooth Drum	19.8 Tonne	Hamm	3520
Smooth Drum	20 Tonne	Caterpillar	CS79B
Smooth Drum	26 Tonne	XCMG	XS263J
Padfoot	12 Tonne	Caterpillar	CS12 GC
Padfoot	12 Tonne	Caterpillar	CS56B
Padfoot	12 Tonne	Bomag	BW211D
Padfoot	12.6 Tonne	Bomag	BW213D
Padfoot	13.2 Tonne	Dynapac	CA362D
Padfoot	15.7 Tonne	Hamm	3516P
Padfoot	16.1 Tonne	Bomag	BW216PD
Padfoot	17.6 Tonne	Caterpillar	CP76B
Padfoot	17.89 Tonne	Hamm	3518P
Padfoot	18 Tonne	Dynapac	CA6000PD
Padfoot	18.6 Tonne	Dynapac	CA602PD
Padfoot	19.4 Tonne	Bomag	BW219PD
Padfoot	19.8 Tonne	Hamm	3520P
Padfoot	26 Tonne	XCMG	XS263
Multi Tyre	18 Tonne	Hamm	HP280
Multi Tyre	18 Tonne	Caterpillar	CW34
Multi Tyre	18.3 Tonne	Hamm	GRW280
Multi Tyre	20 Tonne	Caterpillar	CW34
Multi Tyre	20 Tonne	Ammann	AP240
Multi Tyre	20 Tonne	Bomag	BW24RH
Multi Tyre	20 Tonne	Bomag	BW25RH
Multi Tyre	24 Tonne	Caterpillar	CW34LRC
Double Drum	765 Kg	Husqvarna	LP 6505
Double Drum	1 Tonne	Husqvarna	LP 7505
Double Drum	2.5 Tonne	Caterpillar	CB2.7
Double Drum	2.6 Tonne	Hamm	HDI2VV
Double Drum	2.8 Tonne	Bomag	BW120AD
3 Pin Static	14 Tonne	Aveling Barford	DC014

CATEGORY	WEIGHT	MAKE	MODEL
Trench Roller	1,340 Kg	Ammann	1575
Trench Roller	1,495 Kg	Wacker Neuson	RTX-SC3
Trench Roller	1,595 Kg	Dynapac	D.ONE 850
Trench Roller	1,675 Kg	Husqvarna	LP9505



Compactors & Tampers

CATEGORY	WEIGHT	MAKE	MODEL
Tampers	98kg	Husqvarna	LT800
Plate Compactors	185kg	Husqvarna	LG164
Plate Compactors	244kg	Husqvarna	LG204
Plate Compactors	302kg	Husqvarna	LG300
Plate Compactors	436kg	Husqvarna	LG400
Plate Compactors	500kg	Bomag	BPR 70/70D
Plate Compactors	500kg	Dynapac	LG500
Plate Compactors	750kg	Bomag	BPR 100/80
Plate Compactors	750kg	Dynapac	LH700
Plate Compactors	800kg	Husqvarna	LH804



Compressors

TYPE	AIR FLOW	DRY WEIGHT	PRESSURE
Trailer	127 cfm	700 kg	7 bar
Trailer	176.5 cfm	800 kg	7 bar
Skid	185 cfm	950 kg	7 bar
Trailer	251 cfm	1400 kg	7 bar
Skid	400 cfm	1920 kg	10 bar
Trailer	423 cfm	2000 kg	7 bar
Trailer	530 cfm	2600 kg	10 bar
Trailer	893 cfm	3700 kg	8 bar
Trailer	938 cfm	5300 kg	12 bar
Trailer	1020 cfm	5300 kg	10.3 bar
Trailer	1102 cfm	5300 kg	8.6 bar



Water Trucks

CATEGORY	CAPACITY	MAKE	MODEL
Rigid	14,000 L	Isuzu	FVZ 260-300
Rigid	14,000 L	Hino	500
Rigid	15,000 L	Isuzu	FVZ 260-300
Rigid	15,000 L	Hino	500
Rigid	15,000 L	Mercedes Benz	Axor
Rigid	20,000 L	Isuzu	FYH 2000 8x4
Rigid	20,000 L	Iveco	Trakker AD450 6x6
Articulated	16,000 L	JCB	Fastrac 185/65
Articulated	16,000 L	Chamberlain	C6100
Articulated	16,000 L	Mercedes Benz	MB Trac
Articulated	26,000 L	Komatsu	HM300
Articulated	35,000 L	Komatsu	HM400



Service, Fuel & Tipper Trucks

CATEGORY	CAPACITY	MAKE	MODEL
Service Truck	8 Compartments	Isuzu	FVZ 260 - 300
Service Truck	8 Compartments	Hino	500
Fuel Trailer	1,400 L	-	-
Fuel Trailer	2,000 L	-	-
Fuel Truck	14,000 L	Hino	500
Tipper Truck	11m³	Isuzu	FVZ 260-300
Tipper Truck	11m³	Hino	500
Tipper Truck	11m³	Isuzu	FVZ 1400
Side Tipper	21m³	Howard Porter	-
Side Tipper	24m³	Road West	-



Telehandlers

LIFTING WEIGHT	MAKE	MODEL	LIFTING HEIGHT
3 Tonne	JCB	531-70	7000mm
3.2 Tonne	Manitou	MT732	6900mm
3.5 Tonne	JCB	535-95	9500mm
4 Tonne	JCB	541-70	7000mm
4 Tonne	Merlo	TF42.7-100	9500mm
4 Tonne	Manitou	MT-X 1440	13530mm
4 Tonne	Manitou	MT-X 1840	17550mm
6 Tonne	Merlo	P60.10EE	9550mm



Forklifts

LIFTING HEIGHT	MAKE	MODEL	LOAD CAPACITY
3000 mm	Hyster	H4.0FT	4 Tonne
4000 mm	Hyster	H5.0FT	5 Tonne
5336 mm	Hyster	H8.00XM	8 Tonne
6200 mm	Hyster	H16.00XM	16 Tonne
4,000 mm	XCMG	XCF1612KII	16 Tonne



Cranes

MAKE	MODEL	WEIGHT	MAXIMUM BOOM LENGTH
Franna	AT22	22 tonnes	17.9m
Franna	MAC 25	25 tonnes	18.4m



Articulated Boom Lifts

HEIGHT	MAKE	MODEL	CATEGORY
34 ft	JLG	H340AJ	Hybrid
34 ft	Genie	Z34 / 22 N	Electric
45 ft	JLG	450AJ	Diesel
45 ft	Genie	Z-45 XC	Rough Terrain
51 ft	Genie	Z-51 / 30J RT	Rough Terrain
62 ft	Genie	Z-62 / 40	Rough Terrain
80 ft	JLG	H800AJ	Hybrid
80 ft	JLG	800 AJ	Diesel
80 ft	Haulotte	HA26 RTJ PRO	Diesel
80 ft	Genie	Z-80 / 60	Rough Terrain
87.3ft	XCMG	XGA26K	Rough Terrain
125 ft	JLG	1250AJP	Diesel
135 ft	Genie	ZX-135 / 70	Rough Terrain



Scissor Lifts

HEIGHT	MAKE	MODEL	CATEGORY
19 ft	JLG	ES1932	Electric
19 ft	JLG	R1932	Electric
26 ft	JLG	R2632	Electric
26 ft	Genie	GS-2632	Electric
26 ft	Genie	GS2669 RT	Rough Terrain
32 ft	JLG	ES 3246	Electric
32 ft	JLG	R 3246	Electric
33 ft	Genie	GS 3369 RT	Rough Terrain
33 ft	Genie	GS 3384	Rough Terrain
33 ft	Snorkel	S3370 RT	Rough Terrain
40 ft	JLG	R 4045	Electric
40 ft	Genie	GS-4069 RT	Rough Terrain
40 ft	XCMG	XG1218RT	Rough Terrain
43 ft	Genie	GS-4390	Rough Terrain
46 ft	Genie	GS-4655	Electric
47 ft	JLG	ERT 4769	Rough Terrain
50 ft	XCMG	XG1523RT	Rough Terrain
53 ft	Genie	GS-5390	Rough Terrain
60 ft	XCMG	XG1823RT	Rough Terrain



Telescopic Boom Lifts

HEIGHT	MAKE	MODEL	CATEGORY
45 ft	Genie	S-45 XC	Rough Terrain
65 ft	Genie	S65 XC	Rough Terrain
72.2 ft	XCMG	XGS22K	Rough Terrain
80 ft	Genie	S-80 XC	Rough Terrain
85 ft	Genie	S-85XC	Rough Terrain
125 ft	Genie	SX-125 XC	Rough Terrain
135 ft	Genie	SX-135 XC	Rough Terrain
150 ft	Genie	SX-150	Rough Terrain



Generators (Diesel and Hybrid)

POWER	OUTPUT	VOLTAGE	WEIGHT
5 kVA	5.5 kW	230V	95 kg
6 kVA	5.2 kW	240V	239 kg
10 kVA	8 kW	240V	391 kg
15 kVA	12.5 kW	240/415V	516 kg
20 kVA	16 kW	240/415V	703 kg
25 kVA	20 kW	240/415V	591 kg
30 kVA	24 kW	240/415V	950 kg
35 kVA	32 kW	240/415V	890 kg
40 kVA	35 kW	240/415V	900 kg
45 kVA	36 kW	240/415V	1085 kg
60 kVA	48 kW	240/415V	1110 kg
80 kVA	64 kW	240/415V	1403 kg
100 kVA	80 kW	240/415V	1685 kg
150 kVA	120 kW	240/415V	2000 kg
200 kVA	160 kW	240/415V	2440 kg
220 kVA	178 kW	240/415V	3670 kg
250 kVA	200 kW	240/415V	24500 kg
300 kVA	240 kW	240/415V	3068 kg
350 kVA	280 kW	240/415V	4439 kg
400 kVA	320 kW	240/415V	4400 kg
450 kVA	360 kW	240/415V	4597 kg
500 kVA	400 kW	240/415V	4800 kg
600 kVA	480 kW	240/415V	5970 kg
670 kVA	536 kW	240/415V	5970 kg
750 kVA	600 kW	240/415V	9200 kg
800 kVA	640 kW	240/415V	10000 kg
910 kVA	728 kW	240/415V	11600 kg
1035 kVA	828 kW	240/415V	11680 kg
1253 kVA	1002 kW	240/415V	14100 kg
1505 kVA	1204 kW	240/415V	14050 kg
1705 kVA	1364 kW	240/415V	15500 kg
2000 kVA	1600 kW	240/415V	16000 kg

*All Generators under 100 kVA are available on trailers.



Diesel Pumps Highhead

INLET SIZE	OUTLET SIZE	Q MAX	MAX HEAD
100 mm	75 mm	40 L/sec	200 m
100 mm	80 mm	42 L/sec	92 m
150 mm	75 mm	50 L/sec	150 m
150mm	100 mm	80 L/sec	180 m
150 mm	100 mm	117 L/sec	101 m
200 mm	150 mm	167 L/sec	101 m
250 mm	200 mm	250 L/sec	70 m
250 mm	200 mm	408 L/sec	109 m



Diesel Pumps Surface Dewatering

SIZE	Q MAX	MAX HEAD
80 mm	45 L/sec	19 m open and silent option
100 mm	69 L/sec	36 m open and silent option
100 mm	77 L/sec	50 m open and silent option
150 mm	150 L/sec	37 m open and silent option
150 mm	141 L/sec	51 m open and silent option
All Pumps under 150 mm size are available on trailers		
200 mm	175 L/sec	30 m open and silent option
200 mm	236 L/sec	50 m open and silent option
300 mm	313 L/sec	29.5 m open and silent option
300 mm	600 L/sec	71 m open and silent option



Submersible Pumps

TYPE	POWER	SIZE	Q MAX	MAX HEAD
Dewatering	1 kW	50 mm	10 L/sec	16 m
Dewatering	2 kW	75 mm	14 L/sec	24 m
Dewatering	3.4 kW	75 mm	23 L/sec	23 m
Dewatering	6.6 kW	75 mm	20 L/sec	38 m
Dewatering	8.8 kW	75 mm	28 L/sec	40 m
Dewatering	6.6 kW	100 mm	37 L/sec	25 m
Dewatering	8.8 kW	100 mm	45 L/sec	30 m
Dewatering	14 kW	100 mm	20 L/sec	65 m
Dewatering	22 kW	100 mm	40 L/sec	65 m
Dewatering	30 kW	100 mm	40 L/sec	86 m
Dewatering	22 kW	150 mm	95 L/sec	40 m
Sludge	3.7 kW	75 mm	20 L/sec	13 m
Sludge	9 kW	100 mm	28 L/sec	23 m
Sludge	11 kW	100 mm	42 L/sec	24 m
Sludge	15 kW	100 mm	22 L/sec	27 m
Sludge	37 kW	100 mm	80 L/sec	50 m
Sludge	45 kW	150 mm	124 L/sec	30 m
Sludge	75 kW	150 mm	155 L/sec	48 m
Slurry	3.1 kW	75 mm	15 L/sec	15 m
Slurry	5.7 kW	100 mm	25 L/sec	23 m
Slurry	8 kW	100 mm	28 L/sec	25 m



Battery Packs

FEATURES	METRICS
Nominated rated power	36 / 45 kW / kVA
Nominal Energy Storage Capacity	46 kWh
Rated Voltage (VAC)	400 / 230
Battery system voltage (VDC)	48
Nominal Rated Current (A)	65



Compressors

TYPE	AIR FLOW	DRY WEIGHT	PRESSURE
Trailer	127 cfm	700 kg	7 bar
Trailer	176.5 cfm	800 kg	7 bar
Skid	185 cfm	950 kg	7 bar
Trailer	251 cfm	1400	7 bar
Skid	400 cfm	1920 kg	10 bar
Trailer	423 cfm	2000 kg	7 bar
Trailer	530 cfm	2600 kg	10 bar
Trailer	893 cfm	3700 kg	8 bar
Trailer	938 cfm	5300 kg	12 bar
Trailer	1020 cfm	5300 kg	10.3 bar
Trailer	1102 cfm	5300 kg	8.6 bar
Electric Mobile	1286 cfm	2750 kg	5-14 bar



Pump Accessories

Materials and Parts can be supplied at cost price + 20%

DN150 Standpipe	clearance 4.2m
DN150 Standpipe	clearance 4.8m
DN150 Standpipe	clearance 5.2m
DN150 Standpipe	clearance 5.8m
DN150 Standpipe	clearance 6.5m
DN150 Standpipe	clearance 8.6m
DN200 Standpipe	clearance 4.2m
DN200 Standpipe	clearance 4.8m
DN200 Standpipe	clearance 5.2m
DN200 Standpipe	clearance 5.8m
DN200 Standpipe	clearance 6.5m
DN200 Standpipe	clearance 8.6m
Hose & Cable Floats	
HDPE pipe	
Pontoons	
Flow Meters	
Suction Hose	
Discharge Hose	
Remote Monitoring	



Portable Buildings

TYPE	SPECIFICATIONS
Dome Shelters	custom-made
Portable site offices	6.09 m & 12.19 m options, fully furnished
Portable Lunchroom	6.09 m & 12.19 m options, fully furnished
Ablution Block	6.09 m x 2.43 m, 4 cubicles
Sea Containers	6.0 m x 2.5 m & 12.0 m x 2.5 m
Portable Toilets	1160 mm x 1160 mm x 230 mm
Portable Showers	1150 mm x 1150 mm x 230 mm



Lighting Towers Diesel & Solar

LAMP POWER	ILLUMINATED AREA	RUNNING TIME
1800 W	5000 / 500 m ²	100 hours
4 x 320 W	4500 / 4200 m ²	143 hours
4 x 320 W	5000 m ²	218 hours
4 x 350 W	5000 m ² @ 20 Lux	220 hours
4 x 350 W	5.4 lm / m ² @ 28.328 m ²	150 hours
6 x 350 W	315,000	145 hours
6 solar x 100 W	65,000	56 hours
2 solar x 100 W	14,000	35 hours



Power Accessories

TYPE	SIZE	OUTLET
Distribution Board	32 amp	8 x 240V 15A 1 x 415V 20A 1 x 415V 32A
Distribution Board	32 amp	8 x 240V 15A 1 x 415V 20A 1 x 415V 32A
Distribution Board	63 amp	10 x 240V 15A 2 x 415V 20A 2 x 415V 32A
Distribution Board	125 amp	8 x 240V 15A 2 x 415V 32A
Power Cables	20 amp	cable length can be customised
Power Cables	32 amp	cable length can be customised
Power Cables	63 amp	cable length can be customised
Power Cables	100 amp	cable length can be customised
Power Cables	Hardwire	cable length can be customised
Load Banks	100 - 500 kW	in all application

Control Panels, Soft Starters & Variable Speed Drivers are available.



Mobile Fuel Supply

TYPE	SIZE	COMMENTS
Fuel Tank	1000 L	Double bunded, multiple fuel connections
Trailer Mounted Fuel Tank	1000 L	Double bunded, multiple fuel connections
Fuel Tank	2000 L	Double bunded, multiple fuel connections
Fuel Tank	4000 L	Double bunded, multiple fuel connections
Fuel Tank	10000 L	Double bunded, multiple fuel connections
Trailer Mounted Fuel Tank	2000 L	Double bunded, multiple fuel connections

Plant Trailers, Tandem Trailers, Cage Trailers, Pressure Washer Trailers and Fire Fighter Trailer are also available for hire.



Solar Skid

FEATURES	METRICS
Power	1.78 kWp
Voltage (Voc)	196.8 v
Current (Isc)	11.45 A
Dimensions	4455 mm x 2240 mm x 300 mm
Weight	750 kg



Traffic Lights & Signage

CATEGORY	POWER SUPPLY
Traffic Lights	Nominal 12 Volts. Range 10.8 - 14.2V
Variable Message Signs	Nominal 12 Volts. Range 10.8 - 14.2V



Solar CCTV

MAKE	CAMERA
Solareye	2x4MP acusense deep learning cameras, 50m night vision



Solar Hydration Station

FEATURES
Compatible with all 1000L single use water packs
Optional 1500L fixed water storage tank
Insulated enclosure to minimise direct sunlight exposure of water pack
Easy access for forklift load/unload
Flexible inlet hose with quick release connection



Dust Suppression Fans

MAKE	MODEL	ELECTRICAL ENGINE POWER
Generac	DF 4500	4kW
Generac	DF 7500	7.5kW
Generac	DF 15000	15kW
Generac	DF 20000	20kW
Generac	DF 50000	45kW
Generac	DF 110000	100kW



Commercial Vehicles

SEATS	CATEGORY	MODEL
12 & 22	Mine Spec Buses	Toyota HiAce/Coaster & VW Crafter
7	Mine Spec 4x4 Wagon	Toyota Land Cruiser & Prado
2 & 5	Mine Spec 4x4 SC & DC	Toyota Hilux & WorkMate
5	Mine Spec 4x4 DC Steel Tray	Mitsubishi Triton & Isuzu D-Max



Portable Steel Barrier

FEATURES	METRICS
Weight (12 m)	1155 kg
Weight (6 m)	562 kg (male) & 555 (female)
Lifting Capacity (6 m)	6.09 m & 12.19 m options, fully furnished
Lifting Capacity (6 m)	4.1 times the weight of 6 m Section.
Lifting Capacity (12 m)	2.0 times the weight of 12 m Section.



Bulk Water Storage

BRAND	SIZE	COMMENTS
Break Tanks	2 - 60 KL	Fitted with stair & gantry system
Water Storage	2 - 56 KL	Can be modified to suit any application



Machine Attachments

CATEGORY	ATTACHMENT	CATEGORY	ATTACHMENT
Excavator	GP Bucket	Tool Handler	GP Bucket
Excavator	Batter Bucket	Tool Handler	Rake Bucket
Excavator	Trenching Bucket	Tool Handler	Stemming Bucket
Excavator	Skeleton Bucket	Tool Handler	Grain Bucket
Excavator	Sieve Bucket	Tool Handler	Forks
Excavator	Screening Bucket	Tool Handler	Jib
Excavator	Trapezoidal Bucket	Tool Handler	Log Forks
Excavator	Tilting Bucket	Tool Handler	Man Cage
Excavator	Rock Breaker	Tool Handler	Tyre Grab
Excavator	Auger	Tool Handler	GPS
Excavator	Misu Heavy Duty Screen		
Excavator	GP Grapple	Backhoe	GP Bucket
Excavator	360° Grapple	Backhoe	Trenching Bucket
Excavator	Rock Grapple	Backhoe	Batter Bucket
Excavator	Hydraulic Grapple	Backhoe	Batter Bucket (Digger)
Excavator	Mechanical Grab	Backhoe	Auger
Excavator	Hydraulic Grab	Backhoe	Forks
Excavator	Sleeper Grab	Backhoe	GPS
Excavator	Plate Compactor		
Excavator	Compaction Wheel	Telehandler	GP Bucket
Excavator	Tree & Stump Mulcher	Telehandler	Batter Bucket
Excavator	Ripper	Telehandler	Forks
Excavator	GPS	Telehandler	Jib
		Telehandler	GP
Skid Steer	GP Bucket		
Skid Steer	Rake Bucket	Grader	Roller
Skid Steer	Forks	Grader	GPS
Skid Steer	Bucket Broom		
Skid Steer	Auger	Tractor	Grid Roller
Skid Steer	Trencher	Tractor	Hydraulic Angle Broom
Skid Steer	Levelling Attachment		
Skid Steer	GPS		



LOADER / DOZER / GRADER TYRES



CRANE TYRES



ARTICULATED DUMP TRUCK TYRES



RIGID DUMP TRUCK TYRES



UNDERGROUND TYRES



ROAD TRAIN TYRES



1300 BROOKS (276 657)
 sales@brooksequipment.com.au
 www.brooksequipment.com.au

BUY NOW WITH FINANCE

3.99%

INTEREST PA ON
SELECT XCMG MODELS



Brooks Equipment is your official XCMG Dealership

IN WESTERN AUSTRALIA, SOUTH AUSTRALIA, NORTHERN TERRITORY, AND THE MAJORITY OF QUEENSLAND.



XC938 WHEEL LOADER

Weight 11t
Engine Cummins QSB6.7
Power 99kW@2200rpm
Bucket 2.1m³



XC948 WHEEL LOADER

Weight 16.5t
Engine Cummins QSB6.7
Power 142kW@2200rpm
Bucket 2.1m³



XE155 EXCAVATOR

Weight 16.6t
Engine Cummins QSF3.8
Power 93kW@2200rpm
Bucket 0.65m³



GR2405 MOTOR GRADER

Weight 17.5t
Engine Cummins QSB6.7
Power 178kW@2200rpm
Blade 3660 x 610 mm



XGA16K ARTIC. BOOM

Weight 7.6t
Engine Kubota
Power 36kW@2600rpm
Height 16.63m



XCMG Finance

TERMS & CONDITIONS - Information is valid as at 7th January 2025 and subject to change. 3.99% p.a. interest rate is only available to commercial customers approved by Pepper Asset Finance Pty Limited for a period of up to 36 months fixed interest rate loan term with a minimum 10% deposit and no final balloon payment. Offer available for the following 2024 models in stock XC938, XC948, XE155, GR2405 and XGA16K. Loan must be approved by 31st March 2025 and settled by 7th April. While stocks last. Not available in conjunction with any other offer. Offers and promotions may be continued, withdrawn or changed at anytime without notice. Extended delivery times may apply. Credit is provided by Pepper Asset Finance Pty Ltd ABN 56 165 183 317 Australian Credit License 458899. Applications for credit are subject to loan assessment and eligibility criteria and lending limits. Terms, conditions, fees and charges apply.



BROOKS

EQUIPMENT

1300 BROOKS (276 657)
sales@brooksequipment.com.au
www.brooksequipment.com.au