

STRONG G45PS

50Hz@1500RPM 400/230V 3PH - BROOKS MINING SPEC

GENMAC
POWER PRODUCTS

Perkins STAMFORD



Picture for illustration purposes only

General features

Silent generator with following specifications:

Frame:

- Heavy duty fabricated welded base plate with high quality steel UNI S235 JR
- Heavy duty, bell type, rubber anti-vibration mountings
- Fuel tank with drain plug and retention basin
- Feet and four lifting holes on the base
- Oil draining mechanical pump

Canopy:

- Four large doors for easy access for service and maintenance
- Electro-galvanized sheet DC01+ZE25/25 (EN 10152: 2009)
- High precision sheet cutting with nitrogen laser technology to avoid oxidation
- Sandblasting and cataphoresis treatment of intake / exhaust grids
- Weatherproof sealed joints
- Lockable handles in each door
- Centra
- Grey RAL 7035 "orange peel" specific powder coat paint for outdoor usage
- Rain cap on exhaust outlet
- Coolant refilling specific hatch
- Fuel filler outside enclosure
- Ecological Sound foam: 100% Recyclable, 35mm thickness, fire-proof self-extinguishing class1 fire-reaction compliant washable, mechanically fixed to the frame

Muffler:

- Residential type
- Integrated in the canopy
- With aluminum coating

Control Panel:

- Metal Control panel with protective back cover
- Dedicated area to make easier the electrical connection to the load

All units and components are prototype tested, factory build and production tested. A specific control procedure during the several stages of production ensures long life and reliability.

Overall performance

G45PS

PRP Continuous power kVA	45
PRP Continuous power kW	36
LTP Stand-by power kVA	50
LTP stand-by power kW	40
Power factor cos φ	0.8
Voltage VAC	400/230
Frecuency Hz	50
Ampere PRP/LTP	65 / 72
Speed RPM	1500

Dimensions and noise level

Length mm	2213
Width mm	960
Height mm	1258
Net Weight kg	1247
Gross Weight kg	-
Sound pressure at 7 mt dBA	-

Data reference

Standard reference conditions temperature 25°C, altitude 1-1000m asl, relative humidity 30%, atmospheric pressure 100 kPa (1 bar), power factor 0.8 lag, balanced load - non distortional. Fuel consumption is nominal and refers to specific weight 0.850 gr/lit. Power performance data as quoted can be obtained after the initial running-in period of the engine, during which one has to follow the instructions of the engine manufacturer as stated in the use and maintenance manual of the specific engine. The tolerance shown by the engine manufacturer is +/- 5%. Sound power values refer to free field conditions: the installation site may influence the values. Dimensions, weights and other specifications contained in the technical data sheet and related attachments are nominal, subject to tolerances and refer to the model with standard equipment; any optional and additional equipment/accessories can modify weight, dimensions, performance.P.R.P. Prime Power-Continuous power at variable load: The power that a genset can supply in continuous service at a variable load for an unlimited number of hours per year while respecting the maintenance intervals established in the environmental conditions stated by the Manufacturer. according to ISO8528-1. The average power supplied over time and any applicable overload must be less than the percentages stated by the Manufacturer.L.T.P. Limited-time running power-Limited power: The maximum power that a genset can supply for a limited time respecting the maintenance intervals established in the environmental conditions stated by the Manufacturer according to ISO 8528-1.The number of hours per year is stated by the Manufacturer. Overload is not permitted.*For reasons of transport and/or storage, liquids (oil and antifreeze) and batteries might not be included in the delivery.



☎ 1300 BROOKS (276 657)

@ service@brooksequipment.com.au

🌐 www.brooksequipment.com.au

BROOKS
EQUIPMENT

STRONG G45PS

50Hz@1500RPM 400/230V 3PH - BROOKS MINING SPEC

GENMAG
POWER PRODUCTS

Engine general data

Engine brand	Perkins
Model	1103A-33TG1
PRP Power kW	41.30
LTP Power kW	45.60
Fuel	Diesel
Nr. cylinders	3
Air intake	Turbocharged
Cooling	Water
Cubic capacity l.	3.30
Speed regulation	Mechanical
Performance Class - steady state regulator accuracy +/- %	G2 - 0.75
Load Step G1 - KWe	-
Load Step G2 - KWe	-
Load Step G3 - KWe	-
Voltage VDC	12
Emissions	-

Fuel consumption

Consumption 25% l./h	3.40
Consumption 50% l./h	5.70
Consumption 75% l./h	8.20
Consumption 100% l./h	10.70
Autonomy at 75% of load h.	≈ 12 h

Engine liquids and equipment

Type of lubricant	Oil SAE 15W40
Lubrication capacity l.*	8.30
Type of coolant	Antifreeze liquid
Coolant capacity l.*	10.20
Air intake filter	Paper cartridge
Battery capacity Ah	70
Number of batteries*	1

Alternator general data

Alternator brand	Stamford
Model	S1L2-N1
Type of excitation	Self-excited
Type of regulation	AVR
Regulator precision +/-%	1.00

Structure data

Type of structure	STRONG
Tank capacity l.	100
Retention basin	yes
Exhaust diameter mm	50

Fuel system and energy balance

AC pump suction head kPa	2
Combustion air flow volume LTP m3/min	3.10
Cooling air capacity LTP m3/min	53.00
Exhaust gas flow-density LTP m3/min	7.70
Exhaust gas temperature LTP °C	537.00
Brake mean effective pressure kPa	10.00
Energy to exhaust LTP kWt	35.00
Energy to coolant LTP kWt	30.00
Energy to radiation LTP kWt	8.00

Control panel features

QT1R-4510

Self-standing tower with IP65 metal box
Circuit breaker
Socket kit
Manual controller DSE4510

- Voltmeter, Frequency meter, Ammeter
- Generator power (kW, kV Ar, kV A & pf) monitoring
- Hour meter
- Fuel level meter
- Overload (kW & kV Ar) protection
- Low oil pressure protection
- High coolant temperature protection
- Low fuel level protection
- Battery charger alternator fault
- Rpm protection
- Emergency stop button
- Audible alarm
- Terminal board for ATS connection
- Can Bus reading Port (if standard on the engine)
- Battery charger
- On/off switch



Dealer



☎ 1300 BROOKS (276 657)

@ service@brooksequipment.com.au

🌐 www.brooksequipment.com.au

BROOKS
EQUIPMENT

STRONG G45PS

50Hz@1500RPM 400/230V 3PH - BROOKS MINING SPEC

GENMAC
POWER PRODUCTS

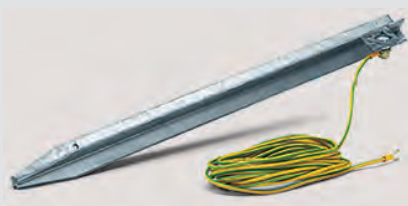
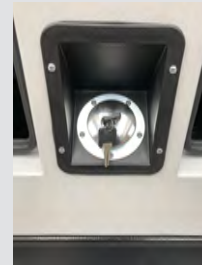
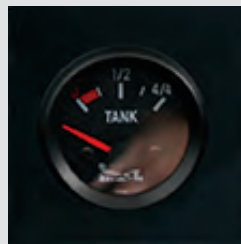
Standard Composition:

Control Panel:

Frontal Socket kit: 3 x 15amp AUS/NZ, No. 2 CEE 32A 415V Analogic fuel level gauge
Self-standing internal tower panel IP65 inside canopy
Deep sea controller DSE4510 and electronic battery charger
Terminal board for easy direct connection
Adjustable Earth Fault Breaker (RCD)

Structure:

100L integrated Bunded tank + containment up to 110% of total liquids Fuel tank cap with lock
Central lifting hook
Bilateral forklift pockets (to be dismantled in case you add skid base)
Galvanized steel canopy with powder coated paint
Exhaust manifold insulation jacket
Lockable battery switch
3 way valve
Quick coupling (1/4") for external tank
Quick coupling for oil discharge
Ground rod
Doors earthing



1300 BROOKS (276 657)

@ service@brooksequipment.com.au

www.brooksequipment.com.au

BROOKS
EQUIPMENT

STRONG G45PS

50Hz@1500RPM 400/230V 3PH - BROOKS MINING SPEC



Structure Details:



100% recyclable, Class 1, fireproof foam, mechanically fixed - no glue.



Automotive gaskets seal doors



Bunded tank 110%



Coolant Drain tap



Modular canopy



Drain plug



Rain cap



External Emergency Stop Button

Optional:

- Electronic Governor
- Cyclon Air Prefilter
- Skid base



☎ 1300 BROOKS (276 657)
@ service@brooksequipment.com.au
🌐 www.brooksequipment.com.au

BROOKS
EQUIPMENT